

# **FACT BOOK 2014**

**WEST CHESTER UNIVERSITY OF PENNSYLVANIA**

## **West Chester University of Pennsylvania Office of Institutional Research**

**887 South Matlack Street  
West Chester, PA 19383  
Telephone (610) 436-2835**

**Fax (610) 436-2635**

---

### **Introduction & Acknowledgements**

This Fact Book provides some of the most commonly requested information about West Chester University. Much of the information is drawn from the University's database and state mandated reports. Other offices and sources used are cited throughout the document. The cooperation of those offices and sources is much appreciated.

The Fact Book is divided into several chapters: Admissions, Enrollment, Retention/Graduation Rates, Academic Degree Programs & Accredited Programs, Graduation/Degree Information, and Resources (including financial aid), Services and Facilities.

Comments and suggestions about additional information that might be included are much appreciated. Please forward your suggestions to [ninamdar@wcupa.edu](mailto:ninamdar@wcupa.edu).

Additional institutional information is available on our website: <http://www.wcupa.edu/infoservices/oir/>

# Table of Contents

<b>Table of Contents</b>	2-3
<b>WCU Quick Facts</b>	4
<b>GENERAL INFORMATION</b>	
About the University and Its Mission	6-8
West Chester University Organizational Chart	9
<b>ADMISSIONS</b>	
Undergraduate Admissions Standards	11
Admission Application Statistics	12-13
First Time Full-Time First Year by Admission Type	14
SAT Score Distribution: Fall 2014	15-16
SAT Average Scores	16
Feeder High Schools: Fall 2014	17
Feeder Colleges: Fall 2014	18
First Time First Year Enrollment by County	19
First Time First Year Enrollment by State	20
First-Time First Year Admission Yield Statistics	21
First-Time First Year Admission Yield Chart	22
First-Time Transfer Admission Yield Statistics	23
First-Time Transfer Admission Yield Chart	24
<b>ENROLLMENT</b>	
Head Count Enrollment by Race/Ethnicity and Gender	26
Head Count Enrollment by Degree Status and College Fall 2014	27
Head Count Enrollment by State: Fall 2011 to 2014	28-29

To be continued.....

## Table of Contents (continued)

### ENROLLMENT (continued)

Enrollment by Pennsylvania County of Residence: Fall 2014	30
Head Count Enrollment by Ethnicity and Gender Fall 2010 to Fall 2014	31
Head Count Enrollment by College : Fall 2010 to Fall 2014	32-33
Head Count Enrollment by Student Level: Fall 2009 to 2014	34-35
Credit Hours and Student FTE Enrollment	36-37

### RETENTION AND GRADUATION

Retention & Graduation Rates for First-Time, Full-Time First Year: University Summary	39
Second-Year Retention Rates for First-Time, Full-Time First Year by Race/Ethnicity and by Gender	40
Four and Six-Year Graduation Rates by Race/Ethnicity	41
Four and Six-Year Graduation Rates by Gender	42

### ACADEMIC AND DEGREE PROGRAMS

Undergraduate Degrees and Majors	44-45
Graduate Degrees and Majors	46-47
Professional and Program Accreditations	48-49

### DEGREES CONFERRED

Undergraduate and Graduate Degrees Conferred by College and Academic Plan	51-71
---	-------

### RESOURCES, SERVICES & FACILITIES

Tuition and Fees	73
Library Resources	75

## Quick Facts

**West Chester University**  
**West Chester, PA 19383**  
**Telephone (610) 436-1000**  
**<http://www.wcupa.edu/>**

<b>Founded</b>	1871
<b>President</b>	Dr. Greg R. Weisenstein
<b>University Accreditation</b>	Middle States Commission on Higher Education
<b>Fall 2014 Enrollment</b>	16,091
<b>Undergraduate</b>	13,849
<b>Graduate</b>	2,242
<b>Fall 2014 Credit Hours</b>	210,561.0
<b>Undergraduate</b>	195,378.0
<b>Graduate</b>	15,183.0
<b>Undergraduate Degree Programs</b>	118
<b>Undergraduate Certificates</b>	6
<b>Undergraduate Non-Degree, Teacher Certification</b>	43
<b>Graduate Degree Programs</b>	92
<b>Master's Programs</b>	91
<b>Doctorate Program</b>	1
<b>Graduate Certificates</b>	36
<b>Graduate Non-Degree, Teaching Certification, Professional Growth, Letter of Completion</b>	79
<b>Degrees Awarded in 2013-2014</b>	3,973
<b>Bachelor's</b>	3,232
<b>Master's</b>	741



## **General Information**

# About the University and Its Mission

## **The West Chester University Mission Statement**

West Chester University, a member of the Pennsylvania State System of Higher Education, is a public, regional, comprehensive institution committed to providing access and offering high-quality undergraduate education, select post-baccalaureate and graduate programs, and a variety

## **The West Chester University Values Statement**

West Chester University is committed to attracting, enrolling, and graduating quality students from a wide variety of educational, cultural, and economic backgrounds. This endeavor requires the University to attract and retain highly qualified faculty and staff and to provide each member of the University community with learning and leadership development opportunities. To this end, the University supports and encourages programs which benefit all people and which seek to eradicate discrimination and injustice. We treasure what we believe to be the highest principles of American society: the worth and uniqueness of each individual, the belief that success is to be earned by individual effort put forth in an environment founded on equality of opportunity, and the appreciation of the ideal of an inclusive society.

We believe that it is incumbent upon all members of our community—staff, students, faculty and administrators—to conduct themselves with civility toward one another at all times. We value the special talents and contributions of each member of our community. We further affirm the worth and dignity of each member and the shared responsibility of all to treat each other as individuals, with respect and courtesy.

As a university owned by the citizens of Pennsylvania, we value our mission to provide the best educational opportunities possible which will enable the University community to successfully address the concerns of a global society. To this end, West Chester University seeks to provide diligent advising for students and to focus on teaching students to think clearly and critically, to make logical and ethical judgments, and to communicate effectively with others.

West Chester University's community strongly supports the principles of academic integrity and academic responsibility, viewing both as the province of every member of the campus community. We hold the highest esteem for teaching directed toward student learning and affirm that mastery of content as well as mastery of teaching skills necessary to communicate such content is paramount.

This values statement is intended to be a living document which will serve West Chester University as it changes and evolves in the coming years.

## About West Chester University of Pennsylvania

West Chester University offers bachelors and masters degrees in the arts and sciences, teacher training and certification, advanced study preparation in fields such as medicine and law, education for specific professions, and continuing education.

Total enrollment at West Chester University includes approximately 13,849 undergraduate students and 2,242 graduate students. While most undergraduates are recent high school graduates preparing for career objectives, many others are older individuals, including veterans and homemakers, who either never before had the opportunity for a college education or whose schooling was interrupted.

Most students are residents of Pennsylvania but students from other states and foreign countries are welcome. The student body at West Chester University represents a cross section of many ethnic, racial, and religious groups and includes students from all socioeconomic levels.

Like the world around it, West Chester University is constantly transforming. The school continues to broaden and modify the nature and number of its programs to reflect the needs of its students in their endeavor to prepare themselves for success and fulfillment in life.



## The History of West Chester University of Pennsylvania

Founded in 1871, West Chester University began as West Chester Academy, a private, state-aided school that existed from 1812 to 1869. The academy enjoyed strong support from the highly intellectual Chester County Cabinet of the Natural Sciences of the pre-Civil War decades. It was recognized as one of Pennsylvania's leading preparatory schools, and its experience in teacher training laid the groundwork for the normal school years that were to follow.

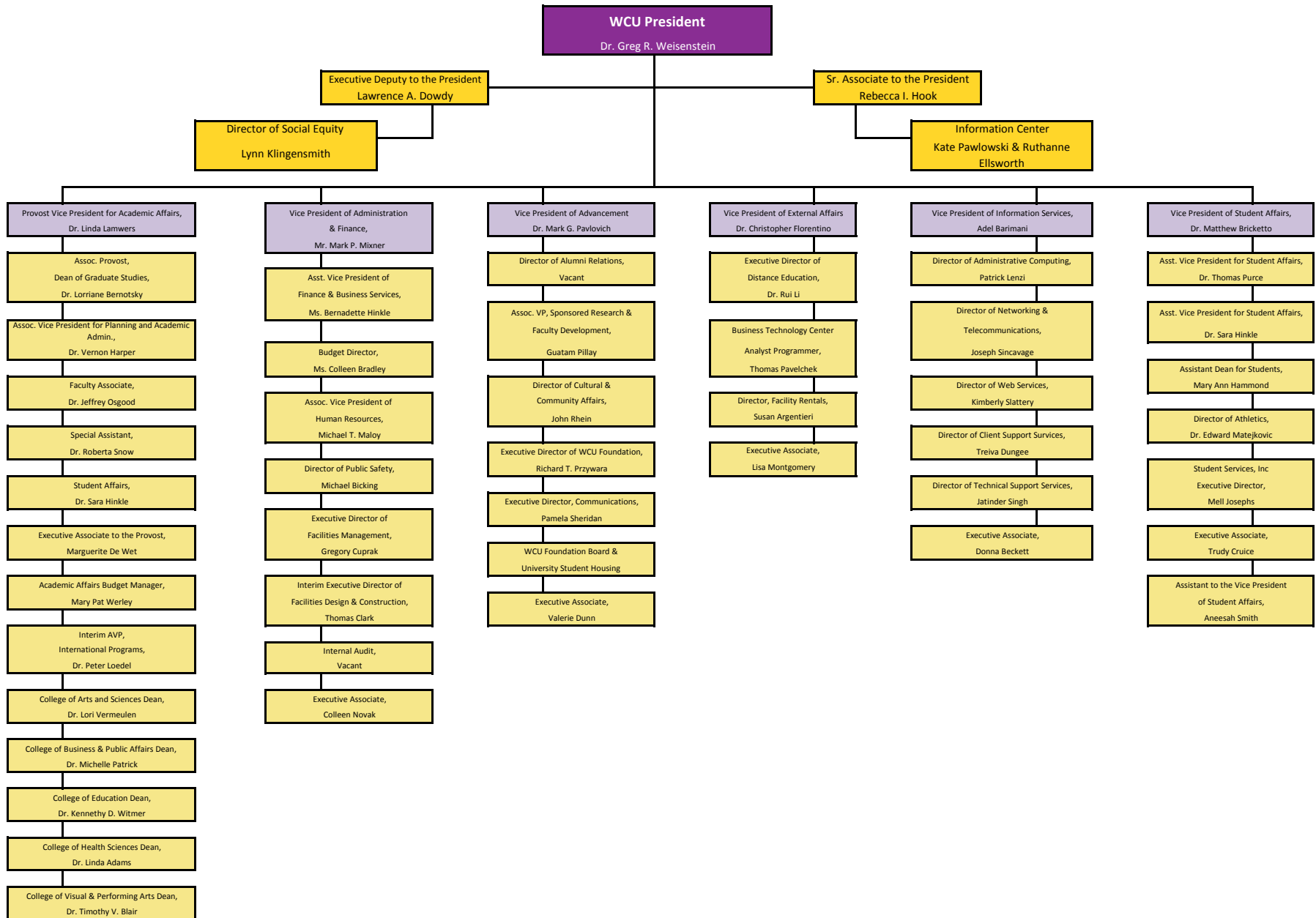
As the state began to take increasing responsibility for public education, the academy was transformed into West Chester Normal School, still privately owned but state certified. The normal school admitted its first class, consisting of 160 students, on September 25, 1871. In 1913, West Chester became the first of the normal schools to be owned outright by the Commonwealth.

West Chester became West Chester State Teachers College in 1927 when Pennsylvania initiated a four-year program of teacher education. In 1960, as the Commonwealth paved the way for liberal arts programs in its college system, West Chester was renamed West Chester State College, and two years later introduced the liberal arts program that turned the one-time academy into a comprehensive college.

In recognition of the historic merit of the campus, in 1981 the West Chester State College Quadrangle Historic District was placed on the National Register of Historic Places. The buildings included in this historic district are Philips Memorial Building, Ruby Jones Hall, Recitation Hall, and the Old Library. Except for Philips, these buildings are all constructed of native Chester County serpentine stone.

West Chester State achieved another major milestone with passage of the State System of Higher Education bill. West Chester became one of the 14 universities in the State System of Higher Education on July 1, 1983. Along with its new name -- West Chester University of Pennsylvania of the State System of Higher Education -- the institution acquired a new system of governance and the opportunity to expand its degree programs.

# Organizational Chart





**ADMISSIONS**

## Undergraduate Admissions Standards

West Chester University prides itself on the holistic approach used in evaluating applicant credentials. Each application is reviewed individually, and we carefully consider scholastic performance and academic preparation to determine an individual's potential for success.

For regular admission as a first-year student we recommend successful completion of a college preparatory curriculum in high school, honors and AP classes are a plus, rank in class in the 50th percentile or better, a grade point average of 3.00+, and a minimum combined SAT score of 1020 or better (prefer a minimum of 500 in both verbal and math). It is important to realize that these factors are guidelines for consideration. The academic profile of the regular admits who enroll at West Chester University is a mean SAT combined score of 1114, a rank in the top 30% of their class or 70% percentile, and a grade point average of 3.59.

Applicants who do not meet regular admissions standards may be considered for a special admissions program if appropriate or denied admission and counseled to enroll at another college or university for a minimum of 24-30 credits before reapplying as a transfer student.

Transfer applicants must have a minimum grade point average of 2.00 for admissions consideration. The majority of our transfers have a Cumulative GPA of 2.50 or better prior to transferring to the University. Some of our academic programs require a higher grade point average and specific course prerequisites. Pennsylvania Community College students who have earned an Associate of Arts or Associate of Science degree and students who have completed 12 or more transferable credits from a State System University with a 2.00 or above have an Academic Passport that provides entry into any university in the State System of Higher Education. For more information on admissions requirements and the Academic Passport, please contact the Office Admissions at (610) 436-3411 or e-mail [ugadmiss@wcupa.edu](mailto:ugadmiss@wcupa.edu)

## Admission Application Statistics for First Time, Full Time, First Year Students Fall 2014

Ethnicity	Fall 2013			Fall 2014			Total	
	Male	Female	Total	Male	Female	Total	Change	% Change
<b>African American</b>								
Applied	526	954	1,480	580	1,021	1,601	121	8.18%
Accepted	221	393	614	244	451	695	81	13.19%
Enrolled	97	134	231	84	148	232	1	0.43%
<b>Asian</b>								
Applied	150	246	396	146	263	409	13	3.28%
Accepted	61	113	174	70	132	202	28	16.09%
Enrolled	18	30	48	15	33	48	0	0.00%
<b>Caucasian</b>								
Applied	3,737	6,619	10,356	3,670	6,177	9,847	-509	-4.92%
Accepted	1,918	3,569	5,487	2,038	3,451	5,489	2	0.04%
Enrolled	616	1,195	1,811	697	1,146	1,843	32	1.77%
<b>Hawaiian/Pacific Islander</b>								
Applied	3	3	6	2	9	11	5	83.33%
Accepted	1	0	1	1	5	6	5	500.00%
Enrolled	1	0	1	0	4	4	3	300.00%
<b>Hispanic</b>								
Applied	285	474	759	331	564	895	136	17.92%
Accepted	145	255	400	176	273	449	49	12.25%
Enrolled	52	70	122	53	66	119	-3	-2.46%
<b>Native American</b>								
Applied	2	7	9	4	17	21	12	133.33%
Accepted	0	2	2	0	1	1	-1	-50.00%
Enrolled	0	1	1	0	1	1	0	0.00%
<b>NRA-International</b>								
Applied	16	24	40	8	8	16	-24	-60.00%
Accepted	8	11	19	2	4	6	-13	-68.42%
Enrolled	2	0	2	2	0	2	0	0.00%

to be continued.....

### Admission Application Statistics for First Time, Full Time, First Year Students: Fall 2014 (continued)

Ethnicity	Fall 2013			Fall 2014			Total	
	Male	Female	Total	Male	Female	Total	Change	%Change
<b>Multiracial</b>								
Applied	142	248	390	148	264	412	22	5.64%
Accepted	79	146	225	85	141	226	1	0.44%
Enrolled	24	52	76	31	48	79	3	3.95%
<b>Not Supplied</b>								
Applied	1	1	2	36	43	79	77	3850.00%
Accepted	0	0	0	19	15	34	34	
Enrolled	0	0	0	10	6	16	16	
<b>Total</b>								
Applied	<b>4,862</b>	<b>8,576</b>	<b>13,438</b>	<b>4,926</b>	<b>8,367</b>	<b>13,293</b>	-145	-1.08%
Accepted	<b>2,433</b>	<b>4,489</b>	<b>6,922</b>	<b>2,635</b>	<b>4,473</b>	<b>7,108</b>	186	2.69%
Enrolled	<b>810</b>	<b>1,482</b>	<b>2,292</b>	<b>892</b>	<b>1,452</b>	<b>2,344</b>	52	2.27%

## First Time, Full Time, First Year Students by Admission Type

Admittance Type	2010		2011		2012		2013		2014	
	N	%	N	%	N	%	N	%	N	%
Regular	1,713	83.1	1,893	82.9	1,935	83.2	1,893	83%	1968	84.0%
ADP ACT 101	57	2.8	55	2.4	51	2.2	73	3%	68	2.9%
ADP Non-ACT 101	101	4.9	104	4.6	103	4.4	108	5%	112	4.8%
Special Admission	191	9.3	231	10.1	237	10.2	218	10%	196	8.4%
<b>Total</b>	<b>2,062</b>		<b>2,283</b>		<b>2,326</b>		<b>2,292</b>		<b>2,344</b>	

## SAT Score Distribution: First Time, Full Time, First Year Students Fall 2014

### SAT- Critical Reading Distribution

Score	2010		2011		2012		2013		2014**	
	N	%	N	%	N	%	N	%	N	%
700 - 800	61	3	37	1.6	28	1.2	29	1.3	29	1.3
600 - 699	484	23.5	392	17.2	396	17	363	15.8	343	15.2
500 - 599	1,163	56.4	1,249	54.7	1,260	54.2	1,261	55	1,266	56
400 - 499	328	15.9	547	24	585	25.2	576	25.1	542	23.9
300 - 399	25	1.2	57	2.5	57	2.5	62	2.7	81	3.6
200 - 299	0	0	1	0	0	0	0	0	0	0
No Scores*	1	0	0	0	0	0	1	0	3	0.1
<b>Total</b>	<b>2,062</b>	<b>100%</b>	<b>2,283</b>	<b>100%</b>	<b>2,326</b>	<b>100%</b>	<b>2,292</b>	<b>100%</b>	<b>2,264</b>	<b>100%</b>

### SAT- Mathematics Distribution

Score	2010		2011		2012		2013		2014**	
	N	%	N	%	N	%	N	%	N	%
700 - 800	38	3.1	27	1.2	33	1.4	38	1.7	23	1
600 - 699	450	18.2	443	19.4	478	20.6	495	21.6	449	19.8
500 - 599	1,135	55.1	1,330	55.1	1,348	58	1,293	56.4	1,272	56.2
400 - 499	375	21.8	427	18.7	428	18.4	387	16.9	437	19.3
300 - 399	63	1.8	56	2.5	39	1.7	78	3.4	80	3.5
200 - 299	0	0	0	0	0	0	0	0	0	0
No Scores*	1	0	0	0	0	0	1	0	3	0.1
<b>Total</b>	<b>2,062</b>	<b>100%</b>	<b>2,283</b>	<b>100%</b>	<b>2,326</b>	<b>100%</b>	<b>2,292</b>	<b>100%</b>	<b>2,264</b>	<b>100%</b>

\*Both SAT and ACT scores were not submitted.

\*\*ACT scores were submitted by 80 students.



## SAT Score Distribution: First Time, Full Time, First Year Students Fall 2014 (continued)

### SAT – Writing Distribution

Score	2010		2011		2012		2013		2014**	
	N	%	N	%	N	%	N	%	N	%
700-800	29	1.4	30	1.3	18	0.1	21	0.9	18	0.8
600-699	315	15.3	331	14.8	335	14.4	368	16.1	317	14.0
500-599	1,046	50.7	1,166	52.1	1,222	52.5	1,127	49.2	1,217	53.8
400-499	564	27.4	642	28.7	633	27.2	619	27	610	27
300-399	69	3.3	69	3.1	69	3	90	3.9	95	4.2
200-299	2	0.1	0	0	0	0	2	0.1	4	0.2
No Scores*	37	1.8	0	0	49	2.1	65	2.8	3	0.1
<b>Total</b>	<b>2,062</b>	<b>100%</b>	<b>2,283</b>	<b>100%</b>	<b>2,326</b>	<b>100%</b>	<b>2,292</b>	<b>100%</b>	<b>2,264</b>	<b>100%</b>

### SAT Average Scores

	Critical Reading			Mathematics			Writing			Combined***		
	WCU	PA	US	WCU	PA	US	WCU	PA	US	WCU	PA	US
Fall 2005	532	501	508	535	503	520				1067	1,004	1,028
Fall 2006	527	493	503	535	500	518				1,062	993	1,028
Fall 2007	525	493	502	533	499	515				1,059	992	1,017
Fall 2008	523	494	502	535	501	515	521	483	494	1,059	995	1,017
Fall 2009	523	493	501	535	501	515	524	483	493	1,059	994	1,016
Fall 2010	544	492	501	533	501	516	528	480	492	1,078	993	1,017
Fall 2011	535	493	497	542	501	514	528	479	489	1,078	994	1,011
Fall 2012	532	491	496	545	501	514	516	480	488	1,077	992	1,010
Fall 2013	534	494	496	545	504	514	528	482	488	1,079	998	1,010
Fall 2014	531	497	497	540	504	513	524	480	487	1,077	1,001	1,010

\*Both SAT and ACT scores were not submitted.

\*\*ACT scores were submitted by 80 students.

\*\*\*Combined Critical Reading and Mathematics scores. ACT scores were converted to SAT combined scores for the computation of average SAT combined score.

## Feeder High Schools: Fall 2014

### Pennsylvania High Schools With the Most Number of Entering First Year Students

<i>School</i>	<i>#</i>
B Reed Henderson High School	39
North Penn High School	39
Bayard Rustin High School	37
Cardinal O'Hara High School	34
Garnet Valley High School	34
Central Bucks HS-South	33
Neshaminy High School	31
Downingtown High School-West	27
Avon Grove High School	27
Bishop Shanahan High School	27
Haverford Township Sr High Sch	27
East Senior High School	25
Council Rock South	25
Spring-Ford Senior High School	24
Central Bucks High School East	23
Springfield High School	23
Downingtown High School-East	23
Archbishop Wood High School	22
Cumberland Valley High School	22
Coatesville Area Sr High Sch	21
Pope John Paul II	20

<i>School</i>	<i>#</i>
Archbishop Carroll High School	20
Pennridge High School	19
Methacton High School	19
Central Bucks High School West	18
Archbishop Ryan High School	18
Parkland High School	18
William Tennent High School	18
Wilson High School	17
Central High School	17
Twin Valley High School	16
Council Rock High School North	16
Pennsbury Hs East Campus	16
Unionville High School	16
Upper Darby High School	16
Marple Newtown High School	16
Emmaus High School	15
Upper Moreland High School	15
Hempfield High School	15
Kennett High School	15
Abington High School	14
Owen J Roberts High School	14

<i>School</i>	<i>#</i>
Upper Dublin High School	14
Quakertown Community Sr High S	13
Freedom High School	13
Conestoga High School	12
Exeter Township Sr High School	12
Great Valley High School	12
Perkiomen Valley High School	12
Cherokee High School	11
Sun Valley High School	11
Penncrest High School	11
Souderton Area High School	11
Oxford Area High School	11
Plymouth-Whitemarsh High Sch	11
Norristown Area High School	11
Mainland Regional High School	10
Mns. Bonner & Arc. Prendergast	10
Philadelphia High School Girls	10
Whitehall High School	10
Easton Area High School	10

## Feeder Colleges: Fall 2014

Institutions Previously Attended With the Most Number of New Fall Undergraduate Transfer Students  
 [Excludes students who transitioned from non-degree to degree as well as Transfers with first degree at WCU]

Name	Count	Percent of Total	Type	State
Delaware County Community College	371	37.29%	2 Year Public	PA
Montgomery County Community College	155	15.58%	2 Year Public	PA
Bucks County Community College	87	8.74%	2 Year Public	PA
Community College of Philadelphia	51	5.13%	2 Year Public	PA
Pennsylvania St Univ. University Park	43	4.32%	4 Year Public	PA
Harrisburg Area Cmty College	35	3.52%	2 Year Public	PA
Millersville University	29	2.91%	4 Year Public	PA
Kutztown University	25	2.51%	4 Year Public	PA
Northampton County Area Community College	24	2.41%	2 Year Public	PA
Indiana University of Pennsylvania	17	1.71%	4 Year Public	PA
Shippensburg University	16	1.61%	4 Year Public	PA
Lehigh Carbon Community College	16	1.61%	2 Year Public	PA
Bloomsburg University	15	1.51%	4 Year Public	PA
Temple University	15	1.51%	4 Year Public	PA
Reading Area Community College	12	1.21%	2 Year Public	PA
Neumann College	11	1.11%	4 Year Private	PA
All Military	10	1.01%	4 Year Public	
York College of PA	10	1.01%	4 Year Private	PA
East Stroudsburg University	9	0.90%	4 Year Public	PA
Cabrini College	9	0.90%	4 Year Private	PA
University of North Dakota Grand Forks	8	0.80%	4 Year Public	ND
Widener University	8	0.80%	4 Year Private	PA
Elizabethtown College	7	0.70%	4 Year Private	PA
Immaculata University	6	0.60%	4 Year Private	PA
Generic College	6	0.60%	4 Year Public	
<b>Total</b>	<b>995</b>	<b>100%</b>		

## First Time, Full Time, First Year Student Enrollment by Pennsylvania County: Fall 2014

### Top 10 Counties with Most Enrollments Ranked

County	Total	Percent	Rank
Adams	11	0.47%	
Allegheny	8	0.34%	
Armstrong	0	0.00%	
Beaver	1	0.04%	
Bedford	0	0.00%	
Berks	78	3.33%	7
Blair	0	0.00%	
Bradford	1	0.04%	
Bucks	276	11.77%	2
Butler	2	0.09%	
Cambria	0	0.00%	
Cameron	0	0.00%	
Carbon	5	0.21%	
Centre	3	0.13%	
Chester	342	14.59%	1
Clarion	1	0.04%	
Clearfield	0	0.00%	
Clinton	1	0.04%	
Columbia	1	0.04%	
Crawford	0	0.00%	
Cumberland	51	2.18%	10
Dauphin	39	1.66%	
Delaware	243	10.37%	4

County	Total	Percent	Rank
Elk	0	0.00%	
Erie	0	0.00%	
Fayette	0	0.00%	
Franklin	5	0.21%	
Fulton	0	0.00%	
Greene	1	0.04%	
Huntingdon	0	0.00%	
Indiana	1	0.04%	
Jefferson	0	0.00%	
Juniata	2	0.09%	
Lackawanna	35	1.49%	
Lancaster	88	3.75%	6
Lawrence	0	0.00%	
Lebanon	13	0.55%	
Lehigh	74	3.16%	8
Luzern	30	1.28%	
Lycoming	7	0.30%	
McKean	0	0.00%	
Mercer	0	0.00%	
Mifflin	0	0.00%	
Monroe	20	0.85%	
Montgomery	266	11.35%	3
Montour	0	0.00%	

County	Total	Percent	Rank
Northampton	52	2.22%	9
Northumberland	9	0.38%	
Perry	2	0.09%	
Philadelphia	224	9.56%	5
Pike	10	0.43%	
Potter	0	0.00%	
Schuylkill	19	0.81%	
Snyder	0	0.00%	
Somerset	0	0.00%	
Sullivan	1	0.04%	
Susquehanna	3	0.13%	
Tioga	0	0.00%	
Union	0	0.00%	
Venango	0	0.00%	
Warren	0	0.00%	
Washington	1	0.04%	
Wayne	3	0.13%	
Westmoreland	2	0.09%	
Wyoming	1	0.04%	
York	50	2.13%	
Out of State	359	15.32%	
Out of Country	3	0.13%	
<b>Total</b>	<b>2,344</b>	<b>100.00%</b>	

## First Time, Full Time, First Year Student Enrollment by State: Fall 2014

### Top 10 States with Most Enrollments Ranked

State	Total	Percent	Rank
Alabama	0	0.00%	
Alaska	0	0.00%	
Arizona	0	0.00%	
Arkansas	0	0.00%	
California	2	0.09%	8(t)
Colorado	0	0.00%	
Connecticut	2	0.09%	8(t)
Delaware	31	1.32%	3
District of Col.	0	0.00%	
Florida	0	0.00%	
Georgia	0	0.00%	
Hawaii	1	0.04%	9(t)
Idaho	0	0.00%	
Illinois	0	0.00%	
Indiana	0	0.00%	
Iowa	0	0.00%	
Kansas	0	0.00%	
Kentucky	0	0.00%	
Louisiana	0	0.00%	
Maine	0	0.00%	
Maryland	22	0.94%	4
Massachusetts	1	0.04%	9(t)
Michigan	1	0.04%	9(t)
Minnesota	0	0.00%	
Mississippi	0	0.00%	
Missouri	0	0.00%	
Montana	0	0.00%	

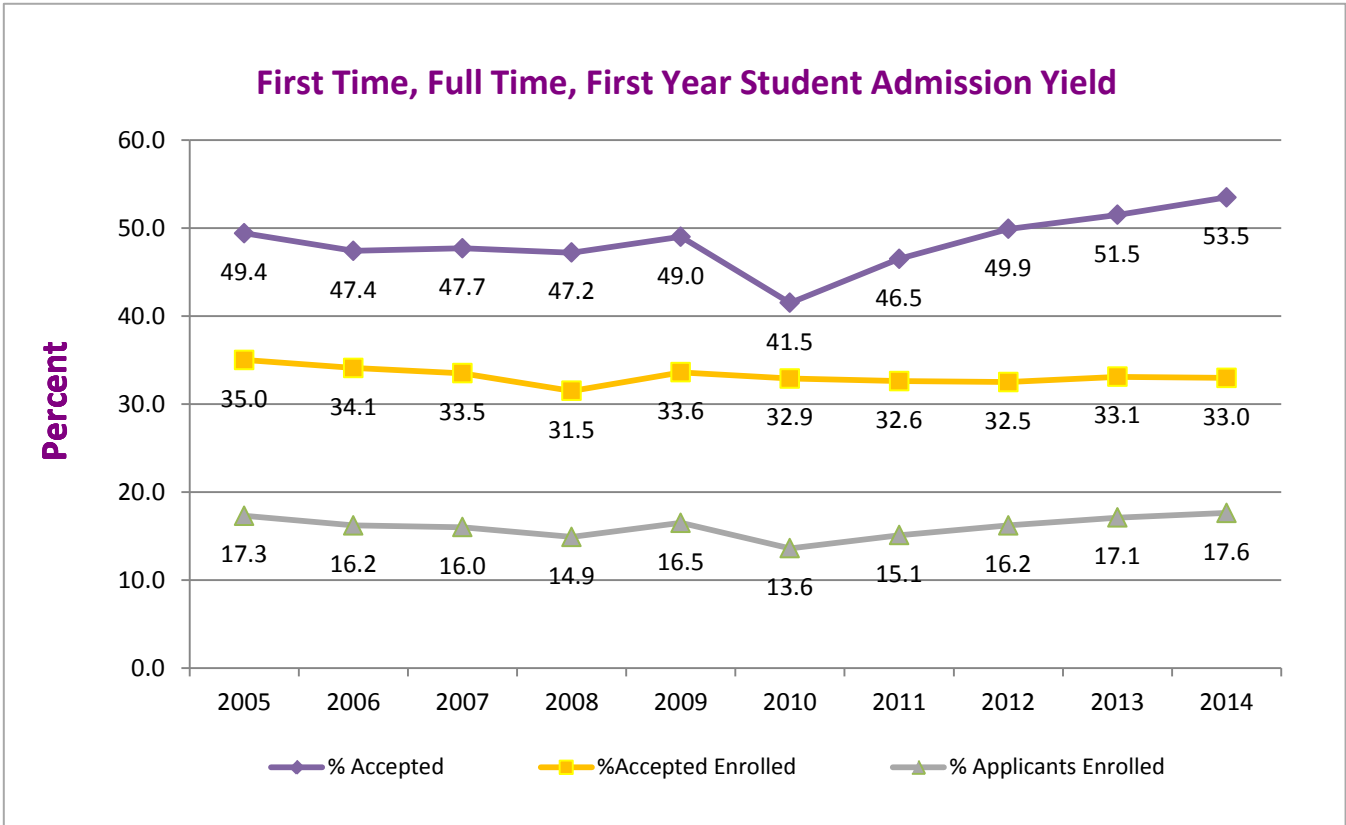
State	Total	Percent	Rank
Nebraska	0	0.00%	
Nevada	0	0.00%	
New Hampshire	0	0.00%	
New Jersey	278	11.86%	2
New Mexico	0	0.00%	
New York	13	0.55%	5
North Carolina	1	0.04%	9(t)
North Dakota	0	0.00%	
Ohio	0	0.00%	
Oklahoma	0	0.00%	
Oregon	0	0.00%	
Pennsylvania	1,982	84.56%	1
Rhode Island	0	0.00%	
South Carolina	0	0.00%	
South Dakota	0	0.00%	
Tennessee	0	0.00%	
Texas	0	0.00%	
Utah	0	0.00%	
Vermont	0	0.00%	
Virginia	6	0.26%	6
Washington	0	0.00%	
West Virginia	1	0.04%	9(t)
Wisconsin	0	0.00%	
Wyoming	0	0.00%	
Armed Forces	0	0.00%	
International	3	0.13%	7
<b>Total</b>	<b>2,344</b>	<b>100.00%</b>	

## Admission Yield Statistics: Fall 2014

### First-Time, Full Time, First Year Student Admission Yield

Year	# of Applicants	# Accepted	% Accepted	# Full-Time Enrolled	% Accepted Full-time Enrolled	% of Applicants Enrolled
2005	11,013	5,438	49.4	1,901	35	17.3
2006	11,669	5,530	47.4	1,885	34.1	16.2
2007	12,237	5,834	47.7	1,957	33.5	16.0
2008	13,353	6,317	47.2	1,993	31.5	14.9
2009	13,615	6,667	49	2,241	33.6	16.5
2010	15,123	6,268	41.5	2,062	32.9	13.6
2011	15,080	7,013	46.5	2,283	32.6	15.1
2012	14,356	7,161	49.9	2,326	32.5	16.2
2013*	13,438	6,922	51.5	2,292	33.1	17.1
2014 *	13,293	7,108	53.5	2,344	33.0	17.6
<b>5-YR Change</b>	<b>-2.4%</b>	<b>6.6%</b>	<b>9.1%</b>	<b>4.6%</b>	<b>-1.9%</b>	<b>6.9%</b>
<b>1-YR Change</b>	<b>-1.1%</b>	<b>2.7%</b>	<b>3.8%</b>	<b>2.3%</b>	<b>-0.4%</b>	<b>3.1%</b>

\*Starting Fall 2013, number of applicants includes completed applications only.



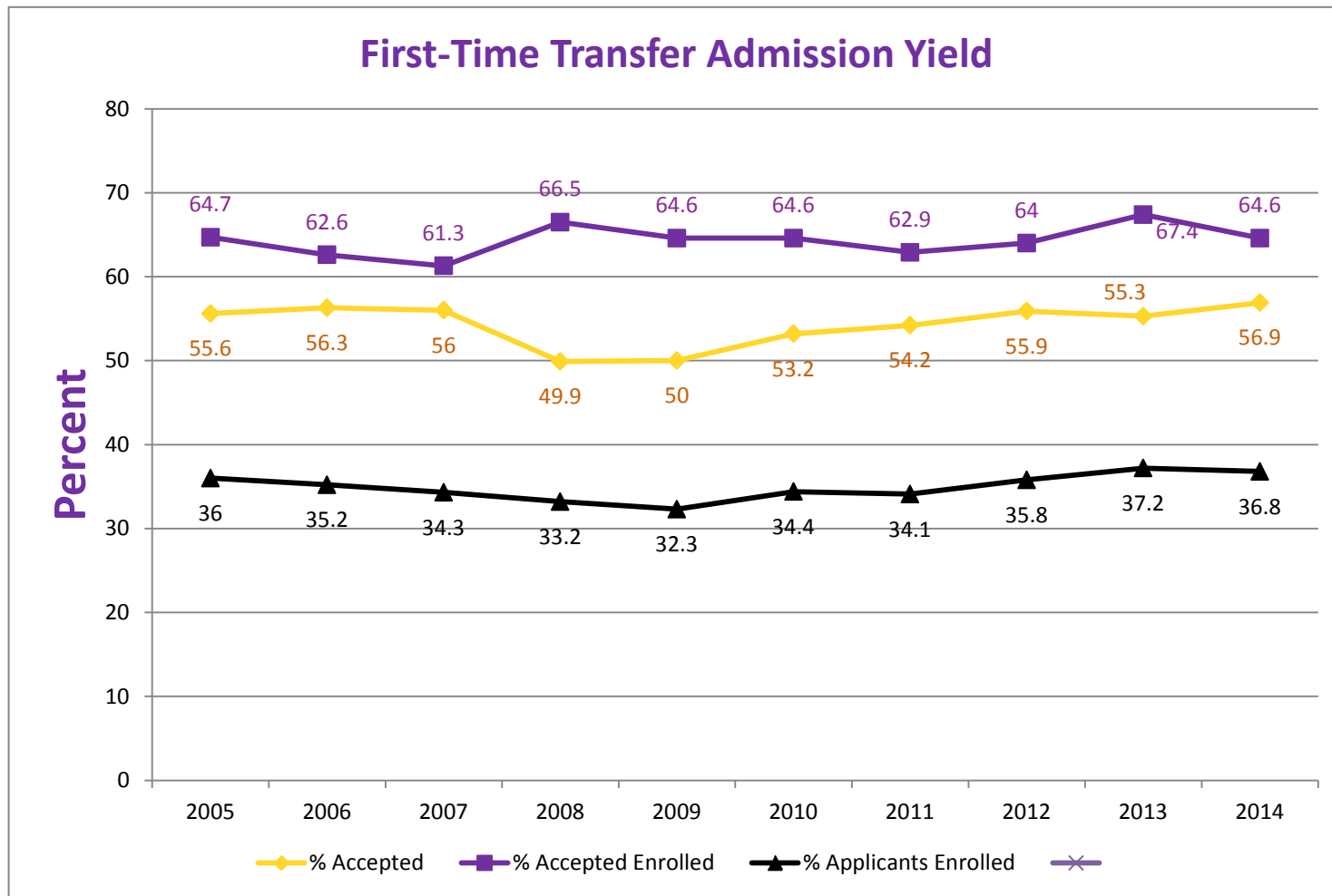
Starting Fall 2013, number of applicants includes completed applications only.

## First-Time Transfer Admission Yield : Fall 2014

Year	# of Applicants	# Accepted	% Accepted	# Enrolled	% of Accepted Enrolled	% of Applicants Enrolled
2006	2,690	1,514	56.3	948	62.6	35.2
2007	2,839	1,589	56.0	974	61.3	34.3
2008	3,224	1,609	49.9	1070	66.5	33.2
2009	3,639	1,821	50.0	1,176	64.6	32.3
2010	3,607	1,920	53.2	1,241	64.6	34.4
2011	3,742	2,029	54.2	1,276	62.9	34.1
2012	3,678	2,057	55.9	1,316	64	35.8
2013*	3,625	2,003	55.3	1,350	67.4	37.2
2014*	3,621	2,061	56.9	1,331	64.6	36.8
<b>5-YR Change</b>	<b>-0.5%</b>	<b>13.2%</b>	<b>13.8%</b>	<b>13.2%</b>	<b>0.0%</b>	<b>13.8%</b>
<b>1-YR Change</b>	<b>-0.1%</b>	<b>2.9%</b>	<b>3.0%</b>	<b>-1.4%</b>	<b>-4.2%</b>	<b>-1.3%</b>

\*Starting Fall 2013, number of applicants includes completed applications only.





Starting Fall 2013, number of applicants includes completed applications only.



# **ENROLLMENT**

## Head Count Enrollment by Gender and Ethnicity: Fall 2014

Gender	Undergraduate		Graduate		Total*
	Full-Time	Part-time	Full-Time	Part-time	
Male	4,991	560	261	460	6,272
Female	7,591	707	581	940	9,819
<b>Total</b>	12,582	1,267	842	1,400	16,091

Ethnicity	Undergraduate		Graduate		Total*
	Full-Time	Part-time	Full-Time	Part-time	
African American	1,201	149	129	166	1,645
Native American	11	3	2	2	18
Asian	261	33	15	47	356
Caucasian	10,058	974	578	1,103	12,713
Hawaiian/Pacific Islander	12	2	0	3	17
Hispanic	621	69	35	32	757
Non-Resident Alien	40	1	63	22	126
Multiracial	342	21	19	13	395
Not Supplied	36	15	1	12	64
<b>Total</b>	12,582	1,267	842	1,400	16,091

\*These headcounts are unduplicated counts within student's career level and do not reflect IPEDS unduplicated headcount.

## Head Count Enrollment by Degree Status and College: Fall 2014

Degree Status	Undergraduate		Graduate		Total*
	Full-Time	Part-time	Full-Time	Part-time	
Degree Seeking	12,560	1,053	790	1,033	15,436
Non-degree Seeking	22	214	52	367	655
<b>Total</b>	<b>12,582</b>	<b>1,267</b>	<b>842</b>	<b>1,400</b>	<b>16,091</b>

College	Undergraduate		Graduate		Total*
	Full-Time	Part-time	Full-Time	Part-time	
Arts and Sciences	3,869	400	193	302	4,764
Business and Public Affairs	3,064	297	260	326	3,947
Education	1,086	23	148	407	1,664
Health Sciences	2,312	260	205	165	2,942
Visual and Performing Arts	608	38	27	42	715
Educational Services**	1,643	249	9	158	2,059
<b>Total</b>	<b>12,582</b>	<b>1,267</b>	<b>842</b>	<b>1,400</b>	<b>16,091</b>

\*These headcounts are unduplicated counts within student's career level and do not reflect IPEDS unduplicated headcount.

\*\*Educational Services include non-degree and undeclared major students.

## Enrollment by State at the Time of Admission: Fall 2011 to Fall 2014

STATE	Fall 2011			Fall 2012			Fall 2013			Fall 2014			Rank
	UG	G	Total	UG	G	Total	UG	G	Total	UG	G	Total	
Alabama		1	1		2	2							
Alaska	1		1	1	1	2	1		1	1		1	
Arizona		1	1								1	1	
Arkansas	1	1	2	1		1		1	1		1	1	
California	2	2	4	7	1	8	14	1	15	9	4	13	8
Colorado	1		1	1		1	2	1	3		1	1	
Connecticut	14	2	16	11	2	13	15		15	15		15	7
Delaware	159	48	207	158	58	216	170	51	221	152	50	202	3
District of Col.	3	1	4	2		2	1	1	2	1	2	3	
Florida	5	1	6	9	2	11	7	3	10	7	1	8	10(t)
Georgia		1	1		1	1	3	1	4	2		2	
Hawaii	1		1				1	1	2	2		2	
Idaho											1	1	
Illinois	3	2	5	1	1	1							
Indiana	2		2	2		2	1	1	2				
Iowa	1		1				2	1	3	1	1	2	
Kansas													
Kentucky		3	3		3	3							
Louisiana		1	1		1	1		1	1		1	1	
Maine	1	1	2	2		2	2		2	1	1	2	
Maryland	78	18	96	71	13	84	74	9		80	13	93	4
Massachusetts	7	3	10	7	3	10	5	4	9	4	5	9	9
Michigan		2	2	2	2	4	2	3	5	4	1	5	
Minnesota		1	1	1	1	2				1		1	
Mississippi		1	1										
Missouri					1	1		1	1		1	1	
Montana													
Nebraska													
Nevada										1		1	
New Hampshire	2		2	2		2	2		2	2	1	3	

to be continued.....

## Enrollment by State at the Time of Admission: Fall 2011 to Fall 2014 (continued)

STATE	Fall 2011			Fall 2012			Fall 2013			Fall 2014			Rank
	UG	G	Total	UG	G	Total	UG	G	Total	UG	G	Total	
New Jersey	1,151	63	1,214	1,243	57	1,300	1,389	67	1,456	1,343	61	1,404	2
New Mexico		2	2		2	2							
New York	47	14	61	48	13	61	56	11	67	60	8	68	5
North Carolina	3		3	3		3	2	1	3	4	4	8	10(t)
North Dakota													
Ohio	4	2	6	4	2	6	4	4	8	1	2	3	
Oklahoma		1	1										
Oregon							1		1	1	1	2	
Pennsylvania	11,271	2,045	13,316	11,645	1,889	13,534	11,880	1,879	13,759	12,075	1,974	14,049	1
Rhode Island					1	1		1	1		1	1	
South Carolina		1	1	1	1	2	2	1	3	2	1	3	
South Dakota													
Tennessee							1		1	1		1	
Texas	6	1	7	3		3	4		4	2		2	
Utah													
Vermont				1		1							
Virginia	15	5	20	14	5	19	17	5	22	16	5	21	6
Virgin Islands													
Washington	2		2	2		2	2		2				
West Virginia	3		3	3		3	1	1	2	1		1	
Wisconsin	1		1					1	1	1	2	3	
Wyoming													
Armed Forces	2		2	2		2	2		2	1		1	
International	48	42	90	53	52	105	50	83	133	58	97	155	
Other											1	1	
<b>TOTAL</b>	<b>12,834</b>	<b>2,266</b>	<b>15,100</b>	<b>13,301</b>	<b>2,114</b>	<b>15,415</b>	<b>13,713</b>	<b>2,134</b>	<b>15,847</b>	<b>13,849</b>	<b>2,242</b>	<b>16,091</b>	
<b>In-State</b>	<b>11,271</b>	<b>2,045</b>	<b>13,316</b>	<b>11,645</b>	<b>1,889</b>	<b>13,534</b>	<b>11,880</b>	<b>1,879</b>	<b>13,759</b>	<b>12,075</b>	<b>1,974</b>	<b>14,049</b>	
<b>Out-of-State</b>	<b>1,563</b>	<b>221</b>	<b>1,784</b>	<b>1,656</b>	<b>225</b>	<b>1,881</b>	<b>1,833</b>	<b>255</b>	<b>2,088</b>	<b>1,774</b>	<b>268</b>	<b>2,042</b>	
<b>Out-of-State %</b>	<b>12.18%</b>	<b>9.75%</b>	<b>11.81%</b>	<b>12.45%</b>	<b>10.64%</b>	<b>12.20%</b>	<b>13.37%</b>	<b>11.95%</b>	<b>13.18%</b>	<b>12.81%</b>	<b>11.95%</b>	<b>12.69%</b>	

## Enrollment by County for Pennsylvania Residents: Fall 2014

### Top 10 Counties\* With Most Enrollments Ranked

County	Total	Percent	Rank
Adams	53	0.33%	
Allegheny	40	0.25%	
Armstrong	0	0.00%	
Beaver	5	0.03%	
Bedford	2	0.01%	
Berks	496	3.08%	6
Blair	8	0.05%	
Bradford	6	0.04%	
Bucks	1,390	8.64%	4
Butler	5	0.03%	
Cambria	1	0.01%	
Cameron	1	0.01%	
Carbon	27	0.17%	
Centre	14	0.09%	
Chester	3,575	22.22%	1
Clarion	2	0.01%	
Clearfield	4	0.02%	
Clinton	3	0.02%	
Columbia	14	0.09%	
Crawford	3	0.02%	
Cumberland	211	1.31%	
Dauphin	221	1.37%	
Delaware	2,442	15.18%	2
Elk	0	0.00%	

County	Total	Percent	Rank
Erie	4	0.02%	
Fayette	0	0.00%	
Franklin	31	0.19%	
Fulton	0	0.00%	
Greene	1	0.01%	
Huntingdon	4	0.02%	
Indiana	1	0.01%	
Jefferson	0	0.00%	
Juniata	5	0.03%	
Lackawanna	177	1.10%	
Lancaster	457	2.84%	7
Lawrence	1	0.01%	
Lebanon	65	0.40%	
Lehigh	342	2.13%	8
Luzerne	126	0.78%	
Lycoming	31	0.19%	
McKean	2	0.01%	
Mercer	1	0.01%	
Mifflin	3	0.02%	
Monroe	105	0.65%	
Montgomery	2,055	12.77%	3
Montour	4	0.02%	
Northampton	285	1.77%	10
Northumberland	22	0.14%	

County	Total	Percent	Rank
Perry	15	0.09%	
Philadelphia	1,236	7.68%	5
Pike	47	0.29%	
Potter	2	0.01%	
Schuylkill	71	0.44%	
Snyder	13	0.08%	
Somerset	2	0.01%	
Sullivan	1	0.01%	
Susquehanna	21	0.13%	
Tioga	2	0.01%	
Union	4	0.02%	
Venango	0	0.00%	
Warren	1	0.01%	
Washington	4	0.02%	
Wayne	27	0.17%	
Westmoreland	11	0.07%	
Wyoming	14	0.09%	
York	333	2.07%	9
Out of State	1,887	11.73%	
International	155	0.96%	
<b>Total</b>	<b>16,091</b>	<b>100%</b>	

\*County at the time of admission.

## Head Count Enrollment: Fall 2010 to 2014: Five-Year Enrollment by Ethnicity and Gender

### Undergraduate Students

Ethnicity	2010		2011		2012		2013		2014	
	Male	Female	Male	Female	Male	Female	Male	Female	Male	Female
Caucasian	4,228	6,032	4,412	6,216	4,480	6,434	4,492	6,646	4,460	6,572
African American	390	696	419	721	415	730	494	753	493	857
Hispanic	162	273	210	339	245	369	267	369	118	176
Asian	98	148	113	126	121	132	123	167	286	404
Hawaiian/Pacific Islander	3	1	2	1	2	5	3	5	2	12
Native American	13	21	9	17	6	13	5	10	3	11
NRA-International	11	23	19	29	19	29	18	26	20	21
Multiracial	39	49	78	86	100	126	134	188	145	218
Not Supplied	25	22	20	17	37	38	7	6	24	27
<b>Total</b>	<b>4,969</b>	<b>7,265</b>	<b>5,282</b>	<b>7,552</b>	<b>5,425</b>	<b>7,876</b>	<b>5,543</b>	<b>8,170</b>	<b>5,551</b>	<b>8,298</b>

### Graduate Students

Ethnicity	2010		2011		2012		2013		2014	
	Male	Female	Male	Female	Male	Female	Male	Female	Male	Female
Caucasian	523	1,350	532	1,308	485	1,149	509	1,133	539	1,142
African American	58	136	64	167	77	159	74	176	86	209
Hispanic	13	38	11	42	18	39	17	46	18	44
Asian	22	35	24	34	24	33	18	35	18	49
Hawaiian/Pacific Islander		1		1		1	1		3	
Native American	2	5	2	1	0	4	1	4	1	3
NRA-International	24		19	28	14	39	30	45	39	46
Multiracial	2	6	5	16	6	14	10	17	13	19
Not Supplied	3	4	3	9	22	30	7	11	4	9
<b>Total</b>	<b>647</b>	<b>1,575</b>	<b>660</b>	<b>1,606</b>	<b>646</b>	<b>1,468</b>	<b>667</b>	<b>1,467</b>	<b>721</b>	<b>1,521</b>



## Head Count Enrollment: Fall 2010 to 2014 Enrollment by College

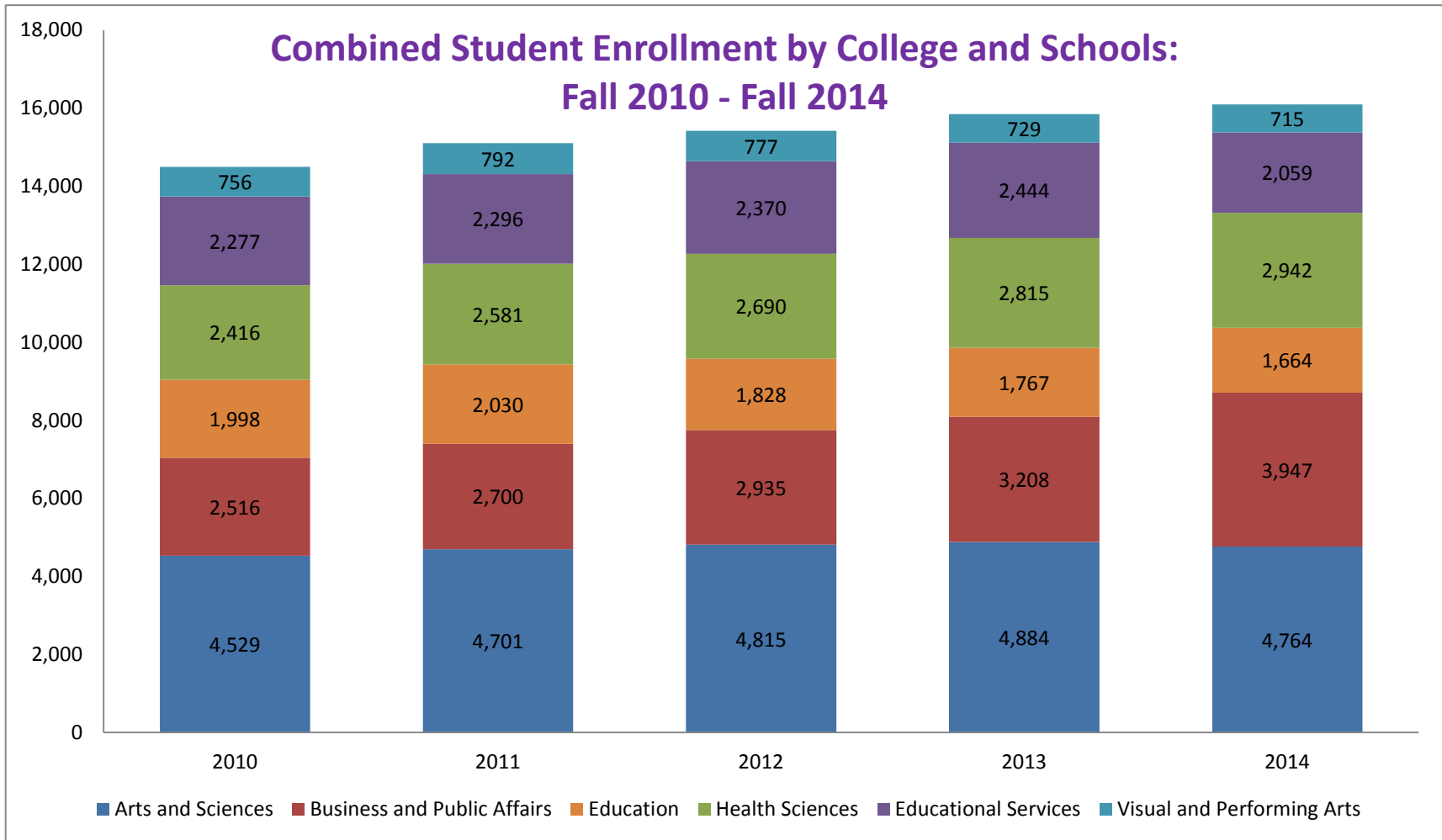
### Undergraduate Students

<b>College</b>	<b>2010</b>	<b>2011</b>	<b>2012</b>	<b>2013</b>	<b>2014</b>
Arts and Sciences	3,964	4,161	4,334	4,406	4,269
Business and Public Affairs	2,196	2,327	2,551	2,703	3,361
Education	1,295	1,310	1,233	1,199	1,109
Health Sciences	2,069	2,243	2,348	2,481	2,572
Visual & Performing Arts	685	728	706	660	646
Educational Services*	2,025	2,065	2,169	2,264	1,892
<b>Total</b>	<b>12,234</b>	<b>12,834</b>	<b>13,301</b>	<b>13,713</b>	<b>13,849</b>

### Graduate Students

<b>College</b>	<b>2010</b>	<b>2011</b>	<b>2012</b>	<b>2013</b>	<b>2014</b>
Arts and Sciences	565	540	481	478	495
Business and Public Affairs	320	373	424	505	586
Education	703	720	595	568	555
Health Sciences	347	338	342	334	370
Visual & Performing Arts	71	64	71	69	69
Educational Services*	252	231	201	180	167
<b>Total</b>	<b>2,258</b>	<b>2,266</b>	<b>2,114</b>	<b>2,134</b>	<b>2,242</b>

\*Educational Services include non-degree and undeclared major students\*

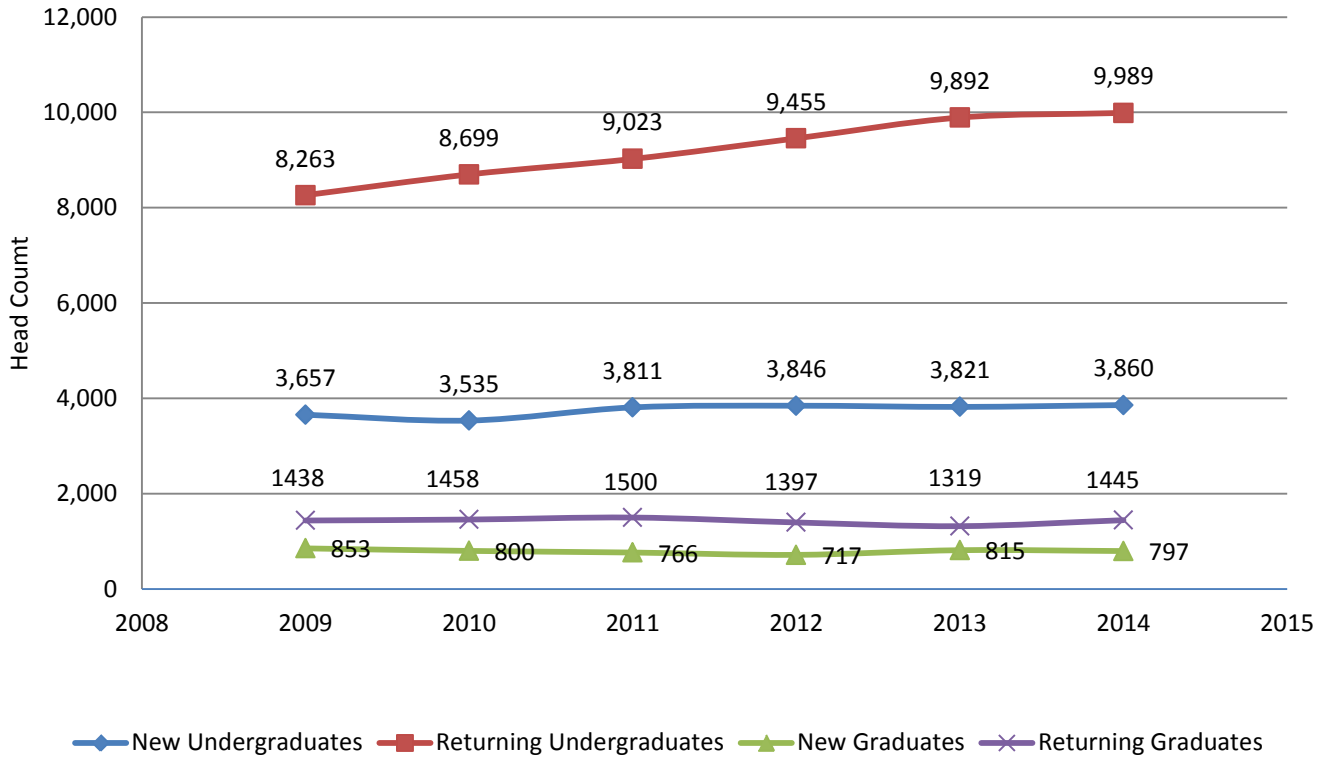


Note: Non-degree and undeclared major students are included in Educational Services.

## Head Count Enrollment by Student Level: Fall 2009 to Fall 2014

Fall Semester	2009	2010	2011	2012	2013	2014	One Year Difference
<b>Undergraduate</b>							
New First Year Degree Seeking	2,248	2,067	2,292	2,334	2,298	2,351	53
New Transfer Degree Seeking	1,179	1,241	1,276	1,316	1,350	1,331	-19
New Readmits Degree Seeking	87	87	104	98	76	107	31
New Undergraduate Non Degree	143	140	139	98	97	71	-26
Returning Undergraduate Degree Seeking First Year	669	710	565	604	657	555	-102
Returning Undergraduate Degree Seeking Sophomore	2,110	2,358	2,414	2,432	2,585	2,650	65
Returning Undergraduate Degree Seeking Junior	2,373	2,366	2,670	2,746	2,912	2,969	57
Returning Undergraduate Degree Seeking Senior	2,894	3,046	3,200	3,525	3,579	3,650	71
Returning Undergraduate Non Degree	217	219	174	148	159	165	6
<b>Graduate</b>							
New Masters	549	566	557	533	621	612	-9
New Doctorate	-	-	-	-	-	17	17
New Graduate Non Degree	304	234	209	184	194	168	-26
Returning Masters	1,143	1,154	1,189	1,163	1,132	1,211	79
Returning Doctorate	-	-	-	-	-	15	15
Returning Graduate Non Degree	295	304	311	234	187	219	32
<b>Total Enrollment</b>	<b>14,211</b>	<b>14,492</b>	<b>15,100</b>	<b>15,415</b>	<b>15,847</b>	<b>16,091</b>	<b>244</b>

## Head Count Enrollment by Student Level Fall 2009 to Fall 2014



## Credit Hours and Student FTE Enrollment FY 2009-10 to FY 2013-14

### Student FTE Enrollment: FY 2009-10 to FY 2013-14

FTE Division	2009-10	2010-11	2011-12	2012-13	2013-14	One Year Difference
Lower Division Full-Time Equivalent Students	7,499.0	7,697.1	7,830.1	8,070.5	8,184.6	114.1
Upper Division Full-Time Equivalent Students	4,472.0	4,512.2	4,762.4	5,066.5	5,179.0	112.5
Graduate Division Full-Time Equivalent Students	1,521.0	1,538.1	1,466.0	1,405.7	1,466.8	61.1
<b>Total Full-Time Equivalent Students</b>	<b>13,492.0</b>	<b>13,747.4</b>	<b>14,058.5</b>	<b>14,542.7</b>	<b>14,830.4</b>	<b>287.7</b>

### Credit Hours: FY 2009-10 to FY 2013-14

College	2009-10	2010-11	2011-12	2012-13	2013-14	One Year Difference
Arts & Sciences	190,846.0	201,594.0	214,760.0	223,408.0	226,390.0	2,982.0
Business and Public Affairs	63,522.0	62,636.0	66,512.0	72,822.0	76,213.0	3,391.0
Education	48,049.0	45,471.0	42,496.0	40,114.0	39,302.0	-812.0
Health Sciences	55,532.0	58,188.0	59,061.5	60,464.5	64,313.0	3,848.5
Visual and Performing Arts	28,571.5	26,892.0	27,566.0	28,115.5	27,131.0	-984.5
Educational Services*	1,926.0	1,911.0	2,562.0	2,923.5	2,760.0	-163.5
<b>Total University Credit Hours</b>	<b>388,446.5</b>	<b>396,692.0</b>	<b>412,957.5</b>	<b>427,847.5</b>	<b>436,109.0</b>	<b>8,261.5</b>

\*Educational Services include non-degree and undeclared major students.

## Credit Hours by College and Course division For FY 2013-14

College	Lower	Upper	Total Undergraduate	Graduate	Total	% Graduate
Arts & Sciences	165,082.0	53,481.0	218,563.0	7,827.0	226,390.0	3.5%
Business and Public Affairs	28,047.0	38,504.0	66,551.0	9,662.0	76,213.0	12.7%
Education	7,305.0	23,360.0	30,665.0	8,637.0	39,302.0	22.0%
Health Sciences	24,932.0	31,594.0	56,526.0	7,788.0	64,314.0	12.1%
Visual and Performing Arts	19,044.0	6,800.0	25,844.0	1,288.0	27,132.0	4.7%
Educational Services*	1,129.0	1,631.0	2,760.0	0.0	2,760.0	0.0%
<b>Total University Credit Hours</b>	<b>245,539.0</b>	<b>155,370.0</b>	<b>400,909.0</b>	<b>35,202.0</b>	<b>436,111.0</b>	<b>8.1%</b>

\*Educational Services include non-degree and undeclared students.

A large purple graphic element consisting of a vertical bar on the right side and two horizontal bars extending to the left from the top and bottom of the vertical bar, framing the title.

# **RETENTION AND GRADUATION**

### Retention and Graduation Rates for First-time, Full-Time, First-Year, Degree-Seeking Student Cohorts --University Summary

Fall Cohort	N 1st Fall	2nd Fall		3rd Fall		4th Fall		5th Fall				6th Fall				7th Fall			
		Cohort Retained		Cohort Retained		Cohort Retained		Cumulative Graduated within 4 yrs*		Cohort Retained		Cumulative Graduated within 5 yrs		Cohort Retained		Cumulative Graduated within 6 yrs		Cohort Retained	
		n	% 1F	n	% 1F	n	% 1F	n	% 1F	n	% 1F	n	% 1F	n	% 1F	n	% 1F	n	% 1F
2001	1625	1384	85.2	1222	75.2	1149	70.7	571	35.1	520	32.0	996	61.3	79	4.9	1050	64.6	29	1.8
2002	1766	1461	82.7	1290	73.0	1236	70.0	642	36.4	536	30.4	1049	59.4	97	5.5	1123	63.6	25	1.4
2003	1723	1466	85.1	1298	75.3	1207	70.1	685	39.8	481	27.9	1053	61.1	89	5.2	1121	65.1	21	1.2
2004	1870	1570	84.0	1361	72.8	1306	69.8	734	39.3	535	28.6	1155	61.8	95	5.1	1223	65.4	29	1.6
2005	1898	1607	84.8	1442	76.1	1378	72.8	814	42.9	528	27.9	1239	65.3	81	4.3	1299	68.4	26	1.4
2006	1883	1616	85.8	1467	77.9	1401	74.4	803	42.6	553	29.4	1233	65.5	93	4.9	1298	68.9	26	1.4
2007	1957	1650	84.4	1511	77.3	1428	73.0	857	43.8	536	27.4	1266	64.8	96	4.9	1344	68.7	27	1.4
2008	1992	1683	84.5	1517	76.2	1453	72.9	872	43.8	525	26.4	1269	63.7	108	5.4	1333	66.9	36	1.8
2009	2241	1909	85.2	1747	78.0	1693	75.5	954	42.6	670	29.9	1489	66.4	113	5.0				
2010	2062	1775	86.1	1638	79.4	1568	76.0	930	45.1	556	27.0								
2011	2283	1950	85.4	1822	79.8	1733	75.9												
2012	2326	2032	87.4	1882	80.9														
2013	2292	2014	87.9																
2014	2344																		

Note: Data is from Fall enrollment at census dates and completions files as reported to IPEDS. Includes degree sweeps and IPEDS exclusions through 10/2014



## Second-Year Retention Rates for First-Time, Full-Time, Degree-Seeking First Year by Race/Ethnicity

Fall Cohort	African American			Asian			Latino			Native American			Caucasian		
	N 1 <sup>st</sup> Fall	N 2 <sup>nd</sup> Fall	% Retained	N 1 <sup>st</sup> Fall	N 2 <sup>nd</sup> Fall	% Retained	N 1 <sup>st</sup> Fall	N 2 <sup>nd</sup> Fall	% Retained	N 1 <sup>st</sup> Fall	N 2 <sup>nd</sup> Fall	% Retained	N 1 <sup>st</sup> Fall	N 2 <sup>nd</sup> Fall	% Retained
2007	190	151	79.5	39	35	89.7	61	44	71.0	9	9	100.0	1655	1411	85.3
2008	201	168	83.6	43	37	84.1	90	77	85.6	5	4	80.0	1647	1396	84.8
2009	177	152	85.3	39	34	87.2	85	64	75.3	6	6	100.0	1908	1631	85.5
2010	203	171	83.8	41	36	87.8	115	88	76.5	2	1	50.0	1644	1424	86.6
2011	191	154	80.6	30	26	86.7	162	132	81.5	1	1	100.0	1839	1588	86.4
2012	211	181	85.8	48	43	89.6	136	114	83.8	0	0	0.0	1881	1652	87.8
2013	231	193	83.5	48	44	91.7	122	102	83.6	1	1	100.0	1811	1605	88.6
2014	232			48			119			1			1843		

Note: Data is from Fall enrollment at census dates and completions files as reported to IPEDS. Includes degree sweeps and IPEDS exclusions through 10/2014

## Second-Year Retention Rates for First-Time, Full-Time, Degree-Seeking First Year by Gender

Fall Cohort	Male			Female		
	N 1 <sup>st</sup> Fall	N 2 <sup>nd</sup> Fall	% Retained	N 1 <sup>st</sup> Fall	N 2 <sup>nd</sup> Fall	% Retained
2007	740	612	82.7	1215	1038	85.4
2008	761	635	83.4	1231	1048	85.1
2009	888	745	83.9	1353	1164	86.0
2010	767	643	83.8	1295	1132	87.4
2011	904	754	83.4	1379	1196	86.7
2012	869	764	87.9	1457	1268	87.0
2013	810	687	84.8	1482	1327	89.5
2014	892			1452		

Note: Data is from Fall enrollment at census dates and completions files as reported to IPEDS. Includes degree sweeps and IPEDS exclusions through 10/2014

### Four Year Graduation Rates for First-Time, Full-Time First Year by Ethnicity

Fall Cohort	African American			Asian			Latino			Native American			Caucasian		
	N 1st Fall	N Grad	% Grad	N 1st Fall	N Grad	% Grad	N 1st Fall	N Grad	% Grad	N 1st Fall	N Grad	% Grad	N 1st Fall	N Grad	% Grad
2005	170	51	30.0	38	13	34.2	66	26	39.4	3	1	33.3	1618	723	44.7
2006	171	43	25.1	41	14	34.1	66	18	27.3	5	1	20.0	1596	727	45.7
2007	190	45	23.7	39	18	46.2	61	14	23.0	9	4	44.4	1655	776	46.9
2008	201	38	18.9	43	20	46.5	90	33	36.7	5	2	40.0	1647	777	47.2
2009	177	29	16.4	39	11	28.2	85	20	23.5	6	1	16.7	1908	881	46.2
2010	203	43	21.2	41	16	39.0	115	31	27.0	2	1	50.0	1644	814	49.5

Note: Data is from Fall enrollment at census dates and completions files as reported to IPEDS. Includes degree sweeps and IPEDS exclusions through 10/2014

### Six Year Graduation Rates for First-Time, Full-Time First Year by Ethnicity

Fall Cohort	African American			Asian			Latino			Native American			Caucasian		
	N 1st Fall	N Grad	% Grad	N 1st Fall	N Grad	% Grad	N 1st Fall	N Grad	% Grad	N 1st Fall	N Grad	% Grad	N 1st Fall	N Grad	% Grad
2003	183	98	53.6	25	14	56.0	58	34	58.6	1	0	0.0	1445	970	67.1
2004	164	87	53.0	35	20	57.1	58	35	60.3	4	1	25.0	1608	1080	67.2
2005	170	98	57.6	38	25	65.8	66	40	60.6	3	1	33.3	1618	1135	70.1
2006	171	98	57.3	41	24	58.5	66	33	50.0	5	3	60.0	1596	1136	71.2
2007	190	97	51.1	39	28	71.8	61	32	52.5	9	7	77.8	1655	1180	71.3
2008	201	107	53.2	43	31	72.1	90	62	68.9	5	4	80.0	1647	1126	68.4

Note: Data is from Fall enrollment at census dates and completions files as reported to IPEDS. Includes degree sweeps and IPEDS exclusions through 10/2014

**Four Year Graduation Rates for First-Time, Full-Time First Year by Gender**

Fall Cohort	Male			Female		
	N 1st Fall	4 Yr Grad		N 1st Fall	4 Yr Grad	
		#	%		#	%
2005	679	216	31.8	1219	598	49.1
2006	683	196	28.7	1200	607	50.6
2007	740	235	31.8	1215	622	51.2
2008	761	232	30.5	1231	640	52.0
2009	888	277	31.2	1353	677	50.0
2010	767	255	33.2	1295	675	52.1

Note: Data is from Fall enrollment at census dates and completions files as reported to IPEDS. Includes degree sweeps and IPEDS exclusions through 10/2014

**Six Year Graduation Rates for First-Time, Full-Time First Year by Gender**

Fall Cohort	Male			Female		
	N 1st Fall	6Yr Grad		N 1st Fall	6 Yr Grad	
		#	%		#	%
2003	604	355	58.8	1119	766	68.5
2004	656	382	58.2	1214	841	69.3
2005	679	419	61.7	1219	880	72.2
2006	683	401	58.7	1200	897	74.8
2007	740	454	61.4	1215	890	73.3
2008	761	459	60.3	1231	874	71.0

Note: Data is from Fall enrollment at census dates and completions files as reported to IPEDS. Includes degree sweeps and IPEDS exclusions through 10/2014

A large purple graphic element consisting of a thick horizontal bar on the right side, with a vertical bar extending downwards from its bottom edge, forming an L-shape. The text is contained within a white rectangular box with a black border that overlaps the top and left sides of the purple graphic.

# **ACADEMIC DEGREE AND CERTIFICATE PROGRAMS**

## Undergraduate Degree and Certificate Programs - Fall 2014

### College of Arts and sciences

BA American Studies  
 BA Anthropology  
 BA Biology  
 BA Communication Studies  
 BA English: Literature  
 BA English: Writings  
 BA History  
 BA Languages & Cultures: French  
 BA Languages & Cultures: German  
 BA Languages & Cultures: Russian  
 BA Languages & Cultures: Spanish  
 BA Latin  
 BA Liberal Studies: Arts and Sciences  
 BA Liberal Studies: Career Preparation  
 BA Literature  
 BA Mathematics  
 BA Philosophy  
 BA Philosophy:Religious Studies  
 BA Psychology  
 BA Sociology  
 BA Women's and Gender Studies  
 BS Biochemistry  
 BS Biology  
 BS Biology: Cell and Molecular  
 BS Biology: Ecology and Conservation  
 BS Biology: Marine Science  
 BS Biology: Medical Technology  
 BS Biology: Microbiology  
 BS Chemistry  
 BS Chemistry-Biology  
 BS Computer Science  
 BS Forensic & Toxicological Chemistry  
 BS Geoscience - Geology  
 BS Geoscience : Earth Systems  
 BS Liberal Studies: Pharmaceutical Product Dev  
 BS Liberal Studies: Professional Studies Track  
 BS Liberal Studies: Science-Math

### College of Arts and Sciences (cont.)

BS Mathematics: Actuarial Science  
 BS Mathematics: Computational Mathematics  
 BS Mathematics: Industrial Mathematics  
 BS Mathematics: Mathematical Finance  
 BS Mathematics: Pure Mathematics  
 BS Mathematics: Statistics  
 BS Physics  
 BS Physics-Engineering  
 BSED Biology  
 BSED Chemistry  
 BSED Earth-Space Science  
 BSED Earth-Space Science : Geology  
 BSED English: Literature  
 BSED English: Writings  
 BSED Mathematics  
 BSED Physics  
 Certificate Computer Security  
 Certificate TESL  
 TC Biology  
 TC Chemistry  
 TC Communications  
 TC Earth-Space Science  
 TC English  
 TC French  
 TC General Science  
 TC German  
 TC Latin  
 TC Mathematics  
 TC Physics  
 TC Russian  
 TC Social Studies - History  
 TC Spanish

### College of Business and Public affairs

BA Geography  
 BA Geography: Environmental  
 BA Geography:Geographic Information Systems  
 BA Geography:Urban/Regional Planning  
 BA Political Science  
 BA Political Science: International Relations  
 BA Political Science:Applied Public Policy  
 BS Accounting  
 BS Business Management  
 BS Criminal Justice  
 BS Criminal Justice (Philadelphia)  
 BS Economics  
 BS Finance  
 BS Marketing  
 BS Pre-Business Accounting  
 BS Pre-Business: Eco-Finance  
 BS Pre-Business: Management  
 BS Pre-Business: Marketing  
 BSW Social Work  
 BSW Social Work (Philadelphia)

### College of Education

BSED Early Childhood Education  
 BSED Early Grades Prep, PK-4 Education  
 BSED Elementary Education  
 BSED Middle Grades Prep, 4-8 Education  
 BSED Special Education  
 BSED Special Education: 7-12  
 BSED Special Education: PK-8  
 TC Early Childhood Education  
 TC Elementary Education  
 TC Post-Baccalaureate Grades 4-8  
 TC Post-Baccalaureate PK-4  
 Certificate Education for Sustainability

## Undergraduate Degree and Certificate Programs - Fall 2014 (continued)

### College of Health

BA Communicative Disorders  
 BS Athletic Training  
 BS Exercise Science  
 BS Exercise Science: Pre-Chiropractic  
 BS Exercise Science: Pre-Occupational Therapy  
 BS Exercise Science: Pre-Physical Therapy  
 BS Health and Physical Education  
 BS Health Science: General  
 BS Health Science: Respiratory Care  
 BS Nutrition and Dietetics  
 BS Public Health: Environmental  
 BS Public Health: Health Promotion  
 BSN Nursing  
 BSN Nursing: 2nd Degree  
 BSN Nursing: RN  
 BSN Nursing: RN (Philadelphia)  
 TC Health & Physical Educ  
 TC Speech Correction  
 Pre-Grad Program Certificate  
 Certificate Athletic Training

### College of Visual and Performing Arts

BA Studio Arts  
 BA Theatre  
 BA Theatre and Dance: Dance  
 BA Theatre: Design, Technology, Management  
 BA Theatre: Musical Theatre  
 BA Theatre: Performance  
 BFA Studio Arts  
 BM Music Education: Instrument  
 BM Music Education: Keyboard  
 BM Music Education: Voice  
 BM Music: Elective Studies  
 BM Music: History  
 BM Music: Performance - Instrument  
 BM Music: Performance - Jazz  
 BM Music: Performance - Keyboard  
 BM Music: Performance - Voice  
 BM Music: Theory & Composition  
 TC Music Education

### Educational Services

Certificate Leadership and Civic Engagement

Note : TC is recommended for Teacher Certification.

## Graduate Degree and Certificate Programs - Fall 2014

### College of Arts and Sciences

MA Communication Studies  
 MA English  
 MA English - Non-Thesis Option  
 MA French  
 MA Geoscience  
 MA History  
 MA Holocaust and Genocide Studies  
 MA Languages & Cultures in French  
 MA Languages & Cultures in German  
 MA Languages & Cultures in Spanish  
 MA Mathematics  
 MA Philosophy: Applied Ethics  
 MA Philosophy: General  
 MA Psychology - General  
 MA Psychology - Clinical  
 MA Psychology - Industrial/Organizational  
 MA Spanish  
 MA TESL  
 MED French  
 MED German  
 MED History  
 MED Spanish  
 MS Applied Statistics  
 MS Biology  
 MS Biology : Thesis  
 MS Computer Science  
 MSA Leadership for Women  
 MSA Long-Term Care  
 MPA Leadership for Women  
 MPA Long-Term Care  
 TC Biology  
 TC Chemistry  
 TC Earth-Space Science  
 TC English  
 TC French  
 TC General Science  
 TC German

### College of Arts and Sciences

TC Latin  
 TC Mathematics  
 TC Physics  
 Certificate Applied Statistics  
 Certificate Gerontology  
 Certificate Holocaust and Genocide Studies  
 Certificate Business Ethics  
 Certificate Computer Security  
 Certificate Healthcare Ethics  
 Certificate Information Systems  
 Certificate Leadership for Women  
 Certificate TESL  
 Graduate Certificate Web Technology  
 Letter of Completion: Clinical Mental Health  
 TC Social Studies - History  
 TC Spanish

### College of Business and Public Affairs

MA Geography  
 MBA Economics-Finance  
 MBA Executive  
 MBA General  
 MBA Management  
 MBA Technology - Electronic Commerce  
 MPA Human Resource Management  
 MPA Individualized Program  
 MPA Nonprofit Administration  
 MPA Public Administration  
 MPA Regional Planning  
 MPA Training and Development  
 MS Criminal Justice  
 MS Criminal Justice (Philadelphia)  
 MSA Human Resource Management  
 MSA Public Administration  
 MSA Training and Development

### College of Business and Public Affairs

MSW Social Work  
 MSW Social Work (Philadelphia)  
 MSW Social Work Advanced Standing  
 Certificate Business  
 Certificate Business (Philadelphia)  
 Certificate Human Resource Management  
 Certificate Administration  
 Certificate Geographic Information Systems  
 Certificate Non Profit Administration  
 Certificate Urban and Regional Planning

### College of Education

MED Applied Studies in Teaching and Learning  
 MED Applied Studies in Teaching and Learning (Philadelphia)  
 MED Counseling - Elementary  
 MED Counseling - School  
 MED Counseling - Secondary  
 MED Early Childhood Education  
 MED Reading  
 MED Reading (Philadelphia)  
 MED Secondary Education  
 MED Special Education  
 MED Special Education (online)  
 MED Special Education (Philadelphia)  
 MS - Higher Education Counseling/Student Affairs  
 TC Counseling  
 TC Early Childhood Education  
 TC Early Grades Preparation  
 TC Elementary Education  
 TC Middle Grades Preparation  
 TC Reading  
 TC Reading (Philadelphia)  
 TC Secondary Education  
 TC Special Education: 7-12  
 TC Special Education 7-12 (Philadelphia)

## Graduate Degree and Certificate Programs - Fall 2014 (continued)

### College of Education

TC Special Education 7-12 (Online)  
 TC Special Education: K-12  
 TC Special Education: PK-8  
 TC Special Education: PK-8 (Philadelphia)  
 TC Special Education: PK-8 (Online)  
 Certificate Autism  
 Certificate Education for Sustainability  
 Certificate Educational Technology  
 Certificate Entrepreneurial Education  
 Certificate Literacy Coaching  
 Certificate Universal Design for Learning and Assistive Technology  
 Certificate Literacy  
 Certificate Special Education  
 Certificate Higher Ed Counseling/Student Affairs  
 Letter of Completion: Professional Counseling  
 Licensure Prep

### College of Health

Doctorate of Nursing Practice  
 MA Communicative Disorders  
 MED Health - School Health  
 MS Exercise and Sport Physiology  
 MS Exercise and Sport Physiology: Athletic Training  
 MS Health and Physical Education - Sport/Exercise Physiology  
 MS Physical Education

Note : TC is recommended for Teacher Certification

### College of Health

MSA Sport and Athletic Administration  
 MSN Nursing  
 MSN Nursing: Advanced Practice-Adult Gerontology  
 MSN Public Health Nursing: Administration  
 MSN Public Health Nursing: Education  
 MSN Public Health Nursing: Integrative Health  
 MPA Sport Management and Athletics  
 MPH Public Health: Community Health  
 MPH Public Health: Integrative Health  
 MPH Public Health: Management  
 MPH: Environmental Health  
 MPH: Health Administration  
 MPH: Nutrition  
 TC Health & Physical Education  
 TC School Nursing  
 TC Speech Correction  
 Certificate Adapted Physical Education  
 Certificate Emergency Preparedness-Health  
 Certificate Health Care Administration  
 Certificate Health: Integrative Health  
 Certificate School Nursing  
 Certificate Sports Management and Athletics

### College of Visual and Performing Arts

MA Music History  
 MM Composition  
 MM Music Education: Performance  
 MM Music Education: Research  
 MM Music Education: Technology  
 MM Music Performance  
 MM Music: History and Literature  
 MM Music: Piano Pedagogy  
 MM Music: Theory & Composition  
 TC Music Education  
 Certificate Kodaly Methodology  
 Certificate Music Technology  
 Certificate Orff-Schulwerk  
 Certificate Piano Pedagogy



## Professional and Program Accreditations

West Chester University is accredited by  
The Middle States Commission on Higher Education (MSCHE)

Accreditation Board for Engineering and Technology (ABET)

Accreditation Council for continuing Medical Education (ACCME)

American Chemical Society (ACS)

American Council on the Teaching of Foreign Languages (ACTFL) - Recognized Programs

American Dietetic Association, Commission on Accreditation for Dietetics Educations (CADE)

American Orff Schulwerk Association (AOSA)

American Speech-Language-Hearing Association (ASHA)

Association to Advance Collegiate Schools of Business (AACSB)

Association for Childhood Education International (ACEI) - Recognized Programs

Commission on Accreditation of Allied Health Education Programs (CAAHEP)

Commission on Accreditation of Athletic Training Education (CAATE)

Commission on Collegiate Nursing Education (CCNE)

Committee on Accreditation for Respiratory Care (CoARC)

Council on Education for Public Health (CEPH)

Council for Exceptional Children (CEC) - Recognized Programs

Council on Social Work Education (CSWE)

## Professional and Program Accreditations (Continued)

Council for Accreditation of Counseling and Related Educational Programs (CACREP)  
Forensic Science Education Programs Accreditation Commission (FEPAC)  
International Reading Association (IRA)  
National Association of Schools of Music (NASM)  
National Association for Sport and Physical Education (NASPE) - Recognized Programs  
National Association for the Education of Young Children (NAEYC) - Recognized Programs  
National Association of Schools of Art and Design (NASAD)  
National Association of Schools of Theatre (NAST)  
National Council for the Accreditation of Teacher Education (NCATE)  
National Council for the Social Studies (NCSS) - Recognized Programs  
National Council of Teachers for Mathematics (NCTM) - Recognized Programs  
National Council of Teachers of English (NCTE) - Recognized Programs  
National Science Teachers Association (NSTA) - Recognized Programs  
National Environmental Health Science and Protection Accreditation Council (EHAC)  
Organization of American Kodaly Educators (OAKE)  
Pennsylvania Department of Education (PDE)



## DEGREES CONFERRED

The following counts include only Baccalaureate (Primary and Secondary Major) and Master's degrees.

Academic Plan	Degree Year				
	2009-10	2010-11	2011-2012	2012-13	2013-14
<b>College of Arts and Sciences</b>					
<b>Anthropology and Sociology</b>					
Undergraduate					
Anthropology BA	12	11	8	20	12
Sociology BA	24	23	35	51	59
<b>Total Undergraduate</b>	<b>36</b>	<b>34</b>	<b>43</b>	<b>71</b>	<b>71</b>
Graduate					
Long-Term Health Care MSA	0	1	1	1	0
<b>Total Graduate</b>	<b>0</b>	<b>1</b>	<b>1</b>	<b>1</b>	<b>0</b>
<b>Department Totals</b>	<b>36</b>	<b>35</b>	<b>44</b>	<b>72</b>	<b>71</b>
<b>Biology</b>					
Undergraduate					
Biology BA	1	1	3	0	1
Biology BSED	6	9	7	7	8
Biology BS	28	36	39	42	23
Biology: Microbiology BS	6	4	3	10	11
Biology: Ecology BS	3	4	9	9	9
Biology: Medical Technology BS	1	3	2	3	2
Biology: Cell & Molecular BS	4	20	22	13	21
<b>Total Undergraduate</b>	<b>49</b>	<b>77</b>	<b>85</b>	<b>84</b>	<b>75</b>

Academic Plan	Degree Year				
	2009-10	2010-11	2011-2012	2012-13	2013-14
<b>Biology</b>					
Graduate					
Biology MS	3	3	2	8	6
Biology - Thesis MS	3	3	5	7	4
Total Graduate	6	6	7	15	10
Department Totals	83	91	91	15	85
<b>Chemistry</b>					
Undergraduate					
Chemistry BSED	2	1	0	4	1
Chemistry-Biology * BS	5	9	13	13	12
Chemistry BS	7	2	4	12	12
Biochemistry BS	1	2	6	9	4
Foreign & Toxicology Chemistry BS	10	6	7	11	11
Total Undergraduate	25	20	30	49	40
Department Totals	25	20	30	49	40
<b>Communications Studies</b>					
Undergraduate					
Communication Studies BA	123	142	119	160	139
Communication-Com/Med BSED	0	0	-	-	-
Total Undergraduate	123	142	119	160	139
Graduate					
Communication Studies MA	7	18	7	11	9
Total Graduate	7	18	7	11	9
Department Totals	130	160	126	171	148

Academic Plan	Degree Year				
	2009-10	2010-11	2011-2012	2012-13	2013-14
<b>Computer Science</b>					
Undergraduate					
Computer Science BS	33	27	17	23	45
<b>Total Undergraduate</b>	<b>33</b>	<b>27</b>	<b>17</b>	<b>23</b>	<b>45</b>
Graduate					
Computer Science MS	11	7	7	5	6
<b>Total Graduate</b>	<b>11</b>	<b>7</b>	<b>7</b>	<b>5</b>	<b>6</b>
<b>Department Totals</b>	<b>44</b>	<b>34</b>	<b>24</b>	<b>28</b>	<b>51</b>
<b>English</b>					
Undergraduate					
Literature BA	0	0	0	0	0
English BA: Literature	46	37	25	24	30
English BA: Writings	12	36	36	43	47
English BSED: Literature	33	27	22	30	36
English BSED: Writings	2	11	8	10	18
<b>Total Undergraduate</b>	<b>93</b>	<b>111</b>	<b>91</b>	<b>107</b>	<b>131</b>
Graduate					
English MA	24	12	28	24	38
TESL MA	7	13	10	10	7
English - Non-Thesis Option MA	0	0	0	0	0
<b>Total Graduate</b>	<b>31</b>	<b>25</b>	<b>38</b>	<b>34</b>	<b>45</b>
<b>Department Totals</b>	<b>124</b>	<b>136</b>	<b>129</b>	<b>141</b>	<b>176</b>

Academic Plan	Degree Year				
	2009-10	2010-11	2011-2012	2012-13	2013-14
<b>Geology &amp; Astronomy</b>					
Undergraduate					
Earth-Space Science BSED	2	7	5	7	4
Earth-Space Science - Geology BSED	0	0	0	0	0
Geoscience - Earth Systems BS	5	1	14	13	11
Geoscience: Geology BS	6	3	9	4	8
Geoscience: Environ Geoscience BS	0	0	0	0	0
<b>Total Undergraduate</b>	<b>13</b>	<b>11</b>	<b>28</b>	<b>24</b>	<b>23</b>
Graduate					
Geoscience MA	7	11	8	6	11
<b>Total Graduate</b>	<b>7</b>	<b>11</b>	<b>8</b>	<b>6</b>	<b>11</b>
<b>Department Totals</b>	<b>20</b>	<b>22</b>	<b>36</b>	<b>30</b>	<b>34</b>
<b>Foreign Language</b>					
Undergraduate					
French BA	5	8	6	9	8
German BA	2	5	2	10	3
Latin BA	1	2	0	1	2
Russian BA	2	1	4	6	3
Spanish BA	28	12	21	28	22
French BSED	0	0	0	0	0
German BSED	0	0	0	0	0
Spanish BSED	0	0	0	0	0
<b>Total Undergraduate</b>	<b>38</b>	<b>28</b>	<b>33</b>	<b>54</b>	<b>38</b>

Academic Plan	Degree Year				
	2009-10	2010-11	2011-2012	2012-13	2013-14
<b>Foreign Language (continued)</b>					
Graduate					
French MA	2	7	6	5	3
Spanish MA	3	2	3	0	3
French MED	1	0	1	2	2
Spanish MED	0	2	2	1	1
Total Graduate	6	11	12	8	9
Department Totals	34	44	66	8	47
<b>History</b>					
Undergraduate					
American Studies BA	0	1	4	1	1
History BA	84	87	107	101	94
Total Undergraduate	84	88	111	102	95
Graduate					
History MA	10	11	6	2	9
Holocaust & Genocide Studies MA	6	7	4	2	8
History MED	2	2	0	0	0
Total Graduate	18	20	10	4	17
Department Totals	102	108	121	106	112
<b>Liberal Studies</b>					
Undergraduate					
Liberal Studies: Arts & Science BA	24	29	35	45	22
Liberal Studies: Career Pre BA	2	1	0	0	0



Academic Plan	Degree Year				
	2009-10	2010-11	2011-2012	2012-13	2013-14
<b>Liberal Studies (continued)</b>					
Undergraduate					
Pharmaceutical Product Dev BS	10	15	7	14	11
Liberal Studies: Science /Math BS	8	10	9	12	6
Liberal Studies: Profession BS	160	202	221	206	240
<b>Total Undergraduate</b>	<b>208</b>	<b>262</b>	<b>282</b>	<b>232</b>	<b>279</b>
<b>Department Totals</b>	<b>204</b>	<b>257</b>	<b>272</b>	<b>277</b>	<b>279</b>
<b>Mathematics</b>					
Undergraduate					
Mathematics BA	5	2	3	8	4
Mathematics: Actuarial Science BS	-	-	4	3	15
Mathematics-Computer Science BA	0	0	0	0	0
Mathematics : Finance BS	13	6	2	2	6
Mathematics BSED	14	17	18	14	24
Mathematics: Industrial BS	-	1	2	2	1
Mathematics: Computational BS	-	1	0	4	1
Mathematics: Pure Mathematics	-	-	-	-	1
Mathematics: Statistics BS	-	2	3	13	5
<b>Total Undergraduate</b>	<b>32</b>	<b>29</b>	<b>32</b>	<b>46</b>	<b>57</b>
Graduate					
Mathematics MA	7	5	10	5	14
Applied Statistics MS	24	24	15	24	22
<b>Total Graduate</b>	<b>31</b>	<b>29</b>	<b>25</b>	<b>29</b>	<b>36</b>
<b>Department Totals</b>	<b>63</b>	<b>58</b>	<b>57</b>	<b>75</b>	<b>93</b>

Academic Plan	Degree Year				
	2009-10	2010-11	2011-2012	2012-13	2013-14
<b>Philosophy</b>					
Undergraduate					
Philosophy BA	11	10	10	14	20
Philosophy-Religious Studies BA	3	1	4	2	2
<b>Total Undergraduate</b>	<b>14</b>	<b>11</b>	<b>14</b>	<b>16</b>	<b>22</b>
Graduate					
Philosophy MA: Applied Ethics	1	1	0	0	1
Philosophy MA: General	4	7	3	5	6
<b>Total Graduate</b>	<b>5</b>	<b>8</b>	<b>3</b>	<b>5</b>	<b>7</b>
<b>Department Totals</b>	<b>19</b>	<b>19</b>	<b>17</b>	<b>21</b>	<b>29</b>
<b>Physics</b>					
Undergraduate					
Physics BSED	1	2	2	2	1
Physics BS	5	1	8	8	5
Physics-Engineering BS	1	2	2	1	3
<b>Total Undergraduate</b>	<b>7</b>	<b>5</b>	<b>12</b>	<b>11</b>	<b>9</b>
<b>Department Totals</b>	<b>7</b>	<b>5</b>	<b>12</b>	<b>11</b>	<b>9</b>
<b>Psychology</b>					
Undergraduate					
Psychology BA	126	151	157	186	212
<b>Total Undergraduate</b>	<b>126</b>	<b>151</b>	<b>157</b>	<b>186</b>	<b>212</b>

Academic Plan	Degree Year				
	2009-10	2010-11	2011-2012	2012-13	2013-14
<b>Psychology (continued)</b>					
Graduate					
Psychology: Clinical MA	32	18	15	24	16
Psychology: General MA	1	1	2	4	1
Psychology: Industrial MA	12	10	11	11	20
Total Graduate	45	29	28	39	37
Department Totals	171	180	185	225	249
<b>Women's Studies</b>					
Undergraduate					
Women's Studies BA	4	10	11	7	12
Total Undergraduate	4	10	11	7	12
Graduate					
Leadership for Women MSA	0	0	0	0	0
Leadership for Women MPA	0	0	0	0	0
Total Graduate	0	0	0	0	0
Department Totals	4	10	11	7	12
<i>College of Arts and Sciences Undergraduate Totals</i>	881	1001	1055	1217	1248
<i>College of Arts and Sciences Graduate Totals</i>	167	165	146	157	187
<i>College of Arts and Sciences Totals</i>	1048	1166	1208	1374	1435
<b>College of Business and Public Affairs</b>					
<b>Accounting</b>					
Undergraduate					
Accounting BS	107	99	77	75	95
Total Undergraduate	107	99	77	75	95
Department Totals	107	99	77	75	95

Academic Plan	Degree Year				
	2009-10	2010-11	2011-2012	2012-13	2013-14
<b><i>Criminal Justice</i></b>					
Undergraduate					
Criminal Justice BS	110	87	84	108	103
<b>Total Undergraduate</b>	<b>110</b>	<b>87</b>	<b>84</b>	<b>108</b>	<b>103</b>
Graduate					
Criminal Justice - Thesis MS	0	0	0	0	0
Criminal Justice MS	19	25	20	18	16
<b>Total Graduate</b>	<b>19</b>	<b>25</b>	<b>20</b>	<b>18</b>	<b>16</b>
<b>Department Totals</b>	<b>129</b>	<b>112</b>	<b>104</b>	<b>126</b>	<b>119</b>
<b><i>Economics and Finance</i></b>					
Undergraduate					
Economics BS	10	13	27	36	36
Finance BS	74	88	94	119	128
<b>Total Undergraduate</b>	<b>84</b>	<b>101</b>	<b>121</b>	<b>155</b>	<b>164</b>
Graduate					
Bus Admin: Economics-Finance MBA	5	0	0	0	0
<b>Total Graduate</b>	<b>5</b>	<b>0</b>	<b>0</b>	<b>0</b>	<b>0</b>
<b>Department Totals</b>	<b>89</b>	<b>101</b>	<b>121</b>	<b>155</b>	<b>164</b>
<b><i>Geography</i></b>					
Undergraduate					
Geography BA	9	4	4	7	2
Geography: Environmental BA	-	2	3	4	3
Geography-Urban/Regional PI BA	5	3	5	2	6

Academic Plan	Degree Year				
	2009-10	2010-11	2011-2012	2012-13	2013-14
<b>Geography (continued)</b>					
Undergraduate					
Geography-Geographic Analyses BA	2	1	4	4	8
<b>Total Undergraduate</b>	<b>16</b>	<b>10</b>	<b>16</b>	<b>17</b>	<b>19</b>
Graduate					
Geography MA	8	6	14	9	12
Regional Planning MPA	-	-	-	1	0
Regional Planning MSA	0	2	0	-	-
<b>Total Graduate</b>	<b>8</b>	<b>8</b>	<b>14</b>	<b>10</b>	<b>12</b>
<b>Department Totals</b>	<b>24</b>	<b>18</b>	<b>30</b>	<b>27</b>	<b>31</b>
<b>Political Science</b>					
Undergraduate					
Political Science-Applied Pub Policy BA	1	11	7	10	4
Political Science - Int'l Relations BA	19	25	16	15	23
Political Science BA	36	35	33	37	61
<b>Total Undergraduate</b>	<b>56</b>	<b>71</b>	<b>56</b>	<b>62</b>	<b>88</b>
Graduate					
Individualized Program MSA	1	0	0	-	-
Human Resource Mgmt. MSA	10	2	1	1	0
Public Administration MSA	4	0	0	-	-
Training & Developmental MSA	2	1	0	-	-
Nonprofit Administration MSA	5	0	1	-	-

Academic Plan	Degree Year				
	2009-10	2010-11	2011-2012	2012-13	2013-14
<b><i>Political Science (continued)</i></b>					
Graduate					
Individualized Program MPA	-	1	0	-	-
Human Resource Mgmt. MPA	-	8	4	1	0
Public Administration MPA	-	13	25	19	0
Training & Development MPA	-	1	0	-	-
Nonprofit Administration MPA	-	3	2	1	0
Total Graduate	22	29	33	22	0
Department Totals	78	100	89	84	88
<b><i>Public Policy and Administration</i></b>					
Graduate					
Human Resource Mgmt MPA	-	-	-	6	9
Human Resource Mgmt MSA	-	-	-	1	0
Nonprofit Administration MPA	-	-	-	2	4
Public Administration MPA	-	-	-	19	40
Public Administration MSA	-	-	-	0	0
Individualized Program MPA	-	-	-	0	0
Training & Development	-	-	-	0	0
Training & Development MSA	-	-	-	1	0
Total Graduate	-	-	-	29	53
Department Totals	-	-	-	29	53

Academic Plan	Degree Year				
	2009-10	2010-11	2011-2012	2012-13	2013-14
<b>Management</b>					
Undergraduate					
Business Management BS	124	132	135	133	152
<b>Total Undergraduate</b>	<b>124</b>	<b>132</b>	<b>135</b>	<b>133</b>	<b>152</b>
Graduate					
Bus Admin: General MBA	28	24	28	24	22
Bus Admin: Management MBA	1	1	0	0	0
Bus Admin: Executive MBA	1	0	0	0	0
<b>Total Graduate</b>	<b>30</b>	<b>25</b>	<b>28</b>	<b>24</b>	<b>22</b>
<b>Department Totals</b>	<b>154</b>	<b>157</b>	<b>163</b>	<b>157</b>	<b>174</b>
<b>Marketing</b>					
Undergraduate					
Marketing BS	98	98	100	118	130
<b>Total Undergraduate</b>	<b>98</b>	<b>98</b>	<b>100</b>	<b>118</b>	<b>130</b>
Graduate					
Bus Admin: Tech-Electronic MBA	1	1	0	0	0
<b>Total Graduate</b>	<b>1</b>	<b>1</b>	<b>0</b>	<b>0</b>	<b>0</b>
<b>Department Totals</b>	<b>99</b>	<b>99</b>	<b>100</b>	<b>118</b>	<b>130</b>
<b>Social Work</b>					
Undergraduate					
Social Work BSW	33	35	42	56	47
<b>Total Undergraduate</b>	<b>33</b>	<b>35</b>	<b>42</b>	<b>56</b>	<b>47</b>

Academic Plan	Degree Year				
	2009-10	2010-11	2011-2012	2012-13	2013-14
<b>Social Work</b>					
Graduate					
Social Work MSW	29	34	38	53	54
Total Graduate	29	34	38	53	54
Department Totals	62	69	80	109	101
<b>College of Business and Public Affairs Undergraduate Totals</b>					
	628	633	631	724	798
<b>College of Business and Public Affairs Graduate Totals</b>					
	114	122	133	156	157
<b>College of Business and Public Affairs Totals</b>					
	742	755	764	880	955
<b>College of Education</b>					
<b>Counseling and Educational Psychology</b>					
Graduate					
Counseling: Elementary MED	16	15	24	19	49
Counseling: Secondary MED	32	44	43	40	49
Counseling: Higher Ed/Stu Affairs MS	18	14	18	24	36
Total Graduate	66	73	85	83	134
Department Totals	66	73	85	83	134
<b>Early Childhood and Special Education</b>					
Undergraduate					
Early Childhood Education BSED	79	51	3	-	-
Special Education BSED	114	83	99	28	0
Special Education : 7-12 BSED	-	-	-	1	7
Special Education: PK-8 BSED	-	-	-	33	87
Total Undergraduate	193	134	102	62	94



Academic Plan	Degree Year				
	2009-10	2010-11	2011-2012	2012-13	2013-14
<b>Early Childhood and Special Education (continued)</b>					
Early Childhood Education MED	-	-	-	-	-
Special Education MED	-	-	-	-	17
Special Education MED (online)	-	-	-	-	7
Total Graduate	23	32	23	30	24
Department Totals	216	166	125	92	118
<b>Early and Middle Grades Education</b>					
Undergraduate					
Early Childhood Education BSED	-	-	55	12	0
Early Grades Prep, PK-4 BSED	-	-	-	146	225
Elementary Education BSED	283	290	300	35	1
Middle Grades Prep, 4-8 BSED	-	-	-	26	82
Total Undergraduate	283	290	355	219	308
Graduate					
Applied Studies in Teaching and Learning MED	35	34	12	16	11
Early Childhood Education MED	22	23	21	1	17
Total Graduate	57	57	33	17	28
Department Totals	341	347	388	236	336
<b>Literacy</b>					
Graduate					
Reading MED	54	49	67	67	45
Total Graduate	54	49	67	67	45
Department Totals	54	49	67	67	45

Academic Plan	Degree Year				
	2009-10	2010-11	2011-2012	2012-13	2013-14
<b>Professional and Secondary Education</b>					
Graduate					
Secondary Education MED	11	13	14	15	9
Total Graduate	11	13	14	15	9
Department Totals	11	13	14	15	9
<i>College of Education Undergraduate Totals</i>	477	424	457	281	402
<i>College of Education Graduate Totals</i>	211	224	222	212	240
<i>College of Education Totals</i>	688	648	679	493	642
<b>College of Health Sciences</b>					
Health					
Undergraduate					
Public Health: Health Promotion BS	16	17	29	22	38
Public Health: Environmental BS	8	6	13	7	8
Nutrition and Dietetics BS	58	61	6	-	-
Health Science: General BS	11	14	11	17	14
Health Science: Respiratory Care BS	22	24	22	27	22
Total Undergraduate	115	122	81	73	82
Graduate					
Health: School Health MED	10	27	10	12	9
Public Health MPH: Community	29	23	32	40	36
Public Health MPH: Integrative	8	4	4	9	2

Academic Plan	Degree Year				
	2009-10	2010-11	2011-2012	2012-13	2013-14
<b>Health (continued)</b>					
Graduate					
Public Health MPH: Administrative	4	5	13	12	1
Public Health MPH: Environment	6	4	5	6	2
Public Health MPH: Nutrition	-	-	2	-	-
Public Health MPH: Management	-	-	-	8	14
Total Graduate	57	63	66	87	64
Department Totals	172	187	147	160	146
<b>Kinesiology</b>					
Undergraduate					
Health & Physical Education BS	90	86	88	80	60
Pre-Physical Therapy BS	3	14	16	34	55
Pre-Chiropractic BS	-	1	0	0	3
Pre-Occupational Therapy BS	-	1	5	14	26
Exercise Science Specialist BS	47	42	44	37	44
Total Undergraduate	140	144	153	165	188
Graduate					
Hlth & Phys Ed: Exercise Phys MS	8	6	7	10	3
Sport & Athletic Admin MPA	14	0	0	1	0
Sport Mgt & Athletics MPA	-	11	1	1	0

Academic Plan	Degree Year				
	2009-10	2010-11	2011-2012	2012-13	2013-14
<b><i>Kinesiology (continued)</i></b>					
Graduate					
MS in Physical Education	0	0	0	1	1
MS in Ex Sport Phys: Athl Trng	-	-	-	2	6
MS in Exercise/Sport Physiology	-	-	-	2	4
Total Graduate	22	17	9	17	14
Department Totals	162	161	159	182	202
<b><i>Nursing</i></b>					
Undergraduate					
Nursing BSN	61	97	108	74	57
Nursing BSN: 2nd degree	-	-	-	1	26
RN to BSN	40	51	71	84	63
Total Undergraduate	101	148	179	159	146
Graduate					
Nursing - Education MSN	2	0	10	17	
Nursing MSN	5	14	1	0	6
Public Health Nursing MSN: Admin	-	-	-	-	2
Public Health Nursing MSN: Integ	-	-	-	-	1
Total Graduate	7	14	11	17	9
Department Totals	108	162	190	176	155
<b><i>Sports Medicine</i></b>					
Undergraduate					
Athletic Training BS	30	24	35	32	41
Total Undergraduate	30	24	35	32	41
Department Totals	30	24	35	32	41

Academic Plan	Degree Year				
	2009-10	2010-11	2011-2012	2012-13	2013-14
<b>Nutrition</b>					
Undergraduate					
Nutrition and Dietics BS	-	-	79	103	115
<b>Total Undergraduate</b>	-	-	79	103	115
Graduate					
Public Health MPH: Nutrition	-	-	-	14	16
<b>Total Graduate</b>	-	-	-	14	16
<b>Department Totals</b>	-	-	79	117	131
<b>Communicative Disorders</b>					
Undergraduate					
Communicative Disorders BA	40	51	41	59	75
<b>Total Undergraduate</b>	40	51	41	59	75
Graduate					
Communicative Disorders MA	25	31	32	28	27
<b>Total Graduate</b>	25	31	32	28	27
<b>Department Totals</b>	65	82	73	87	102
<b>College of Health Sciences Undergraduate Totals</b>					
	426	489	568	591	647
<b>College of Health Sciences Graduate Totals</b>					
	111	128	117	163	130
<b>College of Health Sciences Totals</b>					
	537	619	685	754	777
<b>College of Visual and Performing Arts</b>					
<b>Applied Music</b>					
Undergraduate					
Music: Performance Instrument	5	10	13	13	10
Music: Performance Jazz BM	1	1	3	2	1

Academic Plan	Degree Year				
	2009-10	2010-11	2011-2012	2012-13	2013-14
<b>Applied Music (continued)</b>					
Undergraduate					
Music: Performance Voice BM	5	2	4	7	5
Music: Performance Keyboard BM	3	2	1	2	5
<b>Total Undergraduate</b>	<b>14</b>	<b>15</b>	<b>21</b>	<b>24</b>	<b>21</b>
Graduate					
Music: Piano Pedagogy MM	1	1	4	0	1
Music Performance MM	6	11	10	8	15
<b>Total Graduate</b>	<b>7</b>	<b>12</b>	<b>14</b>	<b>8</b>	<b>16</b>
<b>Department Totals</b>	<b>21</b>	<b>27</b>	<b>35</b>	<b>32</b>	<b>37</b>
<b>Art</b>					
Undergraduate					
Studio Arts BA	4	2	0	1	1
Studio Arts BFA	38	41	35	47	48
<b>Total Undergraduate</b>	<b>42</b>	<b>43</b>	<b>35</b>	<b>48</b>	<b>49</b>
<b>Department Totals</b>	<b>42</b>	<b>43</b>	<b>35</b>	<b>48</b>	<b>49</b>
<b>Music History</b>					
Graduate					
Music History MA	1	1	0	-	-
<b>Total Graduate</b>	<b>1</b>	<b>1</b>	<b>0</b>	<b>-</b>	<b>-</b>
<b>Department Totals</b>	<b>1</b>	<b>1</b>	<b>0</b>	<b>-</b>	<b>-</b>

Academic Plan	Degree Year				
	2009-10	2010-11	2011-2012	2012-13	2013-14
<b><i>Music Theory, History and Composition</i></b>					
Undergraduate					
Music: Elective Studies BM	9	5	14	8	5
Music: Theory and Composition BM	3	7	1	7	4
<b>Total Undergraduate</b>	<b>12</b>	<b>12</b>	<b>15</b>	<b>15</b>	<b>9</b>
Graduate					
Music History MA	-	-	-	1	1
Music: Composition MM	1	0	0	0	0
Music: Music Theory MM	0	0	0	0	0
Music: Theory & Composition MM	1	0	0	0	1
<b>Total Graduate</b>	<b>2</b>	<b>0</b>	<b>0</b>	<b>1</b>	<b>2</b>
<b>Department Totals</b>	<b>14</b>	<b>11</b>	<b>15</b>	<b>16</b>	<b>11</b>
<b><i>Music Education</i></b>					
Undergraduate					
Music Education: Instrument BM	30	32	42	29	22
Music Education: Voice BM	24	11	22	15	10
Music Education: Keyboard BM	7	3	5	7	2
<b>Total Undergraduate</b>	<b>61</b>	<b>46</b>	<b>69</b>	<b>51</b>	<b>34</b>
Graduate					
Music Education MM - Performance	15	10	7	14	5

Academic Plan	Degree Year				
	2009-10	2010-11	2011-2012	2012-13	2013-14
<b>Music Education (continued)</b>					
Graduate					
Music Education MM-Technology	3	1	5	2	1
Music Education MM: Research	-	2	1	1	3
Total Graduate	18	13	13	17	9
Department Totals	79	59	82	68	43
<b>Theatre Arts</b>					
Undergraduate					
Theatre Arts: Performance BA	2	3	6	4	8
Theatre Arts: Music Theatre BA	4	10	4	9	7
Theatre Arts: Tech Production BA	5	6	1	3	4
Theatre Arts: General BA	6	8	6	3	4
Theatre Arts: Dance BA	-	-	1	2	1
Total Undergraduate	17	27	18	21	24
Department Totals	17	27	18	21	24
<i>College of Visual and Performing Arts Undergraduate Totals</i>	146	143	158	159	137
<i>College of Visual and Performing Arts Graduate Totals</i>	28	26	27	26	27
<i>College of Visual and Performing Arts Totals</i>	174	169	185	185	164
<i>University Undergraduate Totals</i>	2,558	2,690	2,869	2,972	3,232
<i>University Graduate Totals</i>	631	665	645	714	741
<i>University Totals</i>	3,189	3,357	3,514	3,686	3,973





## TUITION & FEES

## Tuition and Fees by Semester

Tuition Category	2009	2010	2011	2012	2013	2014
<b>Undergraduate Tuition</b>						
Full-Time In-State	\$2,777.00	\$2,902	\$3,120	\$3,214	\$3,311	\$3,410
Full-Time Out-of-State	\$6,943	\$7,255	\$7,800	\$8,035	\$8,278	\$8,525
Per Credit In-State	\$231	\$242	\$260	\$268	\$276	\$284
Per Credit Out-of-State	\$579	\$605	\$650	\$670	\$690	\$710
<b>Undergraduate Fees</b>						
Full-Time In-State	\$726	\$938	\$938.65	\$1,096.05	\$1,114	\$1,161.90
Full-Time Out-of-State		996.85	\$1,027.65	\$1,188.05	\$1,209	\$1,271.90
Per Credit In-State	\$60	\$130	\$157.72	\$91.41	\$92	\$97.24
Per Credit Out-of-State		154.92	\$165.72	\$99.41	\$100	\$106.24
<b>Graduate Tuition</b>						
Full-Time In-State	\$3,333	\$3,483	\$3,744	\$3,861	\$3,978	\$4,086
Full-Time Out-of-State	\$5,333	\$5,573	\$5,616	\$5,796	\$5,967	\$6,129
Per Credit In-State	\$370	\$387	\$416	\$429	\$442	\$454
Per Credit Out-of-State	\$593	\$619	\$624	\$644	\$663	\$681
<b>Graduate Fees</b>						
Full-Time In-State	\$664	\$807	\$892.32	\$1,054.40	\$1,067	\$1,115.25
Full-Time Out-of-State		866.2	982.32	\$1,144.40	\$1,157	\$1,223.25
Per Credit In-State	\$63	\$214	\$100.37	\$105.05	\$106	\$110.78
Per Credit Out-of-State		158.24	110.37	\$115.05	\$116	\$122.78
<b>Residence Halls</b>						
<b>Meal Plan*</b>	\$1,170	\$1,189	\$1,218	\$1,247	\$1,272	\$1,293

\*14 Meals per week + \$250 Flex Dollars



# LIBRARY RESOURCES

## Library Statistics

### FY 2011-2012 through 2013-2014

<b>Holdings</b>	<b>2011-2012</b>	<b>2012-2013</b>	<b>2013-2014</b>	<b>One Year Difference</b>
<b>Library Holdings</b>				
Volumes	759,153	757,875	758,344	<b>469</b>
Microforms	926,451	926,544	926,596	<b>52</b>
E-Books	643,370	654,989	844,919	<b>189,930</b>
Audio/Video units*	199,454	227,395	255,249	<b>27,854</b>
<b>Circulation (General &amp; Reserve)</b>	<b>64,373</b>	<b>57,195</b>	<b>68,218</b>	<b>11,023</b>
<b>Holdings Total</b>	<b>2,528,428</b>	<b>2,566,803</b>	<b>2,905,718</b>	<b>338,915</b>
<b>Total FTE Staff (includes student assistants)</b>	<b>45.92</b>	<b>45.58</b>	<b>49.13</b>	<b>3.55</b>

\*Includes tapes, CDs, DVDs

<b>Other Library Materials</b>	<b>2013-2014</b>
Items Digitized by WCU Library	2,300
Digital Art Images	2,776,861
Digital Pamphlets, Reports, etc.	595,713
Digital Manuscript Pages	6,200,000

For questions /comments or recommendations for other data to include in the Fact Book, please contact Nilima Inamdar, Office of Institutional Research, WCU, 887, Matlack Street, West Chester PA 19381. Email: [ninamdar@wcupa.edu](mailto:ninamdar@wcupa.edu) Phone: 610-436-2456