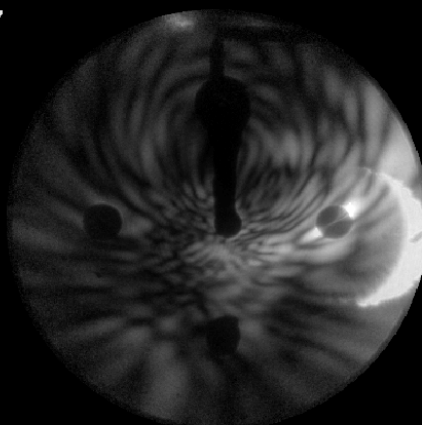


Ambient4\_\_5021  
Scattered Intensity: 6.0e+007

Raw Data

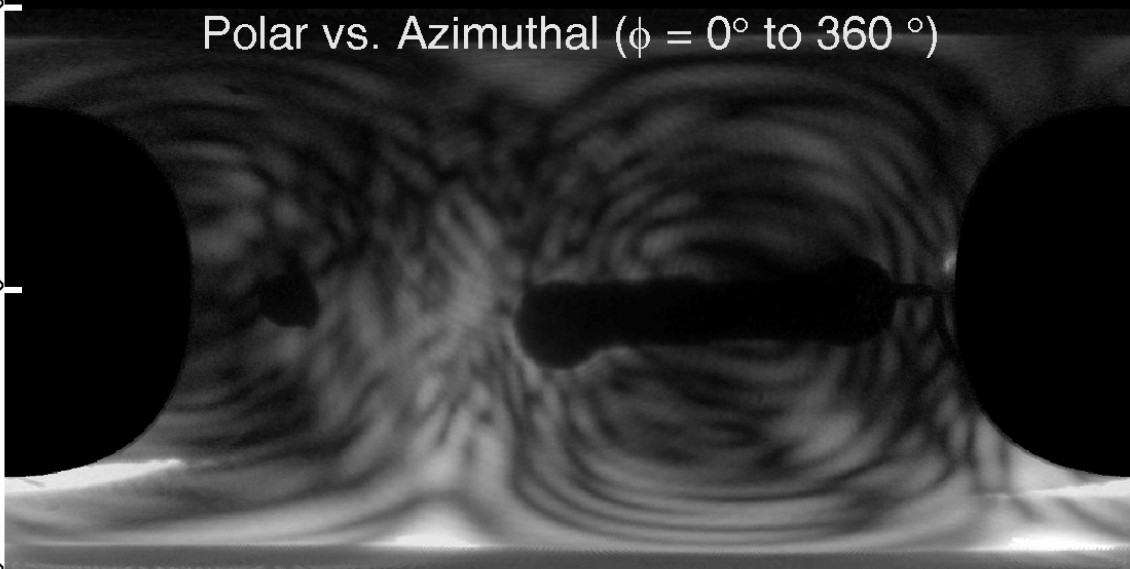


$\theta = 180^\circ$

Polar vs. Azimuthal ( $\phi = 0^\circ$  to  $360^\circ$ )

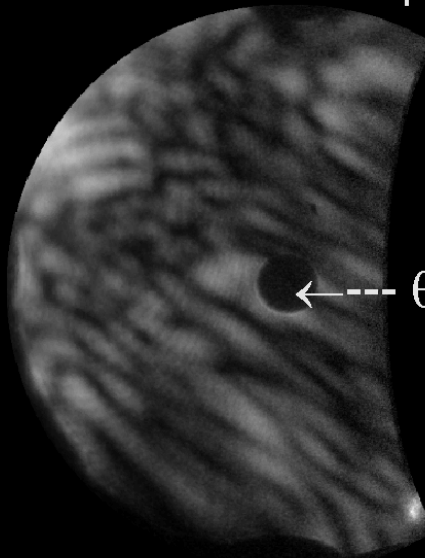
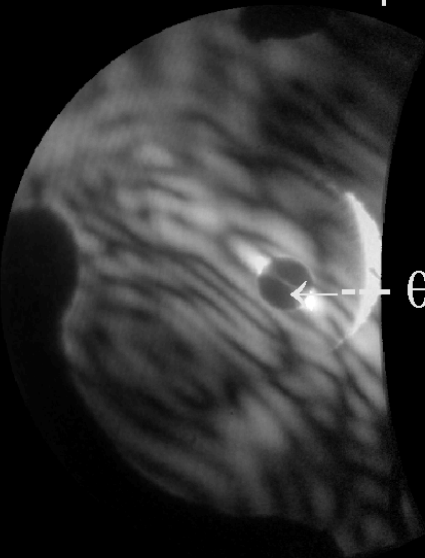
$\theta = 90^\circ$

$\theta = 0^\circ$



Forward Hemisphere

Backward Hemisphere

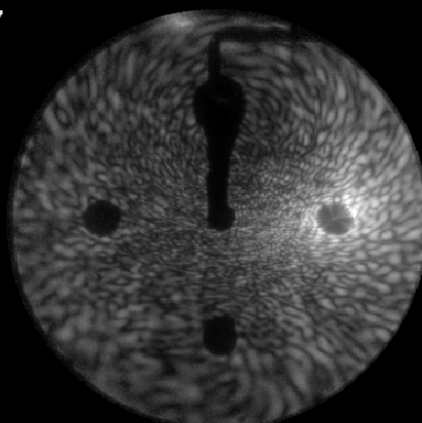


$\theta = 0^\circ$

$\theta = 180^\circ$

Ambient4\_\_5020  
Scattered Intensity: 6.2e+007

Raw Data

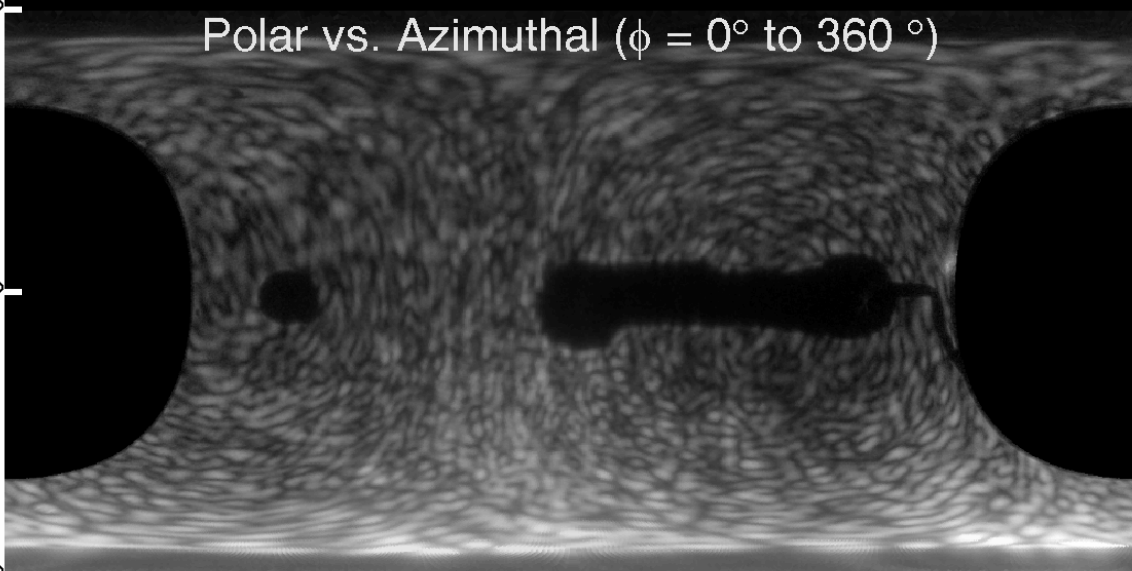


$\theta = 180^\circ$

Polar vs. Azimuthal ( $\phi = 0^\circ$  to  $360^\circ$ )

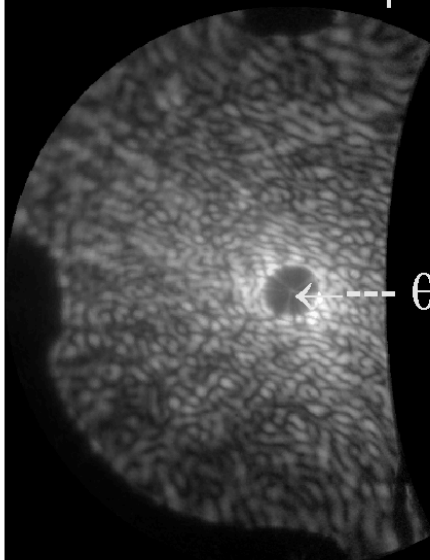
$\theta = 90^\circ$

$\theta = 0^\circ$

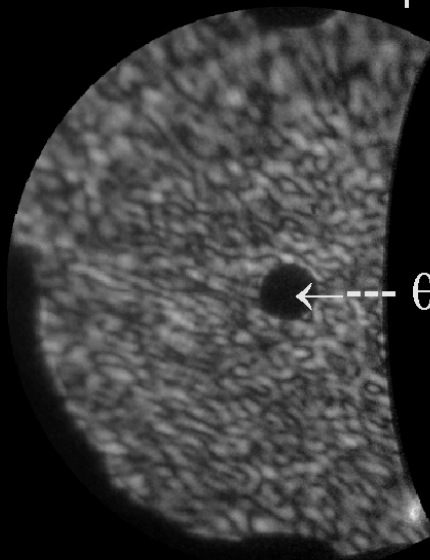


Forward Hemisphere

Backward Hemisphere



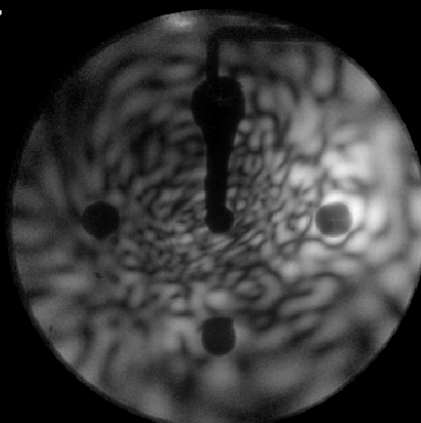
$\theta = 0^\circ$



$\theta = 180^\circ$

Ambient4\_\_5019  
Scattered Intensity: 6.6e+007

Raw Data

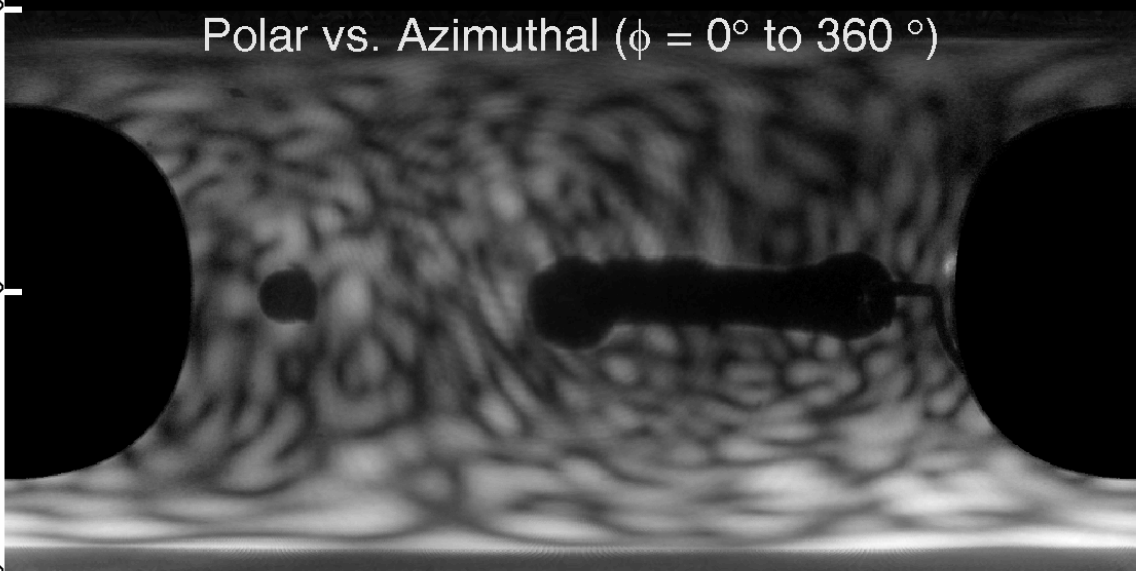


$\theta = 180^\circ$

Polar vs. Azimuthal ( $\phi = 0^\circ$  to  $360^\circ$ )

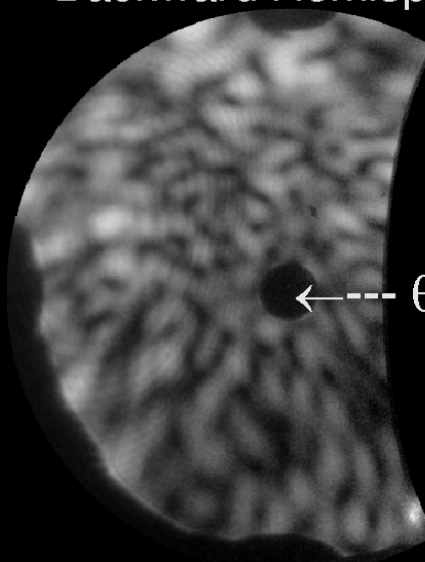
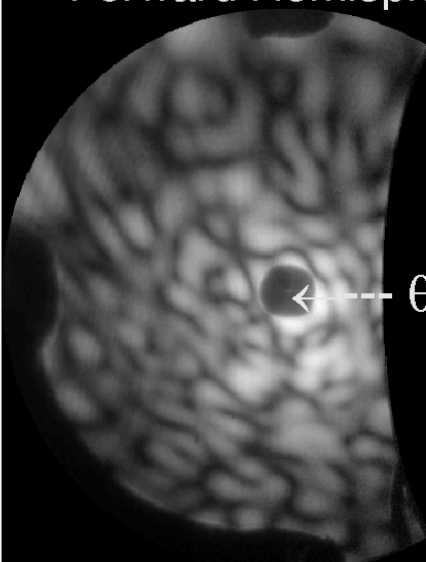
$\theta = 90^\circ$

$\theta = 0^\circ$



Forward Hemisphere

Backward Hemisphere



$\leftarrow \theta = 0^\circ$

$\leftarrow \theta = 180^\circ$

Ambient4\_\_5018  
Scattered Intensity: 5.0e+007

Raw Data

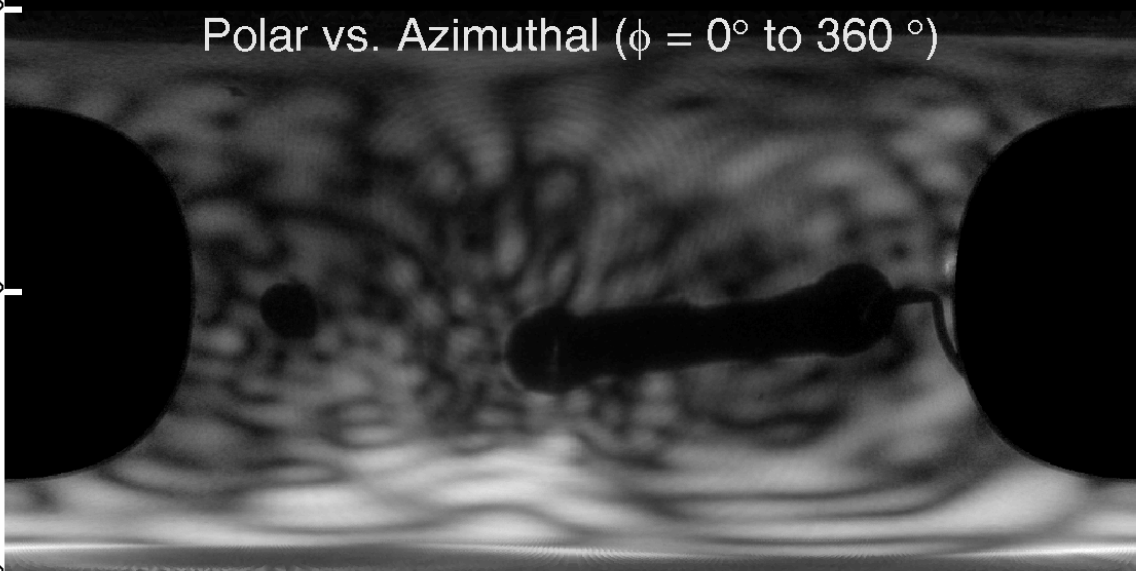


$\theta = 180^\circ$

Polar vs. Azimuthal ( $\phi = 0^\circ$  to  $360^\circ$ )

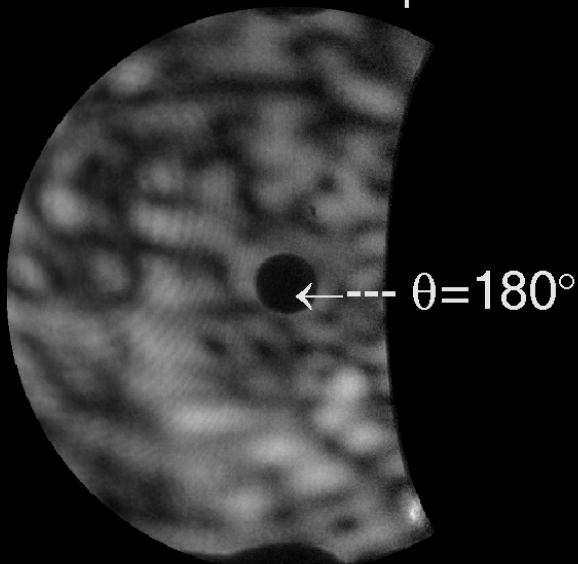
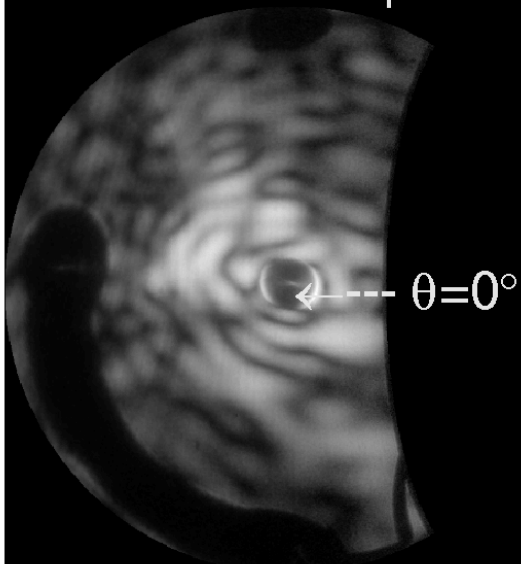
$\theta = 90^\circ$

$\theta = 0^\circ$



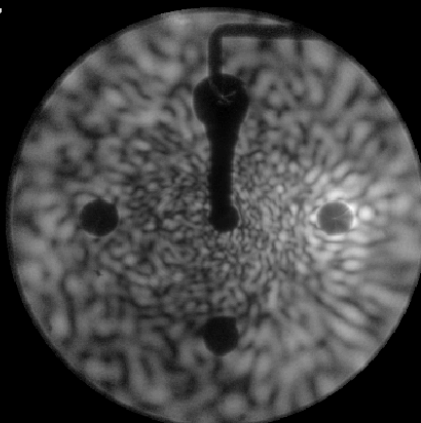
Forward Hemisphere

Backward Hemisphere



Ambient4\_\_5017  
Scattered Intensity: 8.3e+007

Raw Data

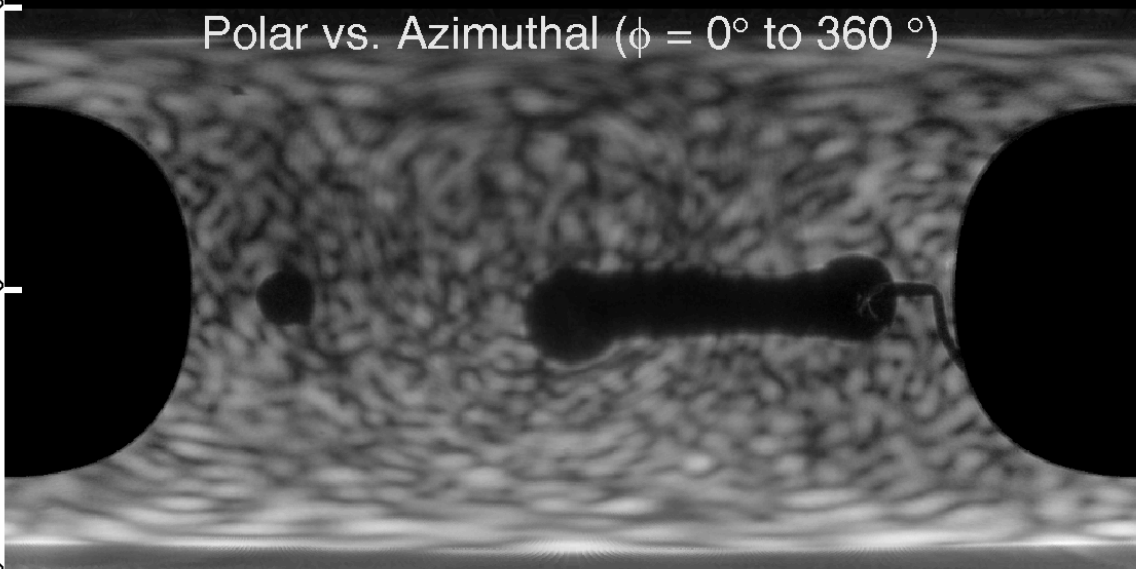


$\theta = 180^\circ$

Polar vs. Azimuthal ( $\phi = 0^\circ$  to  $360^\circ$ )

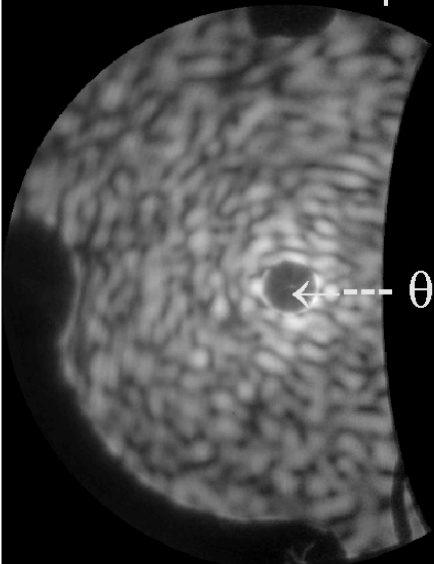
$\theta = 90^\circ$

$\theta = 0^\circ$

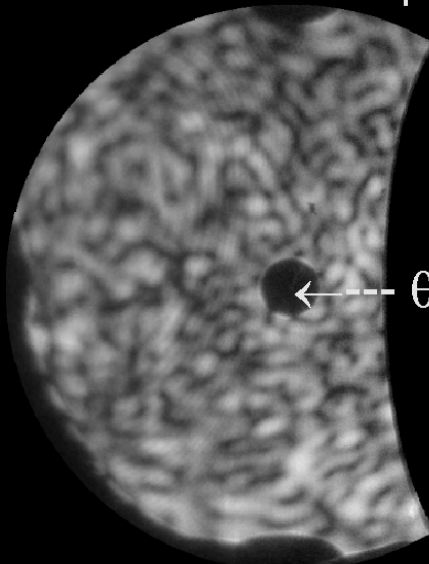


Forward Hemisphere

Backward Hemisphere



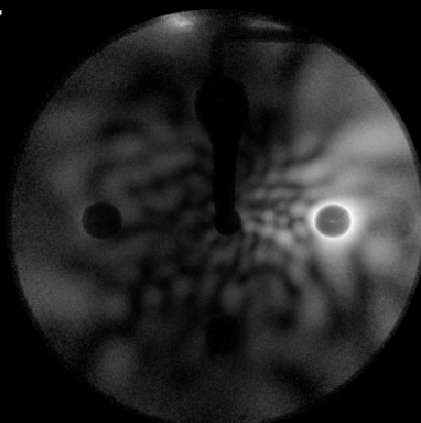
$\theta = 0^\circ$



$\theta = 180^\circ$

Ambient4\_\_5016  
Scattered Intensity: 2.3e+007

Raw Data



$\theta = 180^\circ$

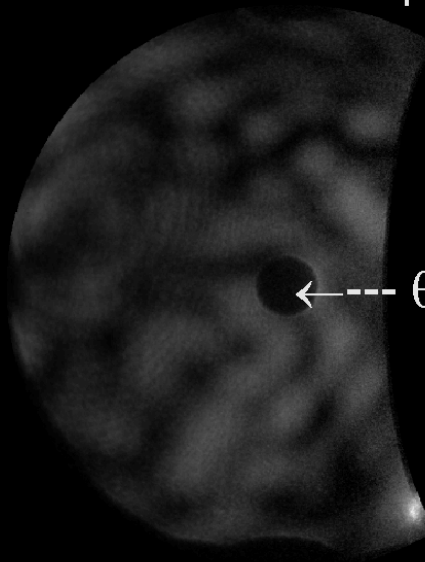
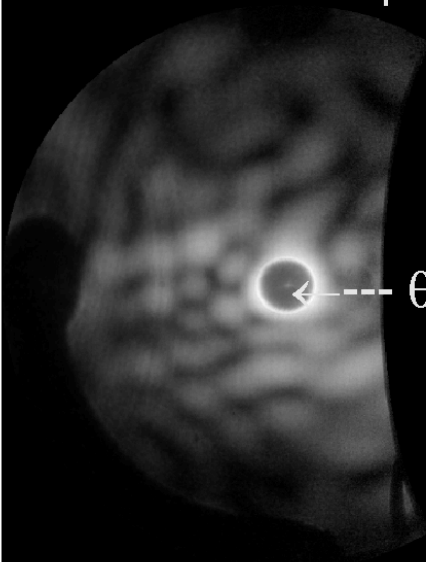
Polar vs. Azimuthal ( $\phi = 0^\circ$  to  $360^\circ$ )

$\theta = 90^\circ$

$\theta = 0^\circ$

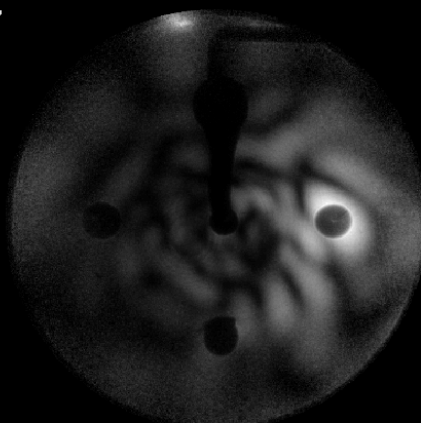
Forward Hemisphere

Backward Hemisphere



Ambient4\_\_5015  
Scattered Intensity: 1.0e+007

Raw Data



$\theta = 180^\circ$

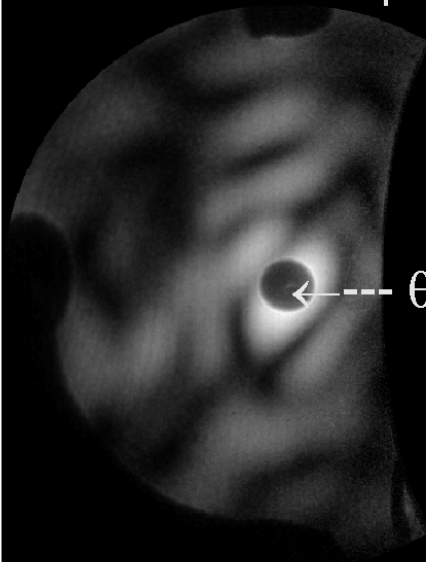
Polar vs. Azimuthal ( $\phi = 0^\circ$  to  $360^\circ$ )

$\theta = 90^\circ$

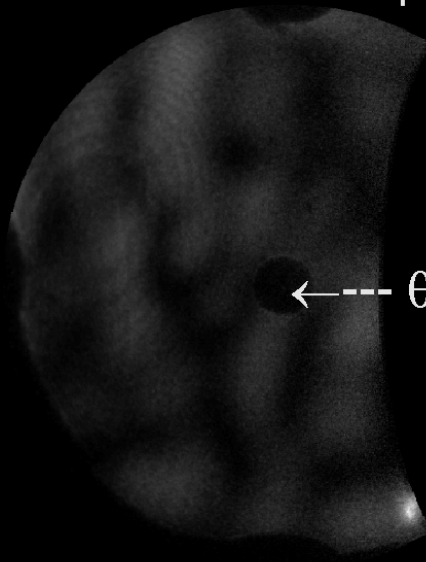
$\theta = 0^\circ$

Forward Hemisphere

Backward Hemisphere



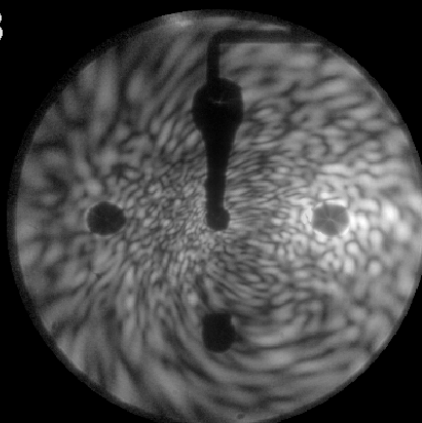
$\leftarrow \text{---} \theta = 0^\circ$



$\leftarrow \text{---} \theta = 180^\circ$

Ambient4\_\_5014  
Scattered Intensity: 1.5e+008

Raw Data

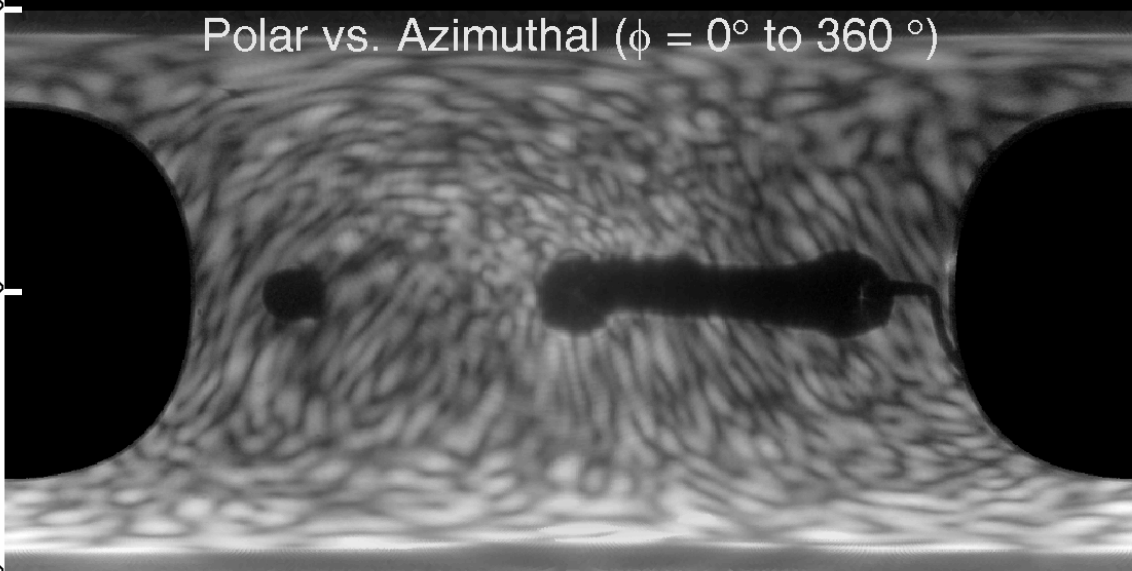


$\theta = 180^\circ$

Polar vs. Azimuthal ( $\phi = 0^\circ$  to  $360^\circ$ )

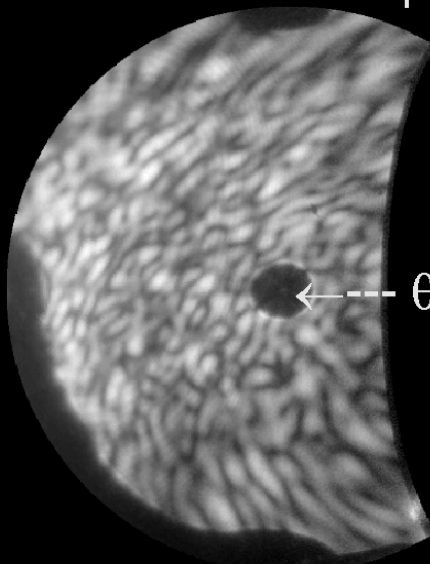
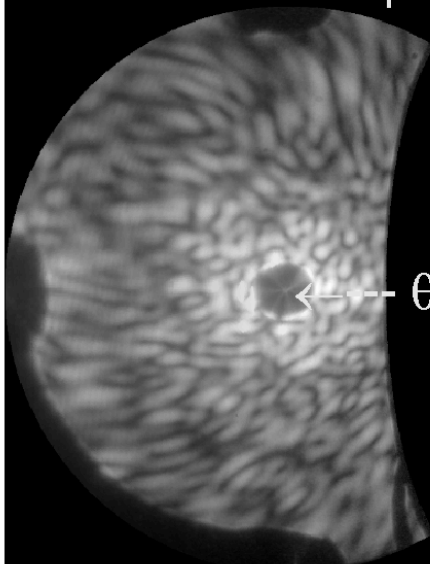
$\theta = 90^\circ$

$\theta = 0^\circ$



Forward Hemisphere

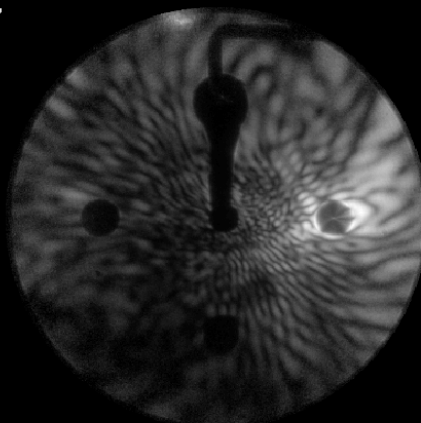
Backward Hemisphere





Ambient4\_\_5013  
Scattered Intensity: 3.0e+007

Raw Data

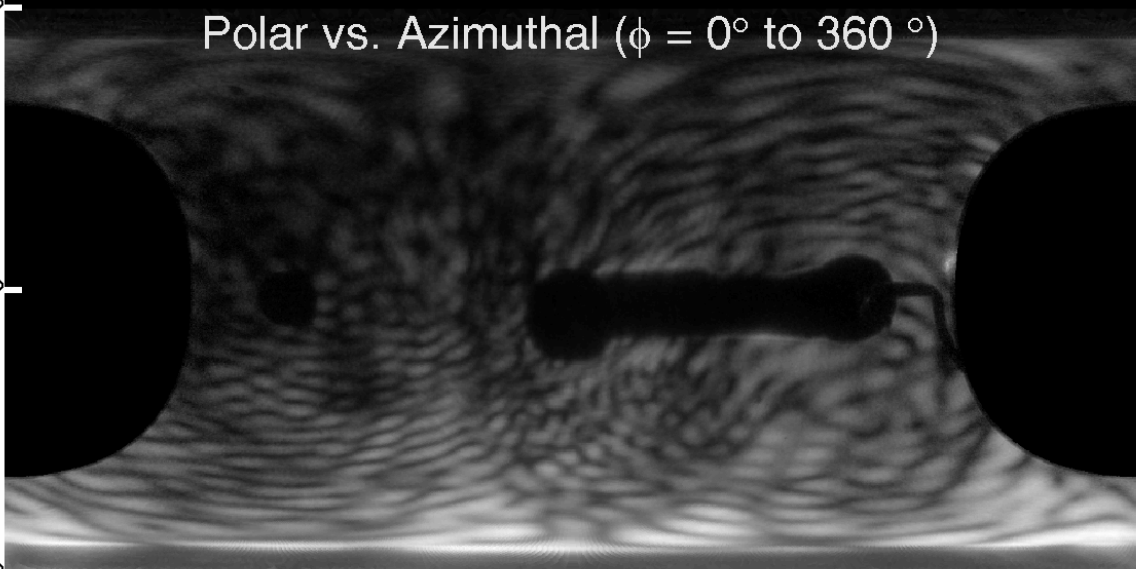


$\theta = 180^\circ$

Polar vs. Azimuthal ( $\phi = 0^\circ$  to  $360^\circ$ )

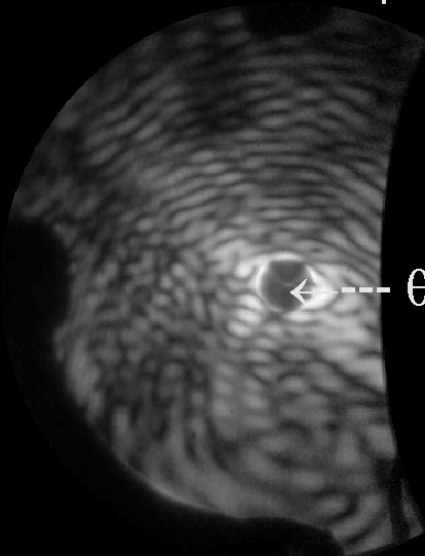
$\theta = 90^\circ$

$\theta = 0^\circ$

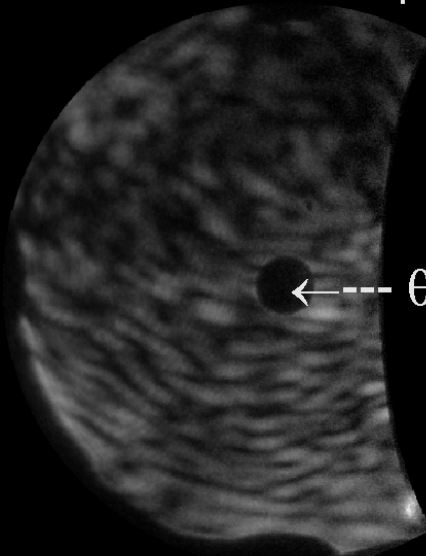


Forward Hemisphere

Backward Hemisphere



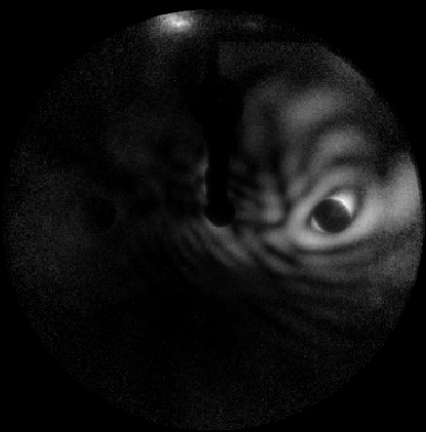
$\theta = 0^\circ$



$\theta = 180^\circ$

Ambient4\_\_5012  
Scattered Intensity: 4.0e+006

Raw Data



$\theta = 180^\circ$

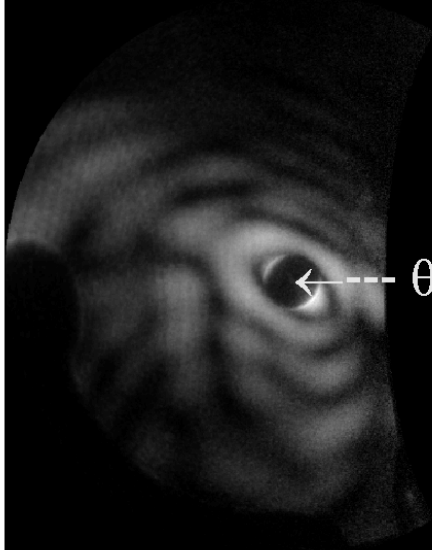
Polar vs. Azimuthal ( $\phi = 0^\circ$  to  $360^\circ$ )

$\theta = 90^\circ$

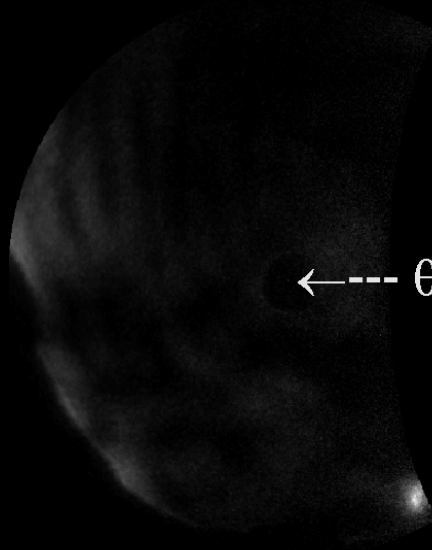
$\theta = 0^\circ$

Forward Hemisphere

Backward Hemisphere



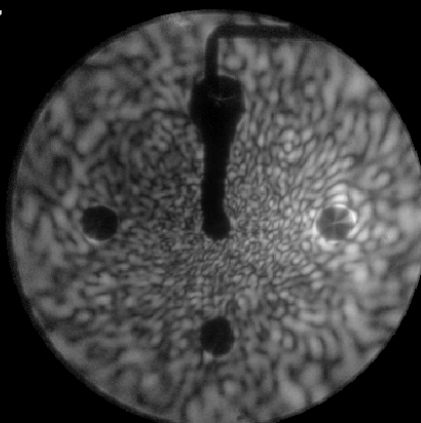
$\leftarrow$  ---  $\theta = 0^\circ$



$\leftarrow$  ---  $\theta = 180^\circ$

Ambient4\_\_5011  
Scattered Intensity: 7.8e+007

Raw Data

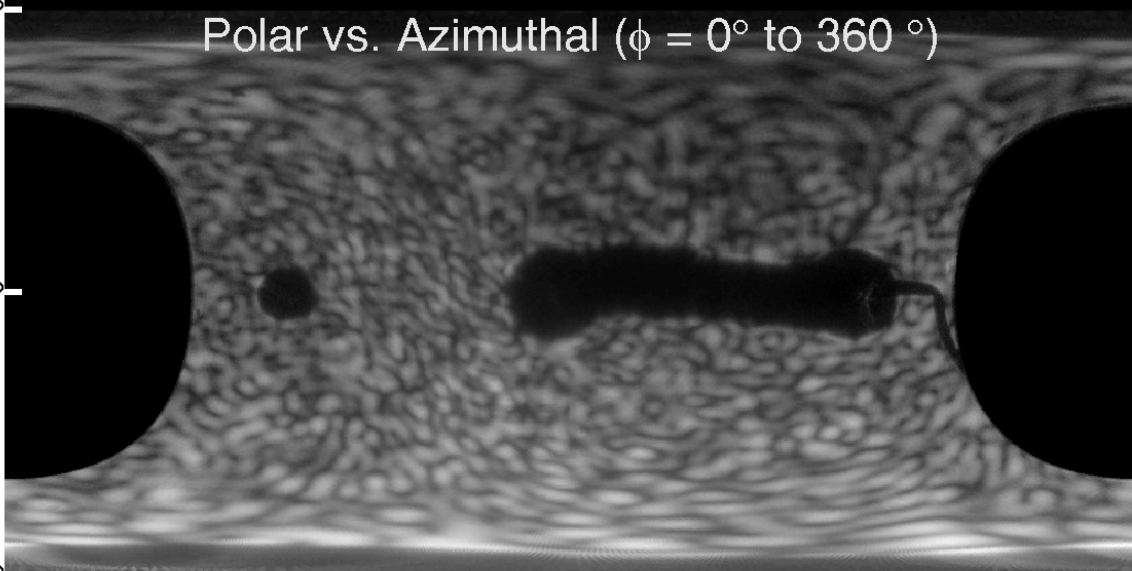


$\theta = 180^\circ$

Polar vs. Azimuthal ( $\phi = 0^\circ$  to  $360^\circ$ )

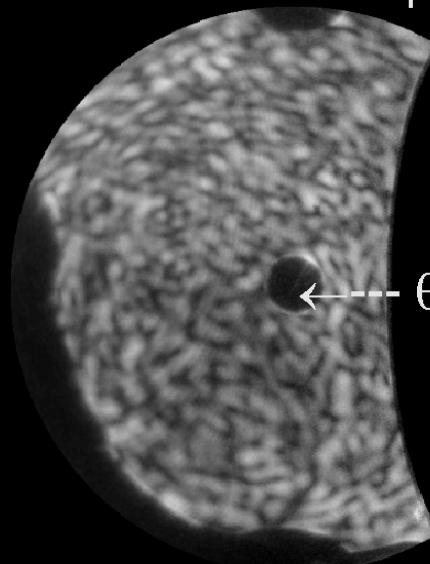
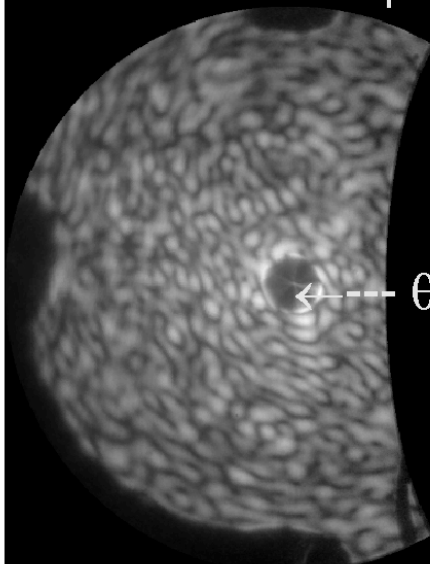
$\theta = 90^\circ$

$\theta = 0^\circ$



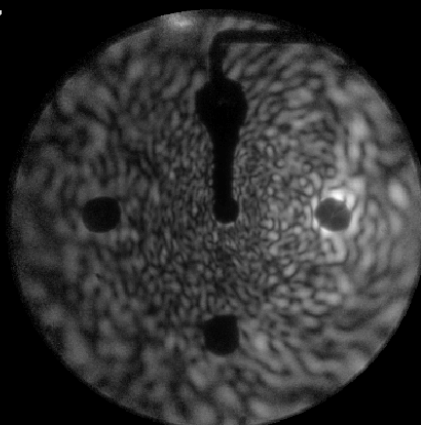
Forward Hemisphere

Backward Hemisphere



Ambient4\_\_5009  
Scattered Intensity: 2.8e+007

Raw Data

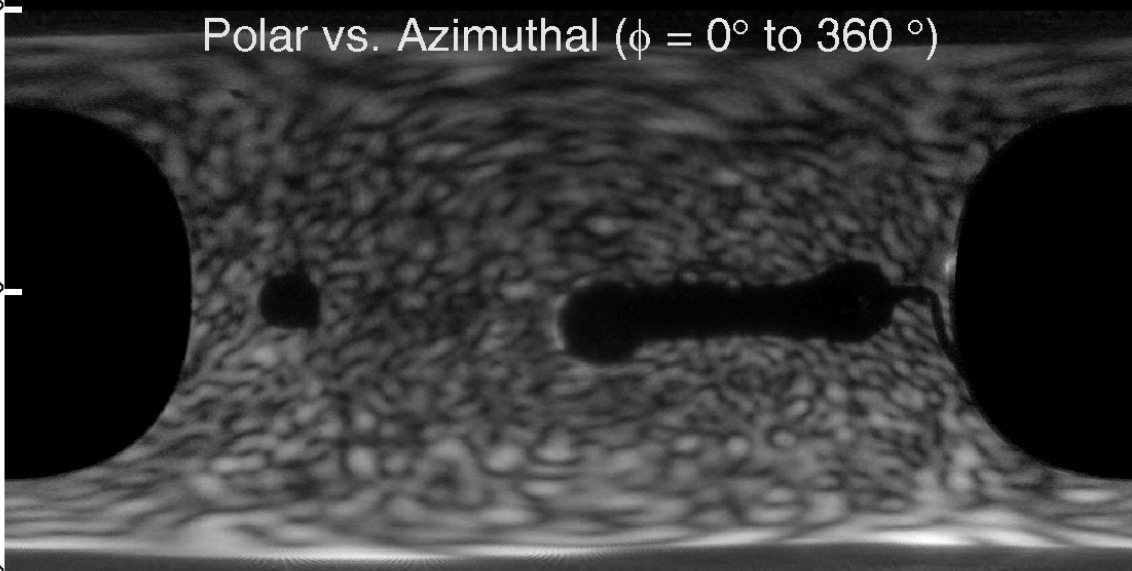


$\theta = 180^\circ$

Polar vs. Azimuthal ( $\phi = 0^\circ$  to  $360^\circ$ )

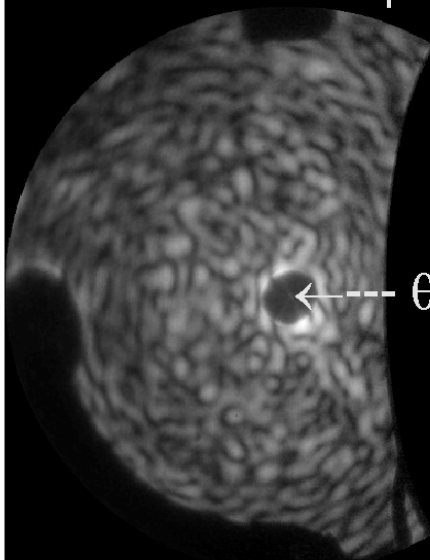
$\theta = 90^\circ$

$\theta = 0^\circ$

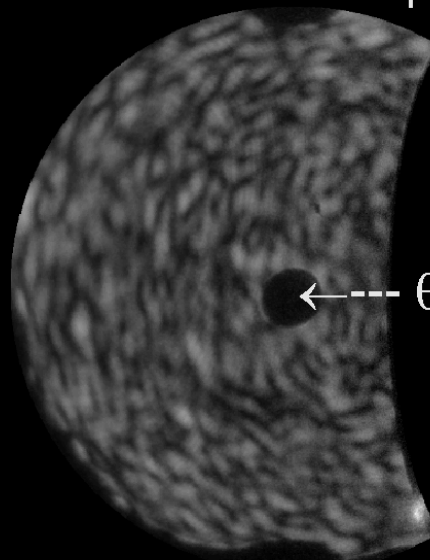


Forward Hemisphere

Backward Hemisphere



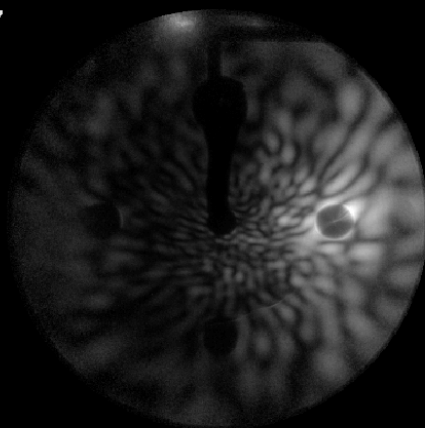
$\theta = 0^\circ$



$\theta = 180^\circ$

Ambient4\_\_5008  
Scattered Intensity: 2.9e+007

Raw Data



$\theta = 180^\circ$

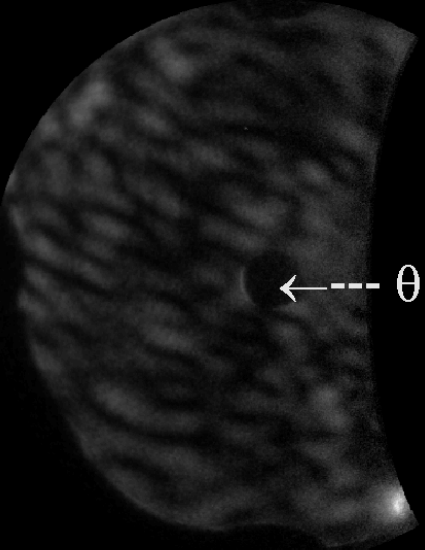
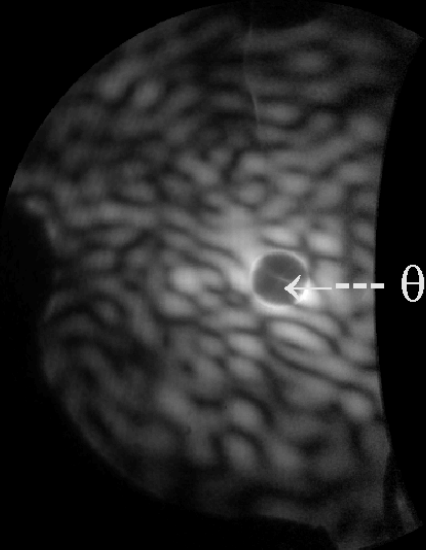
Polar vs. Azimuthal ( $\phi = 0^\circ$  to  $360^\circ$ )

$\theta = 90^\circ$

$\theta = 0^\circ$

Forward Hemisphere

Backward Hemisphere

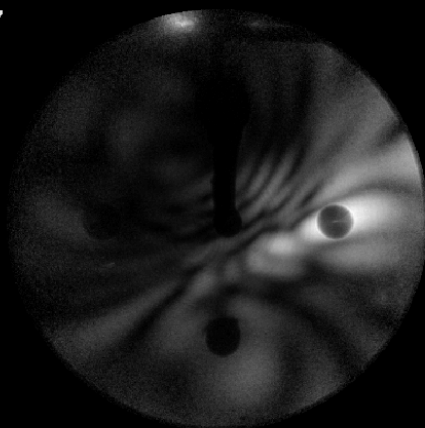


$\leftarrow$  ---  $\theta = 0^\circ$

$\leftarrow$  ---  $\theta = 180^\circ$

Ambient4\_\_5007  
Scattered Intensity: 1.3e+007

Raw Data



$\theta = 180^\circ$

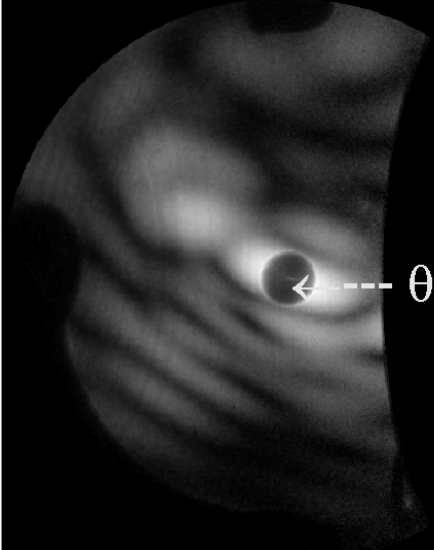
Polar vs. Azimuthal ( $\phi = 0^\circ$  to  $360^\circ$ )

$\theta = 90^\circ$

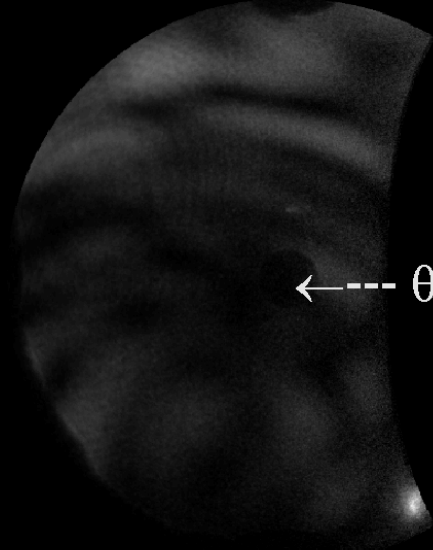
$\theta = 0^\circ$

Forward Hemisphere

Backward Hemisphere



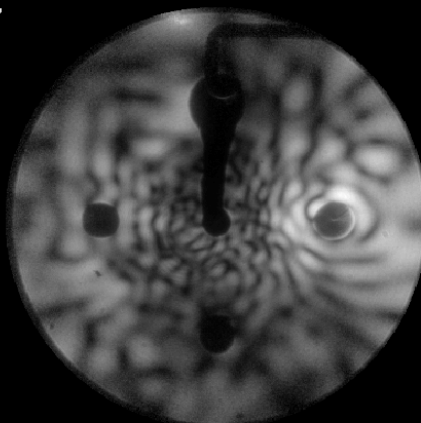
$\theta = 0^\circ$



$\theta = 180^\circ$

Ambient4\_\_5006  
Scattered Intensity: 5.7e+007

Raw Data

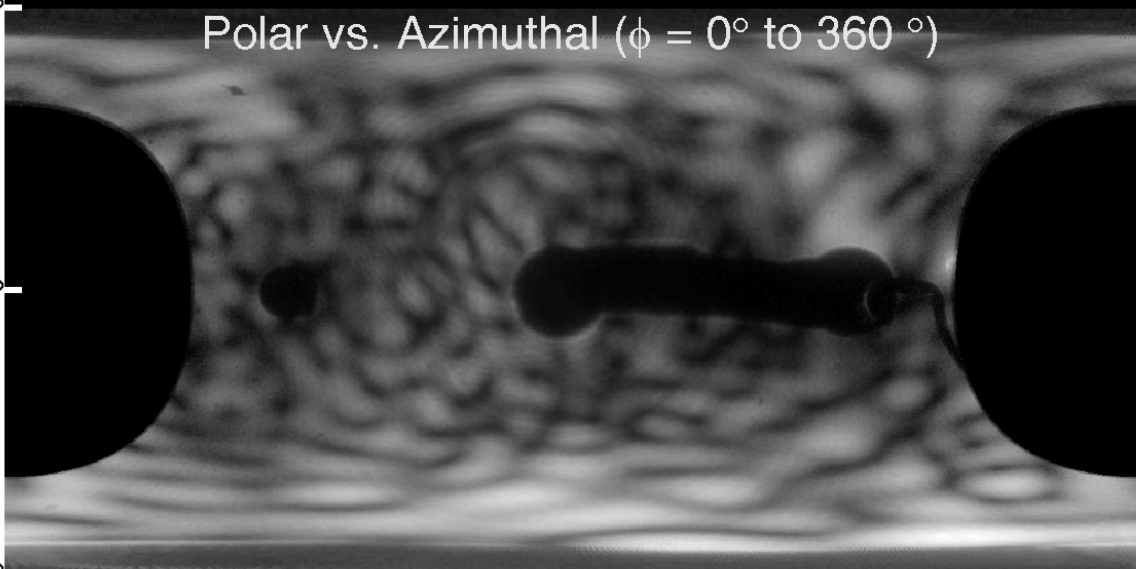


$\theta = 180^\circ$

Polar vs. Azimuthal ( $\phi = 0^\circ$  to  $360^\circ$ )

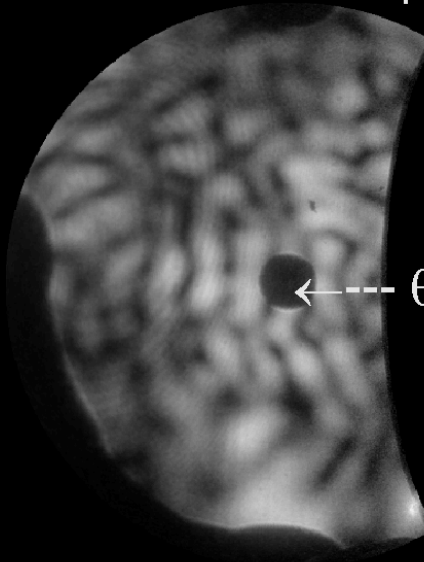
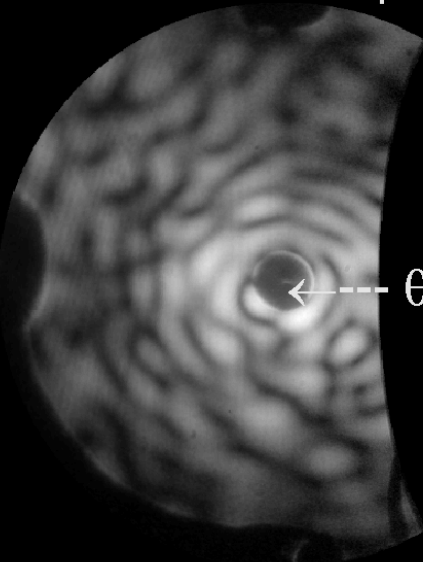
$\theta = 90^\circ$

$\theta = 0^\circ$



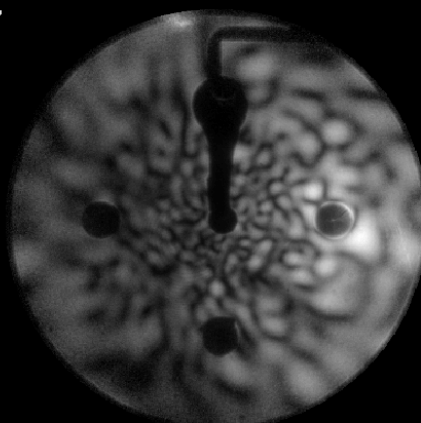
Forward Hemisphere

Backward Hemisphere



Ambient4\_\_5005  
Scattered Intensity: 3.2e+007

Raw Data

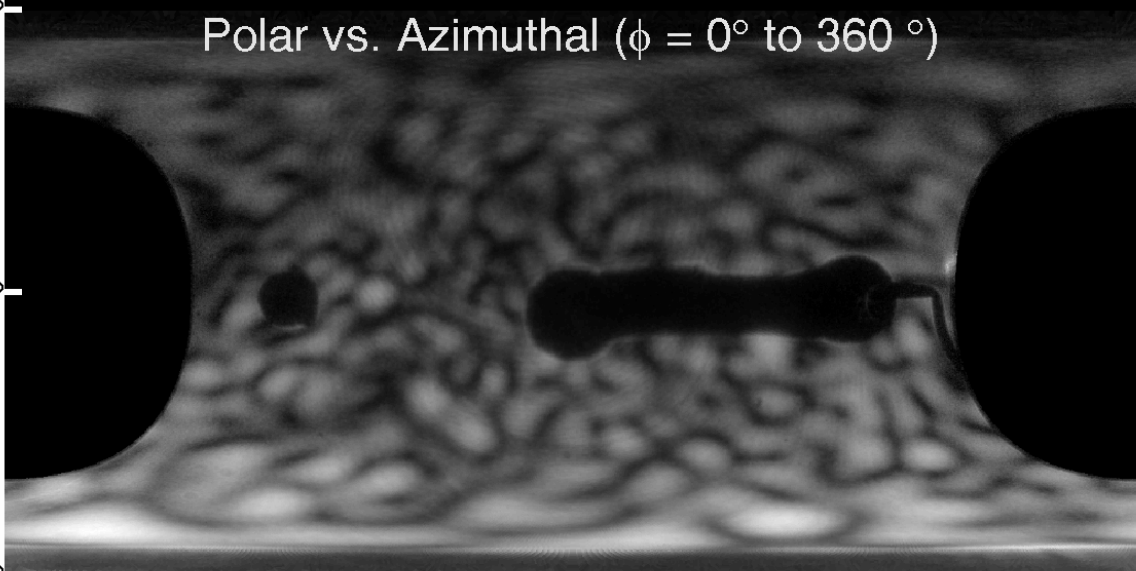


$\theta = 180^\circ$

Polar vs. Azimuthal ( $\phi = 0^\circ$  to  $360^\circ$ )

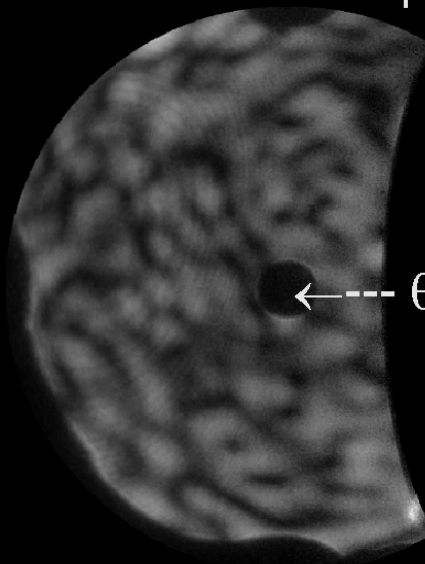
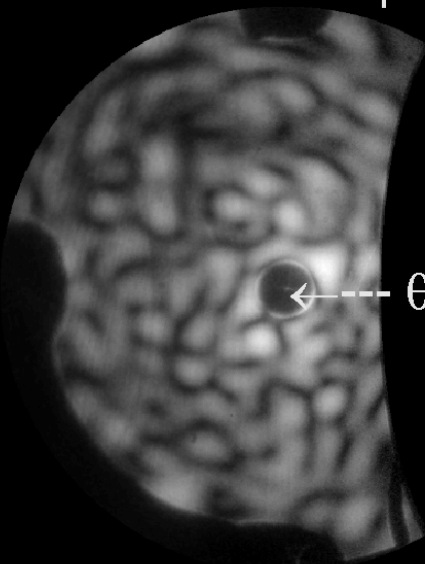
$\theta = 90^\circ$

$\theta = 0^\circ$



Forward Hemisphere

Backward Hemisphere



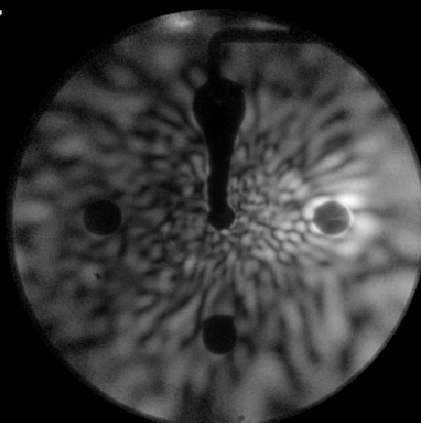
$\leftarrow$  ---  $\theta = 0^\circ$

$\leftarrow$  ---  $\theta = 180^\circ$



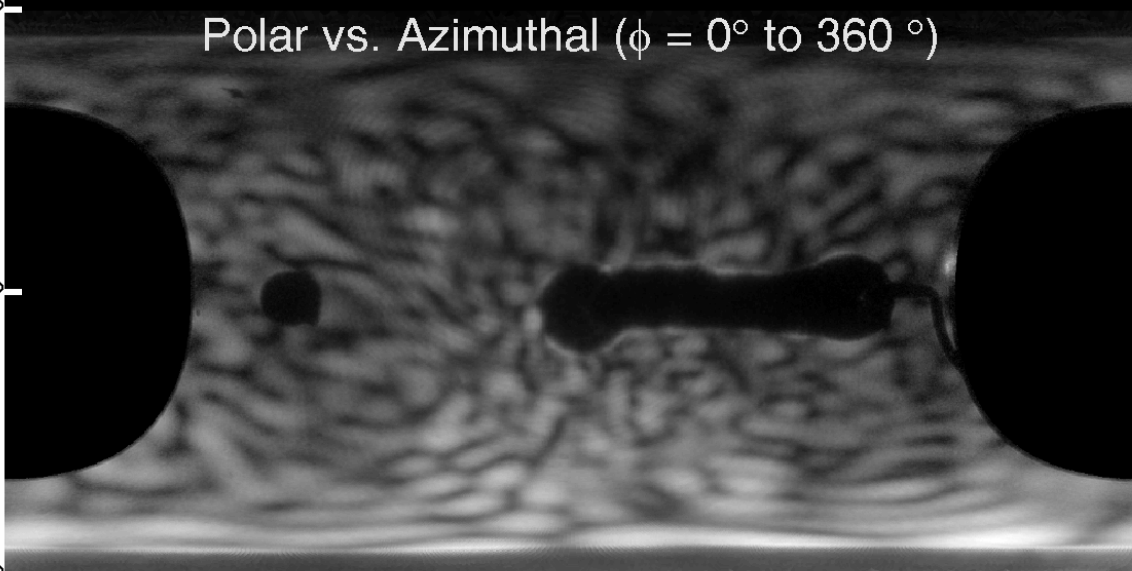
Ambient4\_\_5004  
Scattered Intensity: 4.3e+007

Raw Data



$\theta = 180^\circ$

Polar vs. Azimuthal ( $\phi = 0^\circ$  to  $360^\circ$ )

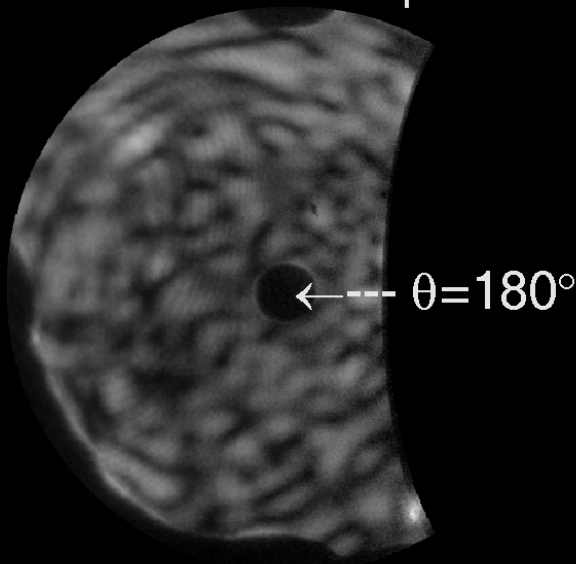
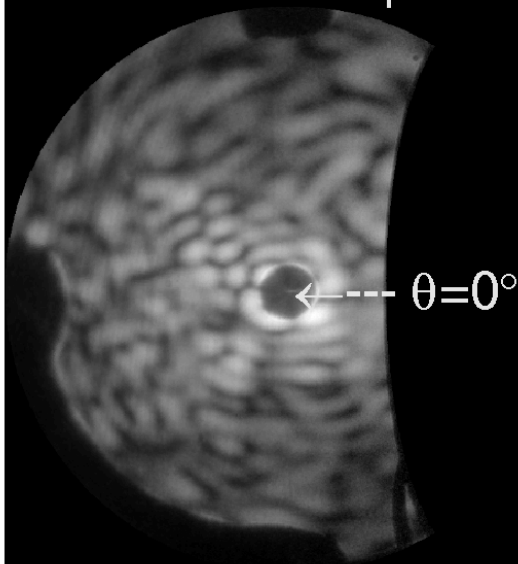


$\theta = 90^\circ$

$\theta = 0^\circ$

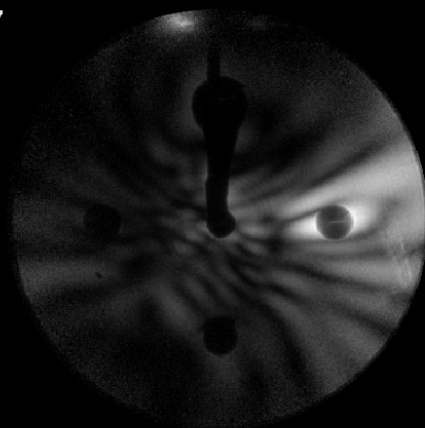
Forward Hemisphere

Backward Hemisphere



Ambient4\_\_5003  
Scattered Intensity: 1.3e+007

Raw Data



$\theta = 180^\circ$

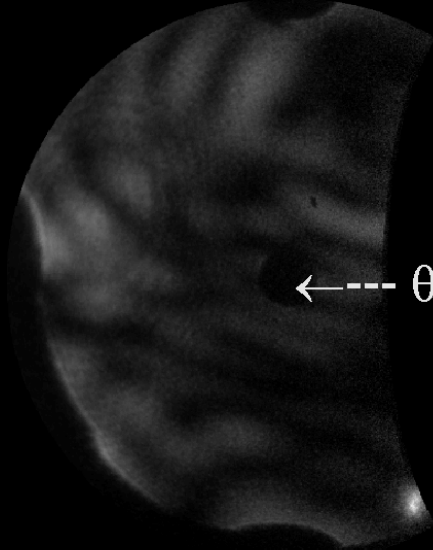
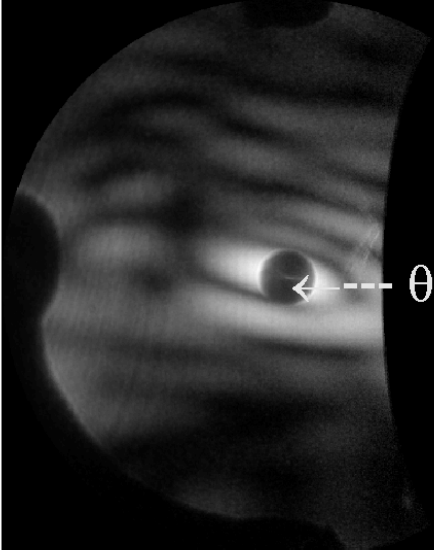
Polar vs. Azimuthal ( $\phi = 0^\circ$  to  $360^\circ$ )

$\theta = 90^\circ$

$\theta = 0^\circ$

Forward Hemisphere

Backward Hemisphere

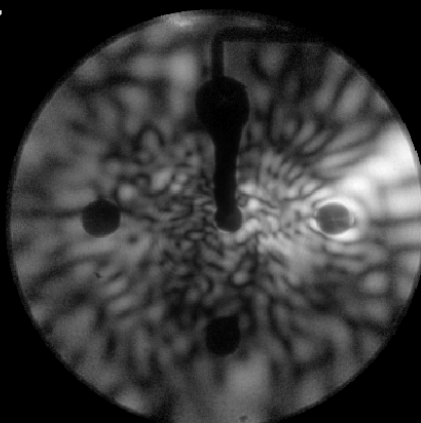


$\leftarrow$  ---  $\theta = 0^\circ$

$\leftarrow$  ---  $\theta = 180^\circ$

Ambient4\_\_5002  
Scattered Intensity: 6.4e+007

Raw Data

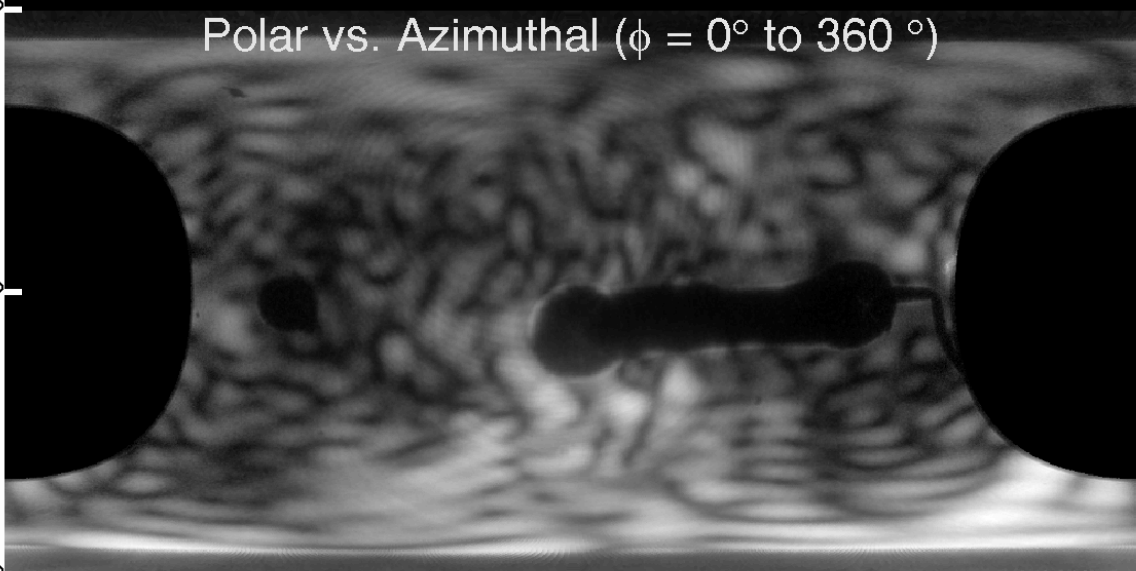


$\theta = 180^\circ$

Polar vs. Azimuthal ( $\phi = 0^\circ$  to  $360^\circ$ )

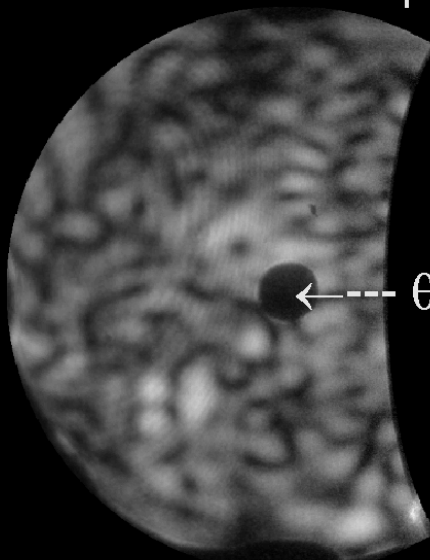
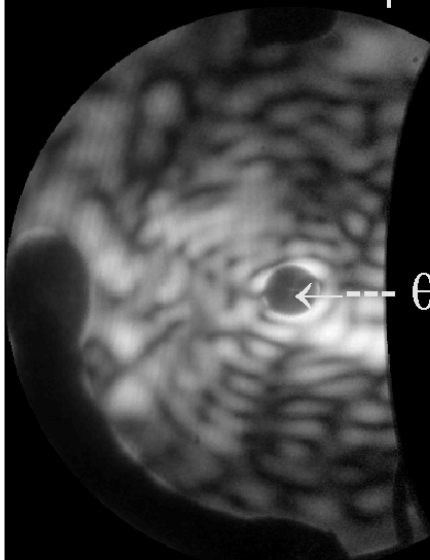
$\theta = 90^\circ$

$\theta = 0^\circ$



Forward Hemisphere

Backward Hemisphere

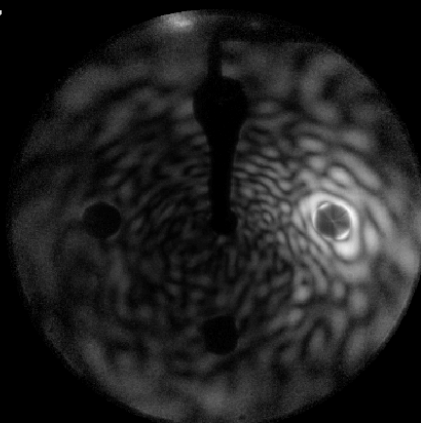


$\leftarrow$  ---  $\theta = 0^\circ$

$\leftarrow$  ---  $\theta = 180^\circ$

Ambient4\_\_5001  
Scattered Intensity: 1.6e+007

Raw Data

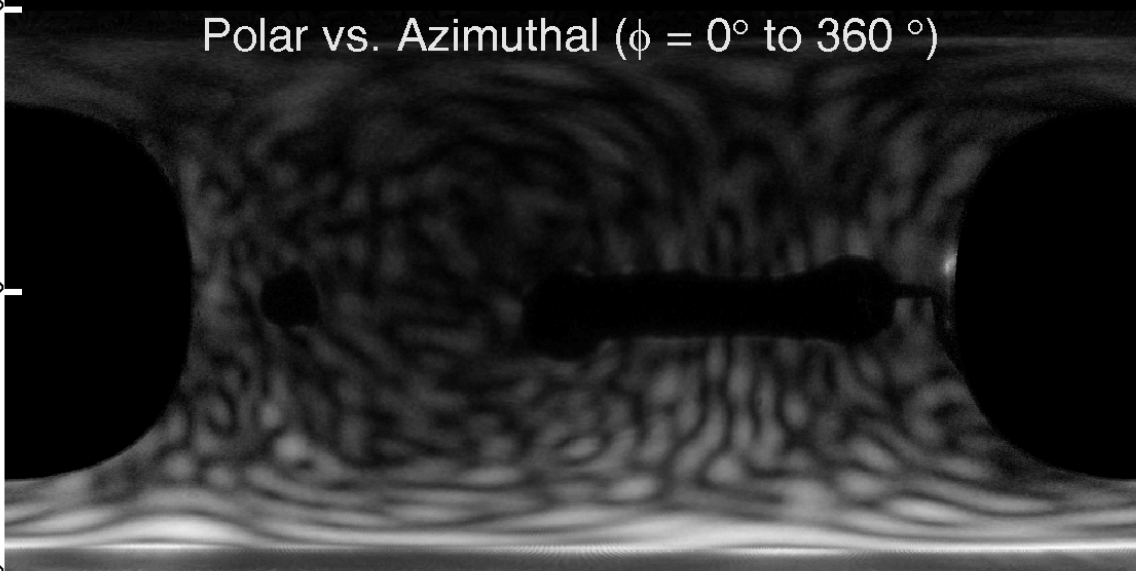


$\theta = 180^\circ$

Polar vs. Azimuthal ( $\phi = 0^\circ$  to  $360^\circ$ )

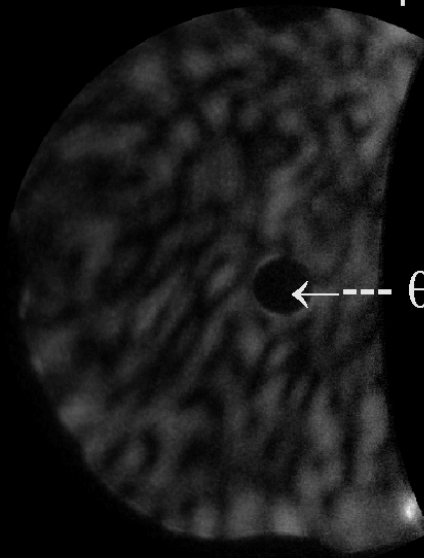
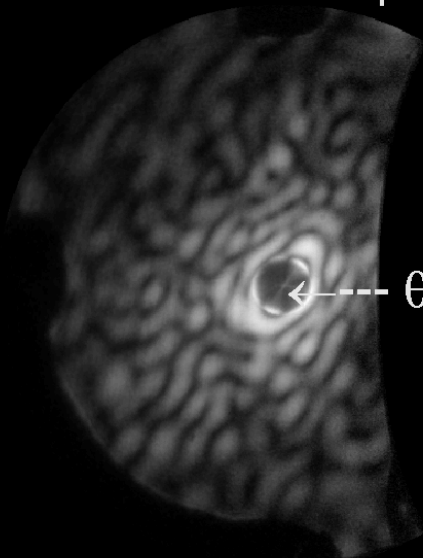
$\theta = 90^\circ$

$\theta = 0^\circ$



Forward Hemisphere

Backward Hemisphere



$\theta = 0^\circ$

$\theta = 180^\circ$