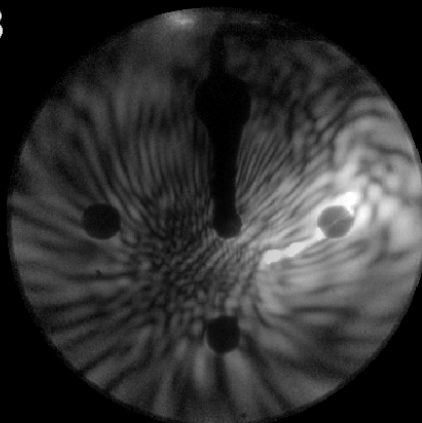


Ambient4__5046
Scattered Intensity: 1.0e+008

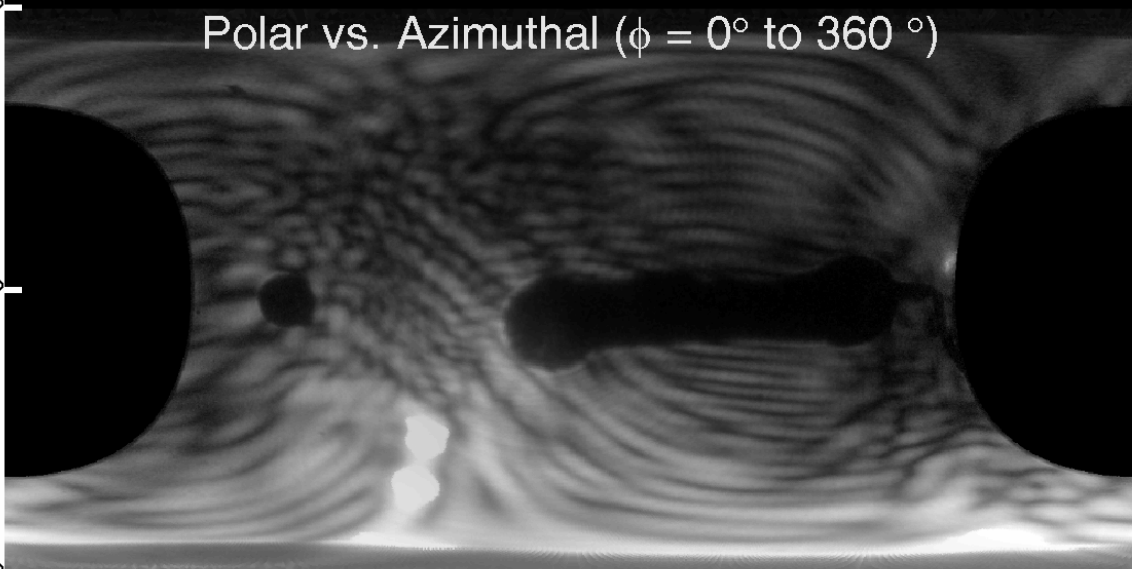
Raw Data



$\theta = 180^\circ$

Polar vs. Azimuthal ($\phi = 0^\circ$ to 360°)

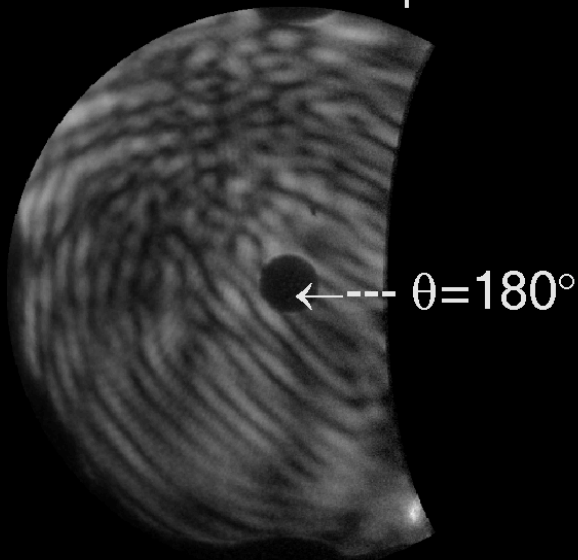
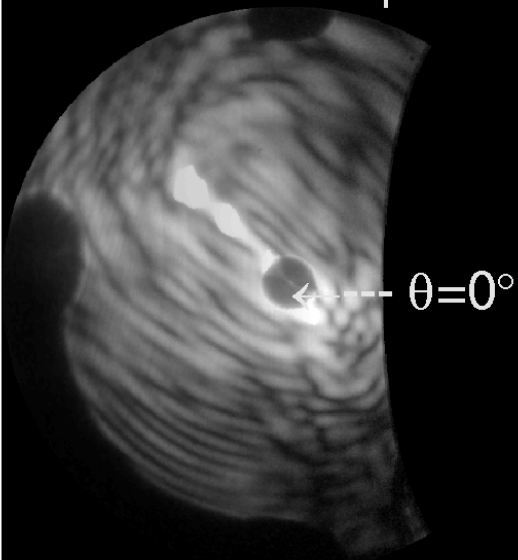
$\theta = 90^\circ$



$\theta = 0^\circ$

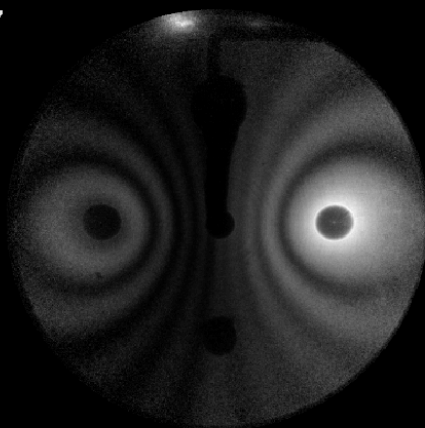
Forward Hemisphere

Backward Hemisphere



Ambient4__5045
Scattered Intensity: 1.1e+007

Raw Data



$\theta = 180^\circ$

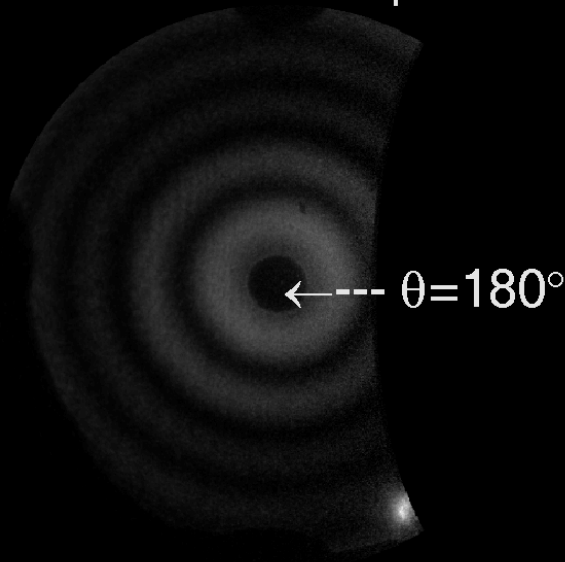
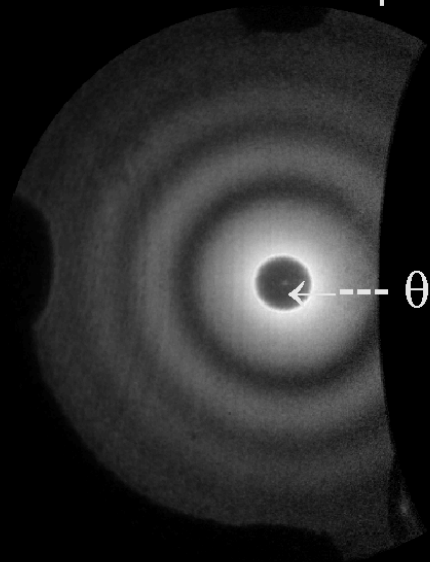
Polar vs. Azimuthal ($\phi = 0^\circ$ to 360°)

$\theta = 90^\circ$

$\theta = 0^\circ$

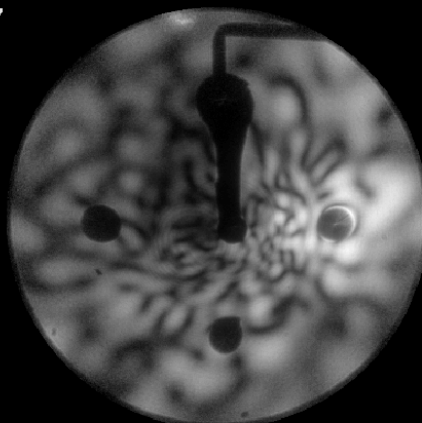
Forward Hemisphere

Backward Hemisphere



Ambient4__5044
Scattered Intensity: 6.4e+007

Raw Data

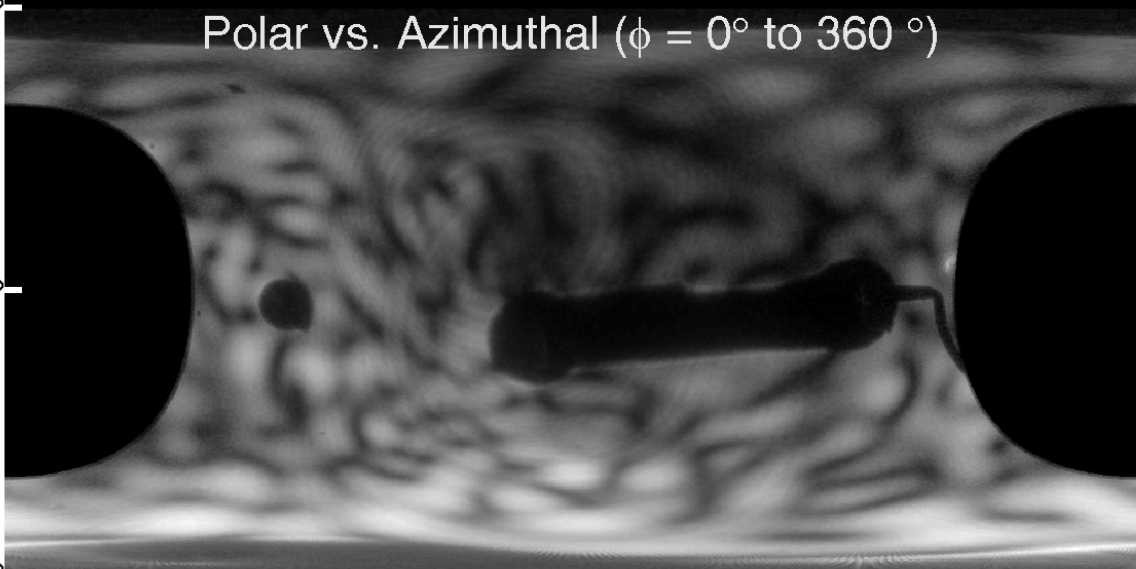


$\theta = 180^\circ$

Polar vs. Azimuthal ($\phi = 0^\circ$ to 360°)

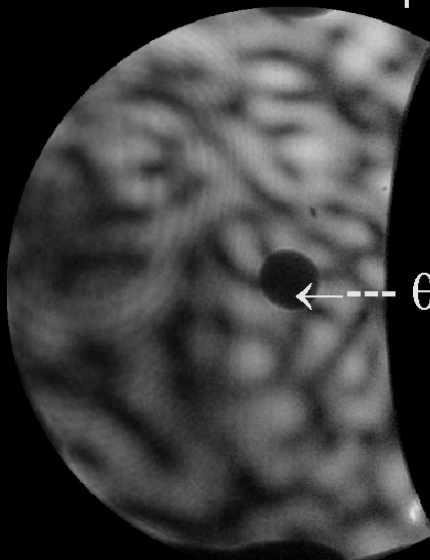
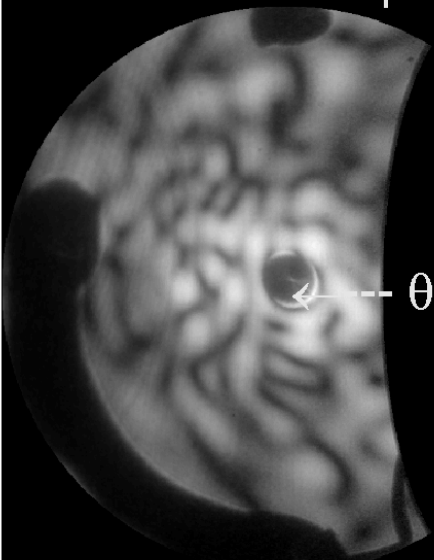
$\theta = 90^\circ$

$\theta = 0^\circ$



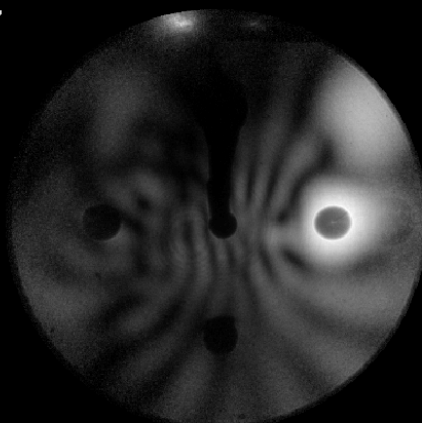
Forward Hemisphere

Backward Hemisphere



Ambient4__5043
Scattered Intensity: 2.3e+007

Raw Data

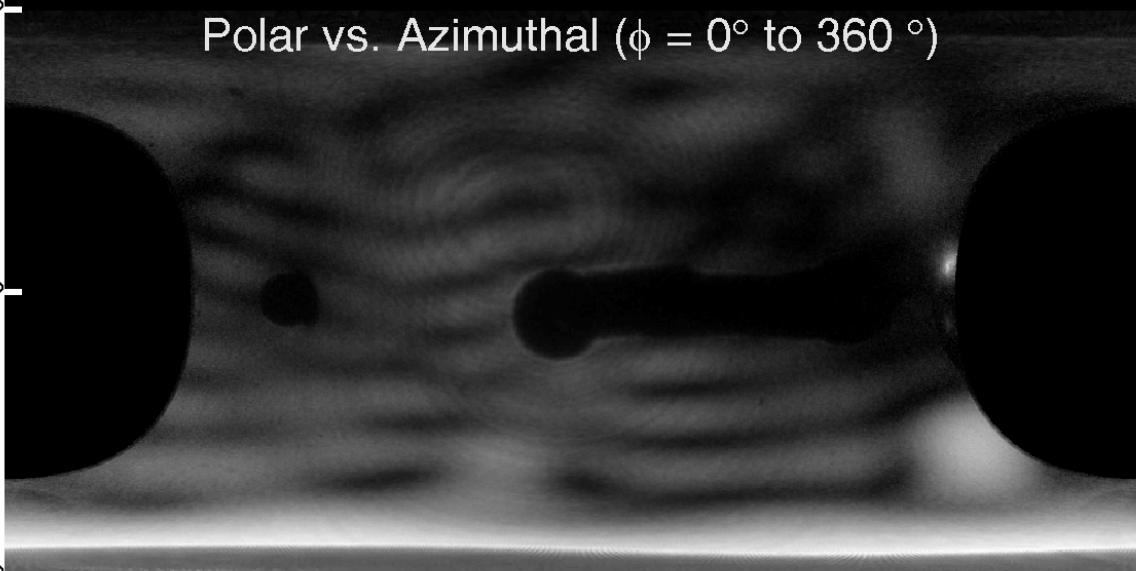


$\theta = 180^\circ$

Polar vs. Azimuthal ($\phi = 0^\circ$ to 360°)

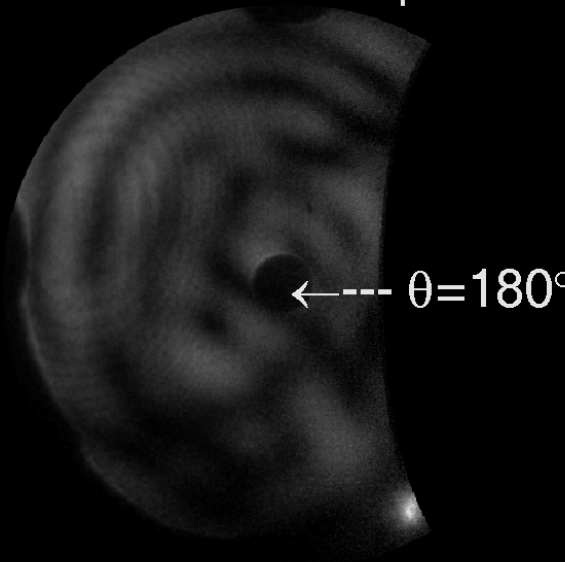
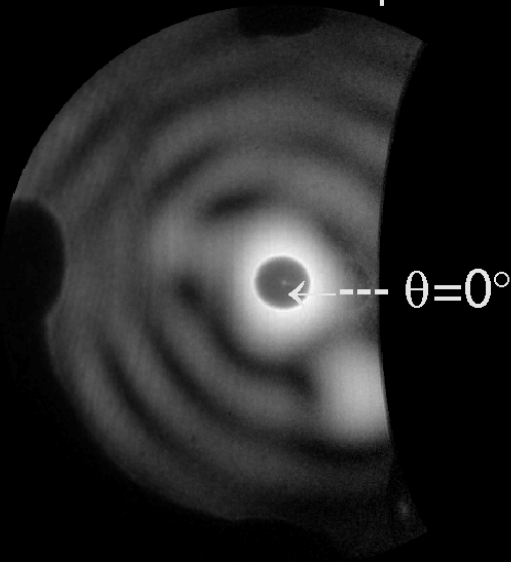
$\theta = 90^\circ$

$\theta = 0^\circ$



Forward Hemisphere

Backward Hemisphere

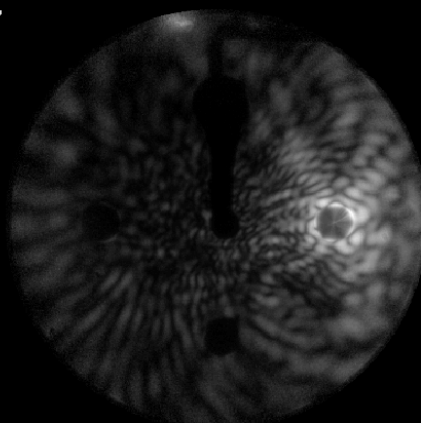


$\theta = 0^\circ$

$\theta = 180^\circ$

Ambient4__5042
Scattered Intensity: 2.1e+007

Raw Data



$\theta = 180^\circ$

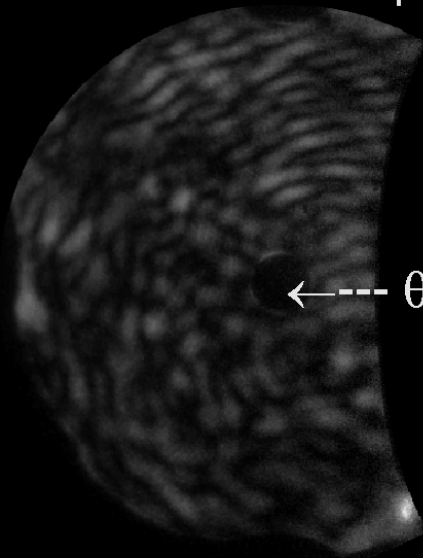
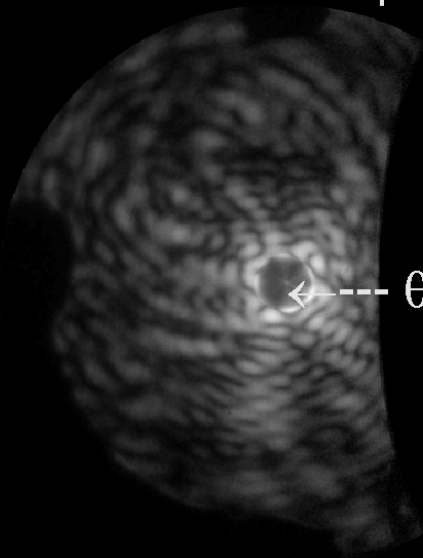
Polar vs. Azimuthal ($\phi = 0^\circ$ to 360°)

$\theta = 90^\circ$

$\theta = 0^\circ$

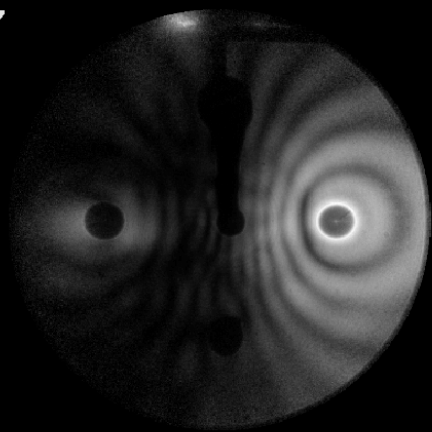
Forward Hemisphere

Backward Hemisphere



Ambient4__5041
Scattered Intensity: 1.9e+007

Raw Data



$\theta = 180^\circ$

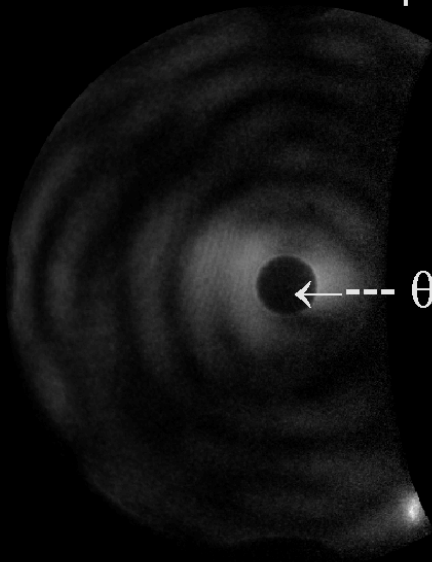
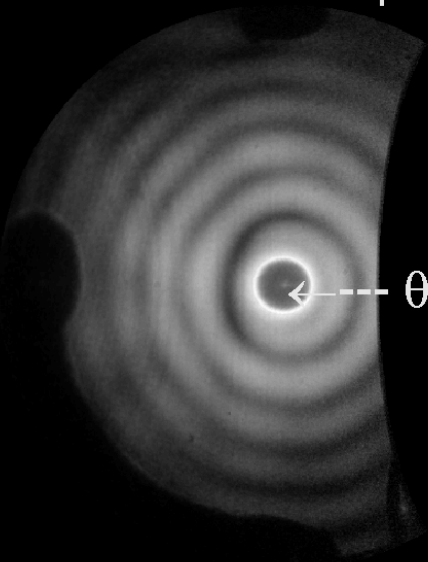
Polar vs. Azimuthal ($\phi = 0^\circ$ to 360°)

$\theta = 90^\circ$

$\theta = 0^\circ$

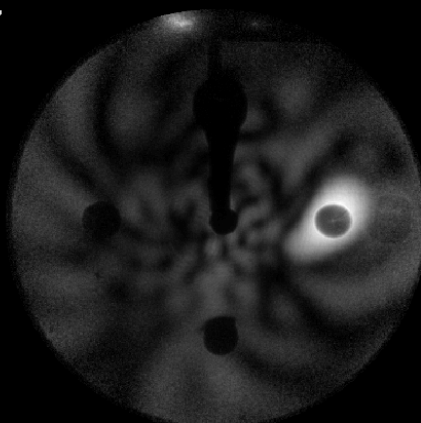
Forward Hemisphere

Backward Hemisphere



Ambient4__5040
Scattered Intensity: 1.1e+007

Raw Data



$\theta = 180^\circ$

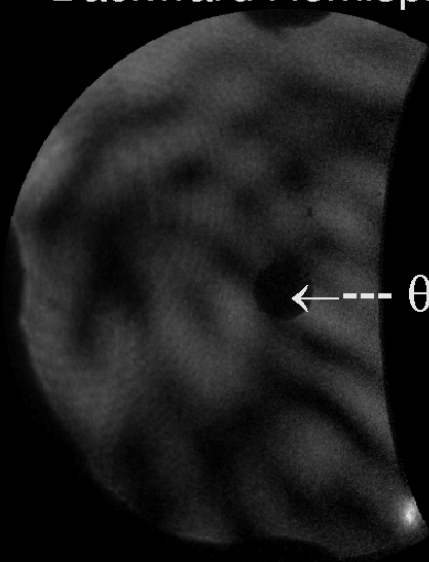
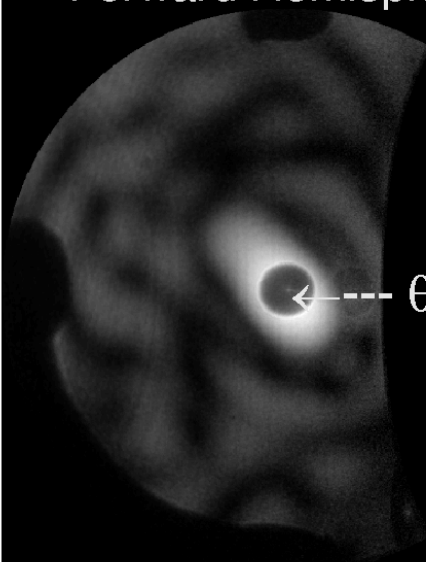
Polar vs. Azimuthal ($\phi = 0^\circ$ to 360°)

$\theta = 90^\circ$

$\theta = 0^\circ$

Forward Hemisphere

Backward Hemisphere

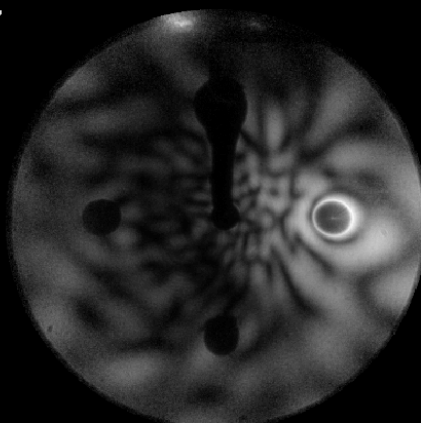


$\theta = 0^\circ$

$\theta = 180^\circ$

Ambient4__5039
Scattered Intensity: 1.7e+007

Raw Data



$\theta = 180^\circ$

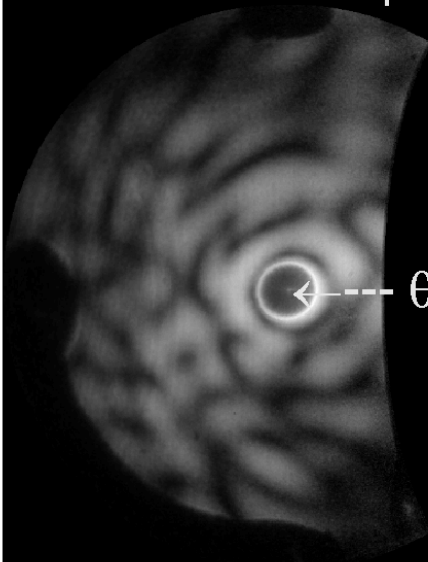
Polar vs. Azimuthal ($\phi = 0^\circ$ to 360°)

$\theta = 90^\circ$

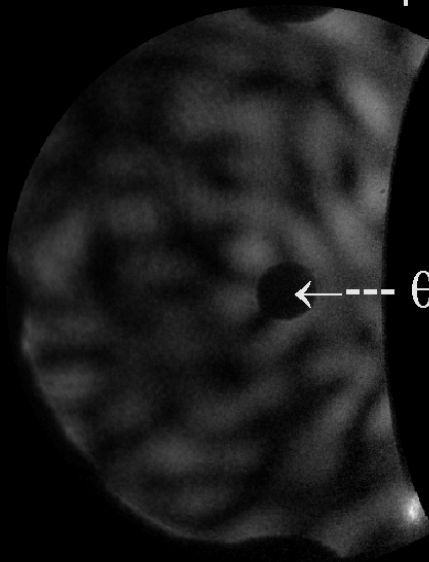
$\theta = 0^\circ$

Forward Hemisphere

Backward Hemisphere



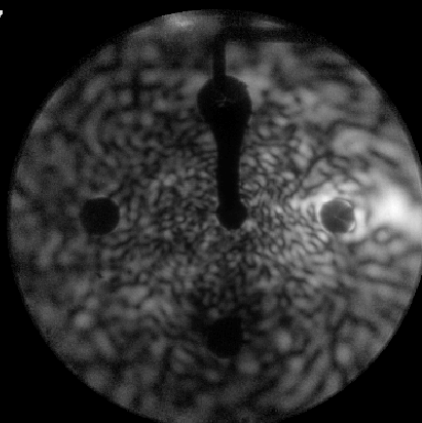
$\theta = 0^\circ$



$\theta = 180^\circ$

Ambient4__5038
Scattered Intensity: 3.5e+007

Raw Data

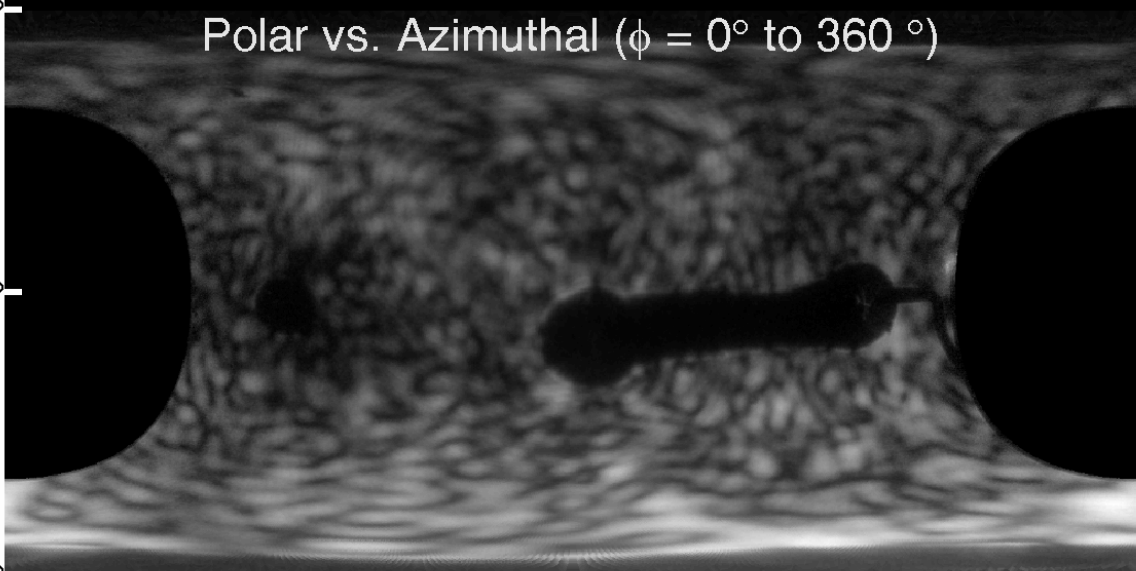


$\theta = 180^\circ$

Polar vs. Azimuthal ($\phi = 0^\circ$ to 360°)

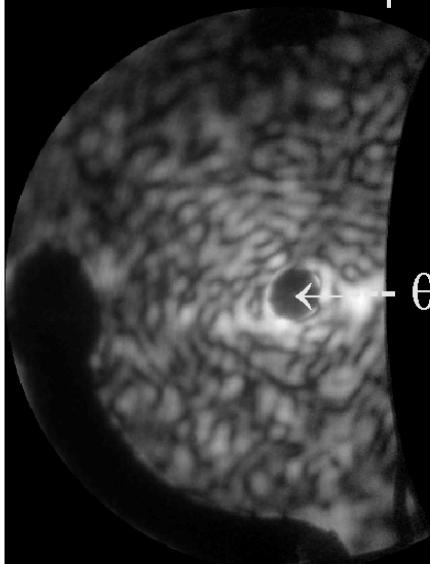
$\theta = 90^\circ$

$\theta = 0^\circ$

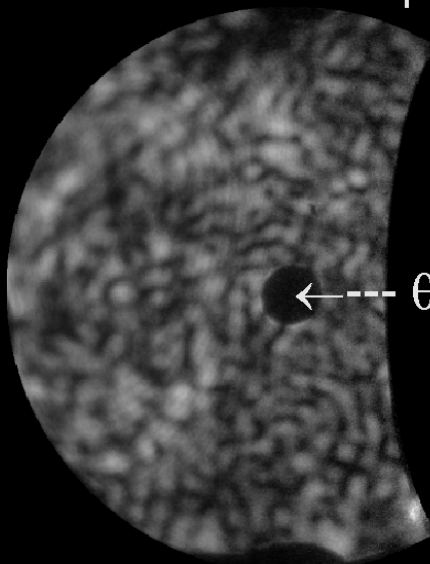


Forward Hemisphere

Backward Hemisphere



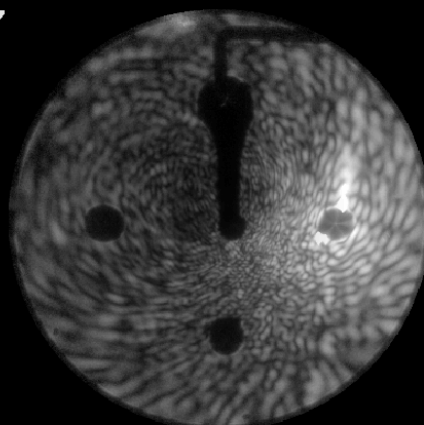
$\leftarrow \theta = 0^\circ$



$\leftarrow \theta = 180^\circ$

Ambient4__5037
Scattered Intensity: 8.4e+007

Raw Data

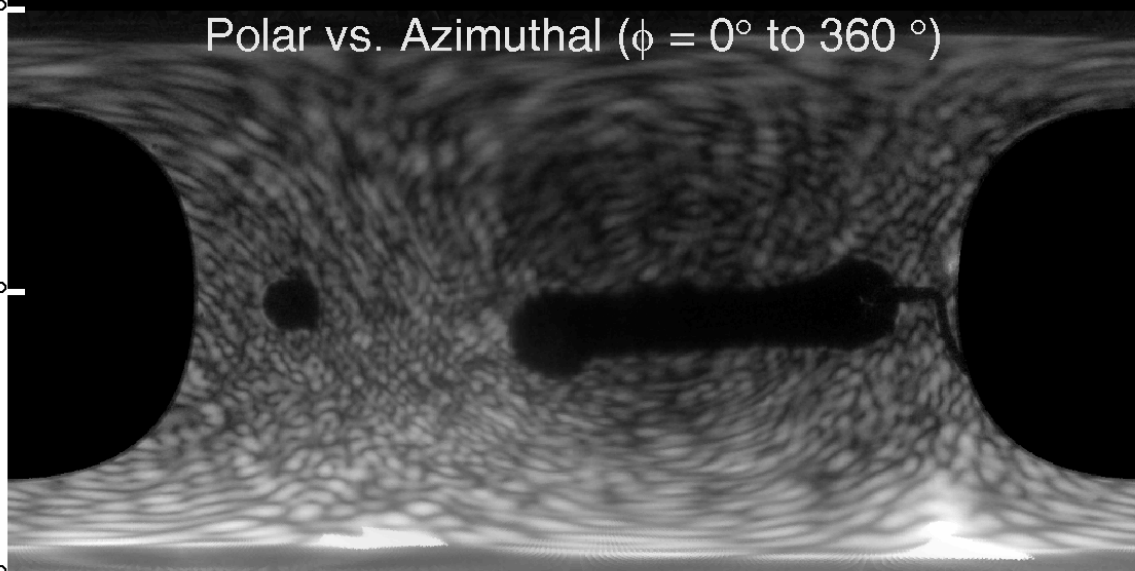


$\theta = 180^\circ$

Polar vs. Azimuthal ($\phi = 0^\circ$ to 360°)

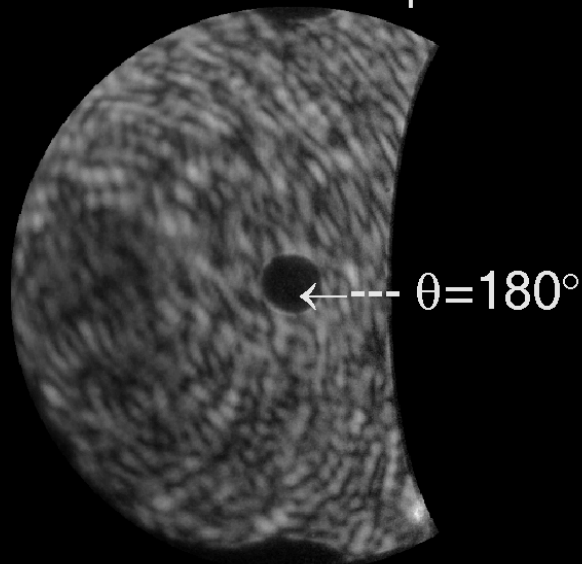
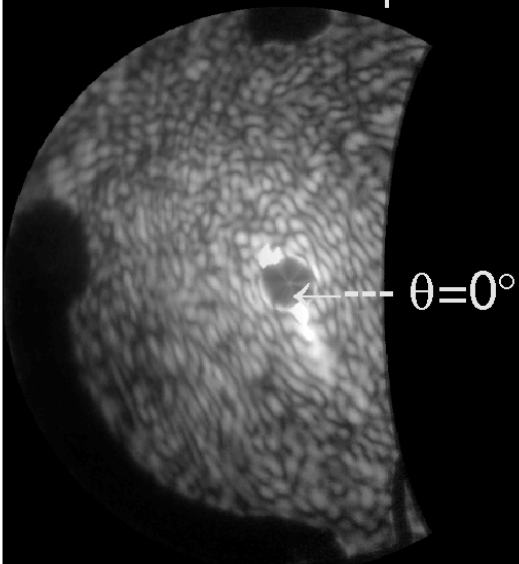
$\theta = 90^\circ$

$\theta = 0^\circ$



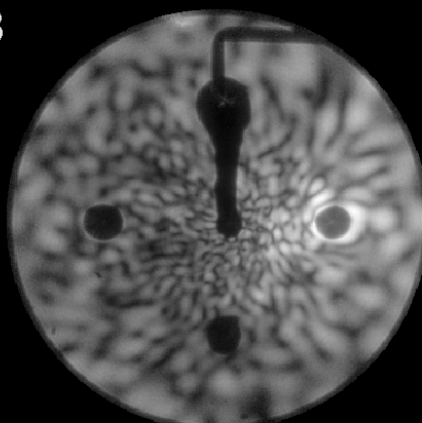
Forward Hemisphere

Backward Hemisphere



Ambient4__5036
Scattered Intensity: 1.1e+008

Raw Data

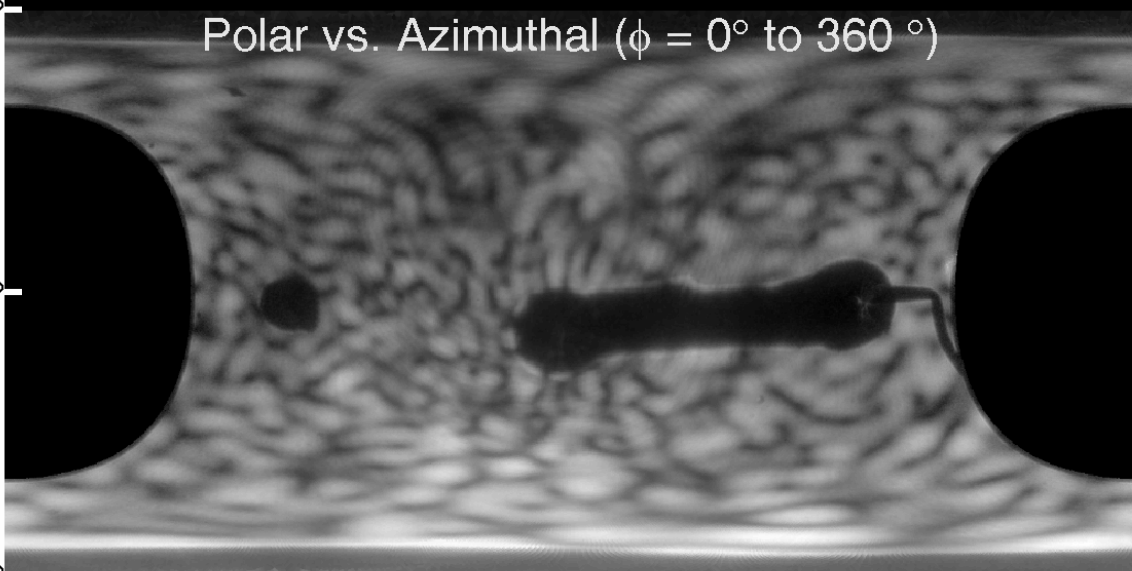


$\theta = 180^\circ$

Polar vs. Azimuthal ($\phi = 0^\circ$ to 360°)

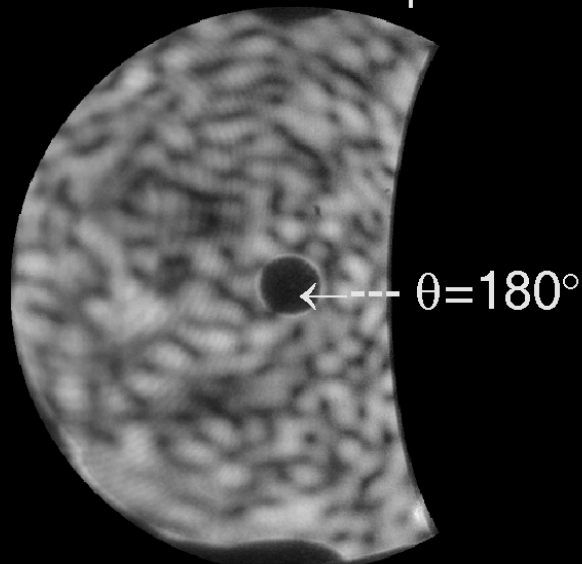
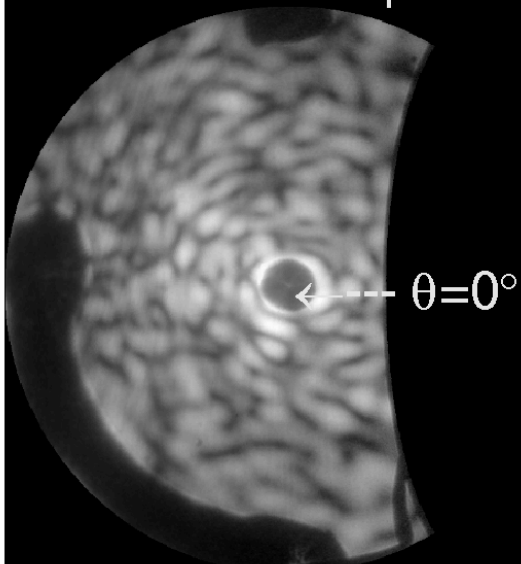
$\theta = 90^\circ$

$\theta = 0^\circ$



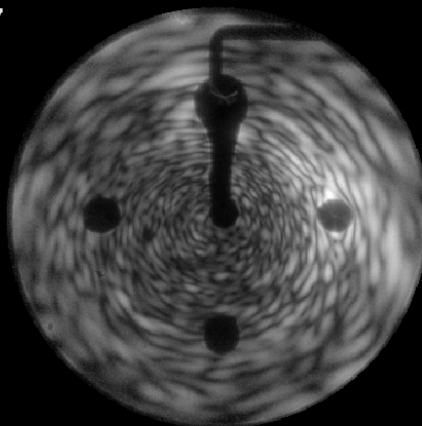
Forward Hemisphere

Backward Hemisphere



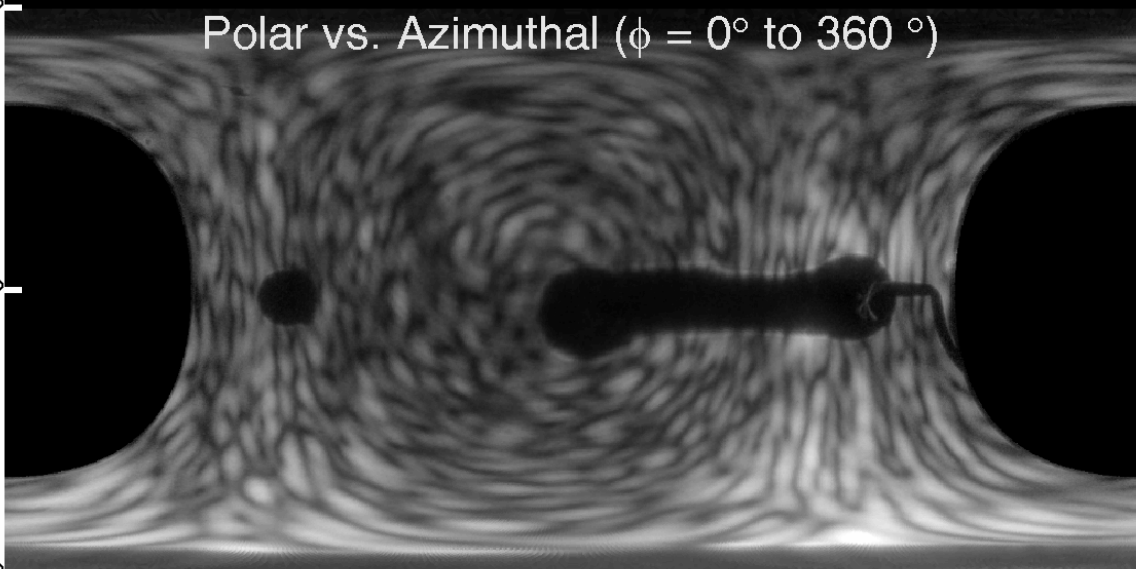
Ambient4__5035
Scattered Intensity: 7.0e+007

Raw Data



$\theta = 180^\circ$

Polar vs. Azimuthal ($\phi = 0^\circ$ to 360°)

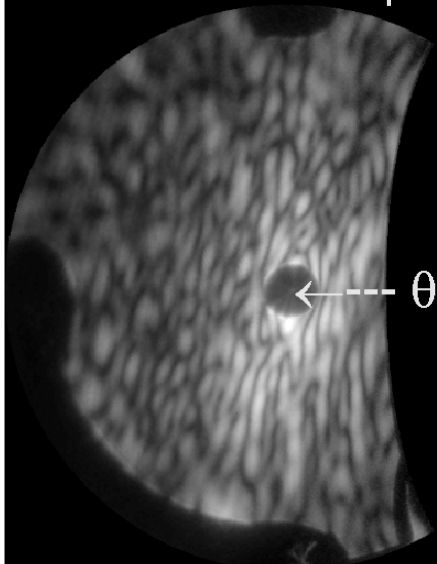


$\theta = 90^\circ$

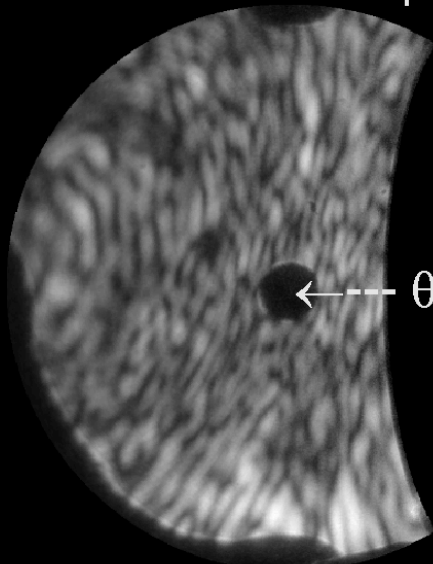
$\theta = 0^\circ$

Forward Hemisphere

Backward Hemisphere



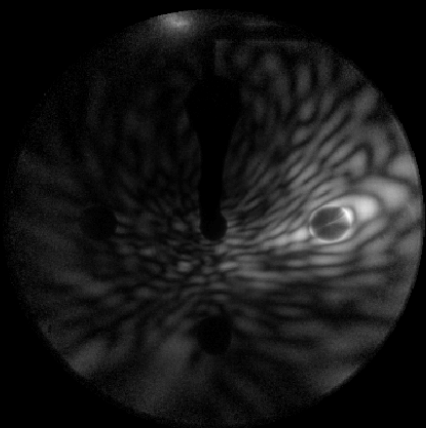
$\leftarrow \theta = 0^\circ$



$\leftarrow \theta = 180^\circ$

Ambient4__5034
Scattered Intensity: 1.9e+007

Raw Data



$\theta = 180^\circ$

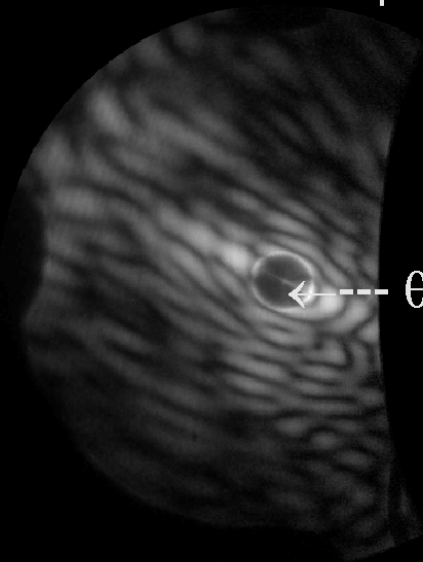
Polar vs. Azimuthal ($\phi = 0^\circ$ to 360°)

$\theta = 90^\circ$

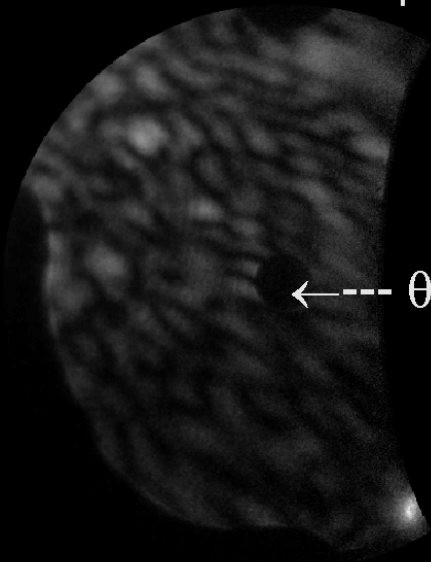
$\theta = 0^\circ$

Forward Hemisphere

Backward Hemisphere



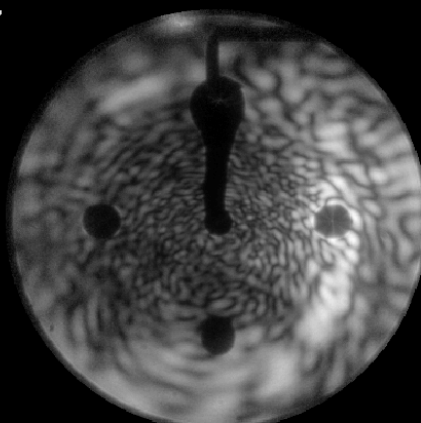
\leftarrow --- $\theta = 0^\circ$



\leftarrow --- $\theta = 180^\circ$

Ambient4__5033
Scattered Intensity: 7.6e+007

Raw Data

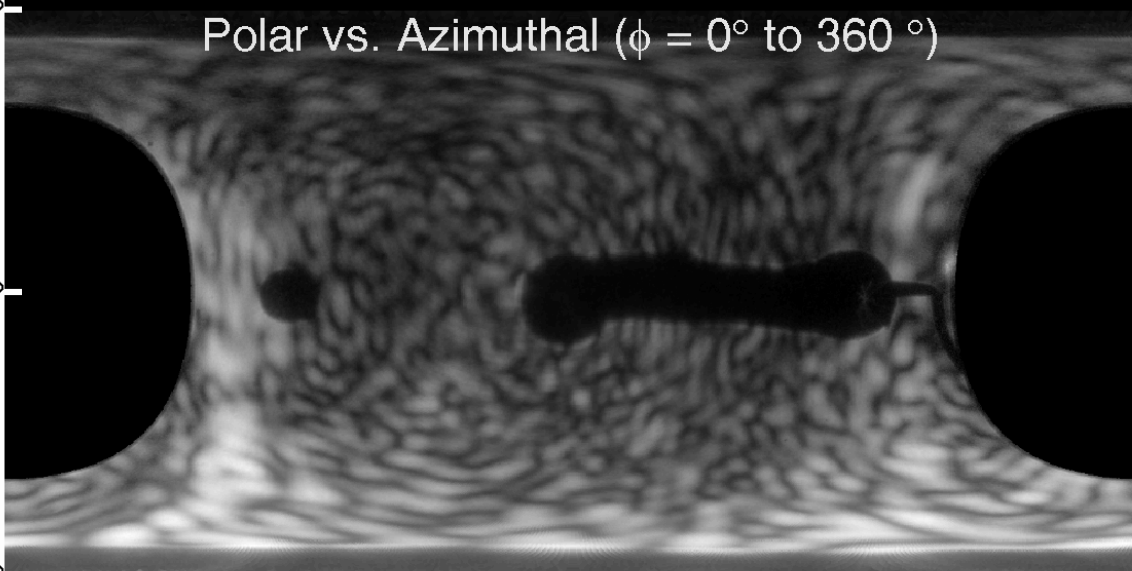


$\theta = 180^\circ$

Polar vs. Azimuthal ($\phi = 0^\circ$ to 360°)

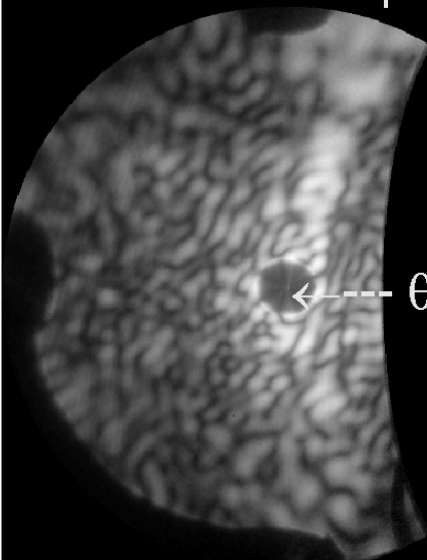
$\theta = 90^\circ$

$\theta = 0^\circ$

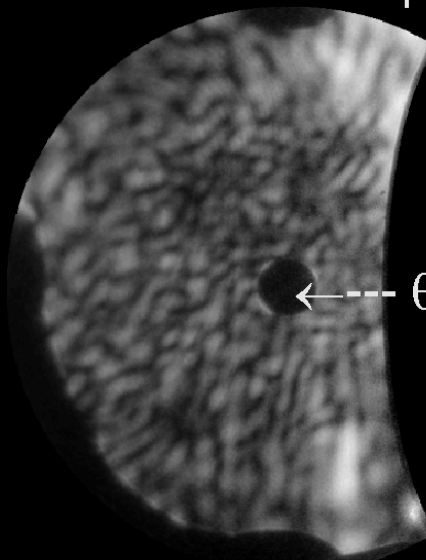


Forward Hemisphere

Backward Hemisphere



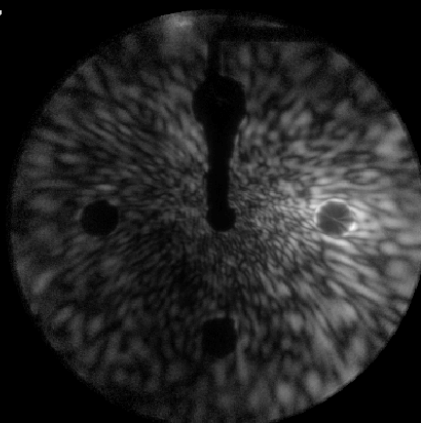
$\leftarrow \theta = 0^\circ$



$\leftarrow \theta = 180^\circ$

Ambient4__5032
Scattered Intensity: 2.6e+007

Raw Data

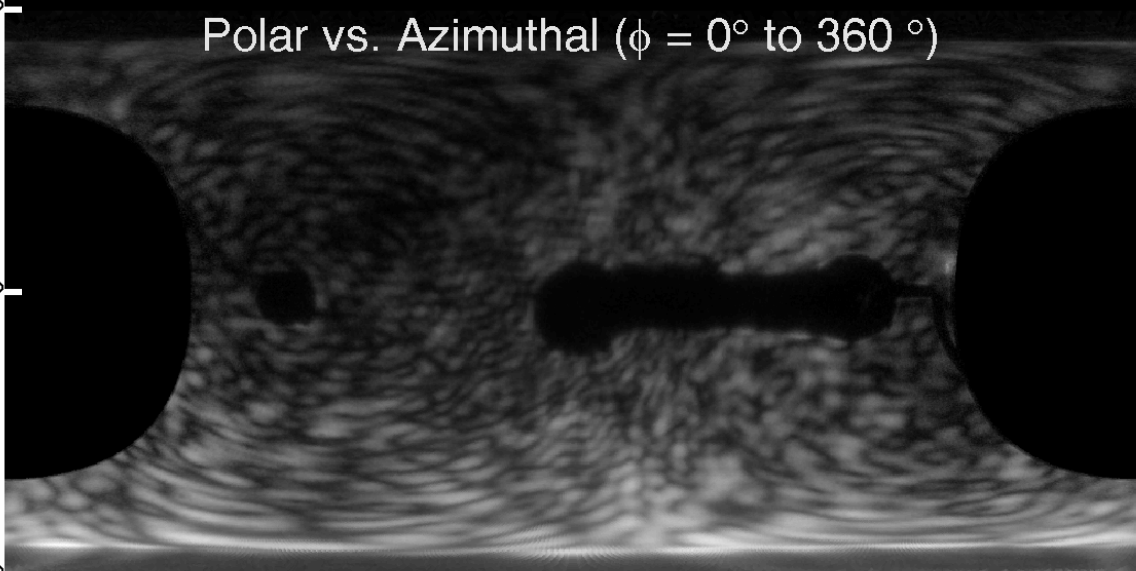


$\theta = 180^\circ$

Polar vs. Azimuthal ($\phi = 0^\circ$ to 360°)

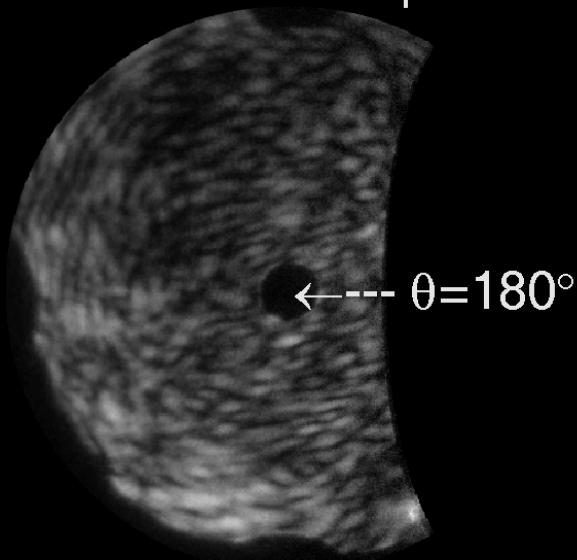
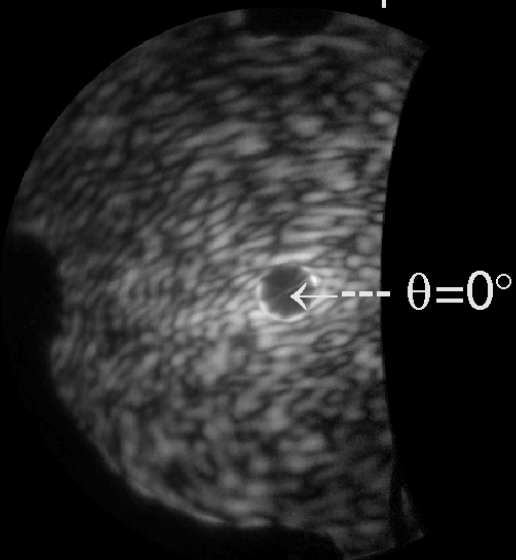
$\theta = 90^\circ$

$\theta = 0^\circ$



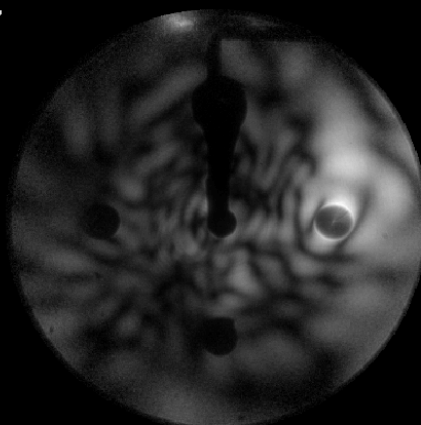
Forward Hemisphere

Backward Hemisphere



Ambient4__5031
Scattered Intensity: 3.1e+007

Raw Data

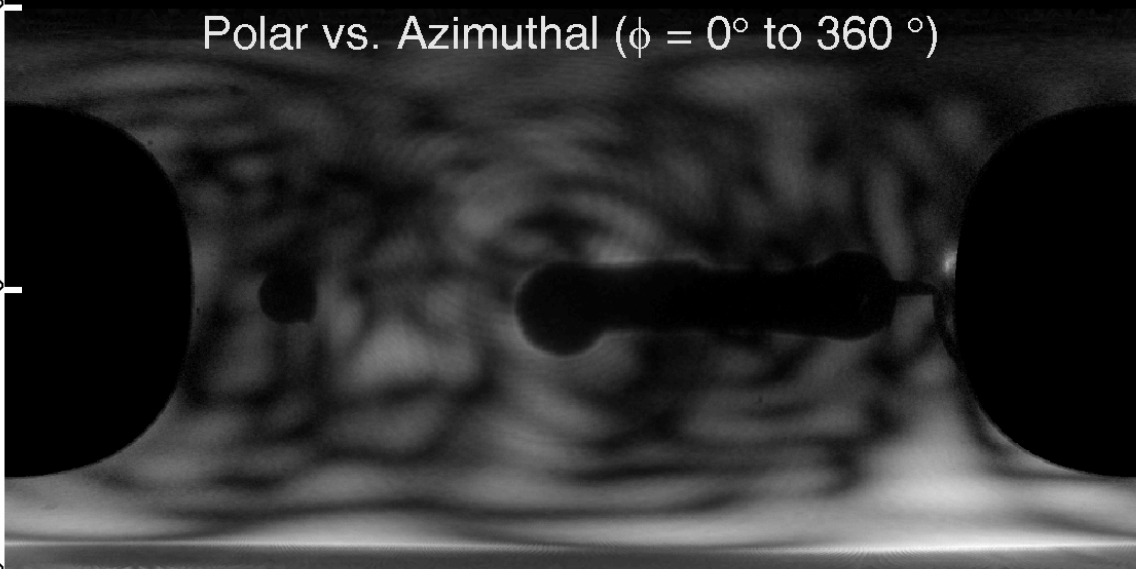


$\theta = 180^\circ$

Polar vs. Azimuthal ($\phi = 0^\circ$ to 360°)

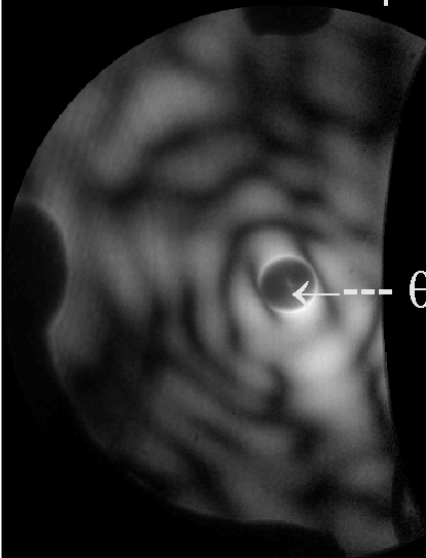
$\theta = 90^\circ$

$\theta = 0^\circ$

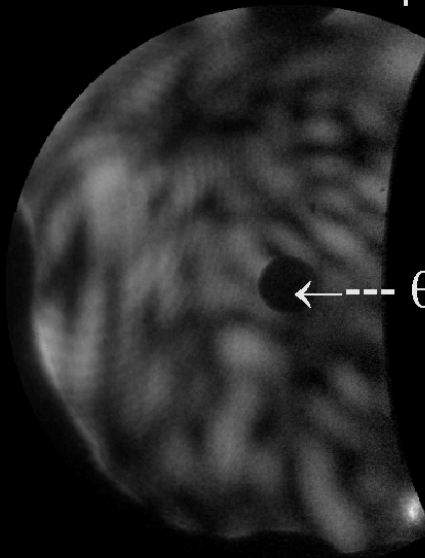


Forward Hemisphere

Backward Hemisphere



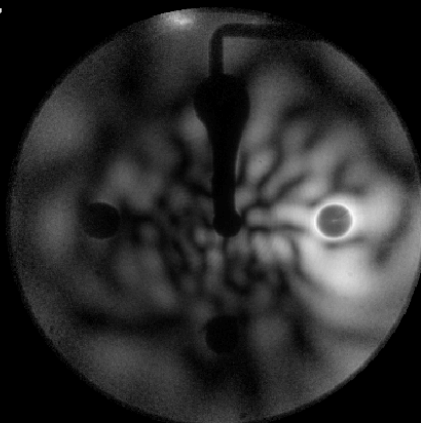
$\theta = 0^\circ$



$\theta = 180^\circ$

Ambient4__5030
Scattered Intensity: 2.9e+007

Raw Data



$\theta = 180^\circ$

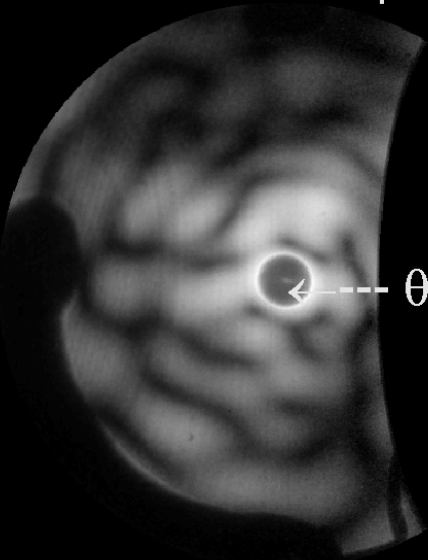
Polar vs. Azimuthal ($\phi = 0^\circ$ to 360°)

$\theta = 90^\circ$

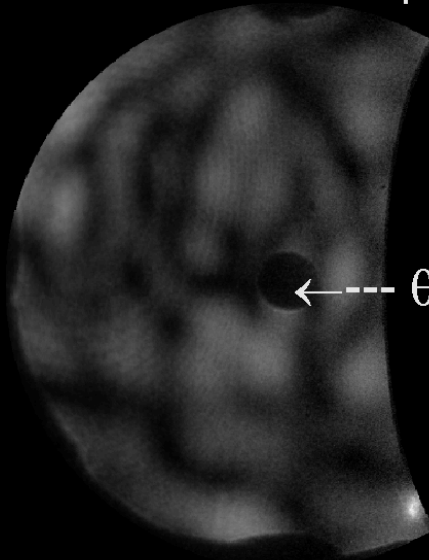
$\theta = 0^\circ$

Forward Hemisphere

Backward Hemisphere



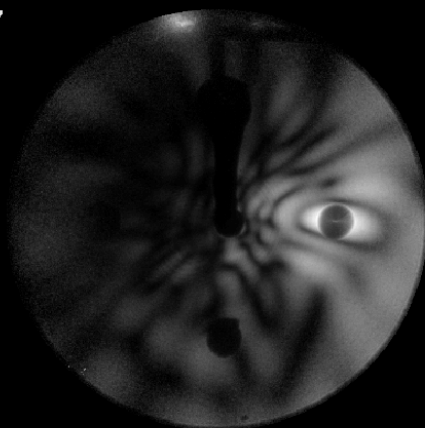
$\theta = 0^\circ$



$\theta = 180^\circ$

Ambient4__5029
Scattered Intensity: 1.9e+007

Raw Data



$\theta = 180^\circ$

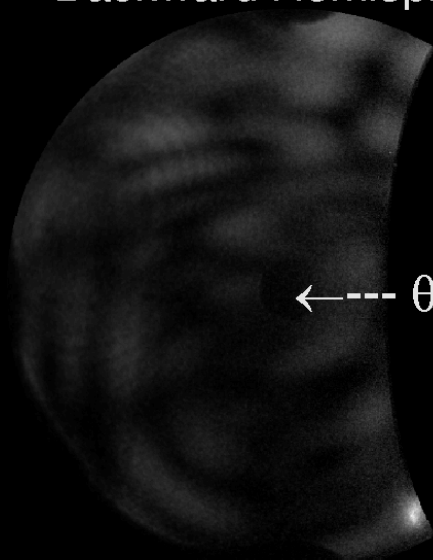
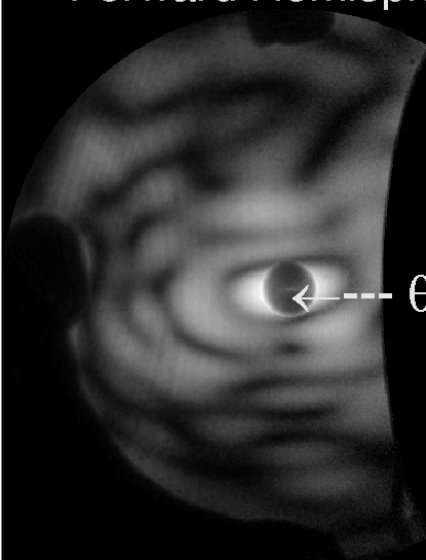
Polar vs. Azimuthal ($\phi = 0^\circ$ to 360°)

$\theta = 90^\circ$

$\theta = 0^\circ$

Forward Hemisphere

Backward Hemisphere



Ambient4__5028
Scattered Intensity: 4.2e+007

Raw Data

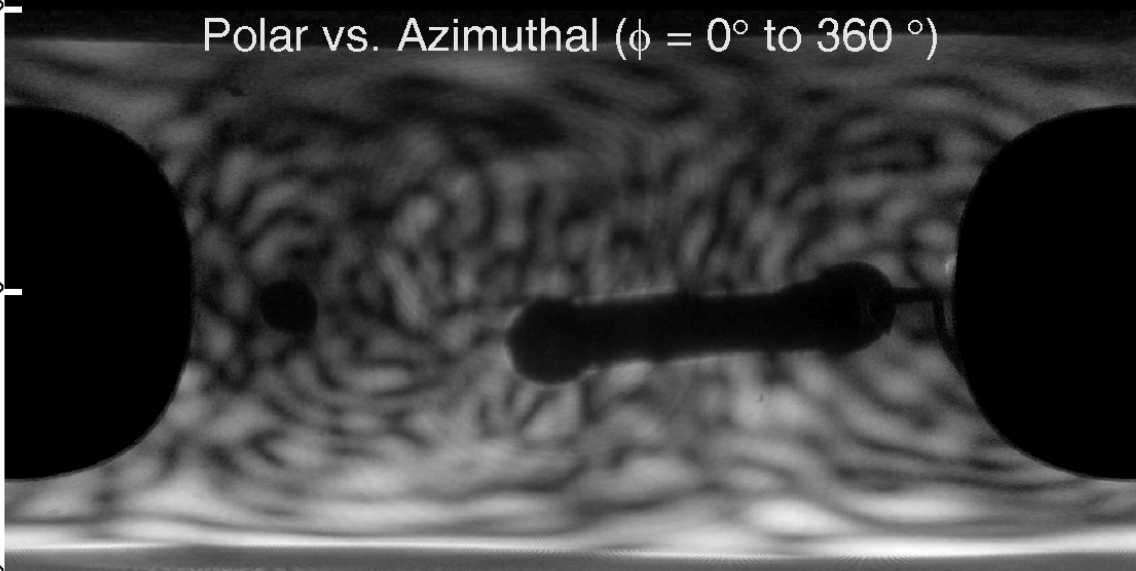


$\theta = 180^\circ$

Polar vs. Azimuthal ($\phi = 0^\circ$ to 360°)

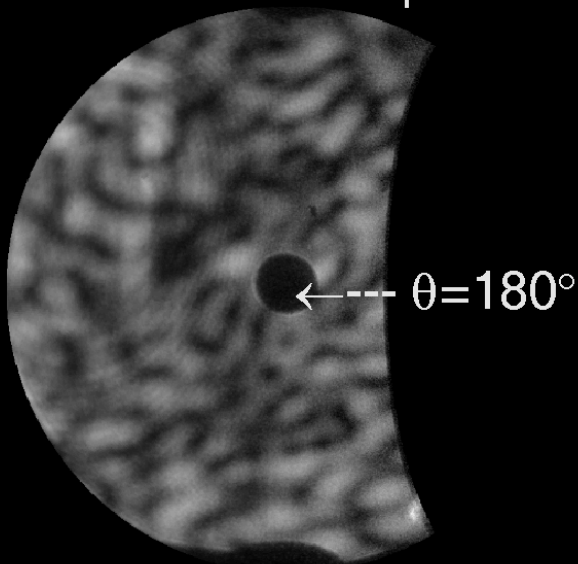
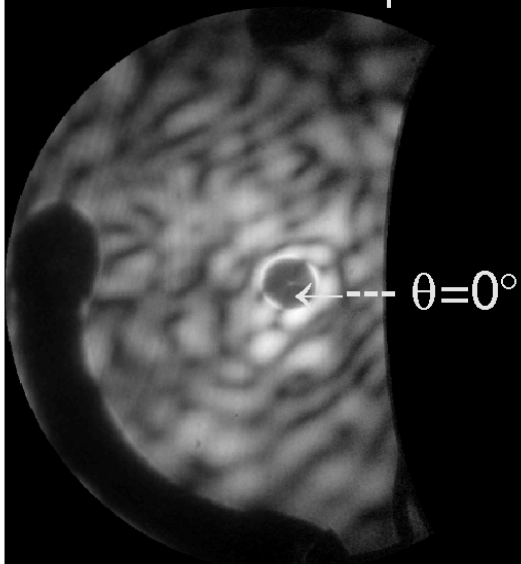
$\theta = 90^\circ$

$\theta = 0^\circ$



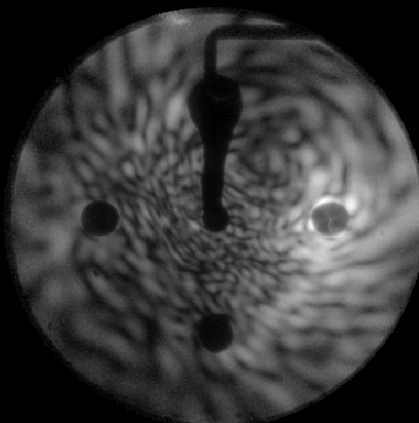
Forward Hemisphere

Backward Hemisphere



Ambient4__5027
Scattered Intensity: 6.2e+007

Raw Data

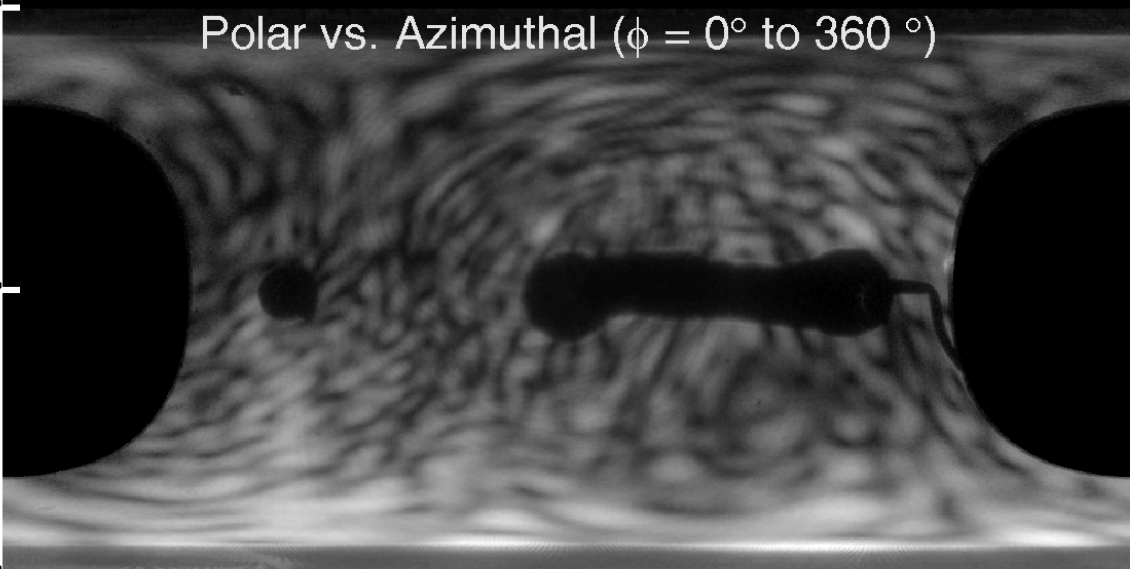


$\theta = 180^\circ$

Polar vs. Azimuthal ($\phi = 0^\circ$ to 360°)

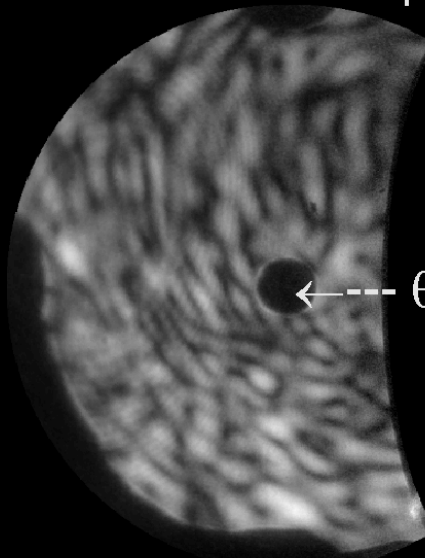
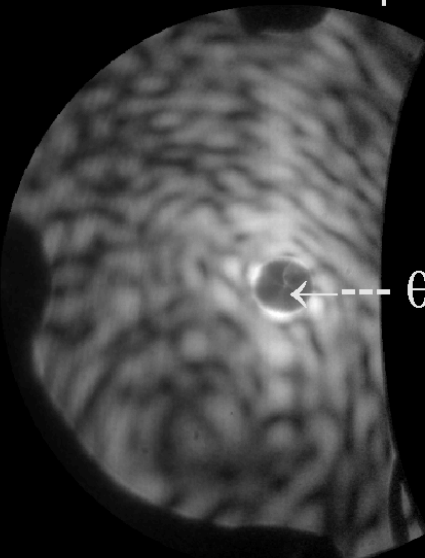
$\theta = 90^\circ$

$\theta = 0^\circ$



Forward Hemisphere

Backward Hemisphere

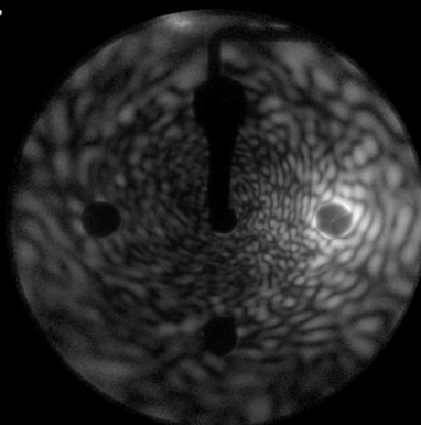


$\leftarrow \theta = 0^\circ$

$\leftarrow \theta = 180^\circ$

Ambient4__5026
Scattered Intensity: 3.4e+007

Raw Data

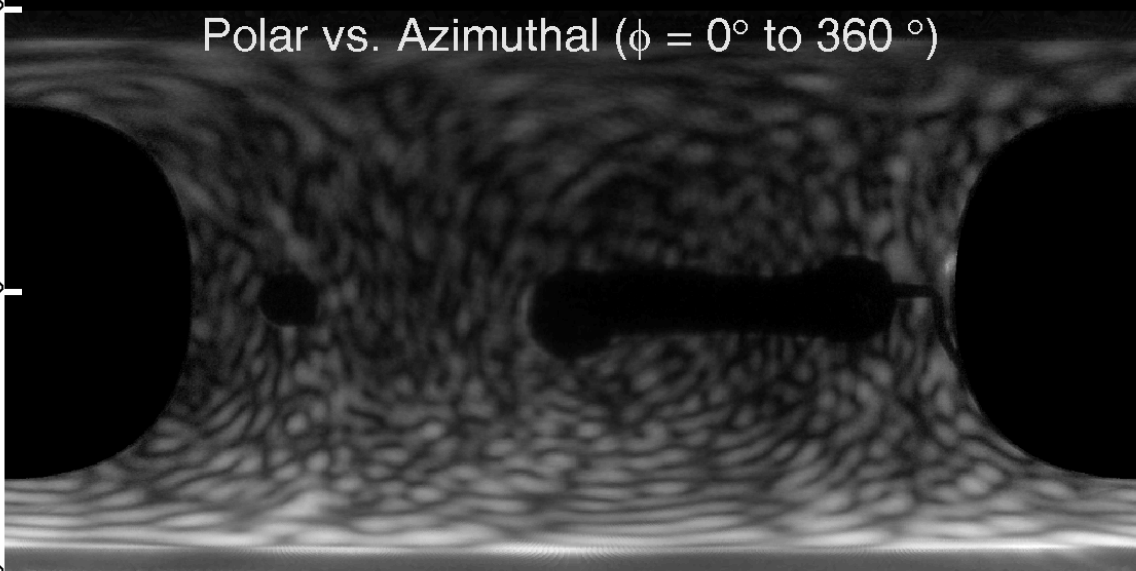


$\theta = 180^\circ$

Polar vs. Azimuthal ($\phi = 0^\circ$ to 360°)

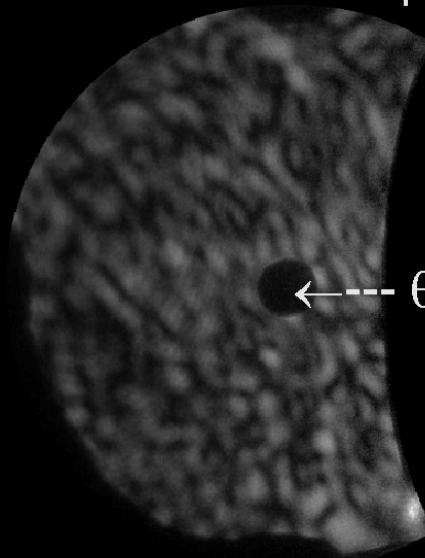
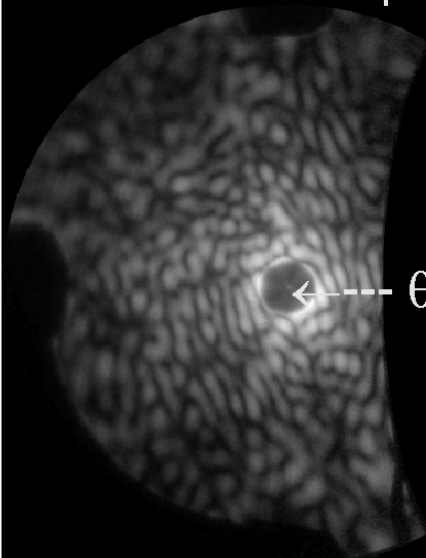
$\theta = 90^\circ$

$\theta = 0^\circ$



Forward Hemisphere

Backward Hemisphere

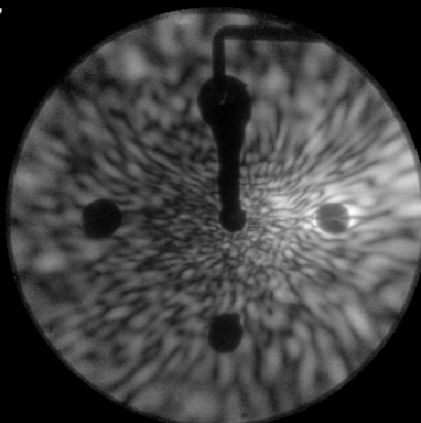


$\leftarrow \theta = 0^\circ$

$\leftarrow \theta = 180^\circ$

Ambient4__5025
Scattered Intensity: 8.0e+007

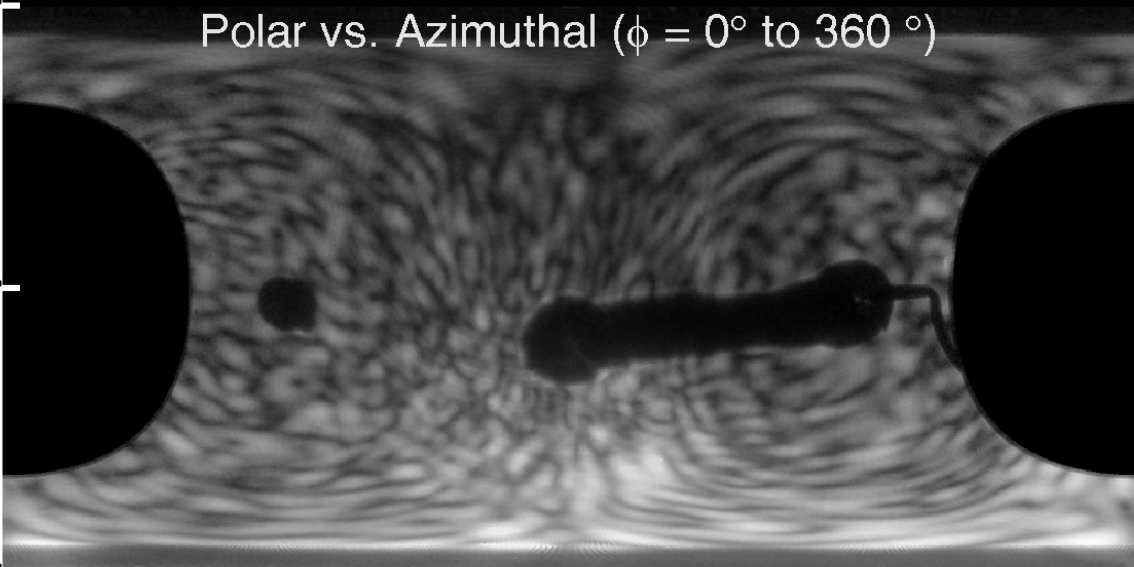
Raw Data



$\theta = 180^\circ$

Polar vs. Azimuthal ($\phi = 0^\circ$ to 360°)

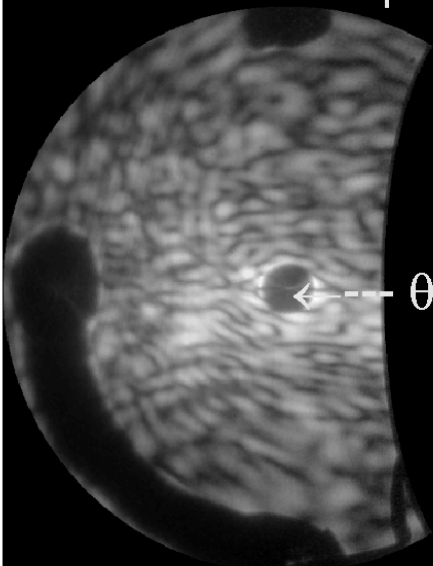
$\theta = 90^\circ$



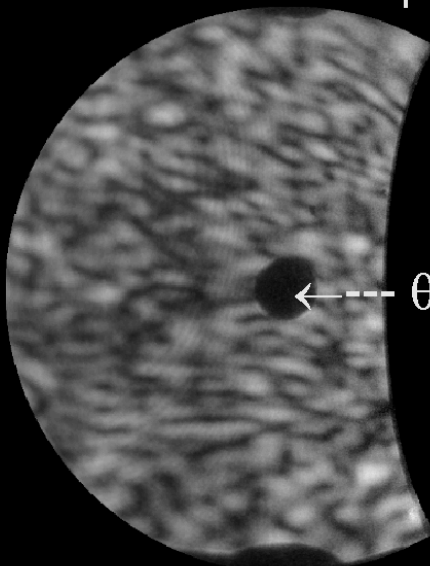
$\theta = 0^\circ$

Forward Hemisphere

Backward Hemisphere



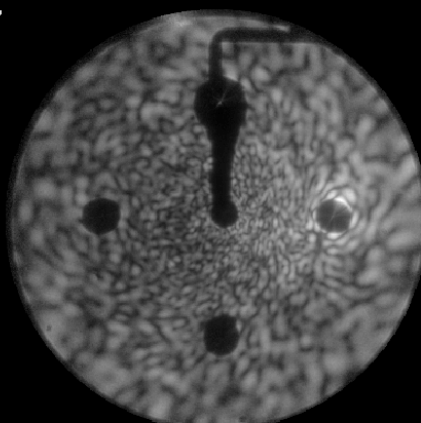
$\theta = 0^\circ$



$\theta = 180^\circ$

Ambient4__5024
Scattered Intensity: 7.5e+007

Raw Data

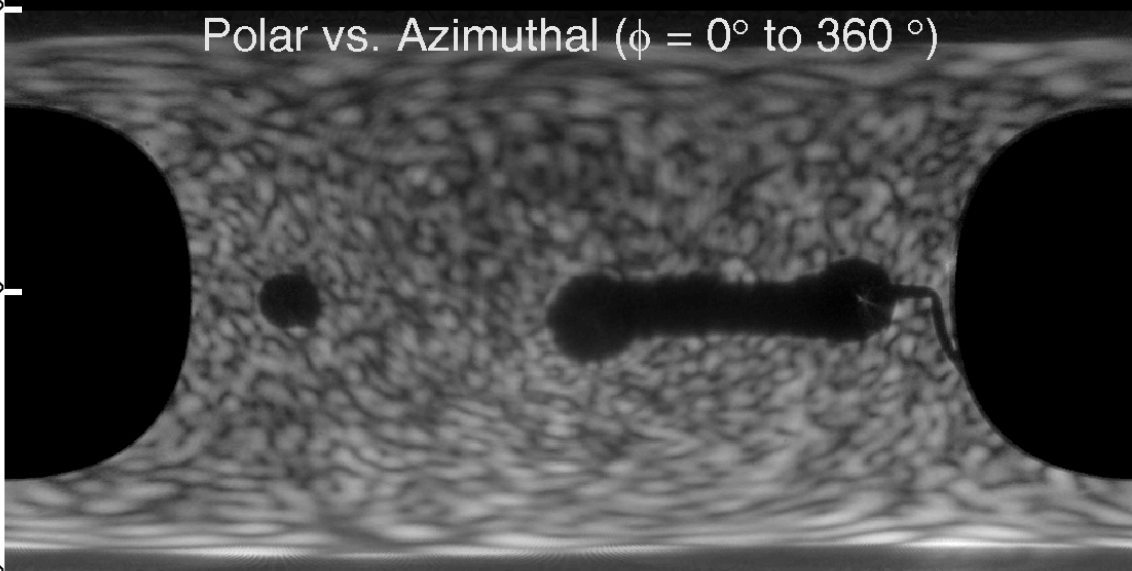


$\theta = 180^\circ$

Polar vs. Azimuthal ($\phi = 0^\circ$ to 360°)

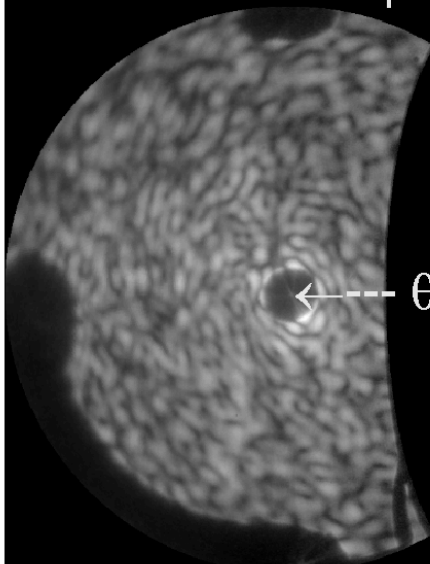
$\theta = 90^\circ$

$\theta = 0^\circ$

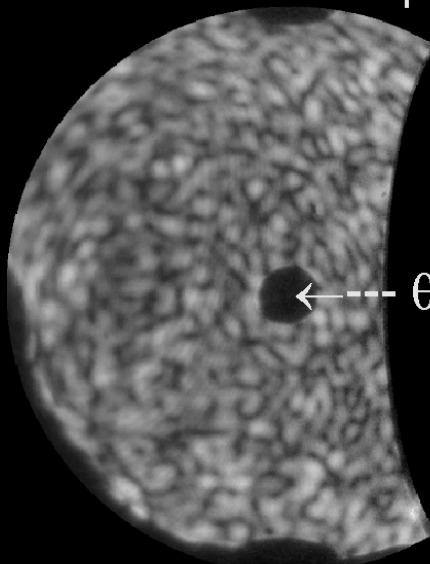


Forward Hemisphere

Backward Hemisphere



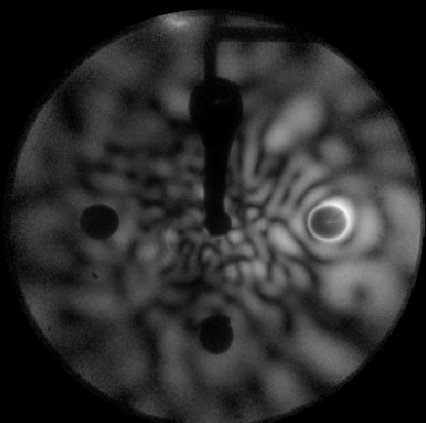
$\leftarrow \theta = 0^\circ$



$\leftarrow \theta = 180^\circ$

Ambient4__5023
Scattered Intensity: 3.0e+007

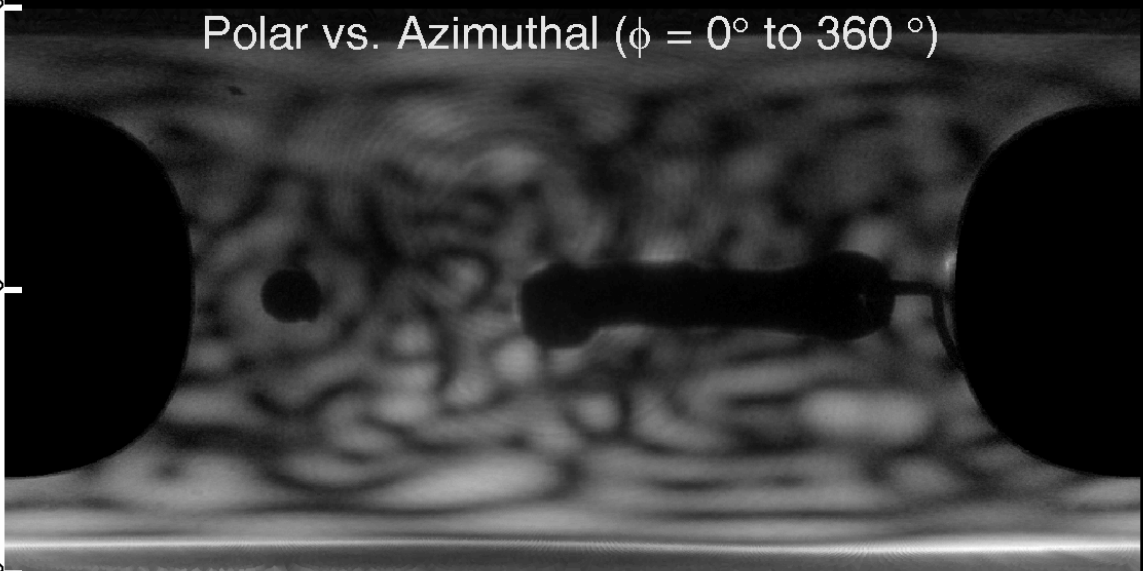
Raw Data



$\theta = 180^\circ$

Polar vs. Azimuthal ($\phi = 0^\circ$ to 360°)

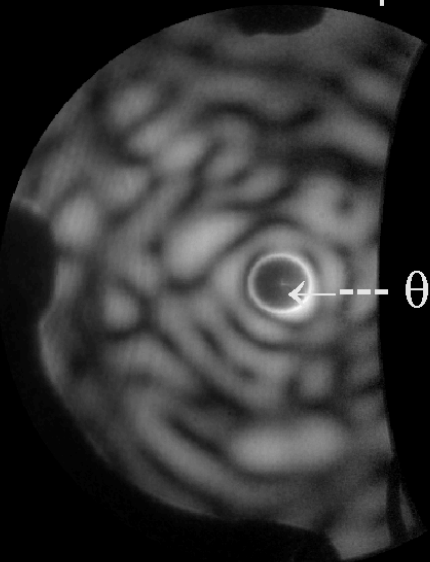
$\theta = 90^\circ$



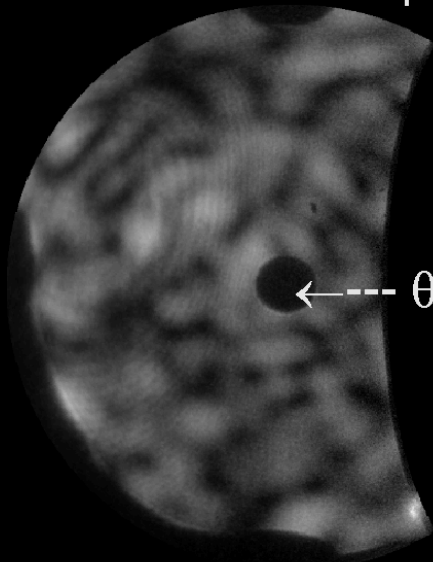
$\theta = 0^\circ$

Forward Hemisphere

Backward Hemisphere



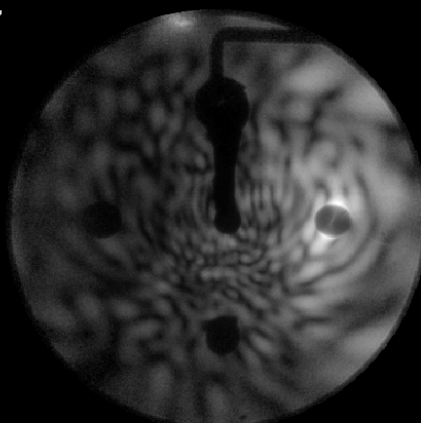
$\theta = 0^\circ$



$\theta = 180^\circ$

Ambient4__5022
Scattered Intensity: 4.3e+007

Raw Data

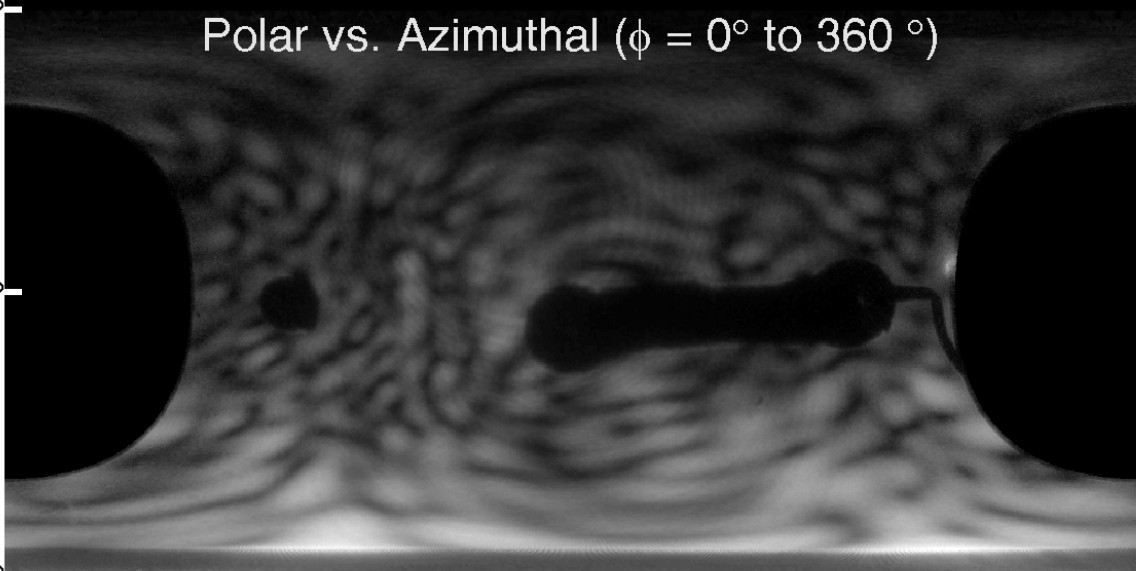


$\theta = 180^\circ$

Polar vs. Azimuthal ($\phi = 0^\circ$ to 360°)

$\theta = 90^\circ$

$\theta = 0^\circ$



Forward Hemisphere

Backward Hemisphere

