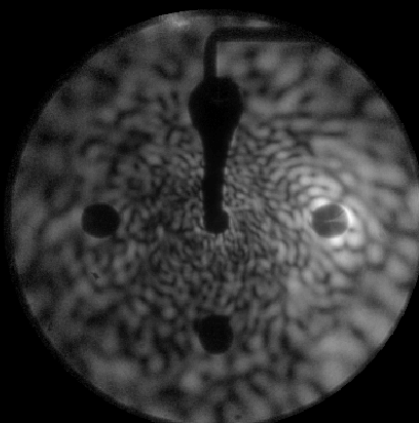


Ambient4__5073
Scattered Intensity: 4.8e+007

Raw Data

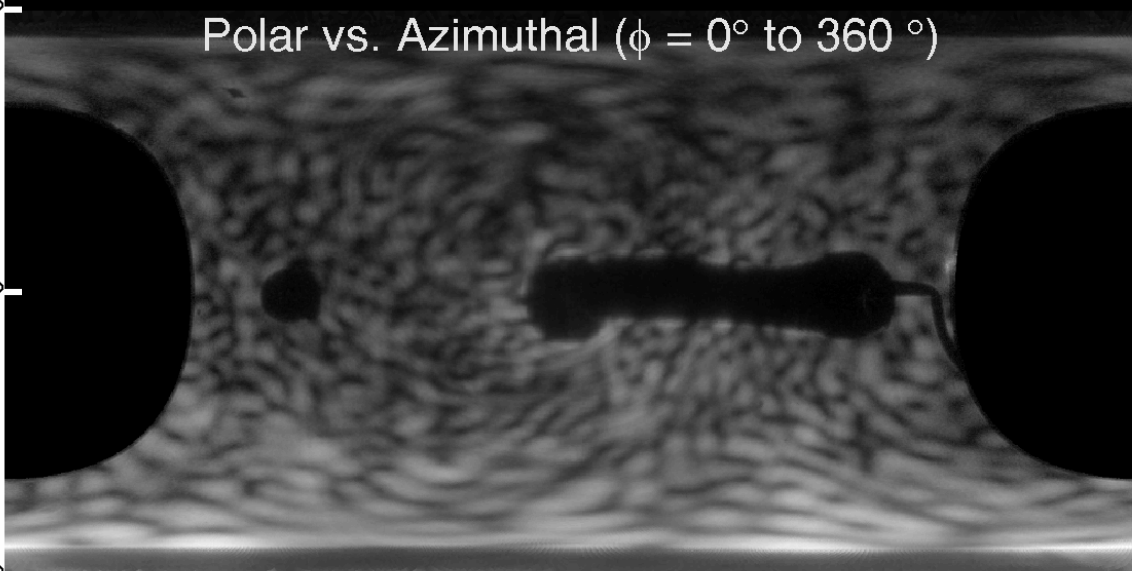


$\theta = 180^\circ$

Polar vs. Azimuthal ($\phi = 0^\circ$ to 360°)

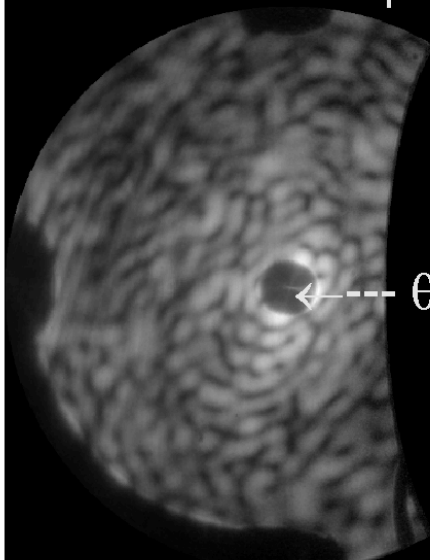
$\theta = 90^\circ$

$\theta = 0^\circ$

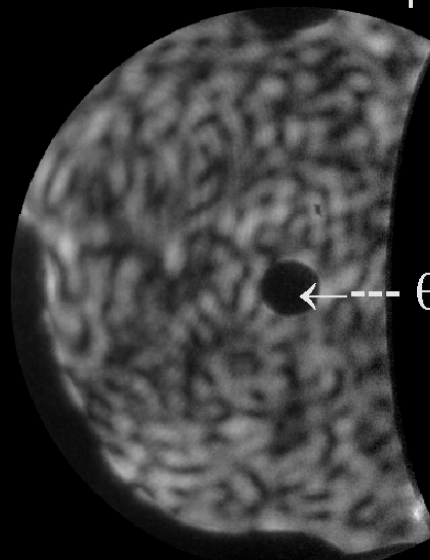


Forward Hemisphere

Backward Hemisphere



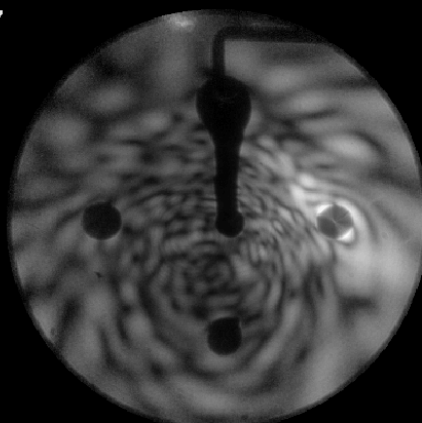
$\leftarrow \theta = 0^\circ$



$\leftarrow \theta = 180^\circ$

Ambient4__5072
Scattered Intensity: 5.8e+007

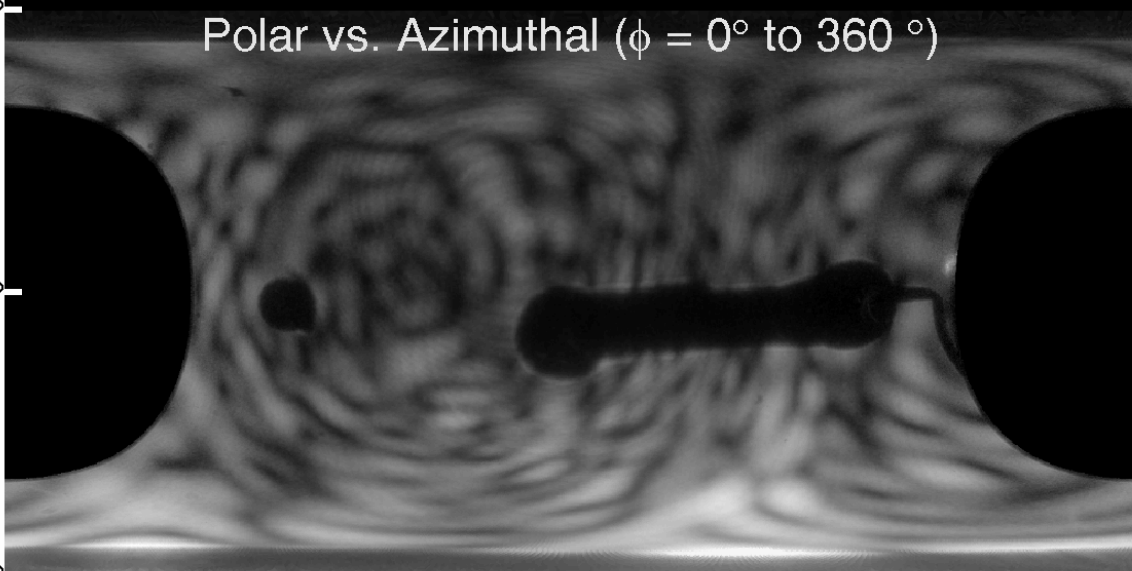
Raw Data



$\theta = 180^\circ$

Polar vs. Azimuthal ($\phi = 0^\circ$ to 360°)

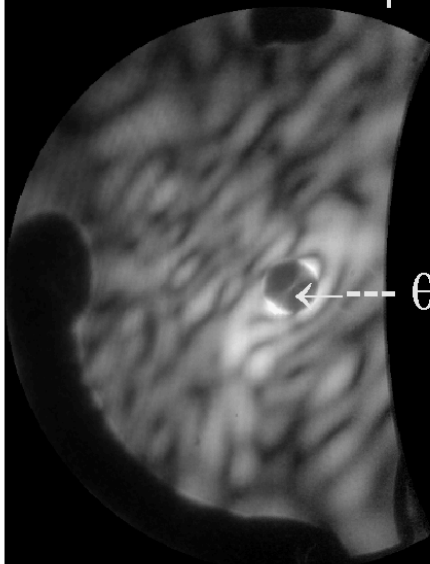
$\theta = 90^\circ$



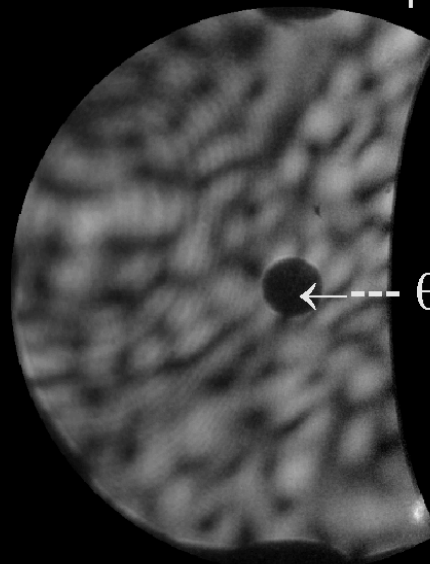
$\theta = 0^\circ$

Forward Hemisphere

Backward Hemisphere



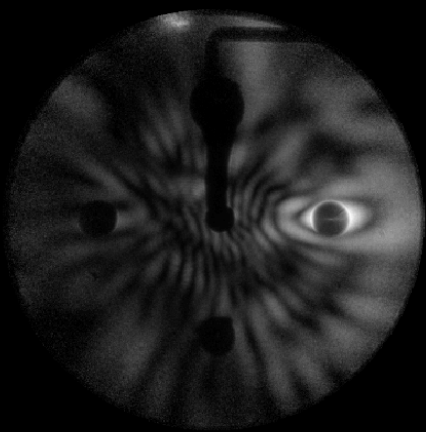
$\theta = 0^\circ$



$\theta = 180^\circ$

Ambient4__5070
Scattered Intensity: 1.0e+007

Raw Data

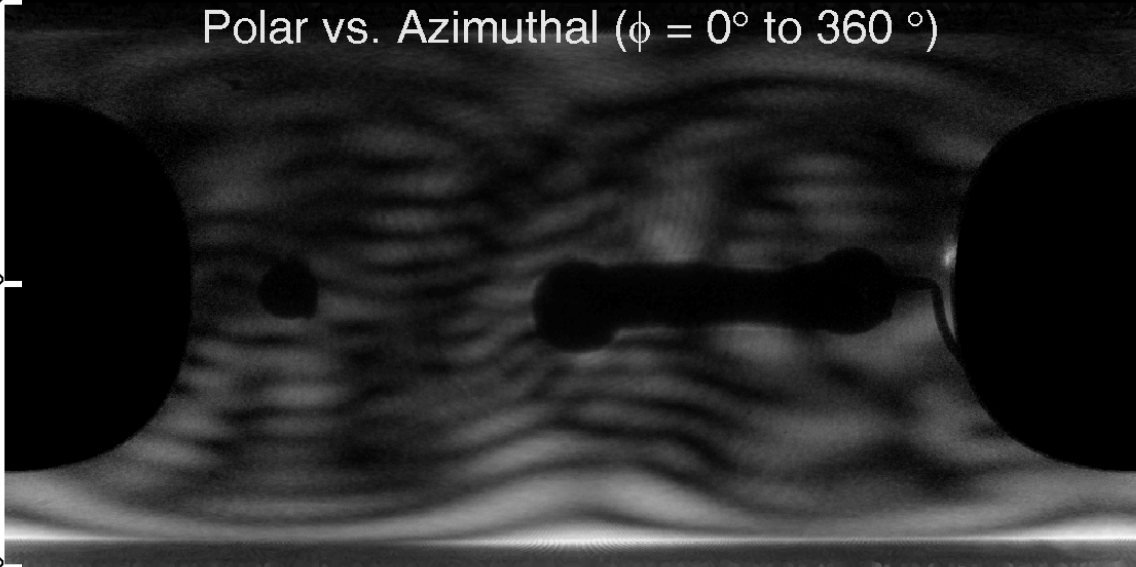


$\theta = 180^\circ$

Polar vs. Azimuthal ($\phi = 0^\circ$ to 360°)

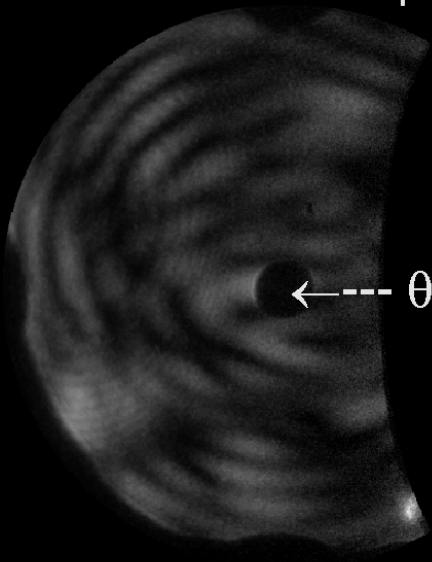
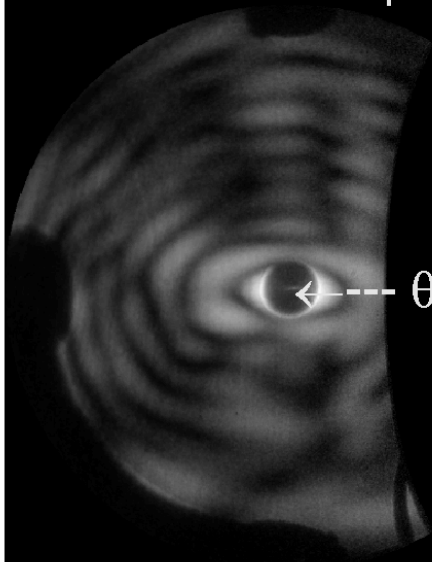
$\theta = 90^\circ$

$\theta = 0^\circ$



Forward Hemisphere

Backward Hemisphere

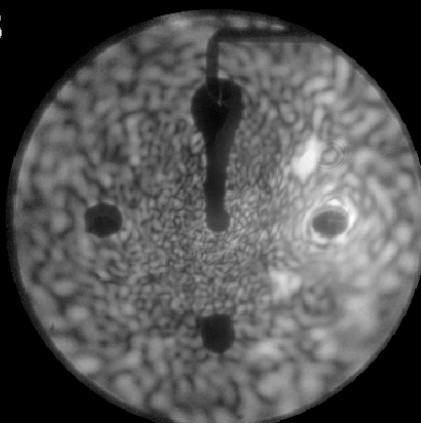


\leftarrow --- $\theta = 0^\circ$

\leftarrow --- $\theta = 180^\circ$

Ambient4__5069
Scattered Intensity: 1.8e+008

Raw Data

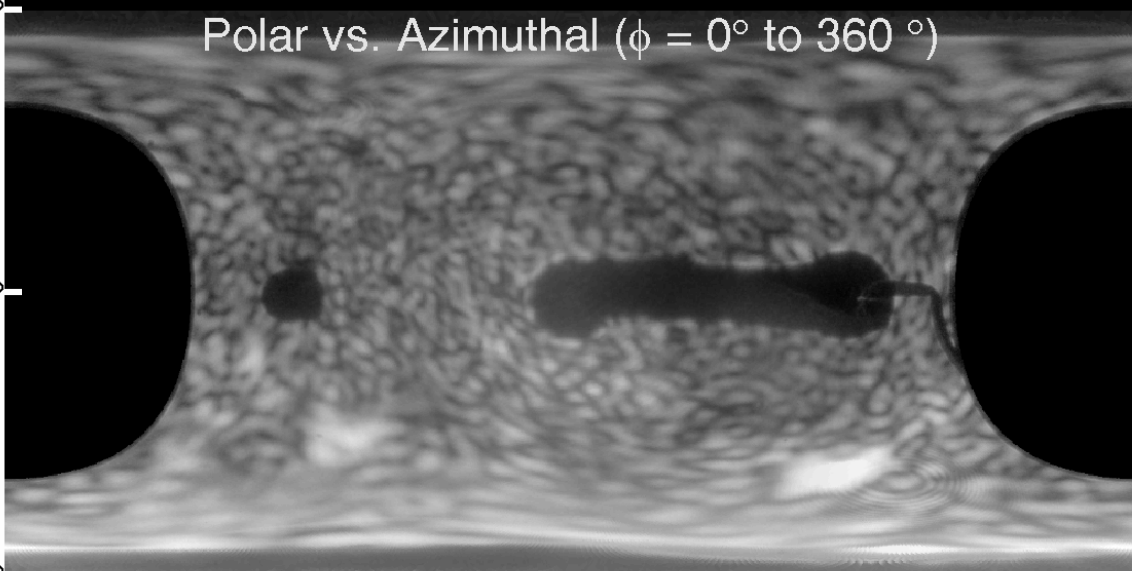


$\theta = 180^\circ$

Polar vs. Azimuthal ($\phi = 0^\circ$ to 360°)

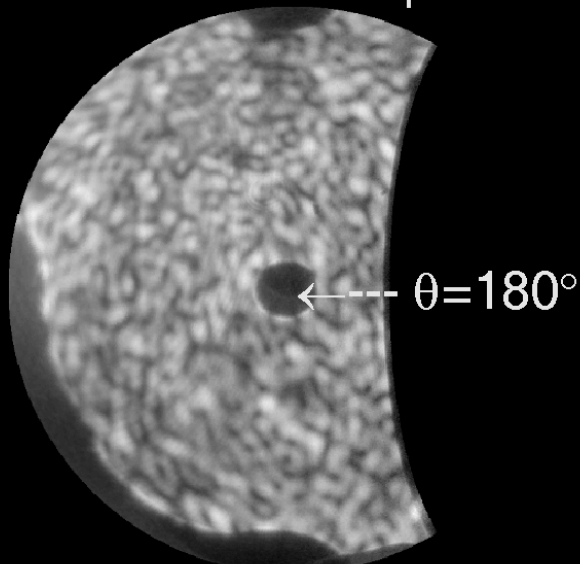
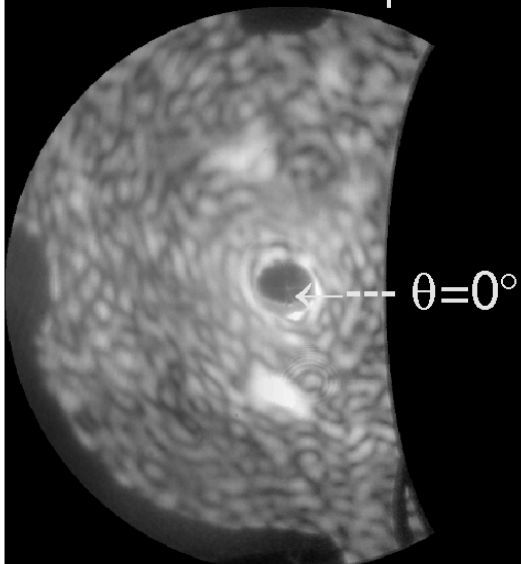
$\theta = 90^\circ$

$\theta = 0^\circ$



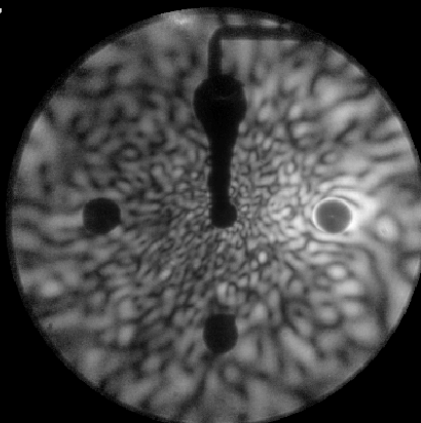
Forward Hemisphere

Backward Hemisphere



Ambient4__5068
Scattered Intensity: 6.2e+007

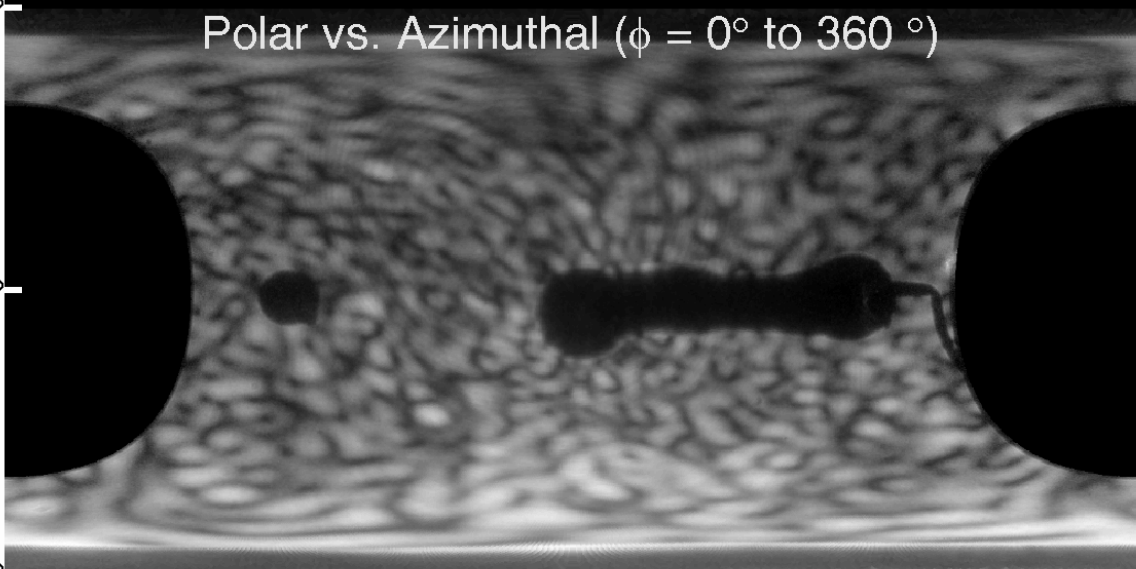
Raw Data



$\theta = 180^\circ$

Polar vs. Azimuthal ($\phi = 0^\circ$ to 360°)

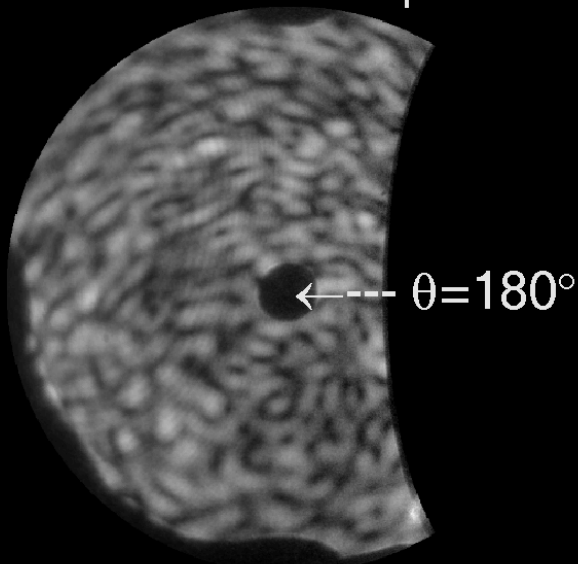
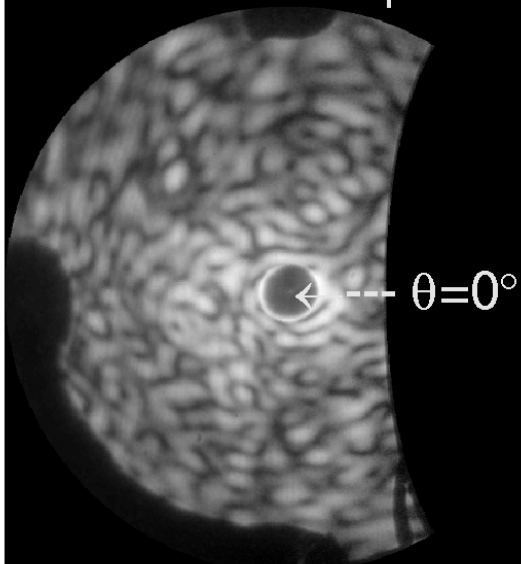
$\theta = 90^\circ$



$\theta = 0^\circ$

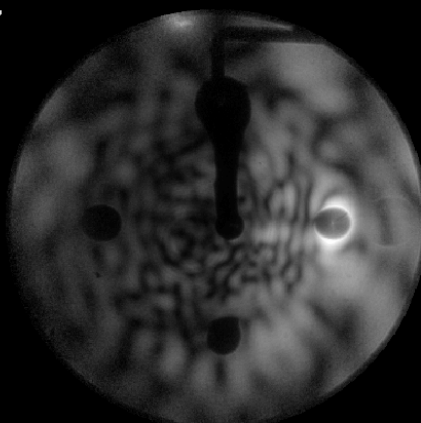
Forward Hemisphere

Backward Hemisphere



Ambient4__5066
Scattered Intensity: 3.9e+007

Raw Data

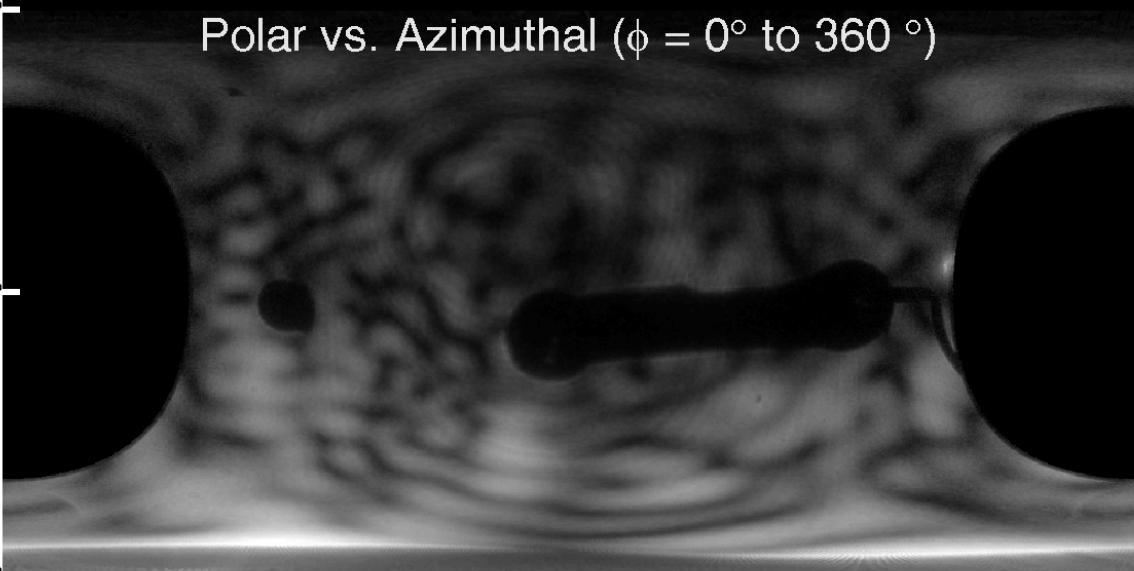


$\theta = 180^\circ$

Polar vs. Azimuthal ($\phi = 0^\circ$ to 360°)

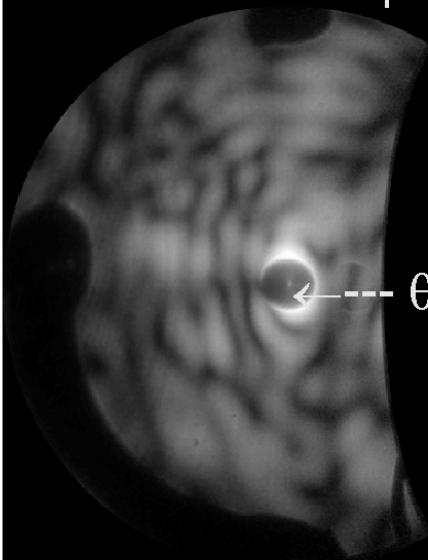
$\theta = 90^\circ$

$\theta = 0^\circ$

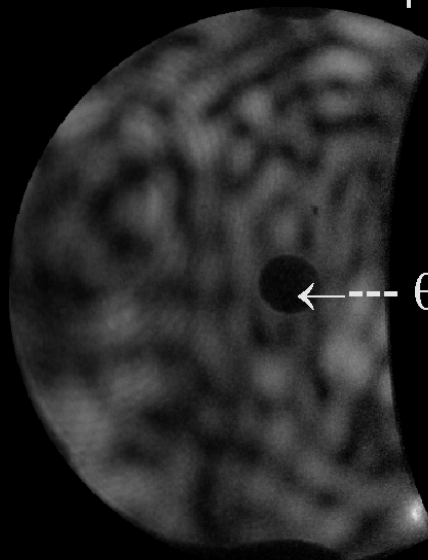


Forward Hemisphere

Backward Hemisphere



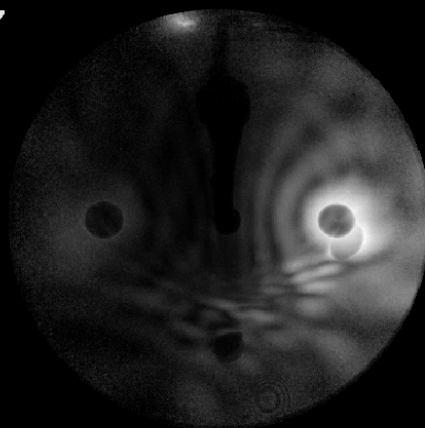
\leftarrow --- $\theta = 0^\circ$



\leftarrow --- $\theta = 180^\circ$

Ambient4__5065
Scattered Intensity: 1.6e+007

Raw Data

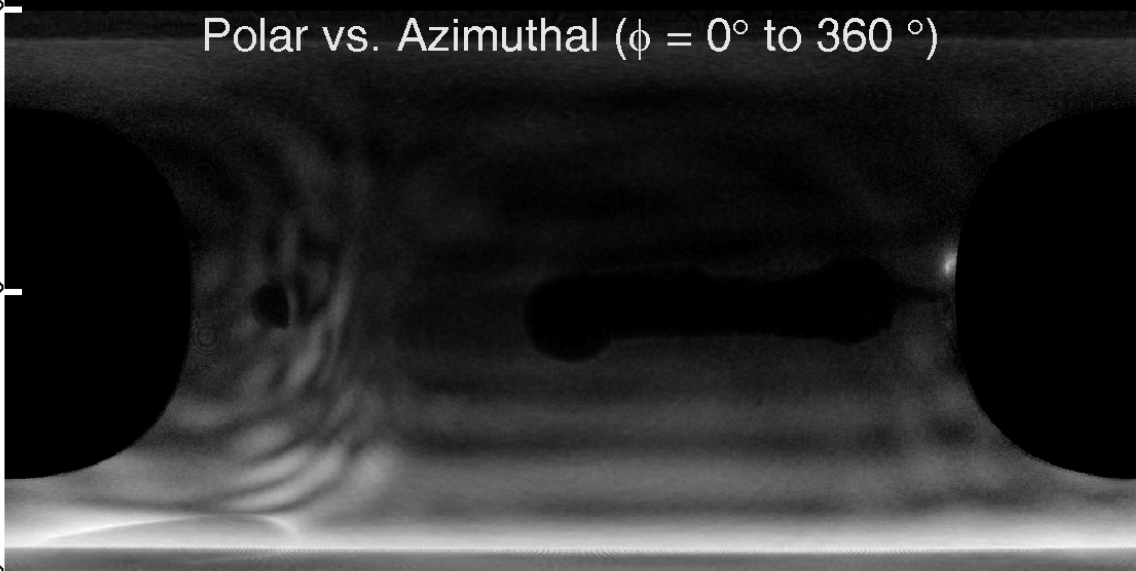


$\theta = 180^\circ$

Polar vs. Azimuthal ($\phi = 0^\circ$ to 360°)

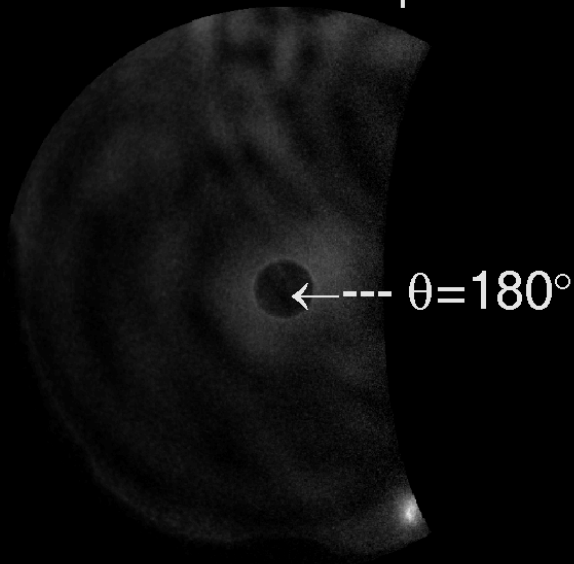
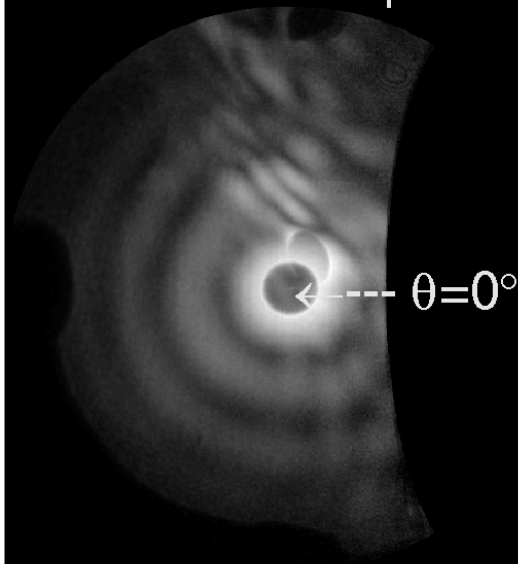
$\theta = 90^\circ$

$\theta = 0^\circ$



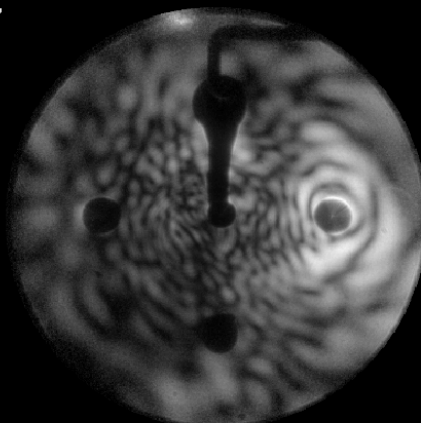
Forward Hemisphere

Backward Hemisphere



Ambient4__5064
Scattered Intensity: 4.2e+007

Raw Data

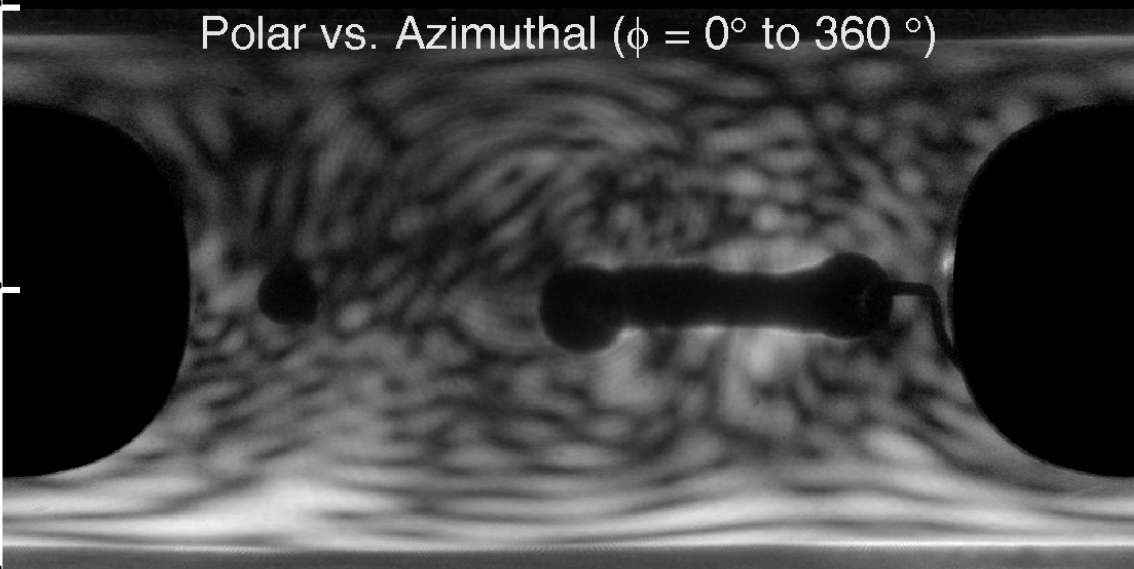


$\theta = 180^\circ$

Polar vs. Azimuthal ($\phi = 0^\circ$ to 360°)

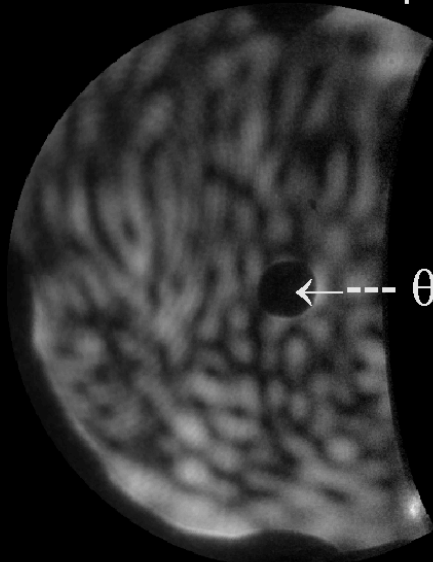
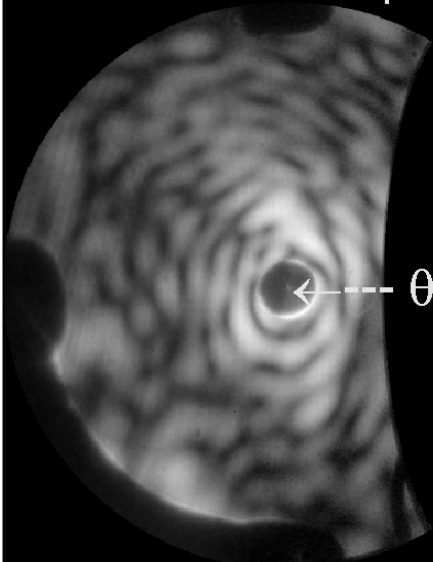
$\theta = 90^\circ$

$\theta = 0^\circ$



Forward Hemisphere

Backward Hemisphere

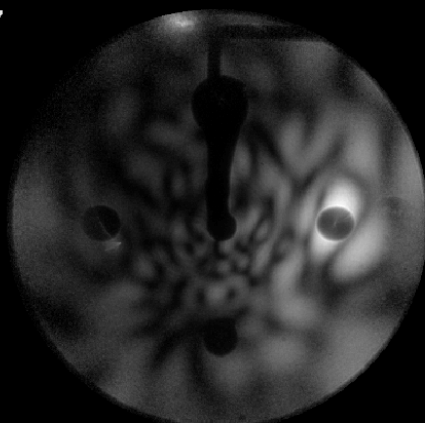


$\theta = 0^\circ$

$\theta = 180^\circ$

Ambient4__5063
Scattered Intensity: 2.3e+007

Raw Data

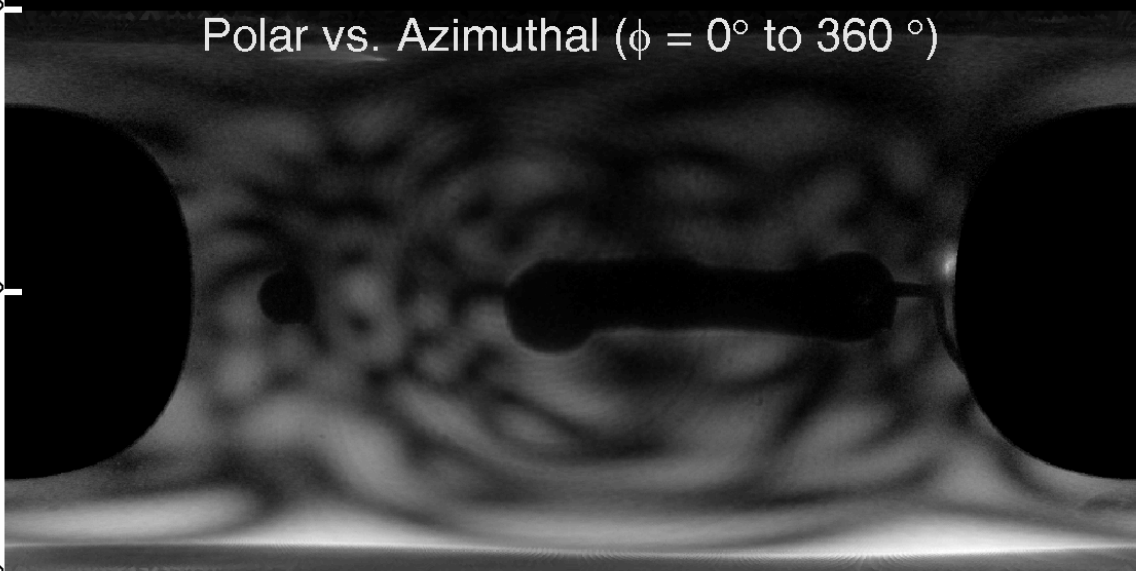


$\theta = 180^\circ$

Polar vs. Azimuthal ($\phi = 0^\circ$ to 360°)

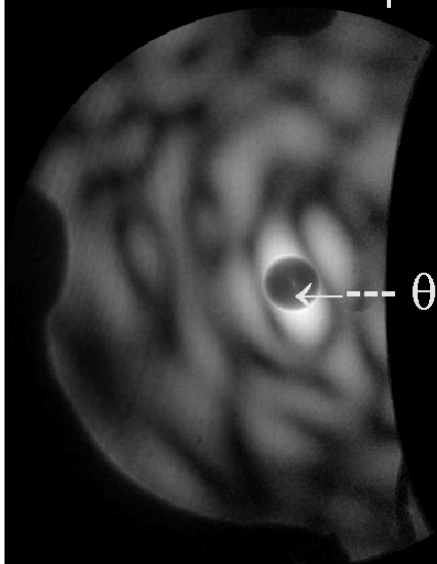
$\theta = 90^\circ$

$\theta = 0^\circ$

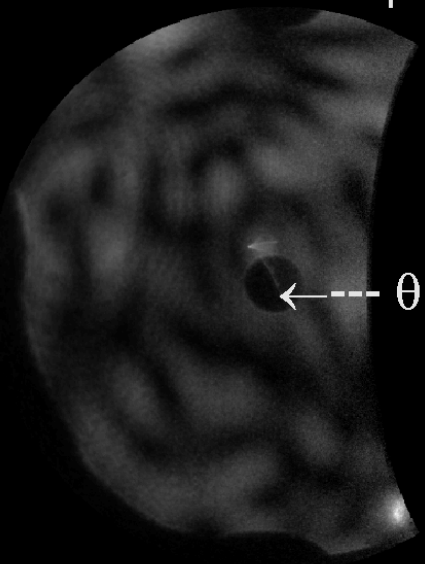


Forward Hemisphere

Backward Hemisphere



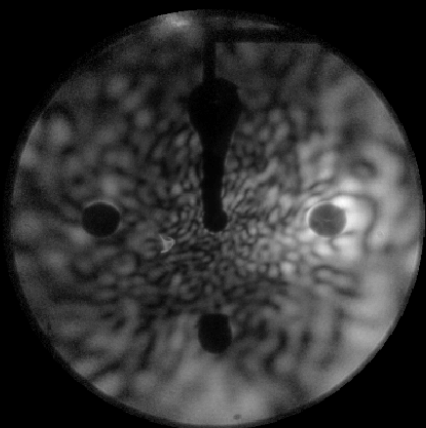
\leftarrow --- $\theta = 0^\circ$



\leftarrow --- $\theta = 180^\circ$

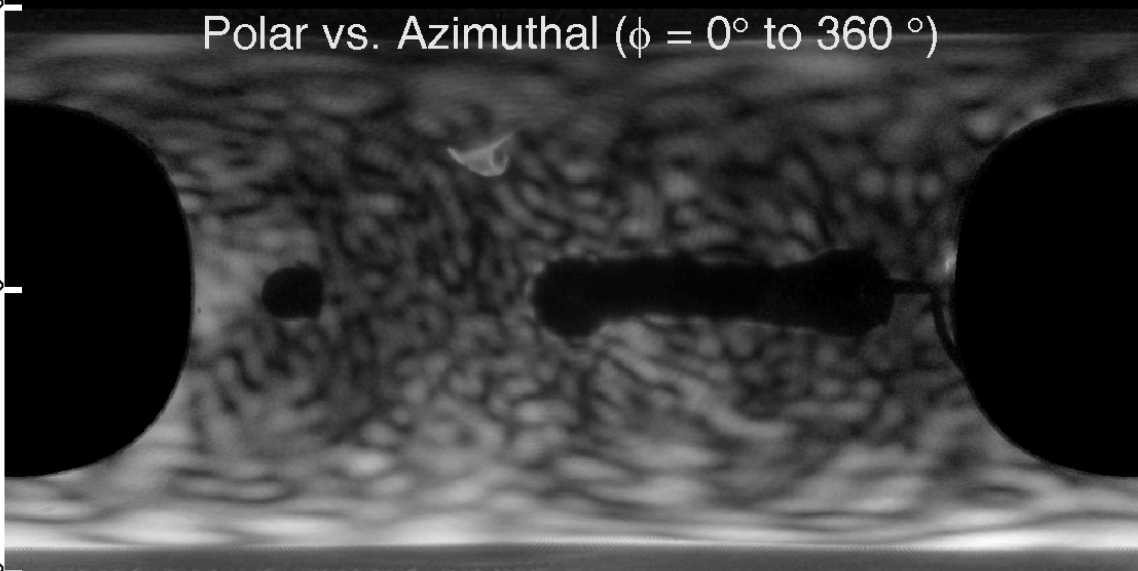
Ambient4__5062
Scattered Intensity: 4.2e+007

Raw Data



$\theta = 180^\circ$

Polar vs. Azimuthal ($\phi = 0^\circ$ to 360°)

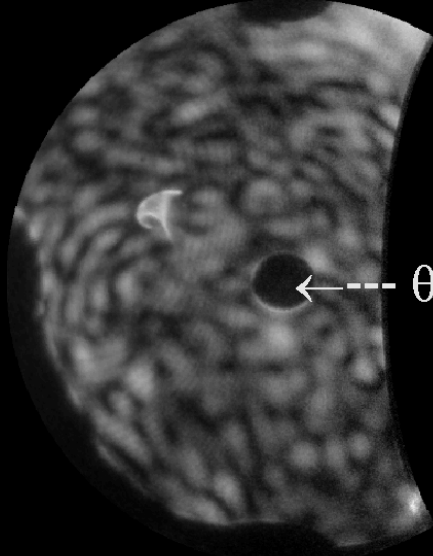
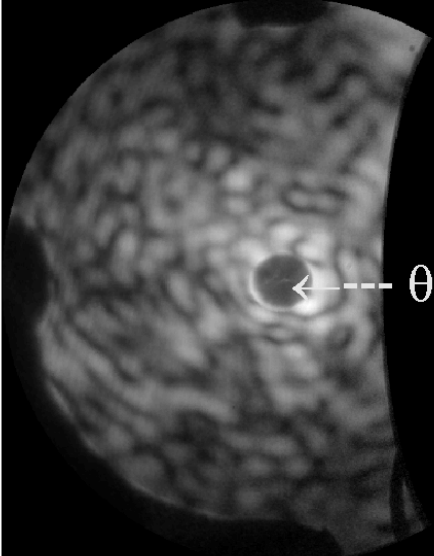


$\theta = 90^\circ$

$\theta = 0^\circ$

Forward Hemisphere

Backward Hemisphere

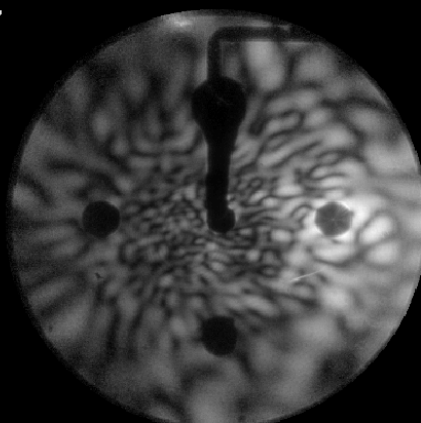


$\theta = 0^\circ$

$\theta = 180^\circ$

Ambient4__5061
Scattered Intensity: 4.9e+007

Raw Data

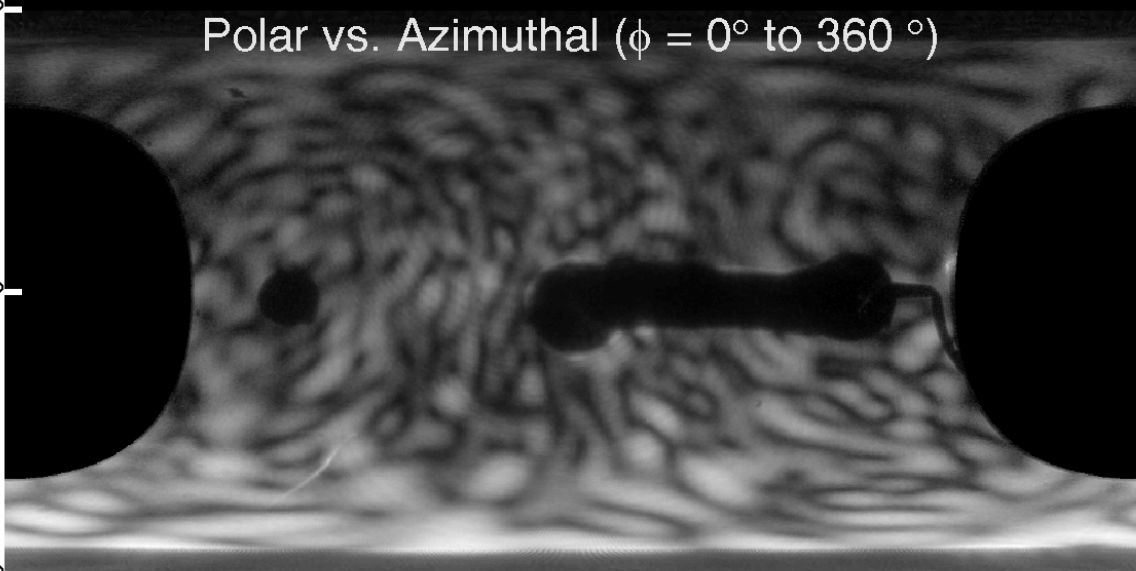


$\theta = 180^\circ$

Polar vs. Azimuthal ($\phi = 0^\circ$ to 360°)

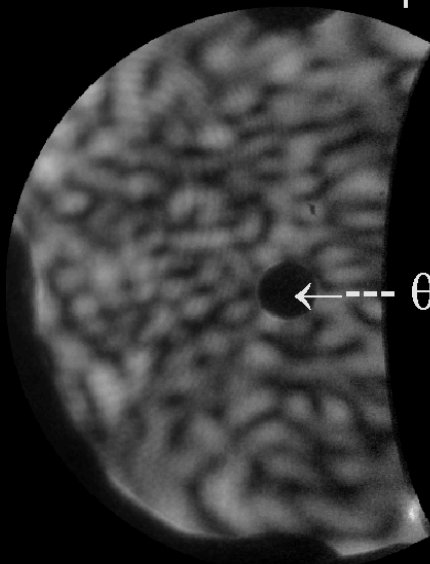
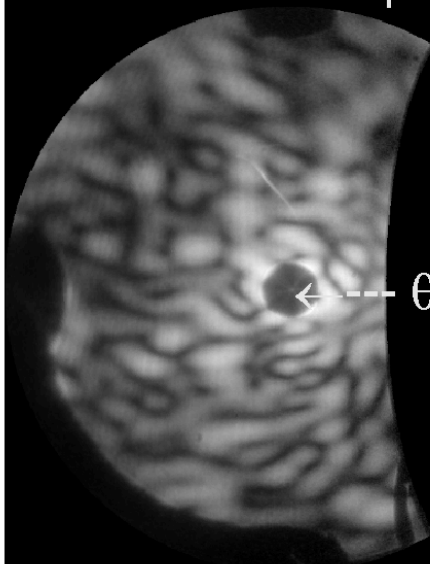
$\theta = 90^\circ$

$\theta = 0^\circ$



Forward Hemisphere

Backward Hemisphere

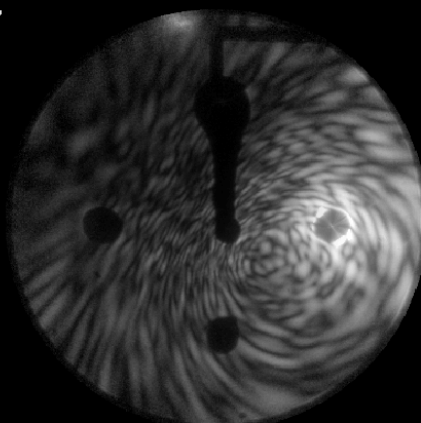


\leftarrow --- $\theta = 0^\circ$

\leftarrow --- $\theta = 180^\circ$

Ambient4__5060
Scattered Intensity: 7.6e+007

Raw Data

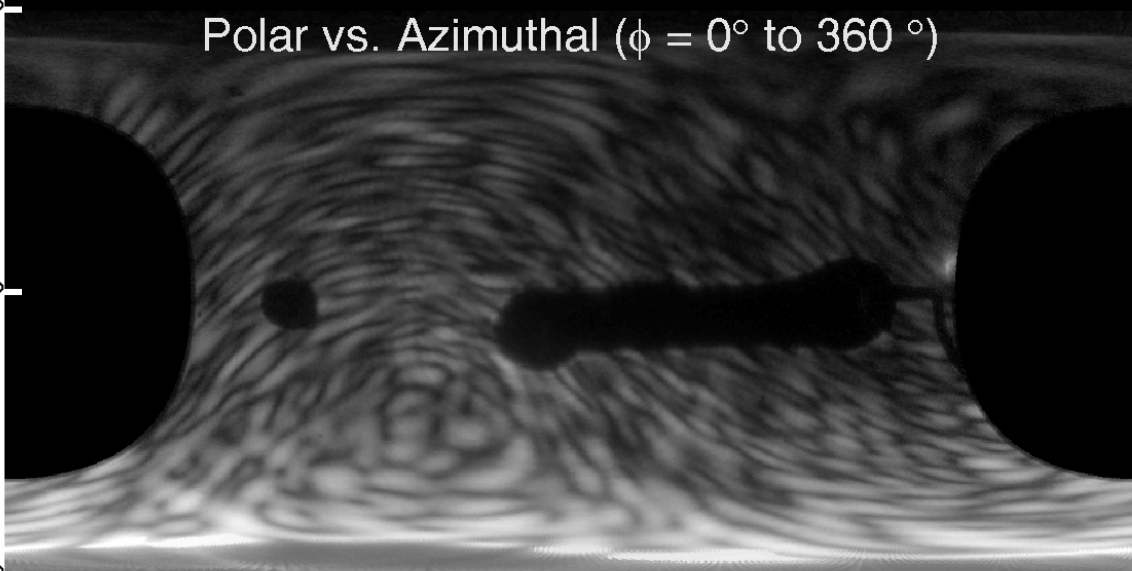


$\theta = 180^\circ$

Polar vs. Azimuthal ($\phi = 0^\circ$ to 360°)

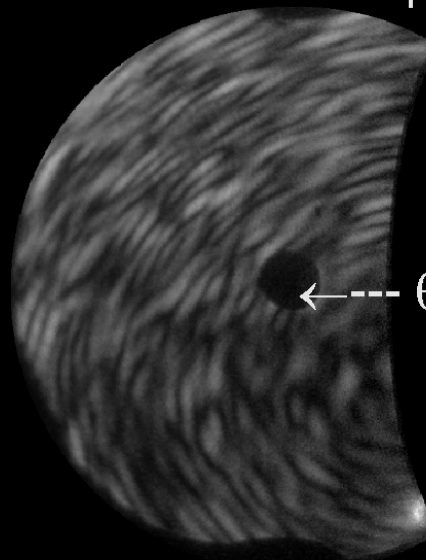
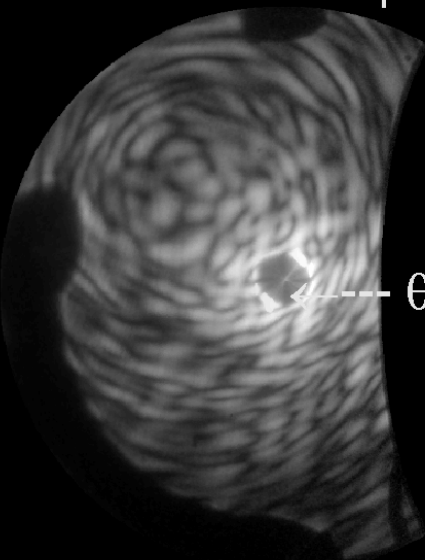
$\theta = 90^\circ$

$\theta = 0^\circ$



Forward Hemisphere

Backward Hemisphere

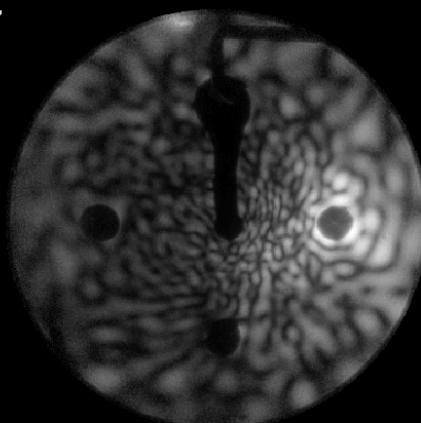


$\theta = 0^\circ$

$\theta = 180^\circ$

Ambient4__5059
Scattered Intensity: 3.3e+007

Raw Data

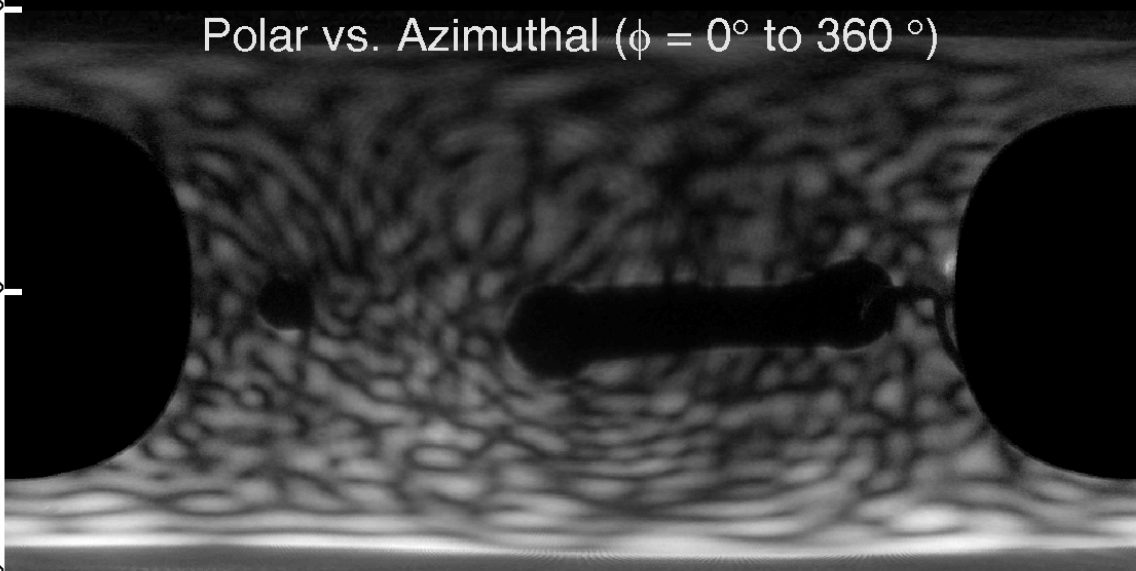


$\theta = 180^\circ$

Polar vs. Azimuthal ($\phi = 0^\circ$ to 360°)

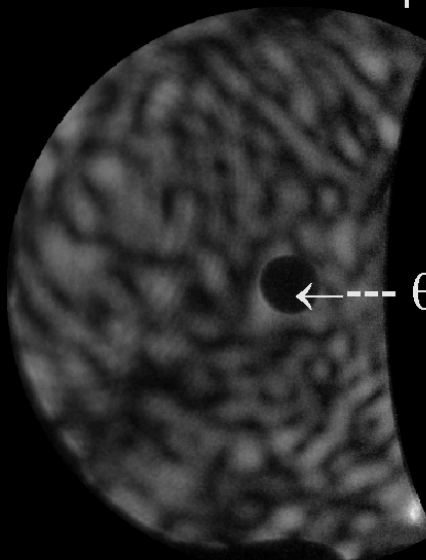
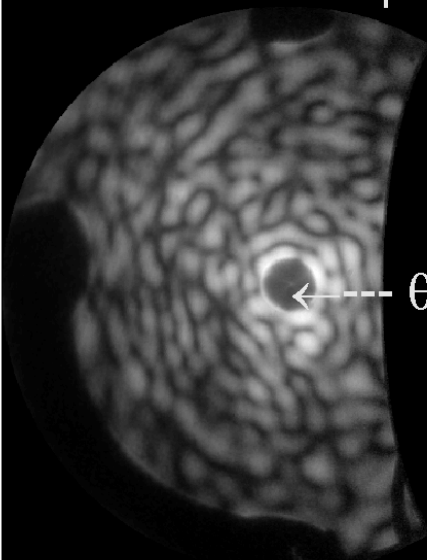
$\theta = 90^\circ$

$\theta = 0^\circ$



Forward Hemisphere

Backward Hemisphere

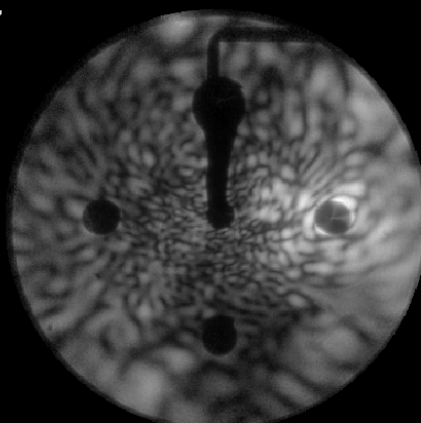


\leftarrow --- $\theta = 0^\circ$

\leftarrow --- $\theta = 180^\circ$

Ambient4__5058
Scattered Intensity: 6.4e+007

Raw Data

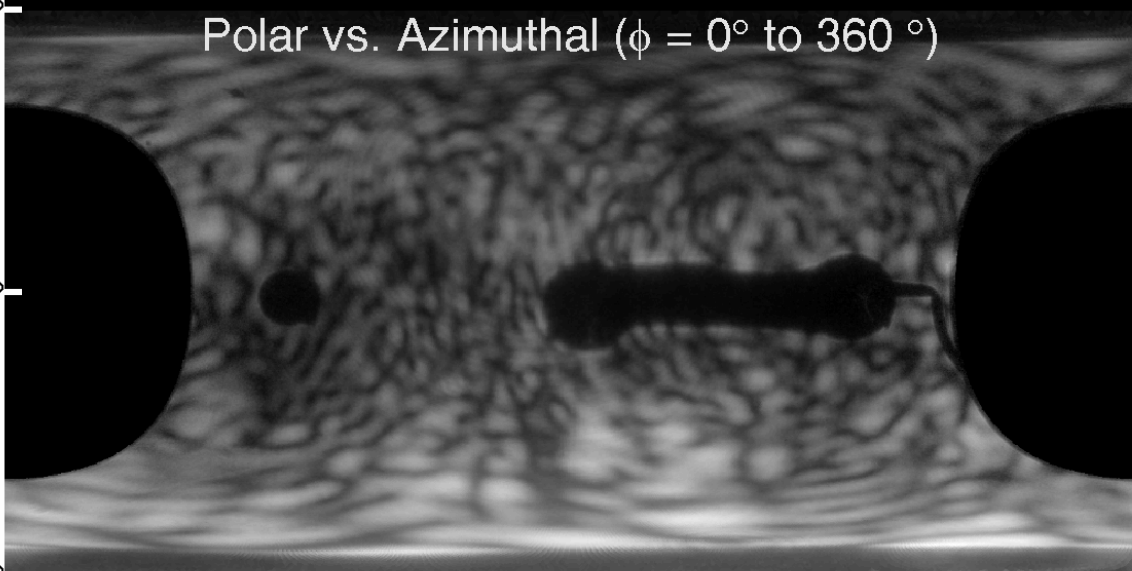


$\theta = 180^\circ$

Polar vs. Azimuthal ($\phi = 0^\circ$ to 360°)

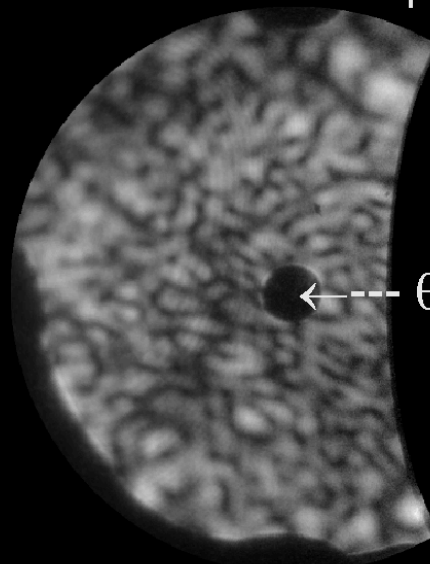
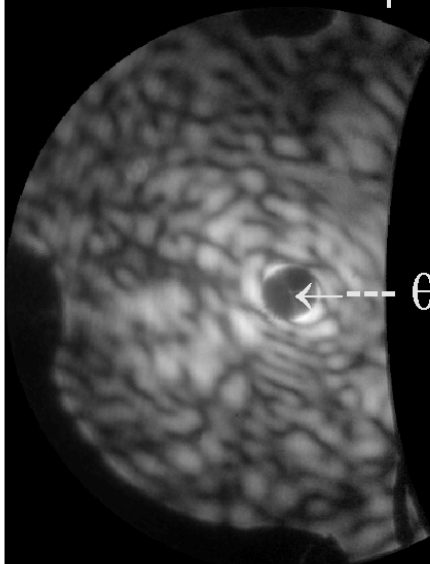
$\theta = 90^\circ$

$\theta = 0^\circ$



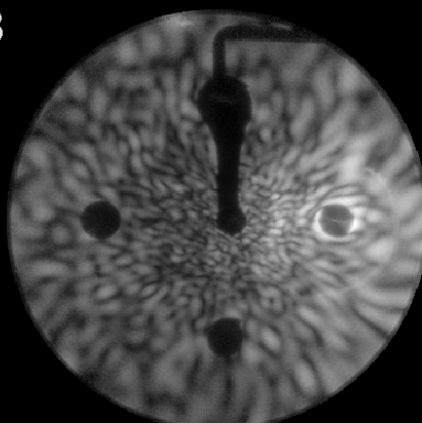
Forward Hemisphere

Backward Hemisphere



Ambient4__5057
Scattered Intensity: 1.0e+008

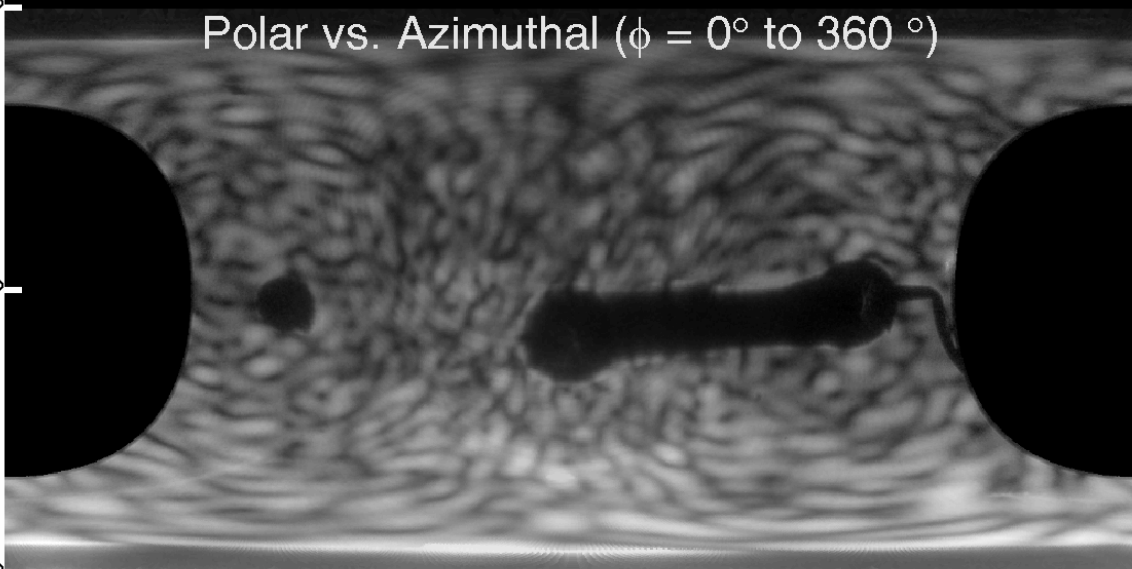
Raw Data



$\theta = 180^\circ$

Polar vs. Azimuthal ($\phi = 0^\circ$ to 360°)

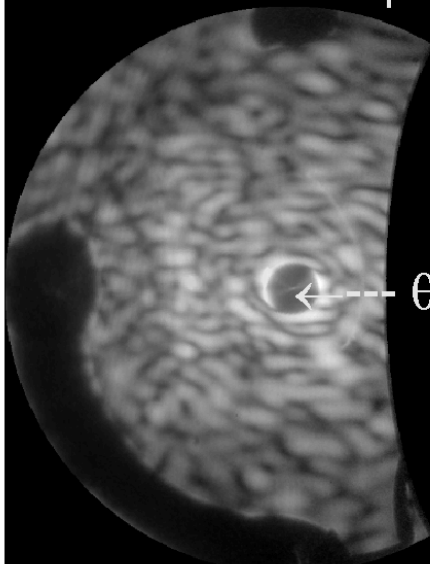
$\theta = 90^\circ$



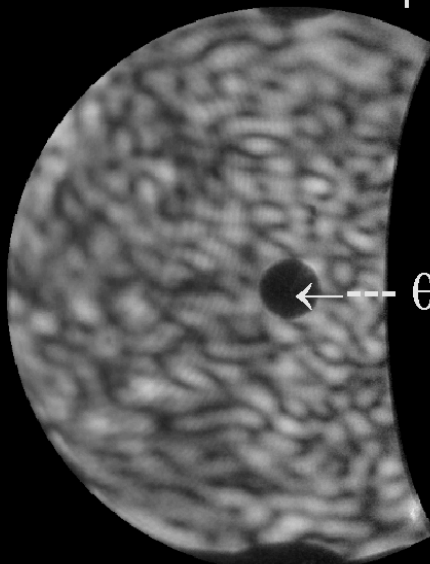
$\theta = 0^\circ$

Forward Hemisphere

Backward Hemisphere



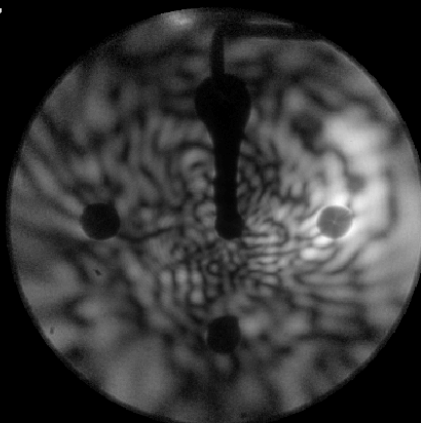
$\theta = 0^\circ$



$\theta = 180^\circ$

Ambient4__5056
Scattered Intensity: 6.6e+007

Raw Data

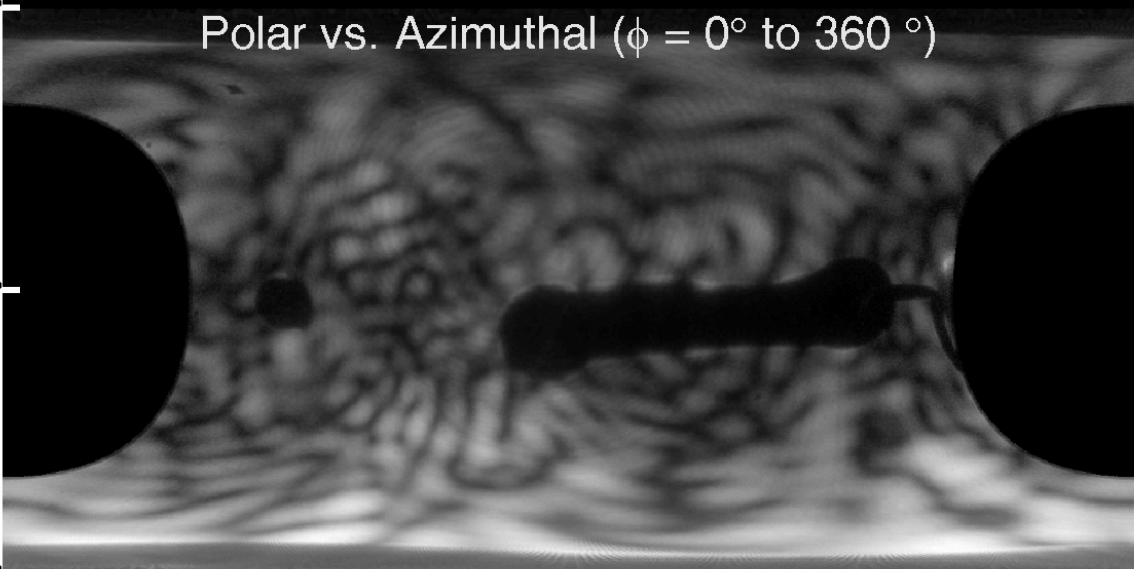


$\theta = 180^\circ$

Polar vs. Azimuthal ($\phi = 0^\circ$ to 360°)

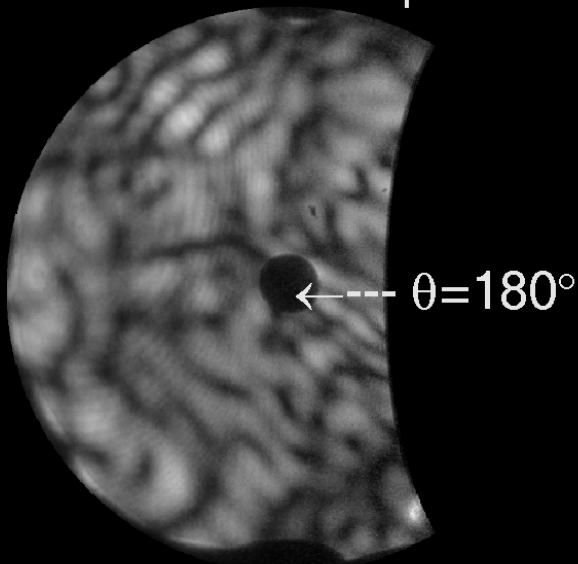
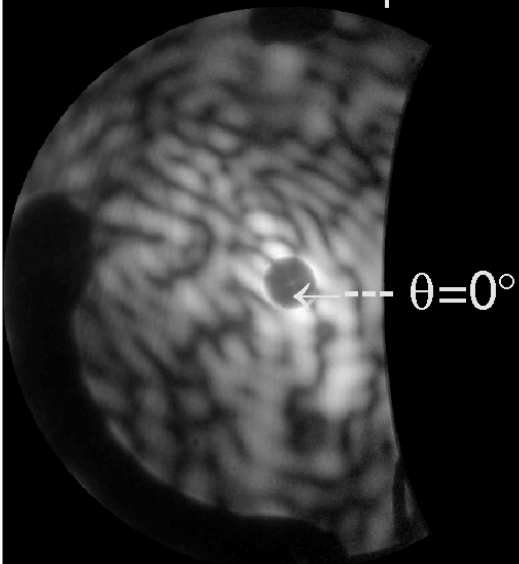
$\theta = 90^\circ$

$\theta = 0^\circ$



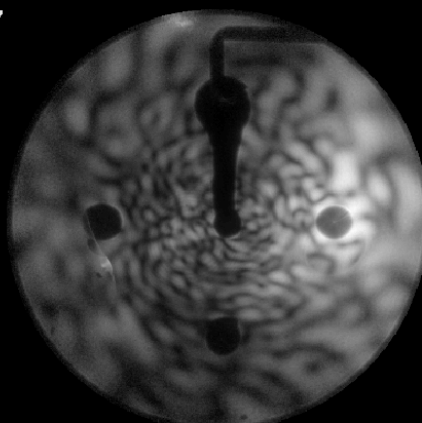
Forward Hemisphere

Backward Hemisphere



Ambient4__5055
Scattered Intensity: $8.1e+007$

Raw Data

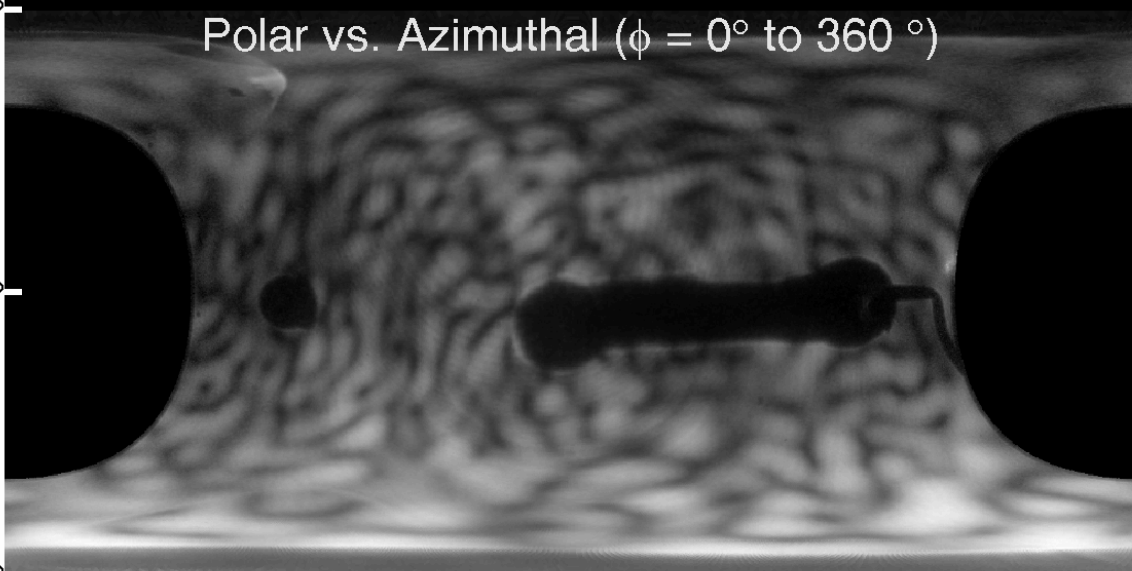


$\theta = 180^\circ$

Polar vs. Azimuthal ($\phi = 0^\circ$ to 360°)

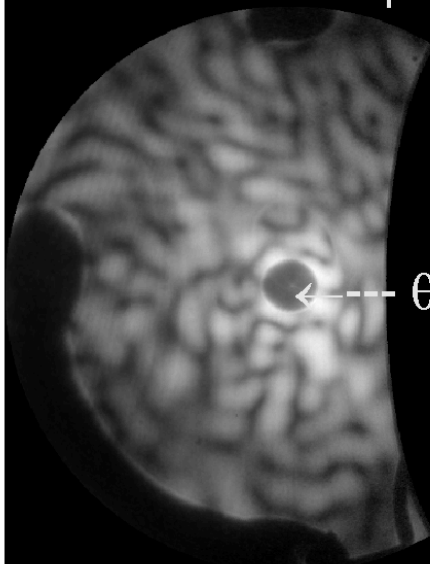
$\theta = 90^\circ$

$\theta = 0^\circ$

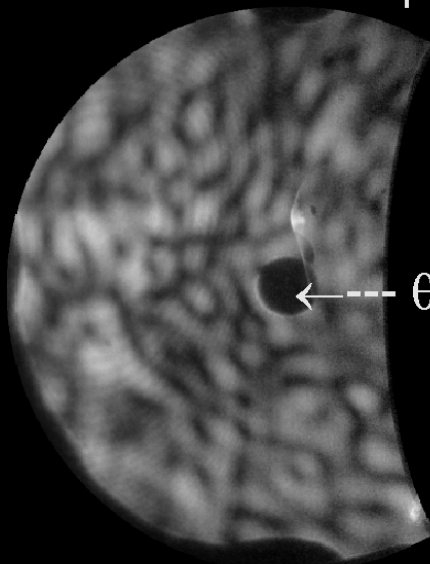


Forward Hemisphere

Backward Hemisphere



$\theta = 0^\circ$



$\theta = 180^\circ$

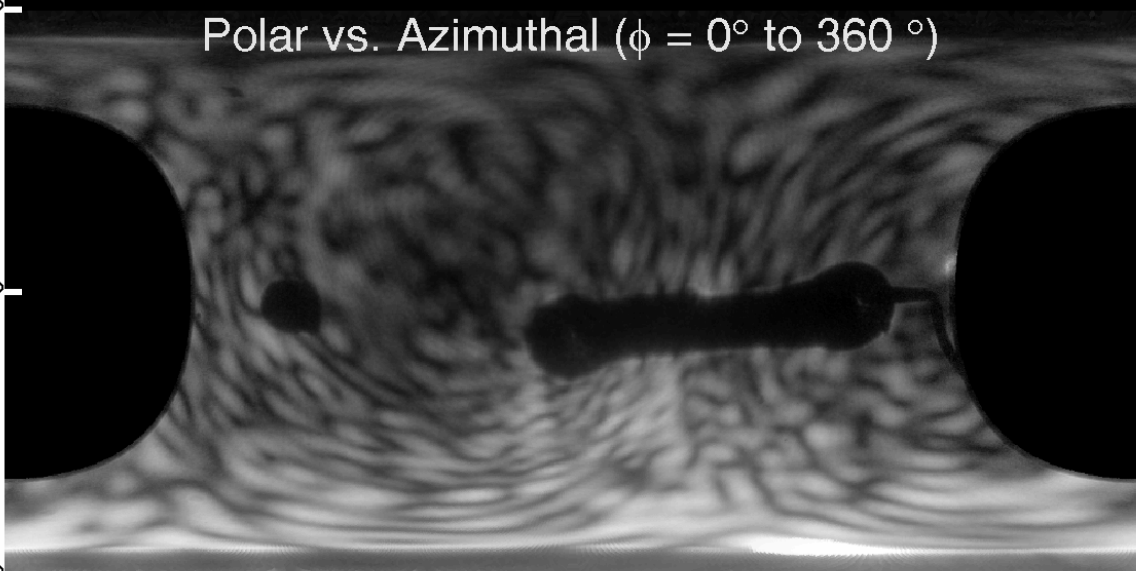
Ambient4__5054
Scattered Intensity: 7.0e+007

Raw Data



$\theta = 180^\circ$

Polar vs. Azimuthal ($\phi = 0^\circ$ to 360°)

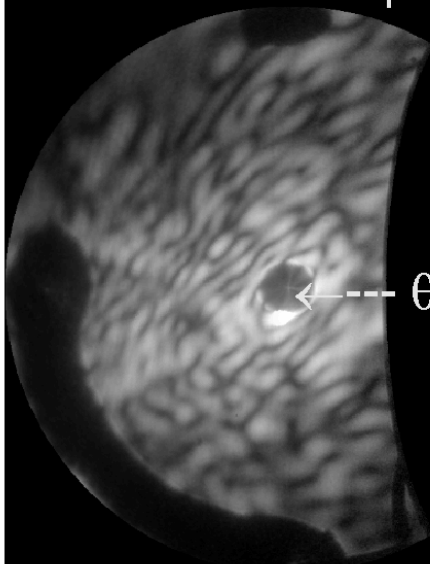


$\theta = 90^\circ$

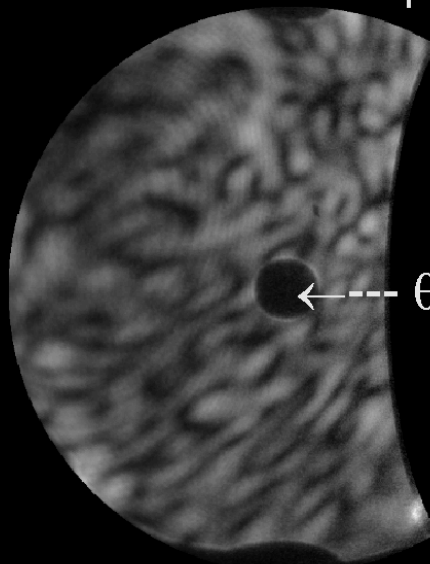
$\theta = 0^\circ$

Forward Hemisphere

Backward Hemisphere



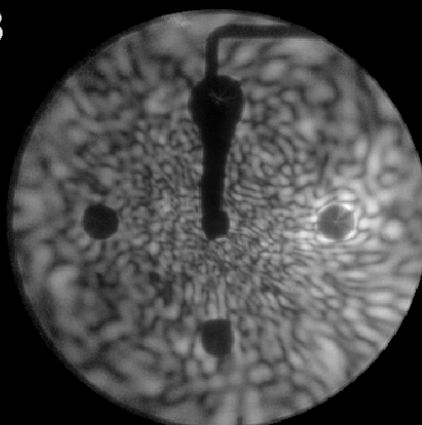
$\theta = 0^\circ$



$\theta = 180^\circ$

Ambient4__5053
Scattered Intensity: 1.1e+008

Raw Data

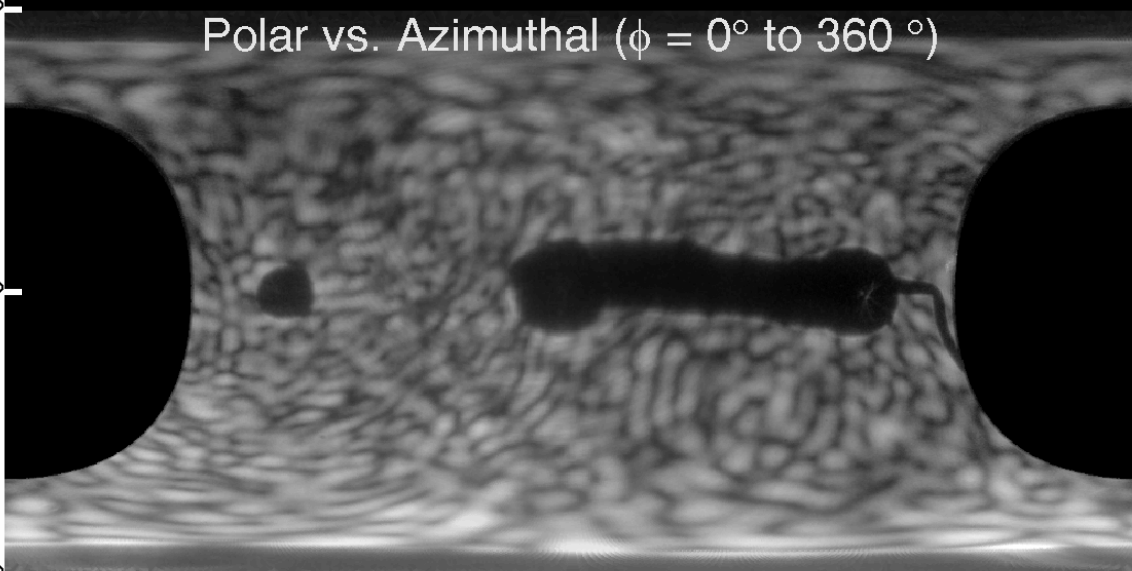


$\theta = 180^\circ$

Polar vs. Azimuthal ($\phi = 0^\circ$ to 360°)

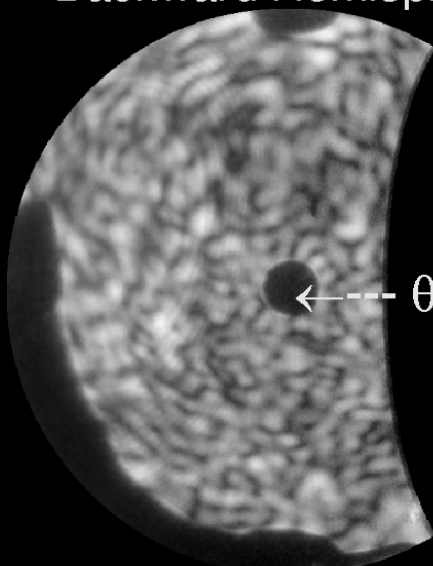
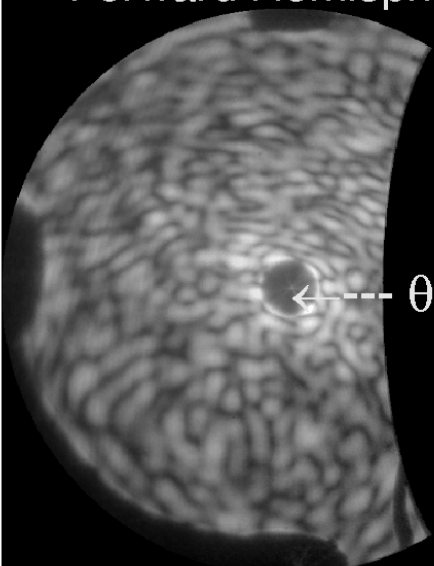
$\theta = 90^\circ$

$\theta = 0^\circ$



Forward Hemisphere

Backward Hemisphere

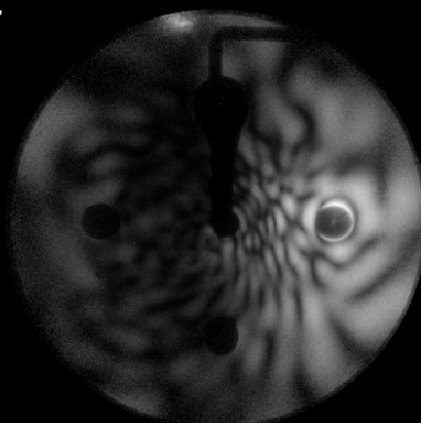


$\leftarrow \text{---} \theta = 0^\circ$

$\leftarrow \text{---} \theta = 180^\circ$

Ambient4__5052
Scattered Intensity: 2.3e+007

Raw Data



$\theta = 180^\circ$

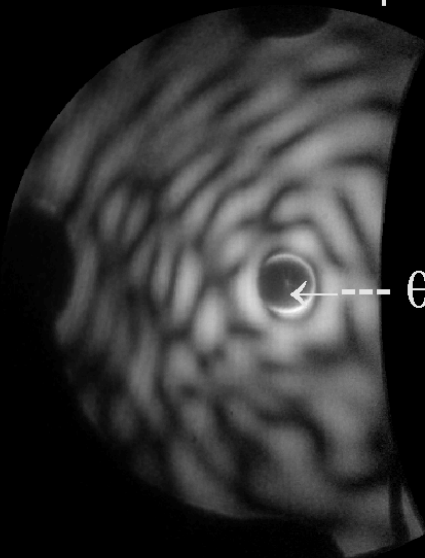
Polar vs. Azimuthal ($\phi = 0^\circ$ to 360°)

$\theta = 90^\circ$

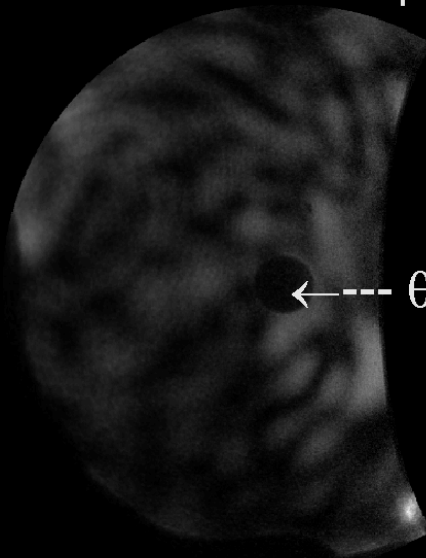
$\theta = 0^\circ$

Forward Hemisphere

Backward Hemisphere



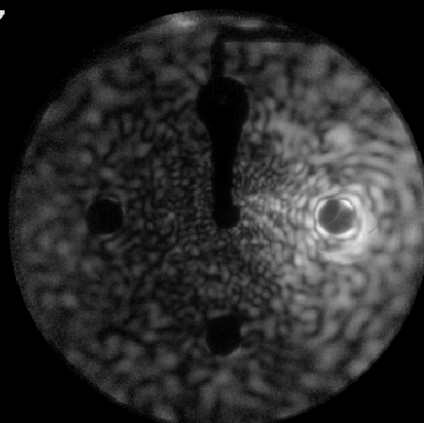
$\theta = 0^\circ$



$\theta = 180^\circ$

Ambient4__5051
Scattered Intensity: 2.9e+007

Raw Data



$\theta = 180^\circ$

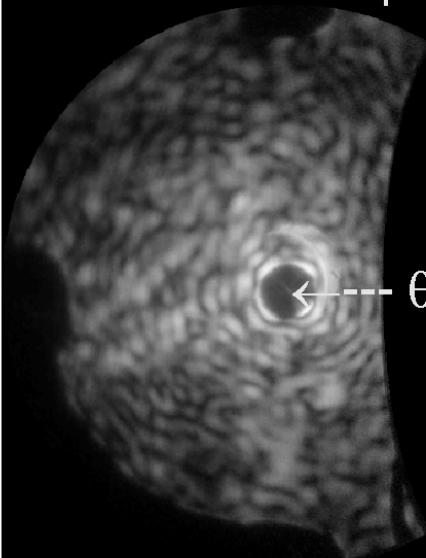
Polar vs. Azimuthal ($\phi = 0^\circ$ to 360°)

$\theta = 90^\circ$

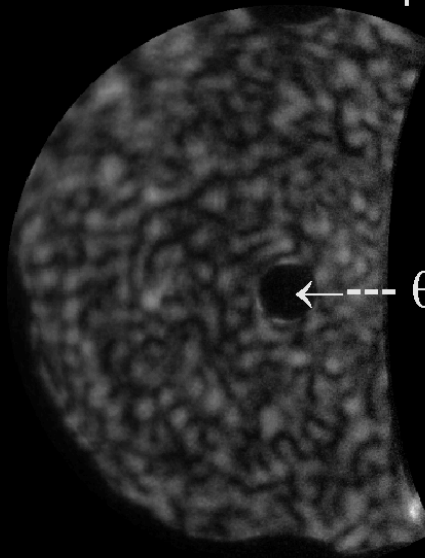
$\theta = 0^\circ$

Forward Hemisphere

Backward Hemisphere



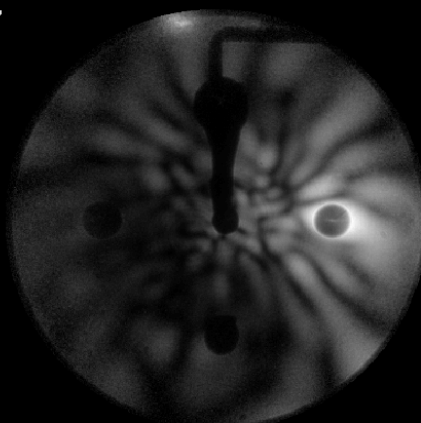
$\leftarrow \theta = 0^\circ$



$\leftarrow \theta = 180^\circ$

Ambient4__5050
Scattered Intensity: 2.4e+007

Raw Data

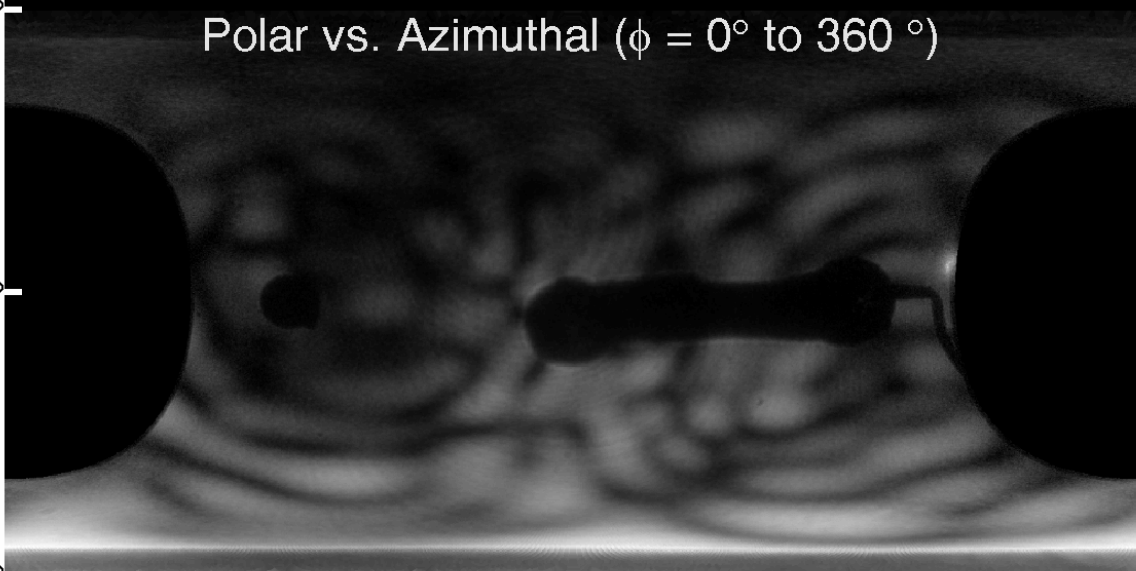


$\theta = 180^\circ$

Polar vs. Azimuthal ($\phi = 0^\circ$ to 360°)

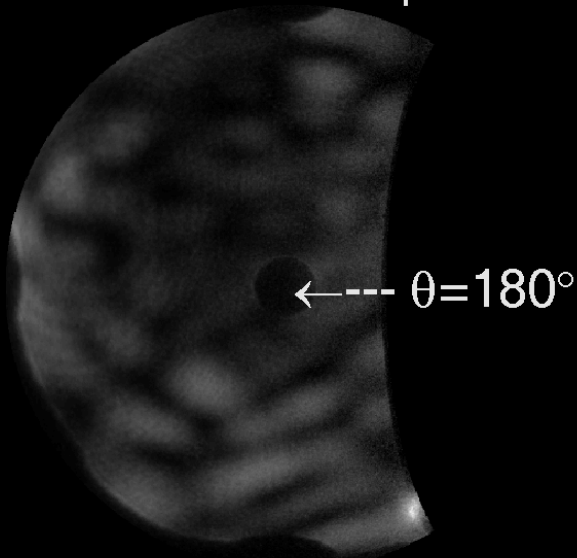
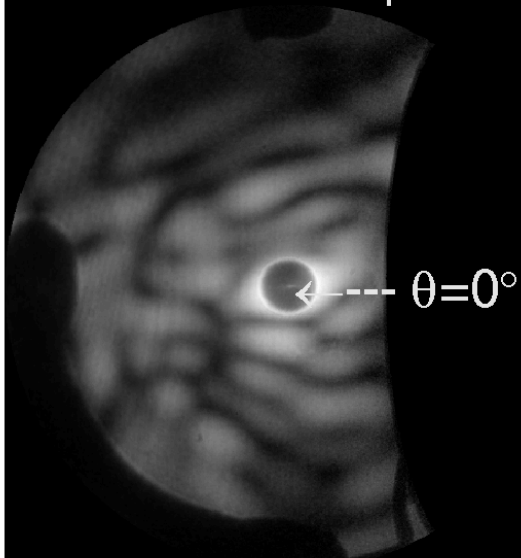
$\theta = 90^\circ$

$\theta = 0^\circ$



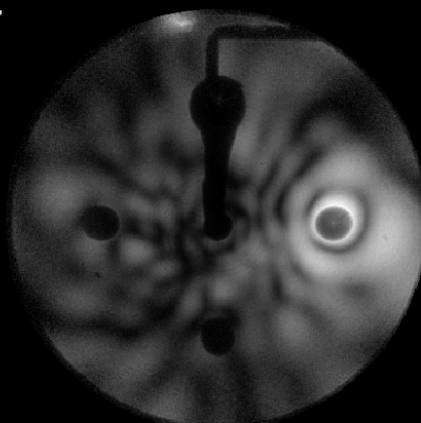
Forward Hemisphere

Backward Hemisphere



Ambient4__5049
Scattered Intensity: 2.9e+007

Raw Data



$\theta = 180^\circ$

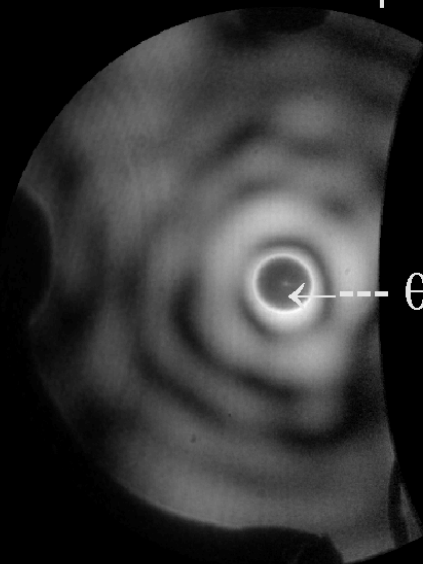
Polar vs. Azimuthal ($\phi = 0^\circ$ to 360°)

$\theta = 90^\circ$

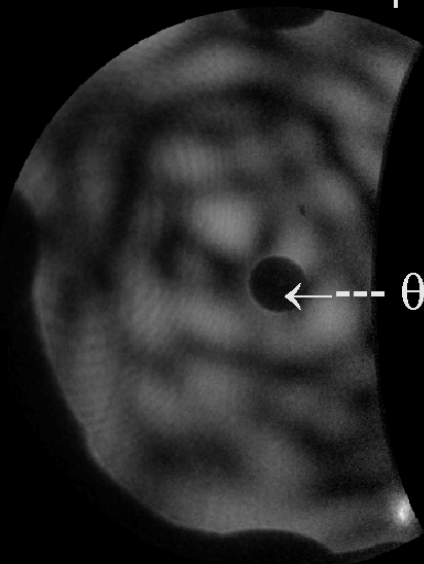
$\theta = 0^\circ$

Forward Hemisphere

Backward Hemisphere



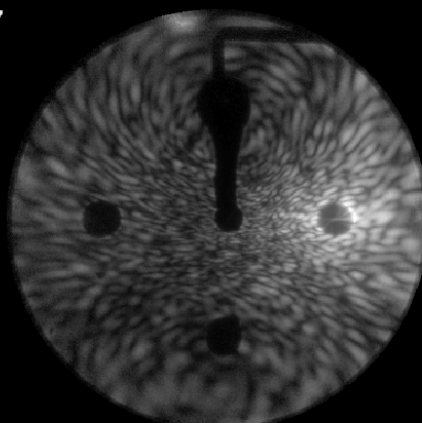
$\theta = 0^\circ$



$\theta = 180^\circ$

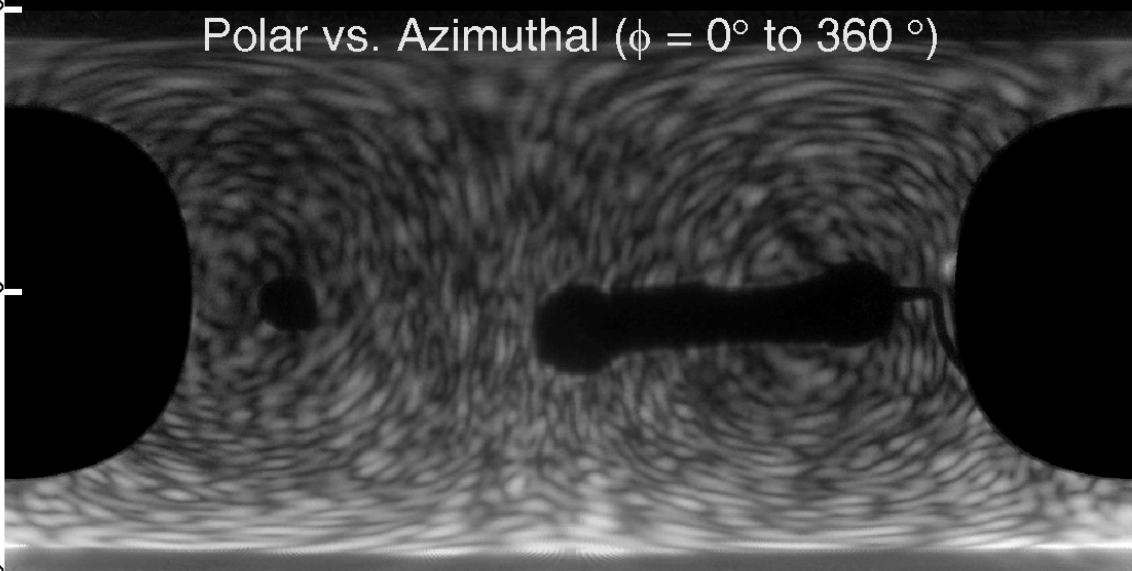
Ambient4__5048
Scattered Intensity: 5.7e+007

Raw Data



$\theta = 180^\circ$

Polar vs. Azimuthal ($\phi = 0^\circ$ to 360°)

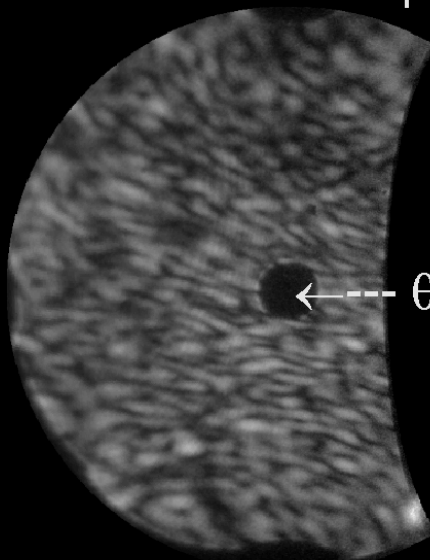
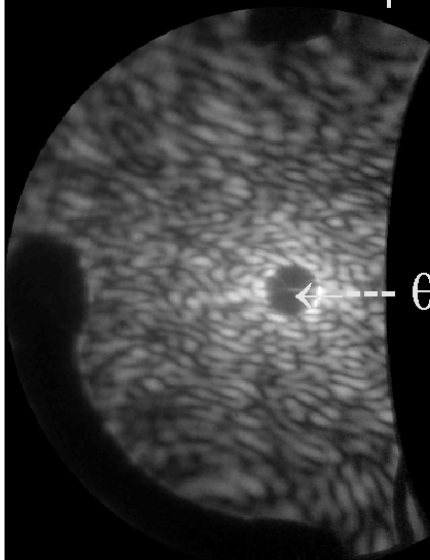


$\theta = 90^\circ$

$\theta = 0^\circ$

Forward Hemisphere

Backward Hemisphere

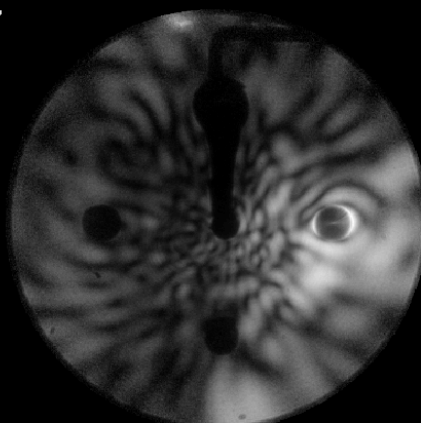


$\leftarrow \theta = 0^\circ$

$\leftarrow \theta = 180^\circ$

Ambient4__5047
Scattered Intensity: 2.8e+007

Raw Data



$\theta = 180^\circ$

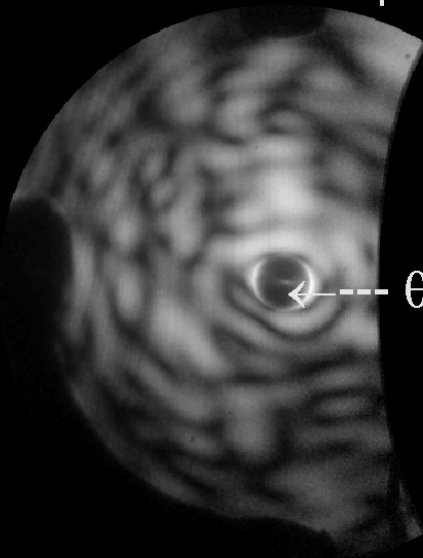
Polar vs. Azimuthal ($\phi = 0^\circ$ to 360°)

$\theta = 90^\circ$

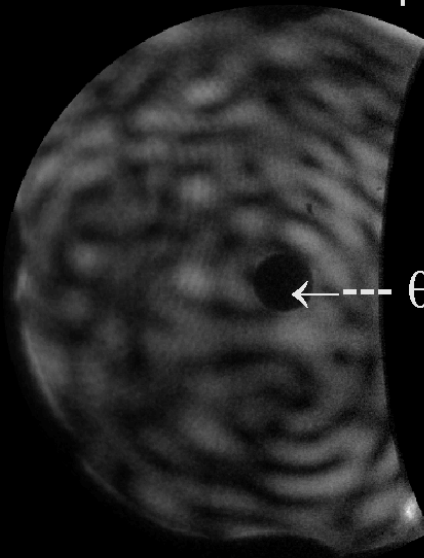
$\theta = 0^\circ$

Forward Hemisphere

Backward Hemisphere



$\theta = 0^\circ$



$\theta = 180^\circ$