

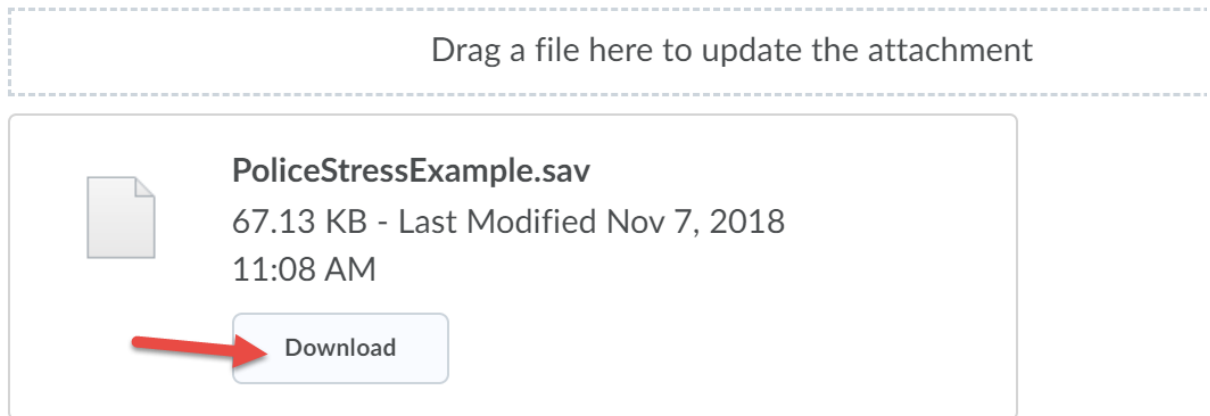
How to Open and Save SPSS files in Ramcloud

Find your file

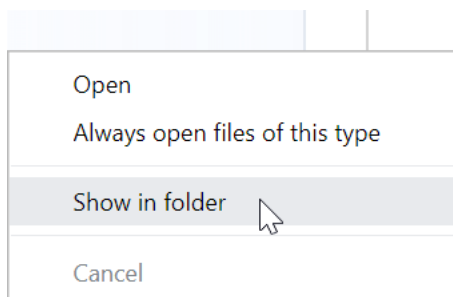
If the file you need to open is located in D2L, you must first download it to your computer and know where it is saved on your computer.

Log into D2L, go to your course and find the file. Click Download.

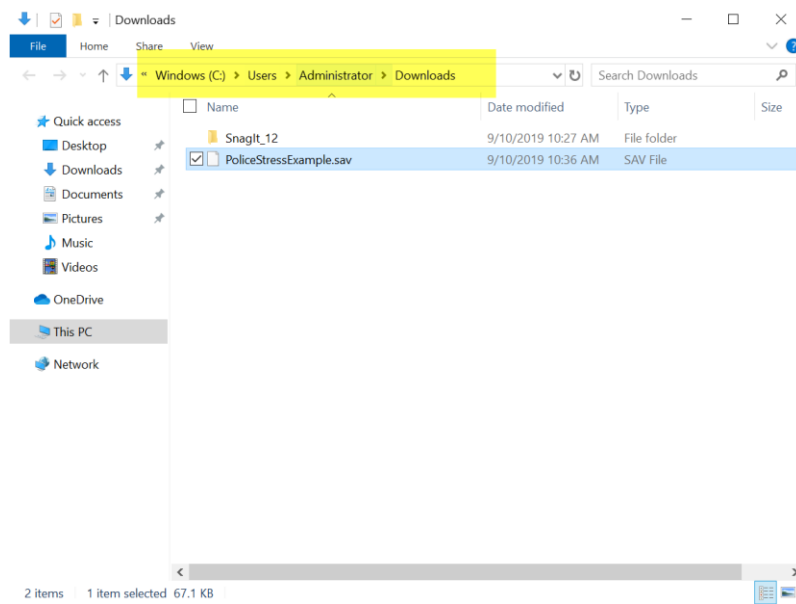
Add a welcome message, overview, or description...



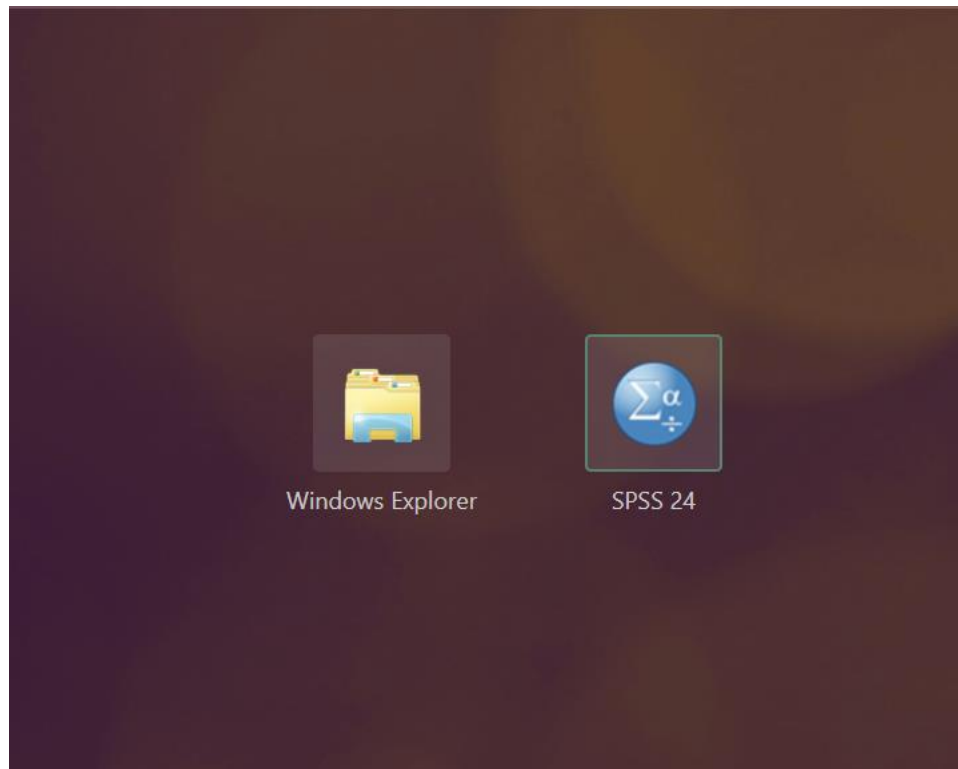
After the file downloads, depending on your browser, you will need to know where the file is saved. You Can click "Show in folder" to find the path to the file.



You will need to know this path after we log into SPSS



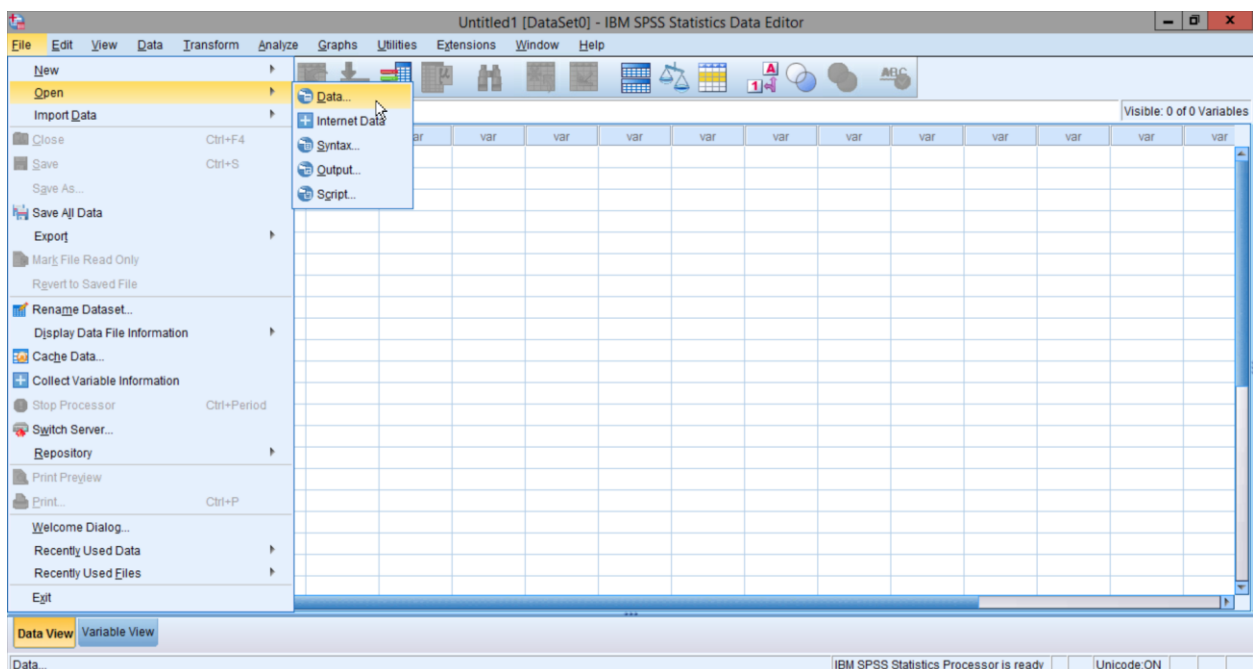
Log into Ramcloud and open SPSS.



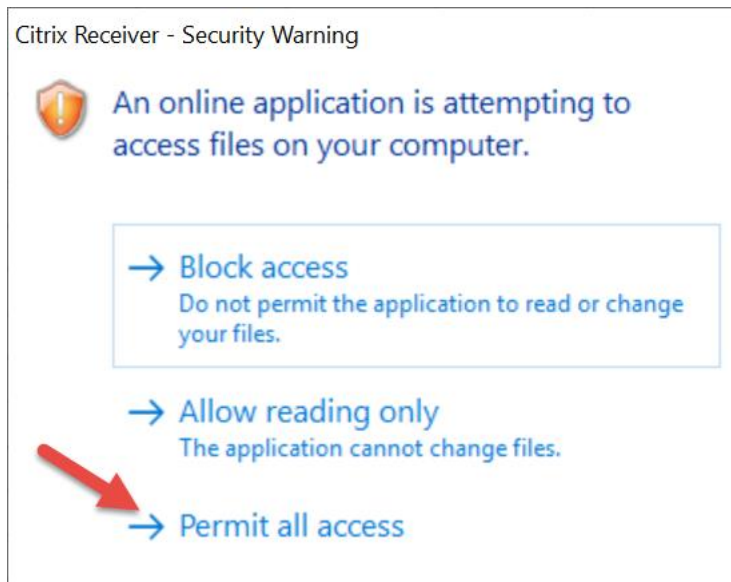
If you are prompted, click, “Permit use”



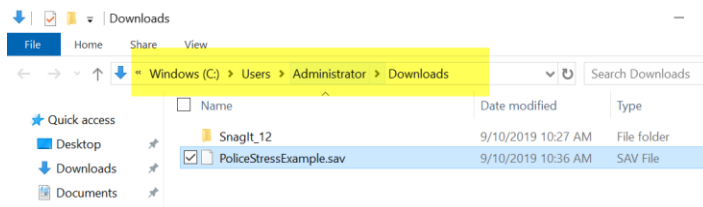
In SPSS, click, File > Open > Data



If prompted, click, “Permit all access”

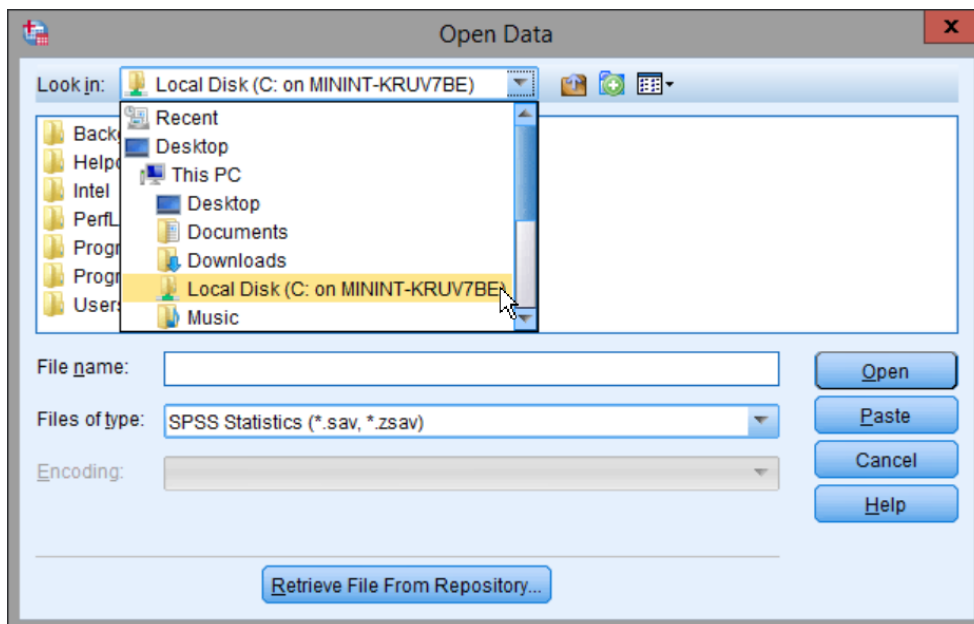


Remembering the path above, pull down the menu at the top of the screen to navigate to your file.

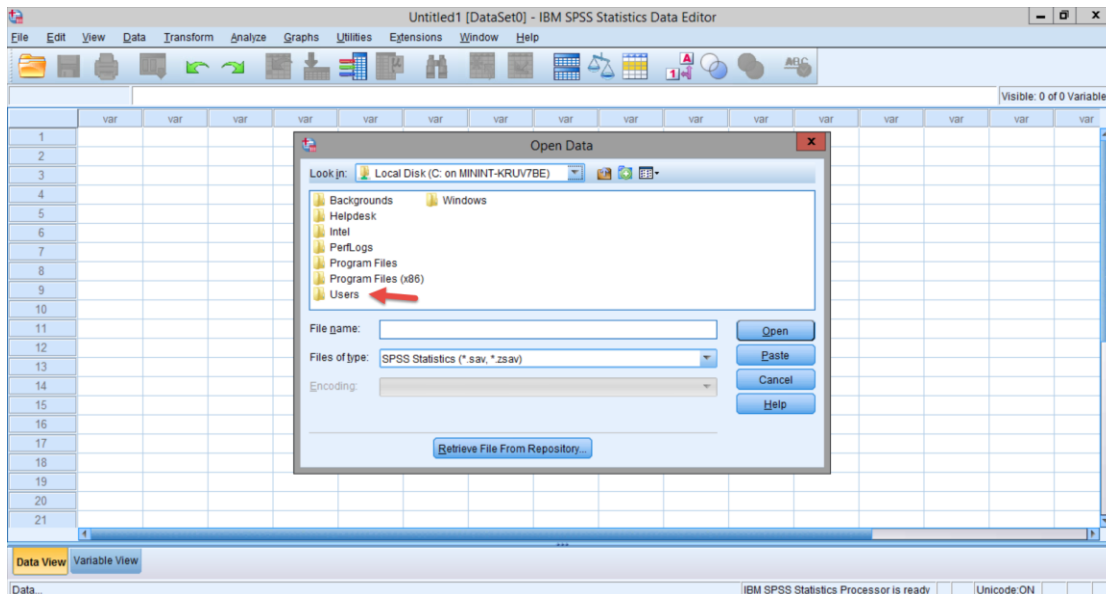


You will want to find “Local Disk (C:)” on a PC and “Local Disk (H:)” on a Mac.

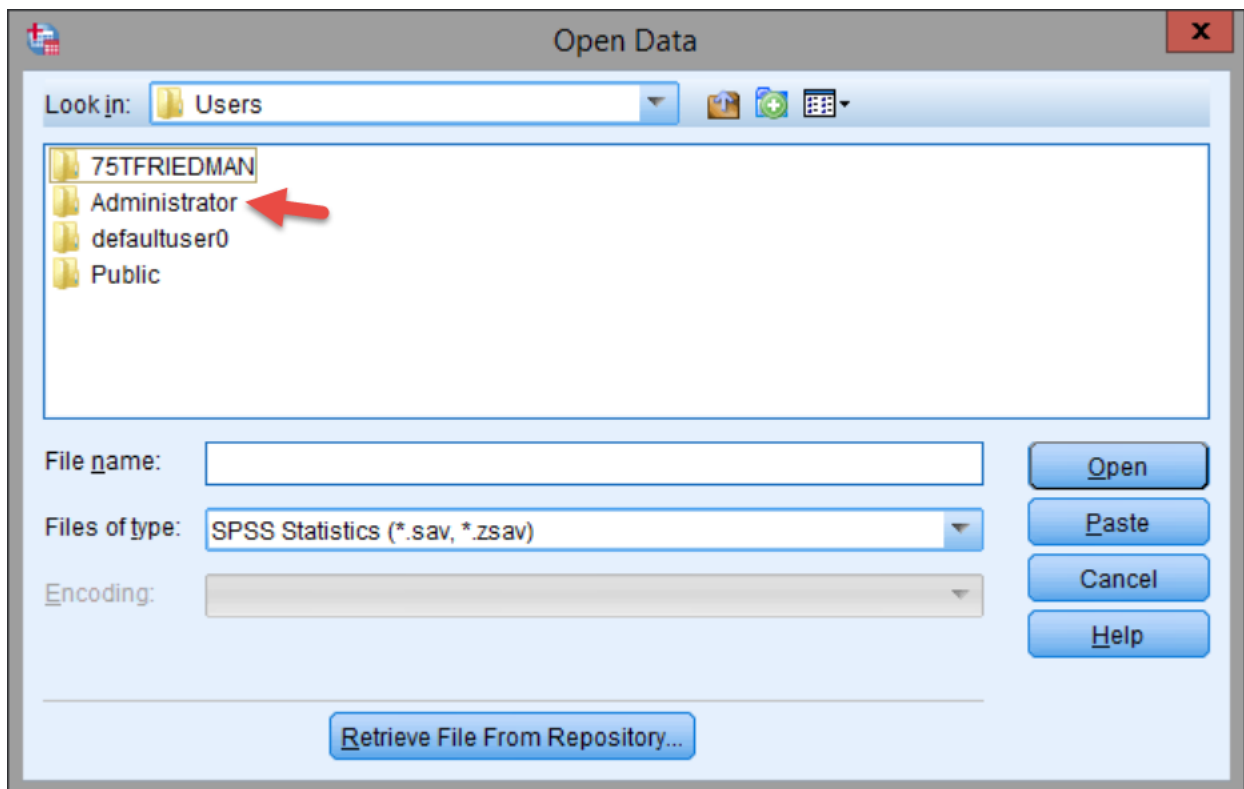
Please note – your path will be different. Follow the path where your document was saved.



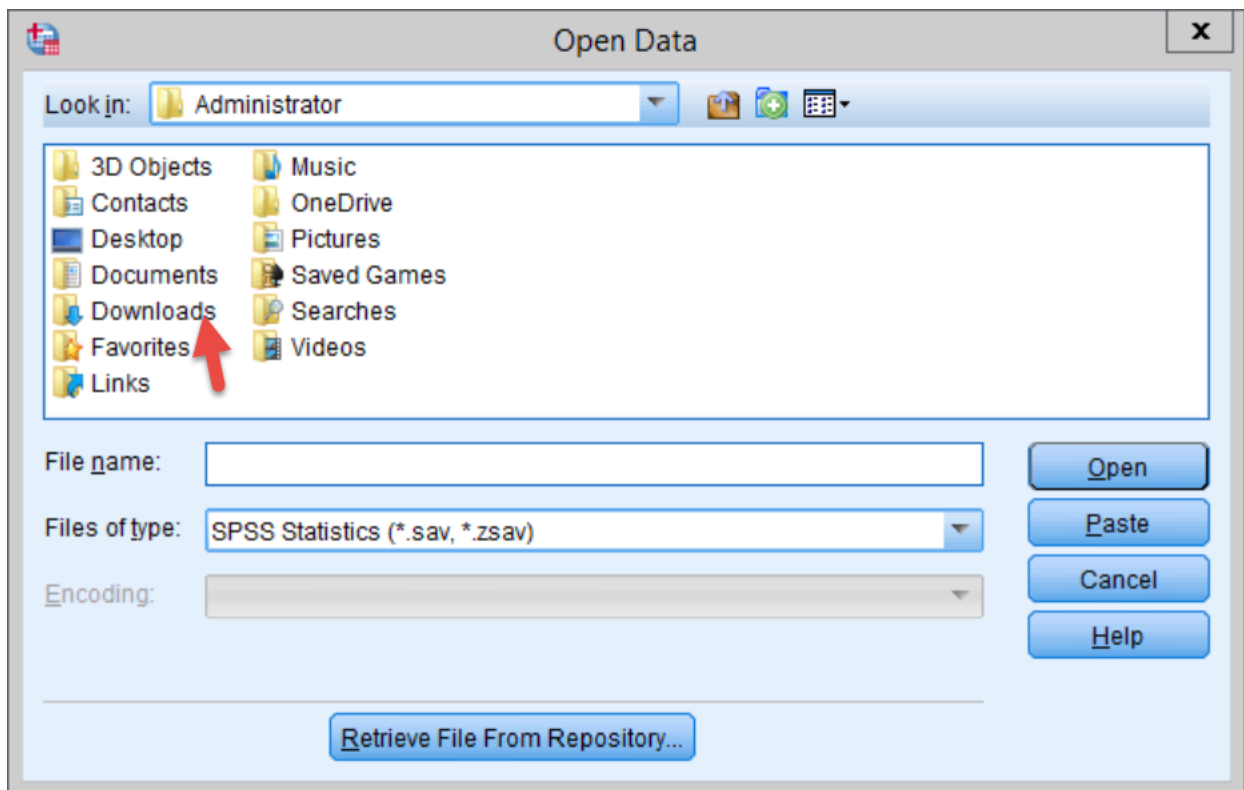
C: > Users



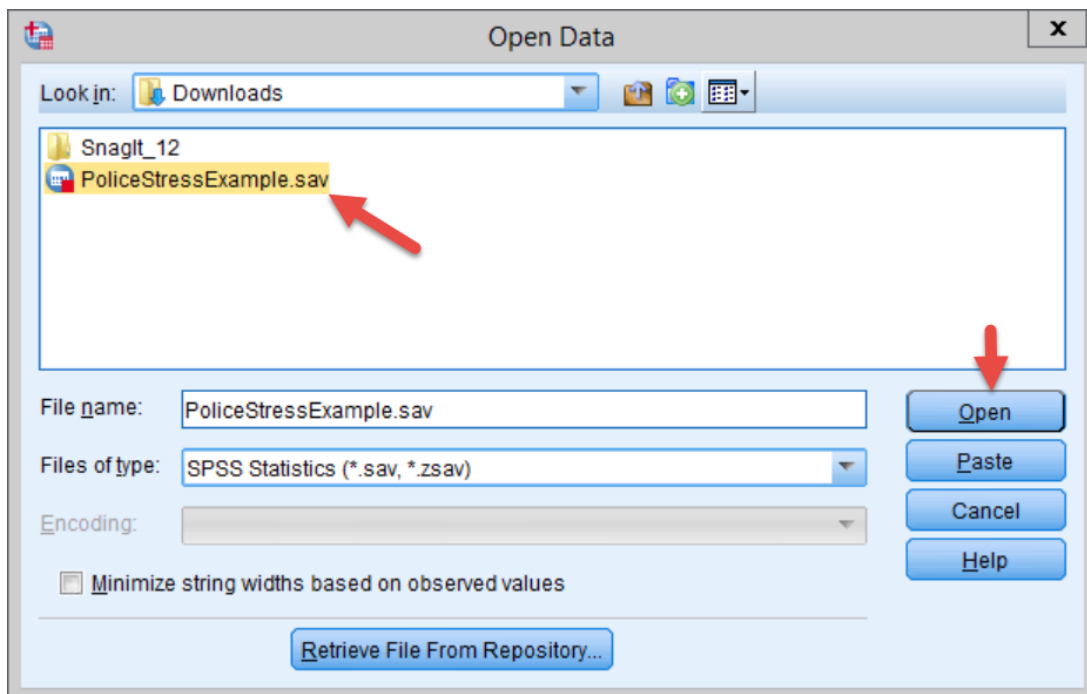
C: > Users > Administrator



C: > Users > Administrator > Downloads



When you find the folder with your file, highlight it and then click, “Open”



PoliceStressExample.sav [DataSet1] - IBM SPSS Statistics Data Editor

File Edit View Data Transform Analyze Graphs Utilities Extensions Window Help

Visible: 35 of 35 Variables

	id_icpsr	id	PerceivedStress	FRIENDS	SEX	AGE	ETHNICITY	EDUCATION	MARITAL_STATUS	VETERAN	yrlawenf	yrcurjob	CHILD	spill2
1	365	364	0	5	2	34	5	999	1	0	9	7	2	5
2	572	571	0	5	1	38	5	6	3	0	14	14	2	2
3	465	464	0	5	2	32	5	5	1	0	6	1	2	2
4	417	416	0	5	2	28	5	4	1	1	6	6	2	4
5	298	297	0	5	2	33	5	4	1	1	6	6	2	4
6	352	351	0	5	2	37	5	4	1	1	14	2	2	4
7	483	482	0	5	2	37	5	4	3	1	13	7	2	2
8	50	49	0	5	1	26	5	4	1	1	4	4	2	4
9	272	271	0	5	1	32	5	4	1	1	5	5	2	3
10	44	43	0	5	1	32	5	4	3	1	8	8	2	2
11	81	80	0	5	1	24	5	4	1	1	7	7	2	1
12	96	95	0	5	1	24	5	4	1	1	3	3	2	3
13	210	209	0	5	1	33	5	4	1	1	7	7	2	2
14	414	413	0	5	1	30	5	4	2	1	7	7	2	1
15	440	439	0	5	1	33	5	4	1	1	8	8	2	1
16	123	122	0	5	1	33	5	3	1	0	6	6	2	4
17	151	150	0	5	1	31	5	3	3	0	10	4	2	3
18	161	160	0	5	1	42	5	3	2	0	20	19	2	4
19	202	201	0	5	1	44	5	3	3	0	20	20	2	2
20	445	444	0	5	2	32	5	2	3	0	7	7	2	4

Data View Variable View

IBM SPSS Statistics Processor is ready Unicode:ON

Saving your work

When you have completed the work on your file, click, File > Save As...

PoliceStressExample.sav [DataSet1] - IBM SPSS Statistics Data Editor

File Edit View Data Transform Analyze Graphs Utilities Extensions Window Help

Visible: 35 of 35 Variables

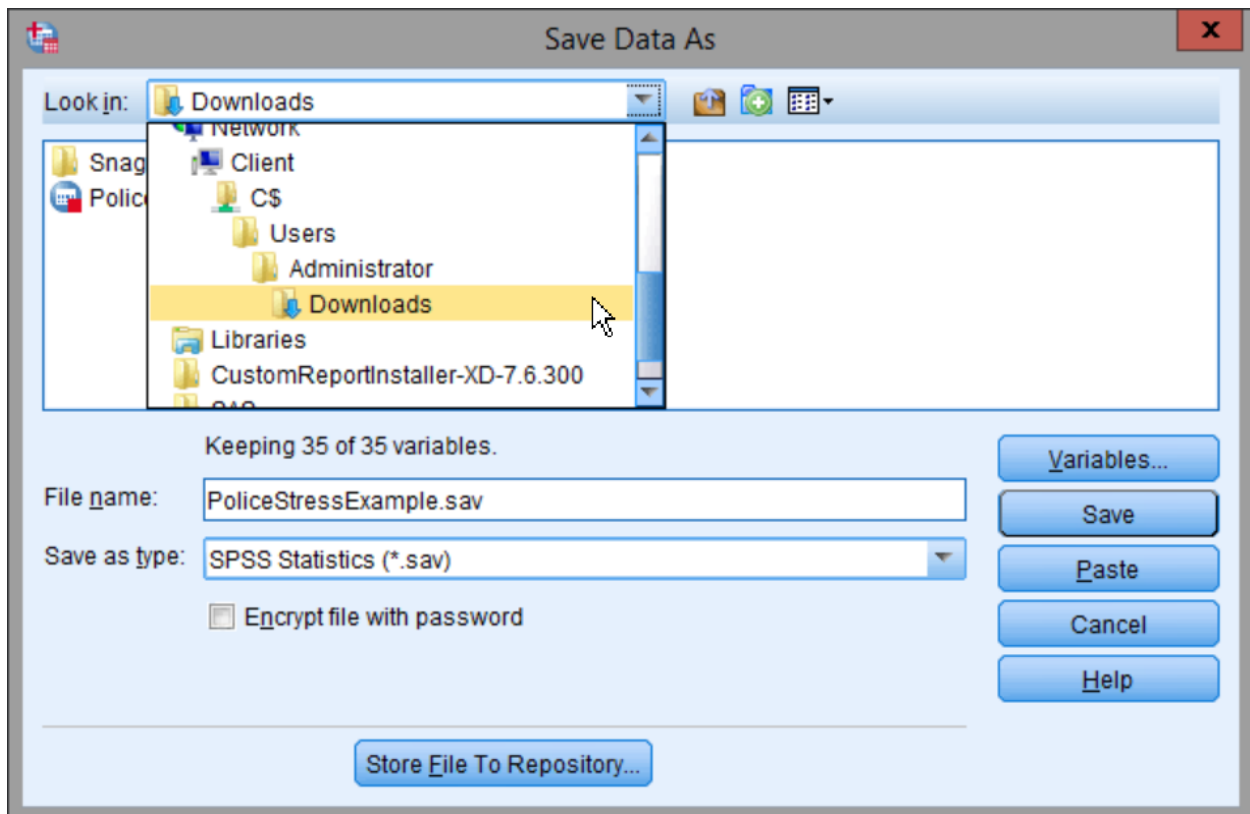
	id_icpsr	id	PerceivedStress	FRIENDS	SEX	AGE	ETHNICITY	EDUCATION	MARITAL_STATUS	VETERAN	yrlawenf	yrcurjob	CHILD	spill2
1	365	364	0	5	2	34	5	999	1	0	9	7	2	5
2	572	571	0	5	1	38	5	6	3	0	14	14	2	2
3	465	464	0	5	2	32	5	5	1	0	6	1	2	2
4	417	416	0	5	2	28	5	4	1	1	6	6	2	4
5	298	297	0	5	2	33	5	4	1	1	6	6	2	4
6	352	351	0	5	2	37	5	4	1	1	14	2	2	4
7	483	482	0	5	2	37	5	4	3	1	13	7	2	2
8	50	49	0	5	1	26	5	4	1	1	4	4	2	4
9	272	271	0	5	1	32	5	4	1	1	5	5	2	3
10	44	43	0	5	1	32	5	4	3	1	8	8	2	2
11	81	80	0	5	1	24	5	4	1	1	7	7	2	1
12	96	95	0	5	1	24	5	4	1	1	3	3	2	3
13	210	209	0	5	1	33	5	4	1	1	7	7	2	2
14	414	413	0	5	1	30	5	4	2	1	7	7	2	1
15	440	439	0	5	1	33	5	4	1	1	8	8	2	1
16	123	122	0	5	1	33	5	3	1	0	6	6	2	4
17	151	150	0	5	1	31	5	3	3	0	10	4	2	3
18	161	160	0	5	1	42	5	3	2	0	20	19	2	4
19	202	201	0	5	1	44	5	3	3	0	20	20	2	2
20	445	444	0	5	2	32	5	2	3	0	7	7	2	4

Data View Variable View

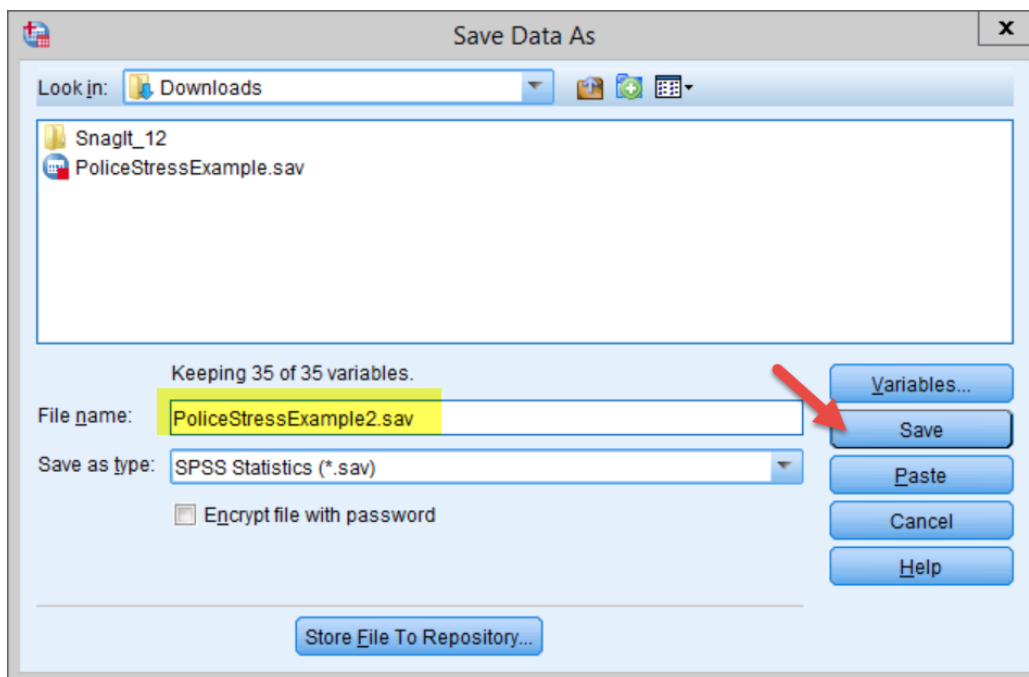
Save As...

IBM SPSS Statistics Processor is ready Unicode:ON

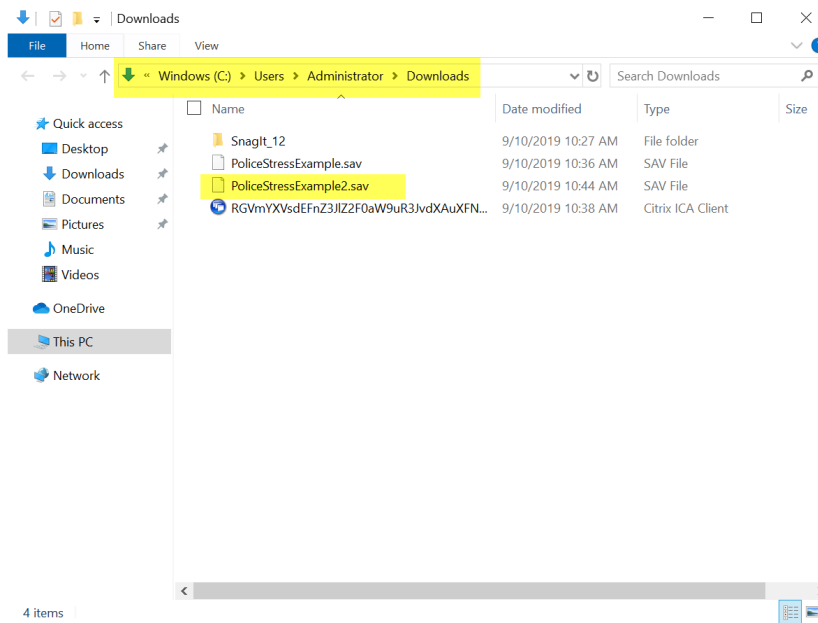
Navigate back to the path on your local machine to save your file. Here it is C: > Users > Administrator > Downloads.



Rename your file, if necessary, then click, "Save"



Note the path where it is saved so that you can find it again.



The path will also be listed in the SPSS Output window:

