



## MSW Program at West Chester University

### Welcome to 2016!

---

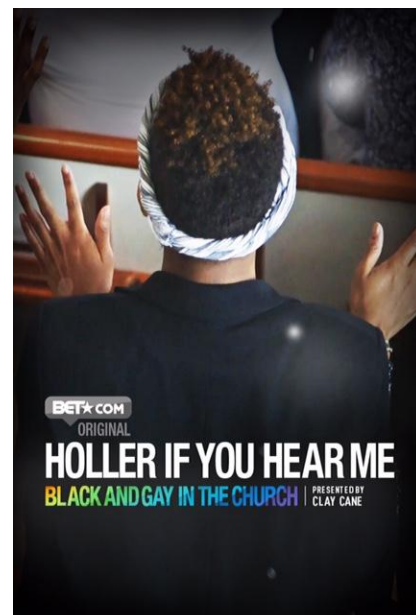
#### In this email

- [Student assists in making BET documentary](#)
  - [MSW graduate gives hope to cancer patients and their partners](#)
  - [Faculty present research at national conference](#)
  - [Recent faculty publications](#)
- 

#### Student assists in BET documentary production

*Film explores being LGBT in Black churches*

African-Americans have historically found refuge in their churches. But many African-Americans who identify as LGBT can't find this refuge among congregations that condemn homosexuality and gender non-conformity.



Journalist [Clay Cane](#) explored this conflict in his documentary, [Holler If You Hear Me: Black and Gay in the Church](#), which debuted on BET in November. Antar Bush, an MSW student who knows Cane from high school, says he spent about two years doing some of the behind-the-

scenes work on the project.

Bush assisted with on-camera interviews for the documentary this summer in Atlanta. He was struck by the extent to which church teachings had affected interviewees' sense of self.

"To hear every Sunday that you're going to go to hell for who you are ..." he says. "None of these pastors physically harmed them, but the damage was still done."

Bush attends WCU's campus in Center City and expects to graduate in May. He hopes to focus his career on program evaluation and analysis.

*Holler If You Hear Me* will be [screened](#) Wednesday at the William Way LGBT Community Center in Philadelphia. A panel discussion will take place afterward. [Dr. Terrence Lewis](#), Assistant Professor in the MSW Program, is one speaker on the panel.

Testing and counseling for HIV will be available during and after the event.

### ***Holler If You Hear Me* screening**

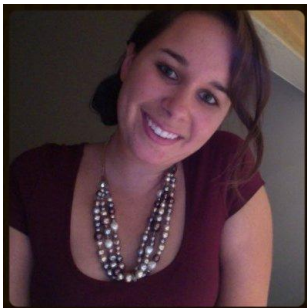
Wednesday, Feb. 3

6 p.m. (doors open 5 p.m.)

William Way LGBT Community Center

1315 Spruce St., Philadelphia

Free admission



## **MSW graduate gives hope to cancer patients and their partners**

*Encouraging couples to keep intimacy in their lives*

When Katie Starrantino, MSW '14, speaks to cancer patients and their partners, they're relieved to hear her message:

It's OK to talk about sexuality. And intimacy can still be part of your life.

After earning her MSW Starrantino went on to Widener University for a Master of Education in human sexuality studies, which she expects to receive in May.

She's also a social worker at the [Majestic Oaks Nursing Home and Rehabilitation Center](#) in Warminster. In the future she hopes to work in oncology social work and open a center specializing in sexuality and cancer.

On top of her job and a second graduate program, Starrantino volunteers with the [Cancer Support Community Greater Philadelphia](#). That work includes presentations to patients and their partners about sexuality.

"People are thrilled to see that there are options for them, that they don't have to give up this part of their life when they've given up so much already," she says.

She often finds couples hungry for information about how to include intimacy in their lives while living with cancer. And medical professionals are usually uncomfortable talking about it.

That's why she says social workers in these settings need to ask their clients if they have any questions or concerns about how medical treatment will impact their sexual health.

"Not only are you helping the patients, but you're helping their partners," Starrantino says.

---

## Faculty present research at national conference

Five faculty from the MSW Program gave presentations last month at the 20th annual [Society for Social Work and Research conference](#) in Washington, D.C. Here are their presentation topics:

- [Does paternal support reduce maternal harsh parenting from violence exposure in community?](#) (Chen, W.-Y.; & Lee, Y.)
- [The mediational role of depression in harsh parenting among mothers exposed to community violence](#) (Lee, Y.; Chen, W.-Y.; & Hadeed, L.F.)
- [Mothers' exposure to domestic and community violence and its association with toddler's behavioral outcomes](#) (Chen, W.-Y.; & Lee, Y.)
- [Multidisciplinary team functioning: A tale of two studies](#) (Chiarelli-Helminiak, C.M.; & Young, T.H.)
- [Implementation of an evidence-based practice in a community agency: Dissemination, evaluation, and Lessons learned](#) (Holbrook, A.M.; & Hunt, S.R.)
- [Using innovative mixed-methods to map context in social work research](#)

(Teixeira, S.; Nicotera, N.; Kao, D.; & **Lavery, A.**)

- [Being Superwoman: Balancing motherhood, problem drinking, and intimate partner violence](#) (Bohrman, C.; & **Tennille, J.A.**)

---

## Recent faculty publications

- **Buck, P.W.**, Fletcher, P., & Bradley, J. (2015). [Decision-making in social work education: A "good enough" framework](#). *Social Work Education*. Advance online publication. doi: 10.1080/02615479.2015.1109073
- Thomas, R.L., **Chiarelli-Helminiak, C.M.**, Ferraj, B., & Barrette, K. (2016). [Building relationships and facilitating immigrant community integration: An evaluation of a Cultural Navigator Program](#). *Evaluation and Program Planning*, 55, 77-84.
- **Krawchuk, L.**, & Sturmer, T. (2016). Healing Flowers. In R.A. Neimeyer (Ed.), [Techniques of Grief Therapy: Assessment and Intervention](#) (pp. 268-272). New York, NY: Routledge.
- **Krawchuk, L.** (2016). Loss Boxes. In R.A. Neimeyer (Ed.), [Techniques of Grief Therapy: Assessment and Intervention](#) (pp. 170-172). New York, NY: Routledge.

[Learn more](#)



**STAY CONNECTED**

