

West  
Chester  
University

# Fact Book 2010

West Chester University  
of Pennsylvania





**West Chester University of Pennsylvania  
Office of Institutional Research**

**809 Roslyn Avenue**

**West Chester, PA 19383**

**Telephone (610) 436-2835**

---

**Fax (610) 436-2635**

## **Introduction & Acknowledgements**

This Fact Book provides some of the most commonly requested information about West Chester University. Much of the information is drawn from the University's database and state mandated reports. Other offices and sources used are cited throughout the document. The cooperation of those offices and sources is much appreciated.

The Fact Book is divided into several chapters: Admissions, Enrollment, Retention/graduation rates, Academic degree programs & accredited programs, Graduation/degree information, and Resources (including financial aid), services and facilities.

Comments and suggestions about additional information that might be included are much appreciated. As such, a fact book evaluation form is included. Completed evaluation forms can be returned to the Office of Institutional Research.

Additional institutional information is available on the World Wide Web: <http://www.wcupa.edu>.



# Table of Contents

<b>GENERAL INFORMATION</b> -----	
<i>About the University and Its Mission</i> -----	6
<i>West Chester University Organizational Chart</i> -----	9
<b>ADMISSIONS</b> -----	
<i>Undergraduate Admissions Standards</i> -----	11
<i>Admission Application Statistics</i> -----	12
<i>First Time Full-Time Freshmen by Admission Type</i> -----	13
<i>SAT Score Distribution- Fall 2010</i> -----	13
<i>SAT Average Scores</i> -----	15
<i>Feeder High Schools: Fall 2010</i> -----	16
<i>Admission Yield Statistics: Fall 2010</i> -----	17
<i>First-Time Freshmen Admission Yield</i> -----	178
<i>First-Time Transfer Admission Yield</i> -----	189
<b>ENROLLMENT</b> -----	
<i>Head Count Enrollment: Fall 2005 to 2010</i> -----	23
<i>Enrollment by State: Fall 2006 to Fall 2010</i> -----	24
<i>Enrollment by Pennsylvania County of Residence: Fall 2010</i> -----	26



## Table of Contents (continued)

<i>Transfer Students Feeder Colleges: Fall 2010</i> -----	21
<i>Head Count Enrollment by Race/Ethnicity and Gender</i> -----	27
<i>Head Count Enrollment by College</i> -----	28
<i>Head Count Enrollment by Level</i> -----	30
<i>Credit Hours and Student FTE Enrollment</i> -----	31
<b>RETENTION AND GRADUATION</b> -----	
<i>Retention &amp; Graduation Rates for First-Time, Full-Time Freshmen: University sum</i> -----	33
<i>Second-Year Retention Rates for First-Time, Full-Time Freshmen by Race/Ethnicity and by Gender</i> -----	34
<i>Four and Six-Year Graduation Rates by Race/Ethnicity and by Gender</i> -----	35
<b>ACADEMIC AND DEGREE PROGRAMS</b> -----	
<i>Undergraduate Degrees and Majors</i> -----	37
<i>Graduate Degrees and Majors</i> -----	38
<i>Professional and Program Accreditations</i> -----	39
<b>DEGREES CONFERRED</b> -----	43
<b>REOURCES, SERVICES &amp; FACILITIES</b> -----	60



## Quick Facts

*West Chester University*  
*West Chester, PA 19383*  
*Telephone 610/436-1000*  
*<http://www.wcupa.edu/>*

---

<b>Founded</b>	1871
<b>President</b>	Dr. Greg R. Weisenstein
<b>University Accreditation</b>	Middle States Commission on Higher Education (MSCHE)
<b>Fall 2010 Enrollment</b>	14,492
<b>Undergraduate</b>	12,234
<b>Graduate</b>	2,258
<b>Fall 2010 Credit Hours</b>	
<b>Undergraduate</b>	11,971
<b>Graduate</b>	1,521
<b>Authorized Degree Programs</b>	187
<b>Degrees Awarded in 2009-2010</b>	
<b>Bachelors</b>	2,422
<b>Masters</b>	631
<b>Library Collections</b>	100,669

---



# GENERAL INFORMATION



---

## **About the University and Its Mission**

### **The West Chester University Mission Statement**

West Chester University, a member of the Pennsylvania State System of Higher Education, is a public, regional, comprehensive institution committed to providing access and offering high-quality undergraduate education, select post-baccalaureate and graduate programs, and a variety of educational and cultural resources for its students, alumni, and citizens of southeastern Pennsylvania.

### **The West Chester University Values Statement**

West Chester University is committed to attracting, enrolling, and graduating quality students from a wide variety of educational, cultural, and economic backgrounds. This endeavor requires the University to attract and retain highly qualified faculty and staff and to provide each member of the University community with learning and leadership development opportunities. To this end, the University supports and encourages programs which benefit all people and which seek to eradicate discrimination and injustice. We treasure what we believe to be the highest principles of American society: the worth and uniqueness of each individual, the belief that success is to be earned by individual effort put forth in an environment founded on equality of opportunity, and the appreciation of the ideal of an inclusive society.

We believe that it is incumbent upon all members of our community—staff, students, faculty and administrators—to conduct themselves with civility toward one another at all times. We value the special talents and contributions of each member of our community. We further affirm the worth and dignity of each member and the shared responsibility of all to treat each other as individuals, with respect and courtesy.

As a university owned by the citizens of Pennsylvania, we value our mission to provide the best educational opportunities possible which will enable the University community to successfully address the concerns of a global society. To this end, West Chester



---

University seeks to provide diligent advising for students and to focus on teaching students to think clearly and critically, to make logical and ethical judgments, and to communicate effectively with others.

West Chester University's community strongly supports the principles of academic integrity and academic responsibility, viewing both as the province of every member of the campus community. We hold the highest esteem for teaching directed toward student learning and affirm that mastery of content as well as mastery of teaching skills necessary to communicate such content is paramount.

This values statement is intended to be a living document which will serve West Chester University as it changes and evolves in the coming years.

### **About West Chester University of Pennsylvania**

West Chester University offers bachelors and masters degrees in the arts and sciences, teacher training and certification, advanced study preparation in fields such as medicine and law, education for specific professions, and continuing education.

Total enrollment at West Chester University includes approximately 12,234 undergraduate students and 2,258 graduate students. While most undergraduates are recent high school graduates preparing for career objectives, many others are older individuals, including veterans and homemakers, who either never before had the opportunity for a college education or whose schooling was interrupted.

Most students are residents of Pennsylvania but students from other states and foreign countries are welcome. The student body at West Chester University represents a cross section of many ethnic, racial, and religious groups and includes students from all socioeconomic levels.

Like the world around it, West Chester University is constantly transforming. The school continues to broaden and modify the nature and number of its programs to reflect the needs of its students in their endeavor to prepare themselves for success and fulfillment in life.





## **The History of West Chester University of Pennsylvania**

Founded in 1871, West Chester University began as West Chester Academy, a private, state-aided school that existed from 1812 to 1869. The academy enjoyed strong support from the highly intellectual Chester County Cabinet of the Natural Sciences of the pre-Civil War decades. It was recognized as one of Pennsylvania's leading preparatory schools, and its experience in teacher training laid the groundwork for the normal school years that were to follow.

As the state began to take increasing responsibility for public education, the academy was transformed into West Chester Normal School, still privately owned but state certified. The normal school admitted its first class, consisting of 160 students, on September 25, 1871. In 1913, West Chester became the first of the normal schools to be owned outright by the Commonwealth.

West Chester became West Chester State Teachers College in 1927 when Pennsylvania initiated a four-year program of teacher education. In 1960, as the Commonwealth paved the way for liberal arts programs in its college system, West Chester was renamed West Chester State College, and two years later introduced the liberal arts program that turned the one-time academy into a comprehensive college.

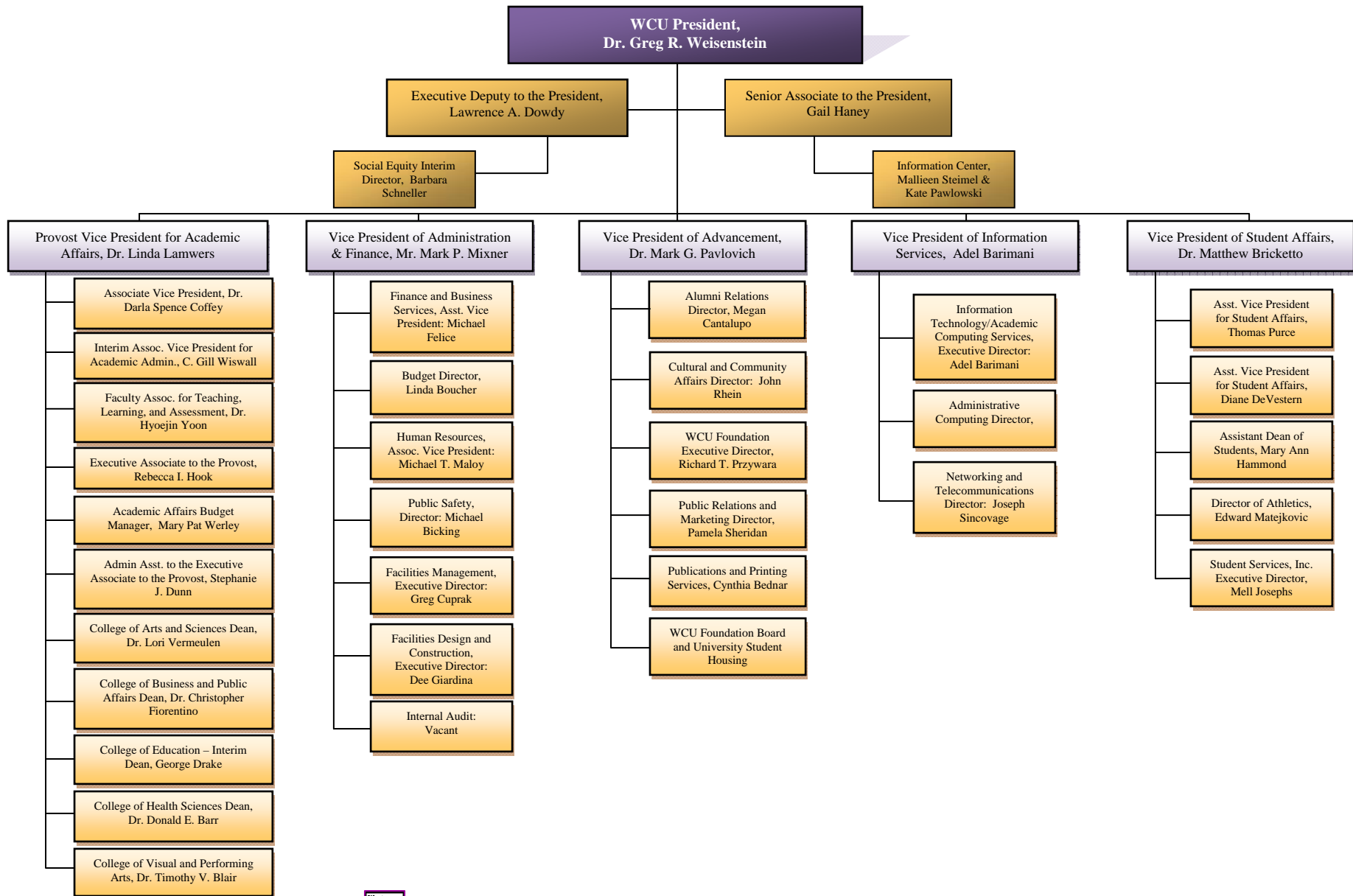
In recognition of the historic merit of the campus, in 1981 the West Chester State College Quadrangle Historic District was placed on the National Register of Historic Places. The buildings included in this historic district are Philips Memorial Building, Ruby Jones Hall, Recitation Hall, and the Old Library. Except for Philips, these buildings are all constructed of native Chester County serpentine stone.

West Chester State achieved another major milestone with passage of the State System of Higher Education bill. West Chester became one of the 14 universities in the State System of Higher Education on July 1, 1983. Along with its new name -- West Chester University of Pennsylvania of the State System of Higher Education -- the institution acquired a new system of governance and the opportunity to expand its degree programs.

<http://www.wcupa.edu/>



# Organizational Chart



# ADMISSIONS



## Undergraduate Admissions Standards

West Chester University prides itself on the holistic approach used in evaluating applicant credentials. Each application is reviewed individually, and we carefully consider scholastic performance and academic preparation to determine an individual's potential for success.

For regular admission as a first-year student we recommend successful completion of a college preparatory curriculum in high school, honors and AP classes are a plus, rank in class in the 50th percentile or better, a grade point average of 3.00+, and a minimum combined SAT score of 1000 or better (prefer a minimum of 500 in both verbal and math.) It is important to realize that these factors are guidelines for consideration. The academic profile of the regular admits who enroll at West Chester University is a mean SAT combined score of 1,000, a rank in the top third of their class or 68% percentile, and a grade point average of 3.39.

Applicants who do not meet regular admissions standards may be considered for a special admissions program if appropriate or denied admission and counseled to enroll at another college or university for a minimum of 24-30 credits before reapplying as a transfer student.

Transfer applicants must have a minimum grade point average of 2.00 for admissions consideration. The majority of our transfers have a Cumulative GPA of 2.50 or better prior to transferring to the University. Some of our academic programs require a higher grade point average and specific course prerequisites. Community college of Pennsylvania students who have earned an Associate of Arts or Associate of Science degree and students who have completed 12 or more transferable credits from a State System University with a 2.00 or above have an Academic Passport that provides entry into any university in the State System of Higher Education. For more information on admissions requirements and the Academic Passport, please contact the Office Admissions at (610) 436-3411 or e-mail [ugadmiss@wcupa.edu](mailto:ugadmiss@wcupa.edu)



## Admission Application Statistics- Fall 2010

Applications, Acceptances, and Enrollment of First-Time Freshmen by Ethnicity and Gender

	Fall 2009			Fall 2010			Total	
	Male	Female	Total	Male	Female	Total	Change	% Change
<b>African American</b>								
Applied	579	1,188	1,767	674	1,257	1,931	164	9.3
Accepted	164	321	485	184	342	526	41	8.5
Enrolled	73	105	178	85	148	233	55	30.9
<b>Asian</b>								
Applied	167	214	381	162	226	388	7	1.8
Accepted	71	121	192	80	111	191	-1	-0.5
Enrolled	17	22	39	21	28	49	10	25.6
<b>Caucasian</b>								
Applied	4,109	6,536	10,645	4,457	7,347	11,804	1,159	10.9
Accepted	2,114	3,507	8,621	1,856	3,257	5,113	-3,508	-40.7
Enrolled	752	1,156	1,908	607	1,042	1,649	-259	-13.6
<b>Hispanic</b>								
Applied	176	357	533	244	431	675	142	26.6
Accepted	89	182	271	124	223	347	76	28.0
Enrolled	29	56	85	46	69	115	30	35.3
<b>Native American</b>								
Applied	9	25	34	55	79	134	100	294.1
Accepted	4	17	21	20	35	55	34	161.9
Enrolled	1	5	6	5	9	14	8	133.3
<b>NRA/Not Supplied, Multi-Racial</b>								
Applied	111	144	255	83	106	191	-64	-25.1
Accepted	33	44	77	13	23	36	-41	-53.2
Enrolled	16	9	25	4	3	7	-18	-72.0
<b>Total</b>								
Applied	<b>5,151</b>	<b>8,464</b>	<b>13,615</b>	<b>5,677</b>	<b>9,446</b>	<b>15,123</b>	<b>1,508</b>	<b>11.1</b>
Accepted	<b>2,475</b>	<b>4,192</b>	<b>6,667</b>	<b>2,277</b>	<b>3,991</b>	<b>6,268</b>	<b>-399</b>	<b>-6.0</b>
Enrolled	<b>888</b>	<b>1,353</b>	<b>2,241</b>	<b>768</b>	<b>1,299</b>	<b>2,067</b>	<b>-174</b>	<b>-7.8</b>



## First-Time, Full-Time Freshmen by Admission Type

Admittance Type	2006		2007		2008		2009		2010	
	N	%	N	%	N	%	N	%	N	%
Regular	1,564	83.0	1,568	82.5	1,564	83.0	1,847	82.4	1,713	83.1
ADP ACT 101	48	2.5	42	2.2	48	2.5	54	2.4	57	2.8
ADP Non-ACT 101	79	4.2	77	4.1	79	4.2	109	4.9	101	4.9
Special Admission	194	10.3	214	11.3	194	10.3	231	10.3	191	9.3
<b>Total</b>	<b>1,885</b>		<b>1,901</b>		<b>1,885</b>		<b>2,241</b>		<b>2,062</b>	

## SAT Score Distribution: Fall 2010

### SAT- Verbal Distribution

Score	2006		2007		2008		2009		2010	
	N	%	N	%	N	%	N	%	N	%
700 - 800	21	1.1	20	1.1	21	1.1	26	1.5	61	3.0
600 - 699	252	13.4	294	15.5	252	13.4	287	13.0	484	23.5
500 - 599	1,036	55.0	1,058	55.7	1,036	55.0	1,207	52.6	1,163	56.4
400 - 499	539	28.6	492	25.9	539	28.6	654	29.7	328	15.9
300 - 399	37	2.0	35	2.0	37	2.0	67	3.0	25	1.2
200 - 299	0	0	0	0	0	0	0	0	0	0
No Scores	0	0	2	0	0	0	0	0	1	0
<b>Total</b>	<b>1,901</b>		<b>1,885</b>		<b>1,957</b>		<b>2,241</b>		<b>2,062</b>	



### SAT- Mathematics Distribution

Score	2006		2007		2008		2009		2010	
	N	%	N	%	N	%	N	%	N	%
700 - 800	27	1.4	16	0.8	27	0.9	26	1.2	38	3.1
600 - 699	315	16.7	307	16.1	315	17.7	532	17.6	450	18.2
500 - 599	1,056	56.0	1,085	57.1	1,056	53.8	1,223	54.6	1,135	55.1
400 - 499	436	23.1	459	24.1	436	24.0	394	23.6	375	21.8
300 - 399	50	2.7	32	1.7	50	3.5	66	2.9	63	1.8
200 - 299	1	0.1	0	0.0	1	0.1	0	0	0	0
No Scores	0	0.0	2	0.1	0	0.0	0	0	1	0
<b>Total</b>	<b>1,901</b>		<b>1,885</b>		<b>1,957</b>		<b>2,241</b>		<b>2,062</b>	



## SAT Average Scores

	Critical Reading			Mathematics			Combined		
	WCU	PA	US	WCU	PA	US	WCU	PA	US
Fall 2010	544			533			1,077		
Fall 2009	523	493	501	535	501	515	1,058	1,477	1,509
Fall 2008	523	494	502	535	501	515	1,058	995	1,511
Fall 2007	525	493	502	533	499	515	1,058	992	1,511
Fall 2006	527	493	503	535	500	518	1,062	993	1,518
Fall 2005	532	501	508	535	503	520	1,067	1,004	1,028
Fall 2004	529	501	508	532	502	518	1,061	1,003	1,026
Fall 2003	528	500	507	530	502	519	1,058	1,002	1,026
Fall 2002	519	498	504	526	500	516	1,045	998	1,020
Fall 2001	522	500	506	525	499	514	1,047	999	1,020





## Feeder High Schools: Fall 2010

### Top Pennsylvania High Schools of Entering Freshmen

<i>School</i>	<i>Count</i>	<i>School</i>	<i>Count</i>
DOWNTOWN HS EAST CAMPUS	35	KENNETT HIGH SCHOOL	13
NORTH PENN HIGH SCHOOL	32	SOUDERTON AREA HIGH SCHOOL	13
AVON GROVE HIGH SCHOOL	31	STRATH HAVEN HIGH SCHOOL	13
B. REED HENDERSON HIGH SCHOOL	28	SUN VALLEY HIGH SCHOOL	13
DOWNTOWN HS WEST CAMPUS	26	OWEN J. ROBERTS HIGH SCHOOL	12
BISHOP SHANAHAN HIGH SCHOOL	25	PENNSBURY HS EAST CAMPUS	12
WEST CHESTER BAYARD RUSTIN HS	23	PERKIOMEN VALLEY HIGH SCHOOL	12
ABINGTON HIGH SCHOOL	22	EXETER TOWNSHIP SENIOR HS	11
CARDINAL O'HARA HIGH SCHOOL	22	NORRISTOWN AREA HIGH SCHOOL	11
CENTRAL BUCKS HIGH SCHOOL SOUTH	20	PENNCREST HIGH SCHOOL	11
COUNCIL ROCK HIGH SCHOOL SOUTH	20	SPRINGFIELD HIGH SCHOOL	11
HATBORO-HORSHAM SENIOR HS	20	ARCHBISHOP CARROLL HIGH SCHOOL	10
ARCHBISHOP PRENDERGAST HS	19	CENTRAL BUCKS HIGH SCHOOL EAST	10
GARNET VALLEY HIGH SCHOOL	19	CHELTENHAM HIGH SCHOOL	10
PARKLAND HIGH SCHOOL	19	CONESTOGA VALLEY SENIOR HS	10
UPPER DARBY HIGH SCHOOL	19	EAST PENNSBORO AREA HIGH SCHOOL	10
WEST CHESTER EAST HIGH SCHOOL	18	FRANKLIN LEARNING CENTER HS	10
HAVERFORD HIGH SCHOOL	17	GREAT VALLEY HIGH SCHOOL	10
UNIONVILLE HIGH SCHOOL	17	MANHEIM TOWNSHIP HIGH SCHOOL	10
WILSON HIGH SCHOOL	17	PENN MANOR HIGH SCHOOL	10
MARPLE NEWTOWN HIGH SCHOOL	16	UPPER DUBLIN HIGH SCHOOL	10
NESHAMINY HIGH SCHOOL	16	WHITEHALL HIGH SCHOOL	10
SPRING-FORD SENIOR HIGH SCHOOL	16	BISHOP MCDEVITT HIGH SCHOOL	9
BENSALEM HIGH SCHOOL	15	CENTRAL HIGH SCHOOL	9
COUNCIL ROCK HIGH SCHOOL NORTH	15	CHEROKEE HIGH SCHOOL	9
EMMAUS HIGH SCHOOL	15	EAST STROUDSBERG AREA HS SOUTH	9
NAZARETH AREA HIGH SCHOOL	15	LOWER MORELAND HIGH SCHOOL	9
RIDLEY HIGH SCHOOL	15	NAZARETH ACADEMY	9
DALLASTOWN AREA HIGH SCHOOL	14	PHILADELPHIA HS FOR GIRLS	9
COATESVILLE AREA SENIOR HS	13	SUSQUEHANNA TOWNSHIP HS	9
CONESTOGA HIGH SCHOOL	13	<b>TOTAL</b>	<b>926</b>



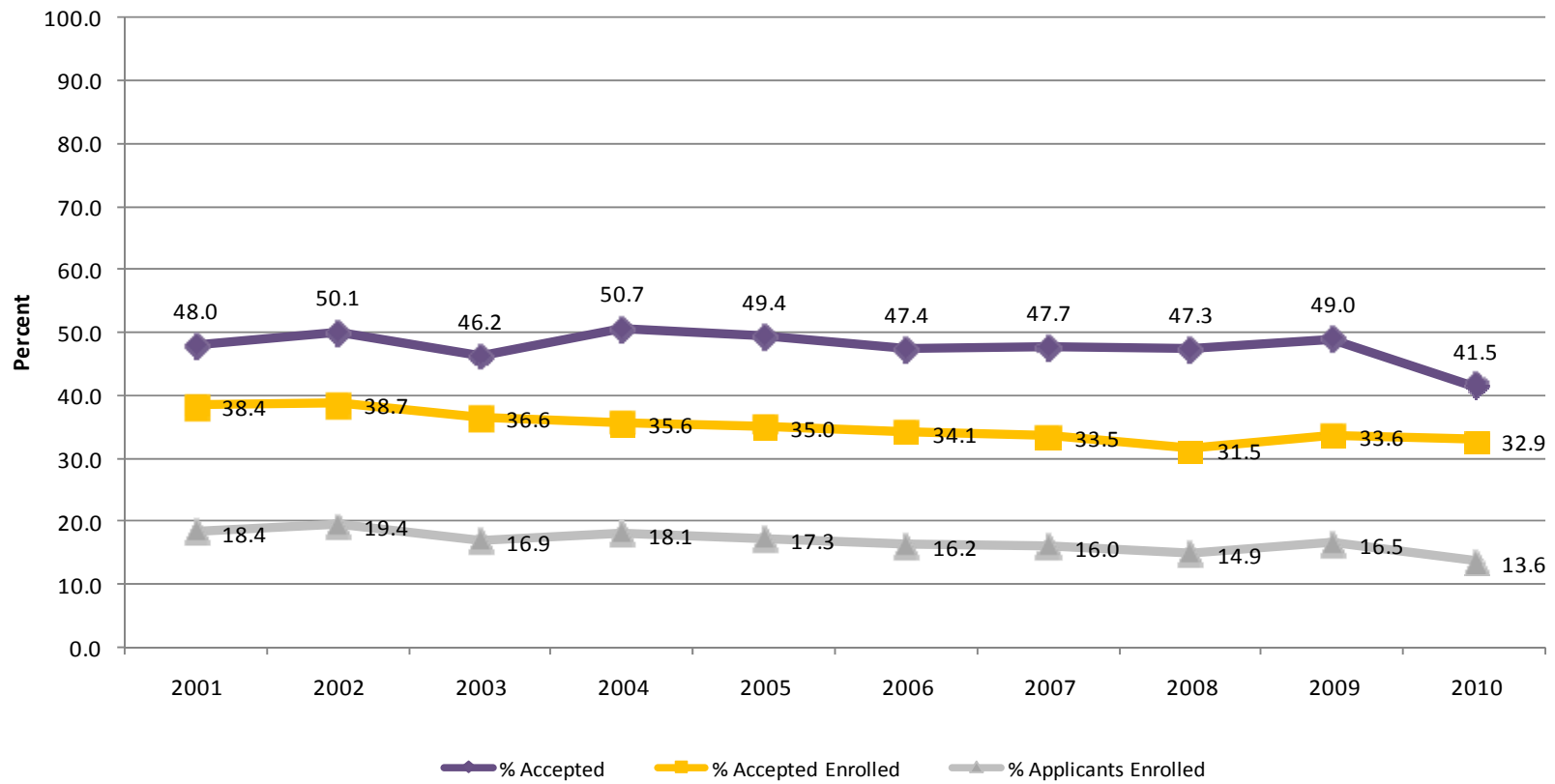
## Admission Yield Statistics: Fall 2010

### First-Time Freshmen Admission Yield

Year	# of Applicants	# Accepted	% Accepted	# Full-Time Enrolled	% Accepted Full-time Enrolled	% of Applicants Enrolled
2001	8,851	4,245	48.0	1,631	38.4	18.4
2002	9,100	4,563	50.1	1,768	38.7	19.4
2003	10,207	4,720	46.2	1,729	36.6	16.9
2004	10,401	5,273	50.7	1,879	35.6	18.1
2005	11,013	5,438	49.4	1,901	35.0	17.3
2006	11,669	5,530	47.4	1,885	34.1	16.2
2007	12,237	5,834	47.7	1,957	33.5	16.0
2008	13,353	6,317	47.2	1,993	31.5	14.9
2009	13,615	6,667	49.0	2,241	33.6	16.5
2010	15,123	6,268	41.5	2,062	32.9	13.6
<b>5-YR</b>	<b>37.32%</b>	<b>15.26%</b>	<b>-15.99%</b>	<b>8.47%</b>	<b>-6.0%</b>	<b>-21.39%</b>
<b>1-YR</b>	<b>11.08%</b>	<b>-5.98%</b>	<b>-15.31%</b>	<b>-7.99%</b>	<b>-2.1%</b>	<b>-17.58%</b>



## First-Time Freshmen Admission Yield



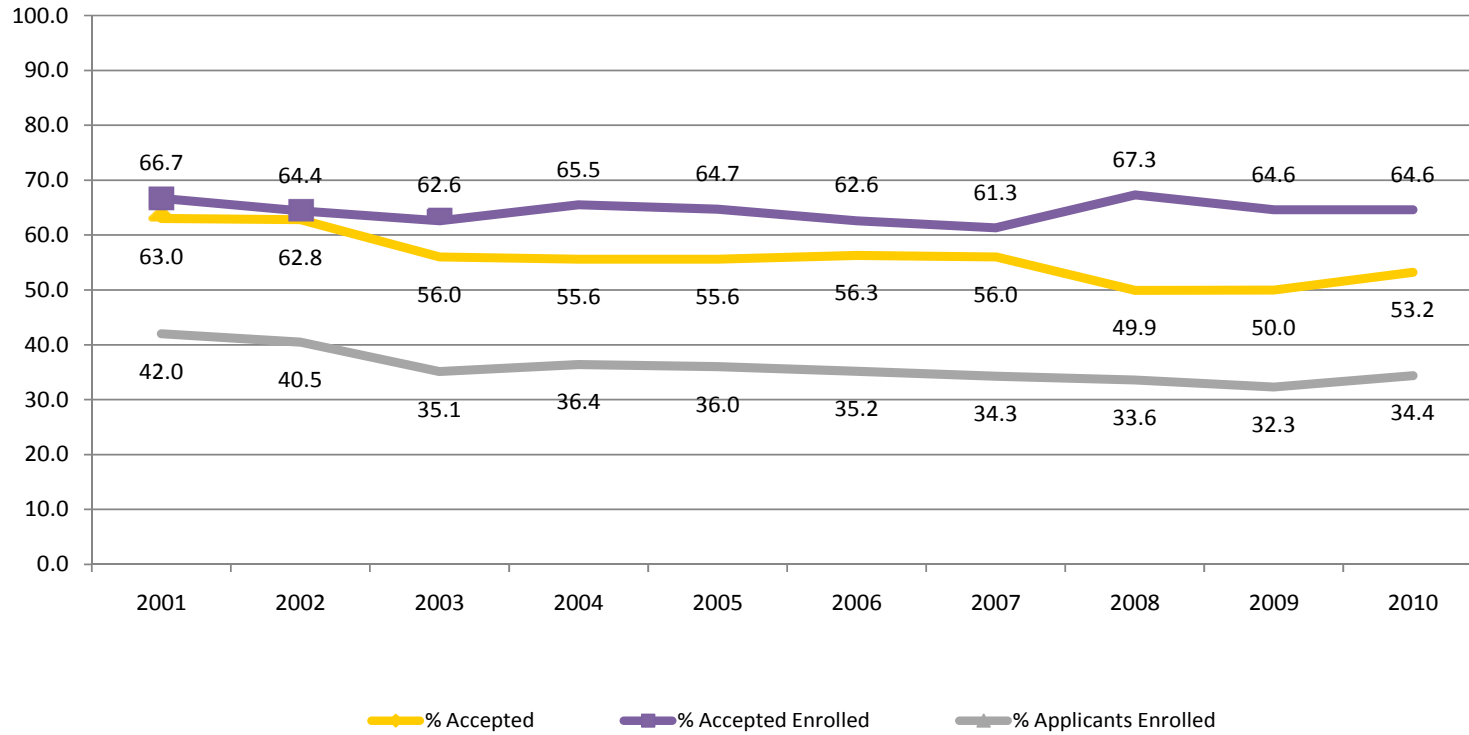
## First-Time Transfer Admission Yield

<b>Year</b>	<b># of Applicants</b>	<b># Accepted</b>	<b>% Accepted</b>	<b># Enrolled</b>	<b>% of Accepted Enrolled</b>	<b>% of Applicants Enrolled</b>
2001	2,127	1,339	63.0	893	66.7	42.0
2002	2,189	1,375	62.8	886	64.4	40.5
2003*	2,578	1,444	56.0	904	62.6	35.1
2004*	2,638	1,468	55.6	961	65.5	36.4
2005*	2,673	1,487	55.6	962	64.7	36.0
2006*	2,690	1,514	56.3	948	62.6	35.2
2007*	2,839	1,589	56.0	974	61.3	34.3
2008*	3,224	1,609	49.9	1,070	66.5	33.2
2009*	3,639	1,821	50.0	1,176	64.6	32.3
2010*	3,607	1,920	53.2	1,241	64.6	34.4
<b>5-YR</b>	<b>34.94%</b>	<b>29.12%</b>	<b>-4.32%</b>	<b>29.00%</b>	<b>-0.15%</b>	<b>6.50%</b>
<b>1-YR</b>	<b>-0.88%</b>	<b>5.44%</b>	<b>6.40%</b>	<b>5.53%</b>	<b>0.00%</b>	<b>-4.44%</b>

\* Definition of Transfer for SSHE includes those who enrolled previously as non-degree



## First-Time Transfer Admission Yield



## Feeder Colleges: Fall 2010

Top Institutions Previously Attended by New Fall Undergraduate Transfer Students  
 [Excludes students who transitioned from non-degree to degree (T7) as well as Transfers with first degree at WCU(T8)]

Name	Count	Percent of Total	Type	State
Delaware County Community College	287	23.6	2 Year Public	PA
Montgomery County Community College	145	11.9	2 Year Public	PA
Bucks County Community College	67	5.5	2 Year Public	PA
Pennsylvania St Univ University Park	62	5.1	4 Year Public	PA
Community College Philadelphia	32	2.6	2 Year Public	PA
Harrisburg Area Community College	29	2.4	2 Year Public	PA
Millersville University Pa	25	2.1	4 Year Public	PA
Shippensburg University Pa	24	2.0	4 Year Public	PA
Northampton Co Area Community College	20	1.6	2 Year Public	PA
Indiana University Pennsylvania	18	1.5	4 Year Public	PA
Temple University	17	1.4	4 Year Private	PA
Lehigh County Community College	16	1.3	2 Year Public	PA
Kutztown University	16	1.3	4 Year Public	PA
Bloomsburg University	13	1.1	4 Year Public	PA
Lock Haven University	11	0.9	4 Year Public	PA
Camden County Community College	10	0.8	2 Year Public	NJ
Brookdale Community College	9	0.7	2 Year Public	NJ
East Stroudsburg University	9	0.7	4 Year Public	PA
Gwynedd-Mercy College	8	0.7	4 Year Private	PA
Immaculata University	8	0.7	4 Year Private	PA
Reading Area Community College	8	0.7	2 Year Public	PA



# ENROLLMENT



## Head Count Enrollment by Gender and Ethnicity: Fall 2010

	Undergraduate		Graduate		Total
	Full-Time	Part-time	Full-Time	Part-time	
<b>Gender</b>					
Male	4,504	465	228	419	5,616
Female	6,636	629	566	1,045	8,876
<b>Ethnicity</b>					
African American	1,007	129	86	111	1,333
Native American	47	8	6	2	63
Asian	231	30	20	40	321
Caucasian	9,375	885	613	1,260	12,133
Hispanic	407	28	25	26	486
Non-Resident Alien, Multi-Cultural, Not supplied	73	14	44	25	156

## Head Count Enrollment by Degree Status and College: Fall 2010

	Undergraduate		Graduate		Total
	Full-Time	Part-time	Full-Time	Part-time	
<b>Degree Status</b>					
Degree Seeking	11,077	798	782	1,219	13,876
Non-degree Seeking	63	296	12	245	616
<b>College</b>					
Arts and Sciences	3,640	324	243	322	4,529
Business and Public Affairs	2,034	162	134	186	2,516
Education	1,265	30	205	498	1,998
Health Sciences	1,840	229	180	167	2,416
Visual and Performing Arts	649	36	21	50	756
Undeclared	1,712	313	11	241	2,277





## Enrollment by State: Fall 2007 to Fall 2010

STATE	Fall 2007			Fall 2008			Fall 2009			Fall 2010			Rank
	U-Grad	Grad	Total	U-Grad	Grad	Total	U-Grad	Grad	Total	U-Grad	Grad	Total	
Arizona	0	0	0	0	0	0	0	0	0	0	1	1	
Arkansas	0	0	0	0	0	0	1	0	1	1	0	1	
California	4	1	5	3	0	3	3	1	4	1	3	4	
Colorado	1	1	2	1	0	1	1	0	1	1	0	1	
Connecticut	14	2	16	15	5	20	17	4	21	13	2	15	
Delaware	142	53	195	144	52	196	138	58	196	153	57	210	3
District of Columbia	0	1	1	0	1	1	1	0	1	4	1	5	
Florida	3	0	3	1	1	2	4	1	5	4	2	6	
Georgia	1	1	2	0	0	0	0	0	0	1	2	3	
Hawaii	1	0	1	0	0	0	0	0	0	1	0	1	
Illinois	1	0	1	1	0	1	1	0	1	1	1	2	
Indiana	0	0	0	2	1	3	4	0	4	2	1	3	
Kansas	0	1	1	0	1	1	0	1	1	0	0	0	
Kentucky	1	1	2	1	0	1	0	0	0	0	0	0	
Maine	2	0	2	0	0	0	0	1	1	1	1	2	
Maryland	63	13	76	73	10	83	67	9	76	77	14	91	4
Massachusetts	6	0	6	7	0	7	5	0	5	8	1	9	
Michigan	1	1	2	0	2	2	1	1	2	0	2	2	
Minnesota	2	0	2	1	0	1	1	1	2	0	1	1	
Mississippi	0	0	0	0	0	0	0	0	0	0	0	0	
Missouri	0	0	0	0	2	2	0	1	1	0	0	0	
Montana	0	0	0	0	1	1	0	1	1	0	0	0	
Nebraska	1	0	1	0	0	0	0	0	0	0	0	0	
Nevada	0	0	0	0	0	0	0	0	0	0	0	0	
New Hampshire	3	1	4	2	1	3	1	1	2	1	1	2	
New Jersey	975	58	1,033	991	52	1,043	1,045	64	1,109	1,096	60	1,156	2
New Mexico	1	0	1	1	0	1	0	0	0	0	0	0	
New York	43	9	52	38	12	50	45	11	56	51	12	63	5
North Carolina	2	1	3	3	0	3	2	1	3	3	1	4	



## Enrollment by State: Fall 2007 to Fall 2010 (continued)

STATE	Fall 2007			Fall 2008			Fall 2009			Fall 2010			Rank
	U-Grad	Grad	Total	U-Grad	Grad	Total	U-Grad	Grad	Total	U-Grad	Grad	Total	
Ohio	2	4	6	5	3	8	5	1	6	4	0	4	
Oklahoma	0	0	0	2	0	2	0	0	0	0	1	1	
Oregon	1	1	2	1	0	1	0	0	0	0	0	0	
Pennsylvania	9,796	1,939	11,735	10,147	1,971	12,118	10,548	2,125	12,673	10,777	2,058	12,835	1
Puerto Rico	0	0	0	0	0	0	0	0	0	0	0	0	
Rhode Island	2	0	2	2	0	2	2	0	2	2	0	2	
South Carolina	3	0	3	3	0	3	4	1	5	0	1	1	
Tennessee	0	1	1	0	1	1	0	0	0	0	0	0	
Texas	2	0	2	2	0	2	2	1	3	3	1	4	
Vermont	1	0	1	0	0	0	0	0	0	0	0	0	
Virgin Islands	0	0	0	0	0	0	1	0	1	0	0	0	
Virginia	23	7	30	24	4	28	14	2	16	15	5	20	
Washington	1	0	1	0	0	0	0	0	0	0	0	0	
West Virginia	1	0	1	1	0	1	1	0	1	2	0	2	
Wisconsin	0	0	0	2	0	2	0	0	0	1	0	1	
Armed Forces	0	0	0	1	0	1	1	0	1	1	0	1	
Foreign	10	14	24	8	17	25	5	5	10	10	29	39	
<b>TOTAL</b>	<b>11,109</b>	<b>2,110</b>	<b>13,219</b>	<b>11,482</b>	<b>2,137</b>	<b>13,619</b>	<b>11,920</b>	<b>2,291</b>	<b>14,211</b>	<b>12,234</b>	<b>2,257</b>	<b>14,492</b>	
In-State	9,796	1,939	11,735	10,147	1,971	12,118	10,548	2,125	12,673	10,777	2,057	12,834	
Out-of-State	1,313	171	1,484	1,335	166	1,501	1,372	166	1,538	1,457	200	1,657	
In-State Percentage	88.2%	91.9%	88.8%	88.4%	92.2%	89.0%	88.5%	92.8%	89.2%	88.1%	91.1%	88.6%	



## Enrollment by County for Pennsylvania Residence: Fall 2010 (Top 10 Counties with Most Enrollments Ranked)

County	Total	Percent	Rank
Adams	43	0.33	
Allegheny	39	0.30	
Armstrong	2	0.02	
Beaver	7	0.05	
Berks	493	3.84	6
Blair	10	0.08	
Bradford	12	0.09	
Bucks	1184	9.22	4
Butler	2	0.02	
Cambria	4	0.03	
Cameron	2	0.02	
Carbon	31	0.24	
Centre	11	0.09	
Chester	3563	27.76	1
Clarion	6	0.05	
Clearfield	3	0.02	
Clinton	7	0.05	
Columbia	13	0.10	
Crawford	2	0.02	
Cumberland	166	1.29	
Dauphin	144	1.12	
Delaware	2294	17.87	2
Elk	2	0.02	
Erie	5	0.04	
Fayette	2	0.02	
Franklin	27	0.21	
Fulton	0	0.00	
Huntingdon	4	0.03	
Indiana	3	0.02	
Jefferson	0	0.00	
Juniata	2	0.02	
Lackawanna	144	1.12	
Lancaster	481	3.75	7

County	Total	Percent	Rank
Lawrence	1	0.01	
Lebanon	44	0.34	
Lehigh	282	2.20	8
Luzerne	124	0.97	
Lycoming	19	0.15	
McKean	1	0.01	
Mercer	3	0.02	
Mifflin	3	0.02	
Monroe	83	0.65	
Montgomery	1844	14.37	3
Montour	4	0.03	
Northampton	241	1.88	10
Northumberland	23	0.18	
Perry	16	0.12	
Philadelphia	991	7.72	5
Pike	37	0.29	
Potter	2	0.02	
Schuylkill	83	0.65	
Snyder	13	0.10	
Somerset	0	0.00	
Sullivan	2	0.02	
Susquehanna	9	0.07	
Tioga	1	0.01	
Union	11	0.09	
Venango	0	0.00	
Warren	1	0.01	
Washington	3	0.02	
Wayne	18	0.14	
Westmoreland	4	0.03	
Wyoming	4	0.03	
York	259	2.02	9
Missing	2	0.02	
<b>Total</b>	<b>12,836</b>	<b>100.00</b>	



## Head Count Enrollment: Fall 2006 to 2010 Five-Year Enrollment by Ethnicity and Gender

### Undergraduate Students

Ethnicity	2006		2007		2008		2009		2010	
	Male	Female	Male	Female	Male	Female	Male	Female	Male	Female
Caucasian	3,626	5,675	3,768	5,768	3,915	5,896	4,151	6,011	4,228	6,032
African American	308	624	328	659	336	661	371	674	413	723
Hispanic	108	193	109	193	115	226	121	253	162	273
Asian	80	130	96	124	99	131	101	134	105	156
Native American	18	12	13	19	13	21	13	23	21	34
Nonresident Alien	4	9	0	4	0	2	9	13	4	2
Not Supplied/Unknown	14	20	18	13	26	34	23	23	36	45
<b>Total</b>	<b>4,158</b>	<b>6,663</b>	<b>4,332</b>	<b>6,780</b>	<b>4,504</b>	<b>6,971</b>	<b>4,789</b>	<b>7,131</b>	<b>4,969</b>	<b>7,265</b>

### Graduate Students

Ethnicity	2006		2007		2008		2009		2010	
	Male	Female	Male	Female	Male	Female	Male	Female	Male	Female
Caucasian	433	1,410	431	1,398	477	1,361	513	1,431	523	1,350
African American	33	73	43	87	49	94	58	112	59	138
Hispanic	7	16	6	25	4	30	6	31	13	38
Asian	13	27	15	31	23	32	22	52	23	37
Native American	1	0	1	0	0	2	1	4	2	6
Nonresident Alien	22	25	40	31	32	25	24	30	24	36
Not Supplied/Unknown	1	0	2	0	1	7	2	5	3	6
<b>Total</b>	<b>510</b>	<b>1,551</b>	<b>538</b>	<b>1,572</b>	<b>586</b>	<b>1,551</b>	<b>626</b>	<b>1,665</b>	<b>647</b>	<b>1,611</b>



## Head Count Enrollment: Fall 2006 to 2010 Enrollment by College

### Undergraduate Students

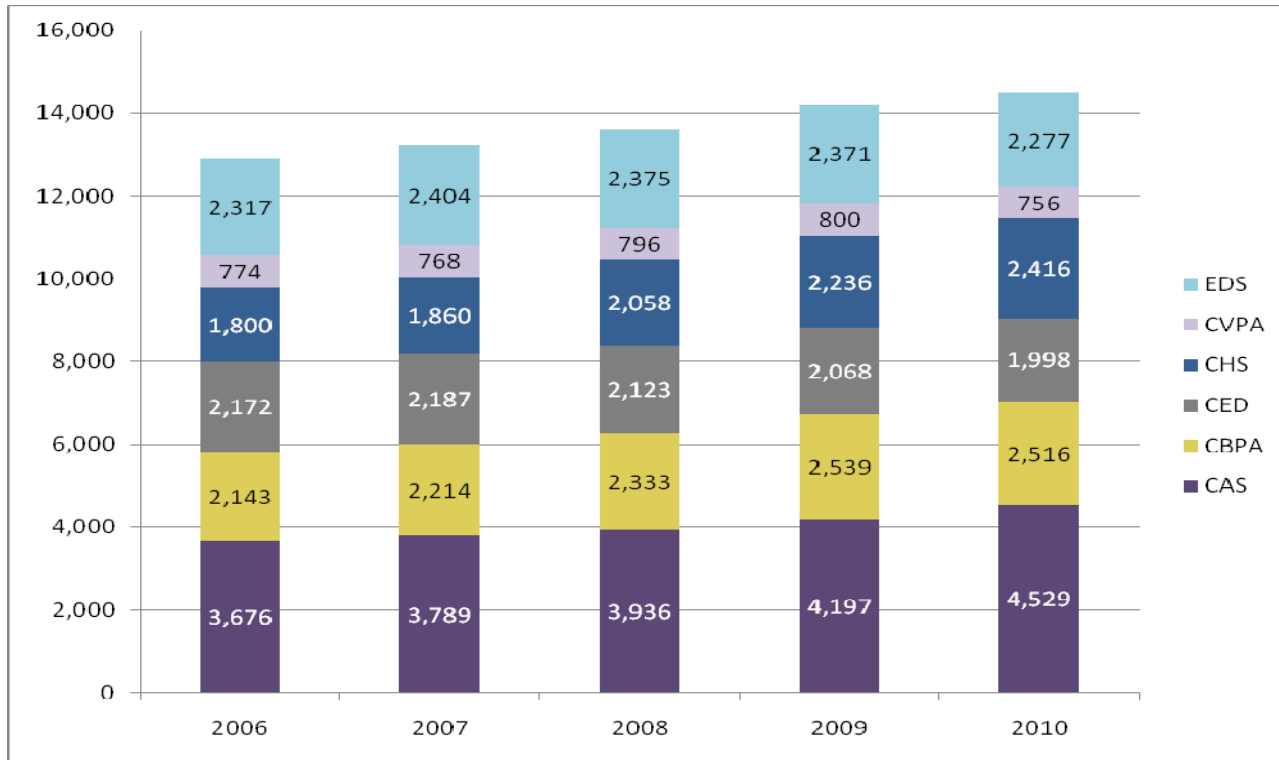
College	2006	2007	2008	2009	2010
College of Arts and Sciences	3,291	3,360	3,468	3,637	3,964
College of Business and Public Affairs	1,928	1,984	2,094	2,245	2,196
College of Education	1,447	1,400	1,371	1,330	1,295
College of Health Sciences	1,514	1,585	1,761	1,931	2,069
College of Visual & Performing Arts	717	704	728	724	685
Non-Degree/Undeclared	1,924	2,079	2,062	2,053	2,025
<b>Total</b>	<b>10,821</b>	<b>11,112</b>	<b>11,484</b>	<b>11,919</b>	<b>12,234</b>

### Graduate Students

College	2006	2007	2008	2009	2010
College of Arts and Sciences	385	429	468	560	565
College of Business and Public Affairs	215	230	239	294	320
College of Education	725	787	752	738	703
College of Health Sciences	286	275	297	305	347
College of Visual & Performing Arts	57	64	68	76	71
Non-Degree/Undeclared	393	325	313	318	252
<b>Total</b>	<b>2,061</b>	<b>2,110</b>	<b>2,137</b>	<b>2,291</b>	<b>2,258</b>



## Combined Student Enrollment by College and Schools: Fall 2006 to Fall 2010



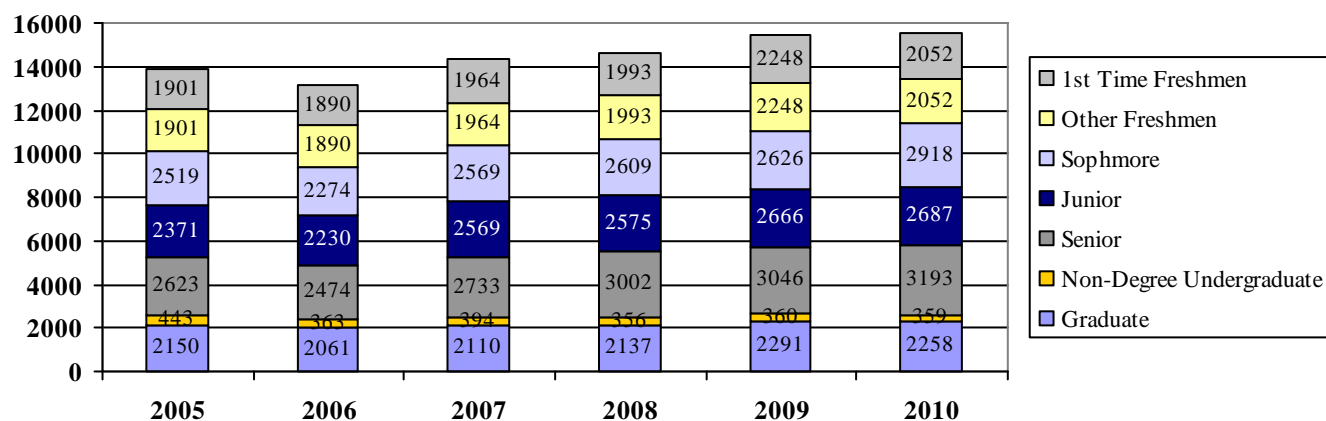
Note: Non-degree and Students with undeclared majors are depicted in EDS (Education Services).



## Head Count Enrollment by Student Level: Fall 2004 to Fall 2010

Student Level	2004	2005	2006	2007	2008	2009	2010
1 <sup>st</sup> Time Freshmen	1,879	1,901	1,890	1,964	1,993	2,248	2,052
Other Freshmen	1,396	981	1,590	884	949	974	1,025
Sophomore	2,100	2,519	2,274	2,569	2,609	2,626	2,918
Junior	2,159	2,371	2,230	2,569	2,575	2,666	2,687
Senior	2,566	2,623	2,474	2,733	3,002	3,046	3,193
Non-Degree Undergraduate	544	443	363	394	356	360	359
Graduate	2,178	2,150	2,061	2,110	2,137	2,291	2,258
<b>Total</b>	<b>12,822</b>	<b>12,988</b>	<b>12,882</b>	<b>13,223</b>	<b>13,621</b>	<b>14,211</b>	<b>14,492</b>

## Enrollment by Student Level: Fall 2002 to Fall 2010



## Credit Hours and Student FTE Enrollment FY 2005-06 to FY 2009-10

	05-06	06-07	07-08	08-09	09-10
Lower Division Full-Time Equivalent Students	6,838.0	6,670.0	6,869.0	7,057.5	7,499.0
Upper Division Full-Time Equivalent Students	3,859.0	3,894.0	4,045.0	4,284.8	4,472.0
Graduate Division Full-Time Equivalent Students	1,340.0	1,301.0	1,384.0	1,427.1	1,521.0
<b>Total Full-Time Equivalent Students</b>	<b>12,037.0</b>	<b>11,865.0</b>	<b>12,298.0</b>	<b>12,769.4</b>	<b>13,492.0</b>

	05-06	06-07	07-08	08-09	09-10
College of Arts & Sciences	176,081.0	172,757.0	176,243.0	178,910.0	190,846.0
College of Business and Public Affairs	54,913.0	53,810.0	58,345.0	59,975.0	63,522.0
College of Education	49,243.0	47,555.0	47,884.0	47,109.0	48,049.0
College of Health Sciences	42,827.0	44,369.0	48,010.0	50,811.0	55,532.0
College of Visual and Performing Arts	28,066.0	27,706.0	28,349.5	29,066.0	28,571.5
Undeclared/Non-Degree	1,939.0	1,950.0	1,906.0	1,723.0	1,926.0
<b>Total University</b>	<b>353,069.0</b>	<b>348,145.0</b>	<b>360,737.5</b>	<b>367,594.0</b>	<b>388,746.5</b>

	Lower	Upper	Total Undergraduate	Graduate	Total
College of Arts & Sciences	143,370.0	38,502.0	181,872.0	8,974.0	190,846.0
College of Business and Public Affairs	24,348.0	32,458.0	56,806.0	6,716.0	63,522.0
College of Education	9,327.0	26,074.0	35,401.0	12,648.0	48,049.0
College of Health Sciences	22,226.5	26,743.5	48,970.0	6,862.0	55,832.0
College of Visual and Performing Arts	20,123.5	6,817.0	26,940.5	1,631.0	28,571.5
Undeclared/Non-Degree	436.0	1,490.0	1,926.0	-	1,926.0
<b>Total University</b>	<b>216,831.0</b>	<b>132,084.5</b>	<b>351,915.5</b>	<b>36,831.0</b>	<b>388,746.5</b>





# RETENTION AND GRADUATION



## Retention and Graduation Rates for First-time, Full-Time, First-Year, Degree-Seeking, Student Cohorts --University Summary

Fall Cohort	N 1st Fall	2nd Fall		3rd Fall		4th Fall		5th Fall				6th Fall				7th Fall			
		Cohort Retained		Cohort Retained		Cohort Retained		Cumulative Graduated within 4 yrs*		Cohort Retained		Cumulative Graduated within 5 yrs		Cohort Retained		Cumulative Graduated within 6 yrs		Cohort Retained	
		n	% IF	n	% IF	n	% IF	n	% IF	n	% IF	n	% IF	n	% IF	n	% IF	n	% IF
1994	1364	1084	79.5	906	66.4	823	60.3	319	23.4	473	34.7	666	48.8	109	8.0	741	54.3	30	2.2
1995	1384	1129	81.6	985	71.2	902	65.2	363	26.2	512	37.0	761	55.0	89	6.4	816	59.0	33	2.4
1996	1454	1170	80.5	1003	69.0	945	65.0	376	25.9	527	36.2	771	53.0	103	7.1	833	57.3	35	2.4
1997	1577	1298	82.4	1116	70.8	1055	66.9	409	26.0	605	38.4	861	54.6	109	6.9	932	59.1	30	1.9
1998	1629	1353	83.2	1173	72.1	1070	65.8	474	29.1	577	35.5	898	55.2	108	6.6	964	59.3	34	2.1
1999	1715	1413	82.6	1219	71.3	1150	67.3	444	26.0	653	38.2	943	55.1	91	5.3	1023	59.8	24	1.4
2000	1721	1412	82.3	1275	74.3	1166	68.0	536	31.3	569	33.2	961	56.0	103	6.0	1037	60.5	35	2.0
2001	1631	1384	85.2	1222	75.2	1149	70.7	571	35.1	520	32.0	996	61.3	79	4.9	1050	64.6	29	1.8
2002	1768	1461	82.7	1290	73.0	1236	70.0	642	36.4	536	30.4	1049	59.4	97	5.5	1123	63.6	25	1.4
2003	1726	1466	85.1	1298	75.3	1207	70.1	685	39.8	481	27.9	1053	61.1	89	5.2	1121	65.1	21	1.2
2004	1874	1570	84.0	1361	72.8	1306	69.8	734	39.3	535	28.6	1153	61.7	95	5.1	1219	65.2	29	1.6
2005	1897	1607	84.8	1442	76.1	1378	72.8	813	42.9	528	27.9	1230	64.9	81	4.3				
2006	1885	1616	85.8	1467	77.9	1401	74.4	793	42.1	553	29.4								
2007	1957	1650	84.4	1511	77.3	1428	73.0												
2008	1993	1683	84.5	1517	76.2														
2009	2241	1909	85.2																
2010	2062																		

Note: Data is from PASSHE enrollment at census dates and PASSHE completions files. Includes degree sweeps and IPEDS exclusions through 10/2010



## Second-Year Retention Rates for First-Time, Full-Time, Degree-Seeking Freshmen by Race/Ethnicity

Fall Cohort	African American			Asian			Latino			Native American			Caucasian		
	N 1 <sup>st</sup> Fall	N 2 <sup>nd</sup> Fall	% Retained	N 1 <sup>st</sup> Fall	N 2 <sup>nd</sup> Fall	% Retained	N 1 <sup>st</sup> Fall	N 2 <sup>nd</sup> Fall	% Retained	N 1 <sup>st</sup> Fall	N 2 <sup>nd</sup> Fall	% Retained	N 1 <sup>st</sup> Fall	N 2 <sup>nd</sup> Fall	% Retained
2004	166	130	79.3	35	28	80.0	58	48	82.8	4	3	75.0	1609	1359	84.6
2005	171	147	87.0	38	30	78.9	66	56	84.8	3	3	100.0	1614	1367	84.7
2006	174	151	87.3	43	36	85.7	66	46	69.2	5	4	80.0	1597	1379	86.3
2007	190	151	79.5	39	35	89.7	62	44	71.0	9	9	100.0	1656	1411	85.3
2008	201	168	83.6	44	37	84.1	90	77	85.6	5	4	80.0	1648	1396	84.8
2009	178	152	85.4	39	34	87.2	85	64	75.3	6	6	100.0	1908	1631	85.5
2010	233			49			115			14			1644		

## Second-Year Retention Rates for First-Time, Full-Time, Degree-Seeking Freshmen by Gender

Fall Cohort	Male			Female		
	N 1 <sup>st</sup> Fall	N 2 <sup>nd</sup> Fall	% Retained	N 1 <sup>st</sup> Fall	N 2 <sup>nd</sup> Fall	% Retained
2004	656	543	82.8	1214	1027	84.6
2005	677	556	82.1	1217	1051	86.4
2006	683	558	81.7	1200	1058	88.2
2007	741	612	82.7	1215	1038	85.4
2008	762	635	83.4	1231	1048	85.1
2009	888	745	83.9	1353	1164	86.0
2010	767			1295		



### Four-Yr Graduation Rates for First-Time, Full-Time Freshmen by Ethnicity

Fall Cohort	African American			Asian			Latino			Native American			Caucasian		
	N 1st Fall	N Grad	% Grad	N 1st Fall	N Grad	% Grad	N 1st Fall	N Grad	% Grad	N 1st Fall	N Grad	% Grad	N 1st Fall	N Grad	% Grad
2001	138	31	22.6	37	8	21.6	48	8	16.7	7	1	14.3	1396	522	37.5
2002	142	41	28.9	37	10	27.0	42	8	19.0	8	2	25.0	1537	581	37.8
2003	182	47	25.8	25	8	32.0	58	19	32.8	1	0	0	1447	606	42.0
2004	166	39	23.8	35	13	37.1	58	14	24.1	4	1	25.0	1609	667	41.5
2005	171	51	30.2	38	13	34.2	66	26	39.4	3	1	33.3	1614	722	44.7
2006	174	41	23.7	43	14	33.3	66	18	27.3	5	1	20.0	1597	719	45.0

### Six-Yr Graduation Rates for First-Time, Full-Time Freshmen by Ethnicity

Fall Cohort	African American			Asian			Latino			Native American			Caucasian		
	N 1st Fall	N Grad	% Grad	N 1st Fall	N Grad	% Grad	N 1st Fall	N Grad	% Grad	N 1st Fall	N Grad	% Grad	N 1st Fall	N Grad	% Grad
1999	143	76	53.1	30	17	56.7	18	9	52.9	4	1	25.0	1517	917	60.6
2000	143	77	53.8	26	14	58.3	31	19	61.3	5	3	60.0	1510	921	61.2
2001	138	71	51.8	37	17	45.9	48	30	62.5	7	5	71.4	1396	924	66.4
2002	142	76	53.5	37	22	59.5	42	21	50.0	8	4	50.0	1537	999	65.1
2003	182	98	53.8	25	14	56.0	58	34	58.6	1	0	0.0	1447	969	67.1
2004	166	86	52.4	35	20	57.1	58	35	60.3	4	1	25.0	1609	1077	67.0

### Four-Yr & Six-Yr Graduation Rates for First-Time, Full-Time Freshmen by Gender

Fall Cohort	Male						Female					
	N 1st Fall	4 Yr Grad		6Yr Grad		N 1st Fall	4 Yr Grad		6 Yr Grad			
		#	%	#	%		#	%	#	%		
1999	645	122	19.0	347	54.1	1070	322	30.1	676	63.2		
2000	636	127	20.2	332	52.7	1085	409	37.7	705	65.0		
2001	608	144	23.8	344	56.8	1023	427	41.9	706	69.3		
2002	662	168	25.4	362	54.7	1106	474	42.9	761	68.9		
2003	606	152	25.2	355	58.8	1120	533	47.6	766	68.5		
2004	658	177	27.0	379	57.8	1216	557	45.9	840	69.2		
2005	678	216	31.9			1219	597	49.1				
2006	683	191	28.0			1202	602	50.1				



# ACADEMIC AND DEGREE PROGRAMS



## Undergraduate Degrees and Majors - Fall 2010

### College of Arts and Sciences

BA	American Studies
BA	Anthropology
BA, BS, BSED, TC	Biology
BS	Biology: Microbiology
BS	Biology: Ecology
BS	Biology: Medical Terminology
BS	Biology: Cell & Molecular
BS	Biochemistry
BS, BSED, TC	Chemistry
BS	Chemistry-Biology
BA	Communication Studies
BS	Computer Science
BSED, TC	Earth-Space Science
BSED	Earth-Space Science: Geology
TC	English
BA, BSED	English: Literature
BA, BSED	English: Writings
BS	Foren & Toxicol Chemistry
BA, TC	French
TC	General Science
BS	Geoscience: Earth Systems
BS	Geoscience: Geology
BA, TC	German
BA	History
BA, TC	Latin
BA	Liberal Studies: Arts & Sci.
BA	Liberal Studies: Career Pre
BA	Liberal Studies: Profession
BA	Liberal Studies: Sci/Math
BA	Literature
BA, BSED, TC	Mathematics
BS	Mathematics: Actuarial Sci.
BS	Mathematics: Finance
BS	Mathematics: Industrial
BS	Mathematics: Computational
BS	Mathematics: Statistics
BS	Pharm Product Dev

BA	Philosophy
BA	Philosophy: Religious Studies
BS, BSED, TC	Physics
BS	Physics: Engineering
BA	Psychology
BA, TC	Russian
TC	Social Studies – History
BA	Sociology
BA, TC	Spanish
BA	Women's & Gender Studies

### College of Business & Pub Affairs

BS	Accounting
BS	Business Management
BS	Criminal Justice
BS	Economics
BS	Finance
BS	Geography
BS	Geography: Environmental
BS	Geography: GIS
BS	Geography: Urban/Reg Plan.
BS	Marketing
BA	Poli Sci: Int'l Relations
BA	Political Science
BS	Pre-Business: Accounting
BS:	Pre-Business: Eco-Finance
BS	Pre-Business: Management
BS	Pre-Business: Marketing
BSW	Social Work

### College of Education

BSED, TC	Early Grades Prep, PK-4
BSED	Early Grades PK-4/Spec Ed
Cert	Educ for Sustainability
BSED, TC	Elementary Ed
BSED	Middle Grades Prep 4-8
BSED	Middle Grades 4-8/Spec Ed
TC	Special Education

### College of Health

BS, TC	Athletic Training
--------	-------------------

BA	Communicative Disorders
BS	Exercise Science Specialist
BS, TC	Health and Physical Education
BS	Health Science: General
BS	Health Science: Resp. Care
BSN, RN	Nursing
BS	Nutrition & Dietetics
BS	Pre-Chiropractic
Cert	Pre-Grad Program
BS	Pre-Occupational Therapy
BS	Pre-Physical Therapy
BS	Public Health: Environmental
BS	Public Health: Health Prom.
TC	Speech Correction

### College of Visual & Performing Arts

TC	Music Education
BM	Music Ed: Instrument
BM	Music Ed: Keyboard
BM	Music Ed: Voice
BM	Music: Composition
BM	Music: Elective Studies
BM	Music: History
BM	Music: Performance Inst
BM	Music: Performance Jazz
BM	Music: Performance Keyboard
BM	Music: Performance Voice
BM	Music: Theory & Composition
BM	Music: Theory
BFA	Studio Arts
BA	Theater and Dance: Dance
BA	Theater: Genera/
BA	Theater: Musical Theater
BA	Theater: Performance
BA	Theater: Tech Production
CERT	Leadership/Civic Engagement

### Educational Services



## Graduate Degrees and Majors - Fall 2010

### College of Arts and Sciences

MS, Cert	Applied Statistics
MS	Biology: Thesis
MS, TC	Biology
Cert	Business Ethics
TC	Chemistry
Cert	Clinical Mental Health
MA	Communication Studies
MS, Cert	Computer Science
TC	Earth-Space Science
MA	English: Non-Thesis Option
MA, TC	English
MA, MED, TC	French
TC	General Science
MA	Geoscience
MED, TC	German
Cert	Gerontology
Cert	Healthcare Ethics
MA, MED	History
MA, Cert	Holocaust & Genocide Studies
Cert	Information Systems
TC	Latin
MPA, MSA, Cert	Leadership for Women
MPA, MSA	Long-term Health Care
MA, TC	Mathematics
MA	Philosophy: Applied Ethics
MA	Philosophy: General
TC	Physics
MA	Psychology: Clinical
MA	Psychology: General
MA	Psychology: Industrial
TC	Social Studies- History
MA, MED, TC	Spanish
MA, Cert	TESLA
Cert	Web Technology

### College of Business and Pub Affairs

MBA	Business Admin: Eco-Finance
-----	-----------------------------

MBA	Business Admin: Executive
MBA, Cert	Business Admin: General
MBA	Business Admin: Management
MBA	Business Admin: Tech-Elect.
MS	Criminal Justice
MA	Geography
MPA, MSA, Cert	Human Resource Mgmt
MPA, MSA	Individualized Program
MPA, MSA, Cert	Nonprofit Administration
MPA, MSA, Cert	Public Administration
MPA, MSA, Cert	Regional Planning
MSA	Social Work
MPA, MSA	Training & Development

### College of Education

MED	Applied Studies Teacher/Lear
Cert	Assist Tech for Learning
Cert	Autism
MS	Counselor: Higher Ed/.Stu Aff
TC	Counseling
MED	Counseling: Elementary
MED	Counseling: Secondary
MED, TC	Early Childhood Ed
Cert	Educ for Sustainability
TC	Elementary Education
Cert	Entrepreneurial Education
TC	Health and Physical Education
Cert	Literacy
Cert	Literacy Coaching
Cert	Professional Couns. Lic Prep
MED, TC	Reading
MED, TC	Secondary Education
MED, TC, Cert	Special Education
TC	Speech Correction
Cert	Teaching-Learning w/Tech

### College of Health

Cert	Adapted Physical Educ
MA	Communicative Disorders

Cert	Emergency Preparedness
Cert	Health: Integrative
MED	Health: School Health
MS	Health & Phys Ed: Ath Train
Cert	Healthcare Admin
MS	Ex Sport Phys
Cert	Nursing Educ
MS	Physical Education
MPH	Public Health: Community
MPH	Public Health: Environment
MPH	Public Health: Integrative
MPH	Public Health: Nutrition
MPH	Public Health: Admin
MSN	Public Hlth Nursing: Admin
MSN	Public Hlth Nursing: Educ
MSN	Public Hlth Nursing: Integ
TC	School Nursing
MSA	Sport & Athl Admin
MPA, Cert	Sport Mgt & Athletics
TC	Speech correction

### College of Visual and Performing Arts

Cert	Kodaly Methodology
TC	Music Education
MM	Music Education: research
MM	Music Education: Performance
MM	Music Education: Technology
MA	Music History
MM	Music: Performance
MM	Music: History and Literature
MM	Music: Piano Pedagogy
MM	Music: Theory & Composition
Cert	Music Technology
Cert	Orff-Schulwerk
Cert	Piano Pedagogy



## Professional and Program Accreditations

Institutional Accreditation  
West Chester University is accredited by  
The Middle States Association of Colleges and Secondary Schools on Higher Education  
Toward Associate's, Bachelor's, Master's, and Specialist degrees.

### College of Arts and Sciences

Biology BSED and Biology Teaching Certificate --PDE, NCATE, NSTA

Chemistry BS--ACS

Chemistry BSED and Chemistry Teaching Certificate -- PDE, NCATE, NSTA

Communications Teaching Certificate -- PDE, NCATE

Computer Science BS -- ABET

Earth-Space Science BSED and Earth-Space Science Teaching Certificate -- NCATE, NSTA

Elective Social Studies, Geography, History, and Political Science Teaching Certificate--PDE, NCATE, NCSS

English BSED and English Teaching Certificate--PDE, NCATE, NCTE

Forensic & Toxicological Chemistry BS--FEPAC

French MED--NCATE, ACTFL

French Teaching Certificate--PDE, NCATE, ACTFL

General Science Teaching Certificate--PDE, NCATE, NSTA

German MED--NCATE, ACTFL

German Teaching Certificate--PDE, NCATE, ACTFL

History MED--PASSHE, NCATE, NCSS

History Teaching Certificate--PDE, NCATE, NCSS

Latin Teaching Certificate--PDE, NCATE, ACTFL





## Professional and Program Accreditations (Continued)

### College of Arts and Sciences (Continued)

Mathematics BSED and Mathematics Teaching Certificate--PDE, NCATE, NCTM

Physics BSED and Physics Teaching Certificate--PDE, NCATE, NSTA

Russian Teaching Certificate--PDE, NCATE, ACTFL

Spanish MED --NCATE

Spanish Teaching Certificate--PDE, NCATE, ACTFL

Teaching English as a Second Language MA and Teaching English as a Second Language Certificate--PDE, NCATE

### College of Business and Public Affairs

Accounting BS -- AACSB

Business Administration MBA -- AACSB

Business Management BS -- AACSB

Economics BS -- AACSB

Finance BS -- AACSB

Marketing BS -- AACSB

Social Work BSW and Social Work MSW -- CSWE

### College of Education

Counseling: Elementary School Counseling MED--PDE, NCATE, CACREP

Counseling: Higher Education/Student Affairs MS--CACREP

Counseling: Secondary School Counseling MED--PDE, NCATE, CACREP

Counseling (Elementary or Secondary) Specialist I Certificate -- PDE, NCATE, CACREP

Early Childhood Education BSED and Early Childhood Education Teaching Certificate -- PDE, NCATE, NAEYC



## Professional and Program Accreditations (Continued)

### College of Education (Continued)

Early Childhood Education MED -- PASSHE, NCATE, NAEYC

Elementary Education BSED and Elementary Education Teaching Certificate -- PDE, NCATE, ACEI

Elementary Education MED -- PASSHE, NCATE, ACEI

Reading MED and Reading Specialist Certificate -- PDE, NCATE, IRA

Secondary Education MED -- NCATE

Special Education BSED and Special Education Teaching Certificate -- PDE, NCATE, CEC

Special Education MED -- PASSHE, NCATE, CEC

### College of Health Sciences

Athletic Training BS -- CAATE

Communicative Disorders Speech Correction Teaching Certificate--PDE, NCATE

Communicative Disorders MA – NCATE, ASHA

Health: School Health MED -- AAHE

Health & Physical Education BS and Health & Physical Education Teaching Certificate -- PDE, NCATE, NASPE

Health & Physical Education: Exercise Physiology MS -- COAES

Health Science: Respiratory Care BS -- CAAHEP

Nursing BSN and Nursing MSN and Nursing Education Certificate -- CCNE

Nursing: Parish Nurse – In moratorium

Nursing: RN to BSN -- CCNE

Nutrition and Dietetics BS -- CADE

Public Health MPH -- CEPH

School Nursing Certificate--PDE, NCATE, CCNE and will also be going into moratorium



## Professional and Program Accreditations (Continued)

### College of Visual and Performing Arts

Music Education: Instrumental BM--PDE, NCATE, NASM

Music Education: Keyboard BM--PDE, NCATE, NASM

Music Education: Voice BM--PDE, NCATE, NASM

Music Education: Music Technology MM -- NCATE, NASM

Music Education: Orff-Schulwerk MM – NCATE, NASM. AOSA

Music Education: Performance MM and Research Report MM – NCATE. NASM, OAKE

Music Education Teaching Certificate--PDE, NCATE, NASM

Music: Elective Studies BM--NASM

Music History MA--NASM

Music-Performance BM--NASM

Music Performance MM--NASM

Music: Piano Pedagogy MM--NASM

Music: Theory & Composition BM and Music: Theory & Composition MM--NASM

Studio Arts BA and Studio Arts BFA--Beginning the process of NASAD accreditation

Theatre Arts: General BA--Beginning the process of NAST accreditation

Theatre Arts: Music Theatre BA--Beginning the process of NAST accreditation

Theatre Arts: Performance BA--Beginning the process of NAST accreditation

Theatre Arts: Technical Production BA--Beginning the process of NAST accreditation



# DEGREES CONFERRED



## Undergraduate and Graduate Degrees Conferred: Academic Years 2003-2004 through 2009-2010

Academic Plan	Degree Year						
	2003-04	2004-05	2005-06	2006-07	2007-08	2008-09	2009-10
<b>College of Arts and Sciences</b>							
<b>Anthropology and Sociology</b>							
Undergraduate							
Anthropology BA	7	7	5	3	11	15	11
Anthropology-Sociology BA	1	0	0	0	0	0	0
Sociology BA	29	20	18	24	19	30	24
<b>Total Undergraduate</b>	<b>37</b>	<b>27</b>	<b>23</b>	<b>27</b>	<b>30</b>	<b>45</b>	<b>35</b>
Graduate							
Long-Term Health Care MSA	3	1	3	1	0	0	0
<b>Total Graduate</b>	<b>3</b>	<b>1</b>	<b>3</b>	<b>1</b>	<b>0</b>	<b>0</b>	<b>0</b>
<b>Department Totals</b>	<b>40</b>	<b>28</b>	<b>26</b>	<b>28</b>	<b>30</b>	<b>45</b>	<b>35</b>
<b>Art</b>							
Undergraduate							
Studio Arts BA	7	See College of Visual and Performing Arts					
Studio Arts BFA	47						
<b>Total Undergraduate</b>	<b>54</b>						
<b>Department Totals</b>	<b>54</b>						
<b>Biology</b>							
Undergraduate							
Biology BA	0	3	3	0	3	2	1
Biology BSED	6	2	6	4	8	8	6
Biology BS	17	12	14	17	19	34	28
Biology: Microbiology BS	8	3	3	3	5	7	6
Biology: Ecology BS	6	5	5	3	1	2	3
Biology: Medical Technology BS	2	2	1	1	1	1	1
Biology: Cell & Molecular BS	9	10	5	8	10	7	3
<b>Total Undergraduate</b>	<b>48</b>	<b>37</b>	<b>37</b>	<b>36</b>	<b>47</b>	<b>61</b>	<b>48</b>
Graduate							
Biology MS	2	0	4	7	6	5	3
Biology - Thesis MS	4	1	2	2	3	6	3
<b>Total Graduate</b>	<b>6</b>	<b>1</b>	<b>6</b>	<b>9</b>	<b>9</b>	<b>11</b>	<b>6</b>
<b>Department Totals</b>	<b>54</b>	<b>38</b>	<b>43</b>	<b>45</b>	<b>56</b>	<b>72</b>	<b>54</b>

## Undergraduate and Graduate Degrees Conferred: Academic Years 2003-2004 through 2009-2010

Academic Plan	Degree Year						
	2003-04	2004-05	2005-06	2006-07	2007-08	2008-09	2009-10
<b>Chemistry</b>							
Undergraduate							
Chemistry BSED	1	4	1	1	0	4	2
Chemistry-Biology * BS	3	3	5	16	7	14	5
Chemistry BS	3	0	4	4	7	7	7
Biochemistry BS	2	0	0	3	3	3	1
Foreign & Toxicology Chemistry BS	9	11	15	15	7	7	10
<b>Total Undergraduate</b>	<b>18</b>	<b>18</b>	<b>25</b>	<b>39</b>	<b>24</b>	<b>35</b>	<b>25</b>
Graduate							
Physical Science: Chemistry MA	1	0	0	0	0	0	0
Chemistry MED	0	1	0	0	0	0	0
Chemistry MS	2	0	1	0	0	0	0
Clinical Chemistry MS	1	4	0	1	1	0	0
<b>Total Graduate</b>	<b>4</b>	<b>5</b>	<b>1</b>	<b>1</b>	<b>1</b>	<b>0</b>	<b>0</b>
<b>Department Totals</b>	<b>22</b>	<b>23</b>	<b>26</b>	<b>40</b>	<b>25</b>	<b>35</b>	<b>25</b>
<b>Communications Studies</b>							
Undergraduate							
Communication Studies BA	88	123	130	114	106	116	122
Communication-Comm/Tha BSED	2	0	1	0	0	0	0
Communication-Theatre/Med BSED	1	0	0	0	0	0	0
Communication-Theatre/Med BSED	0	0	0	0	0	2	0
<b>Total Undergraduate</b>	<b>91</b>	<b>123</b>	<b>131</b>	<b>114</b>	<b>106</b>	<b>118</b>	<b>122</b>
Graduate							
Communication Studies MA	7	10	4	9	6	13	7
<b>Total Graduate</b>	<b>7</b>	<b>10</b>	<b>4</b>	<b>9</b>	<b>6</b>	<b>13</b>	<b>7</b>
<b>Department Totals</b>	<b>98</b>	<b>133</b>	<b>135</b>	<b>123</b>	<b>112</b>	<b>131</b>	<b>129</b>

## Undergraduate and Graduate Degrees Conferred: Academic Years 2003-2004 through 2009-2010

Academic Plan	Degree Year						
	2003-04	2004-05	2005-06	2006-07	2007-08	2008-09	2009-10
<b>Computer Science</b>							
Undergraduate							
Computer Science BS	30	33	28	19	21	32	33
<b>Total Undergraduate</b>	<b>30</b>	<b>33</b>	<b>28</b>	<b>19</b>	<b>21</b>	<b>32</b>	<b>33</b>
Graduate							
Computer Science MS	13	12	15	12	9	10	11
<b>Total Graduate</b>	<b>13</b>	<b>12</b>	<b>15</b>	<b>12</b>	<b>9</b>	<b>10</b>	<b>11</b>
<b>Department Totals</b>	<b>43</b>	<b>45</b>	<b>43</b>	<b>31</b>	<b>30</b>	<b>42</b>	<b>44</b>
<b>English</b>							
Undergraduate							
Comparative Literature BA	3	0	5	2	0	0	0
Literature BA	35	38	36	45	12	7	0
English BA: Literature	0	0	0	0	36	59	45
English BA: Writings	0	0	0	0	0	0	12
English BSED: Literature	13	21	28	25	28	34	33
English BSED: Writings	0	0	0	0	0	0	2
<b>Total Undergraduate</b>	<b>51</b>	<b>59</b>	<b>69</b>	<b>72</b>	<b>76</b>	<b>100</b>	<b>92</b>
Graduate							
English MA	10	17	19	24	32	24	24
Writing, Teaching & Criticism MA	0	0	0	1	0	0	0
TESL MA	17	11	16	26	13	14	7
English - Non-Thesis Option MA	2	0	1	0	0	0	0
<b>Total Graduate</b>	<b>29</b>	<b>28</b>	<b>36</b>	<b>51</b>	<b>45</b>	<b>38</b>	<b>31</b>
<b>Department Totals</b>	<b>80</b>	<b>87</b>	<b>105</b>	<b>123</b>	<b>121</b>	<b>138</b>	<b>123</b>

## Undergraduate and Graduate Degrees Conferred: Academic Years 2003-2004 through 2009-2010

Academic Plan	Degree Year						
	2003-04	2004-05	2005-06	2006-07	2007-08	2008-09	2009-10
<b>Geology &amp; Astronomy</b>							
Undergraduate							
Earth-Space Science - Environmental BSED	1	0	0	0	0	0	0
Earth-Space Science BSED	3	1	3	7	5	5	2
Earth-Space Science - Geology BSED	5	6	2	0	0	0	0
Geoscience - Earth Systems BS	3	3	2	7	3	9	5
Geoscience: Geology BS	5	3	4	6	7	4	6
Geoscience: Environ Geoscience BS	1	0	0	0	0	1	0
<b>Total Undergraduate</b>	<b>18</b>	<b>13</b>	<b>11</b>	<b>20</b>	<b>15</b>	<b>19</b>	<b>13</b>
Graduate							
Physical Science: Earth Science MA	4	6	2	3	6	4	7
<b>Total Graduate</b>	<b>4</b>	<b>6</b>	<b>2</b>	<b>3</b>	<b>6</b>	<b>4</b>	<b>7</b>
<b>Department Totals</b>	<b>22</b>	<b>19</b>	<b>13</b>	<b>23</b>	<b>21</b>	<b>23</b>	<b>20</b>
<b>Foreign Language</b>							
Undergraduate							
French BA	3	1	3	4	4	8	5
German BA	0	0	0	1	5	5	2
Latin BA	0	0	0	1	1	3	1
Russian BA	2	2	0	1	3	3	2
Spanish BA	5	11	12	12	16	13	26
French BSED	2	2	0	0	0	0	0
German BSED	0	1	0	0	0	0	0
Spanish BSED	5	5	3	1	0	1	0
<b>Total Undergraduate</b>	<b>17</b>	<b>22</b>	<b>18</b>	<b>20</b>	<b>29</b>	<b>33</b>	<b>36</b>



## Undergraduate and Graduate Degrees Conferred: Academic Years 2003-2004 through 2009-2010

Academic Plan	Degree Year						
	2003-04	2004-05	2005-06	2006-07	2007-08	2008-09	2009-10
<b>Foreign Language (continued)</b>							
Graduate							
French MA	0	0	1	2	3	3	2
Spanish MA	0	1	1	3	0	2	3
French MED	0	2	1	0	0	1	1
Spanish MED	0	1	3	2	0	2	0
Total Graduate	0	4	6	7	3	8	6
Department Totals	17	26	24	27	32	41	42
<b>History</b>							
Undergraduate							
American Studies BA	2	4	4	0	2	0	0
History BA	23	56	65	62	68	81	84
Social Studies: History BSED	25	9	8	2	0	0	0
Total Undergraduate	50	69	77	64	70	81	84
Graduate							
History MA	8	7	10	10	6	6	10
Holocaust & Genocide Studies MA	2	4	2	2	6	6	6
History MED	0	0	1	5	0	1	2
Total Graduate	10	11	13	17	12	13	18
Department Totals	60	80	90	81	82	94	102
<b>Liberal Studies</b>							
Undergraduate							
Liberal Studies: Arts & Science BA	4	16	18	19	24	23	24
Liberal Studies: Career Pre BA	29	16	6	1	2	0	2
Pharmaceutical Product Dev BS	7	9	8	11	6	11	10
Liberal Studies: Science /Math BS	9	7	8	5	6	9	8
Liberal Studies: Profession BS	107	138	187	179	187	247	160
Total Undergraduate	156	186	227	215	225	290	204
Department Totals	156	186	227	215	225	290	204

## Undergraduate and Graduate Degrees Conferred: Academic Years 2003-2004 through 2009-2010

Academic Plan	Degree Year						
	2003-04	2004-05	2005-06	2006-07	2007-08	2008-09	2009-10
<b>Mathematics</b>							
Undergraduate							
Mathematics BA	4	6	4	6	5	3	5
Mathematics-Computer Science BA	1	0	0	0	0	0	0
Mathematics BS	0	0	0	0	9	9	13
Mathematics BSED	12	13	19	24	16	19	14
<b>Total Undergraduate</b>	<b>17</b>	<b>19</b>	<b>23</b>	<b>30</b>	<b>30</b>	<b>31</b>	<b>32</b>
Graduate							
Mathematics MA	2	7	3	5	2	9	7
Applied Statistics MS	0	3	11	9	21	25	24
<b>Total Graduate</b>	<b>2</b>	<b>10</b>	<b>14</b>	<b>14</b>	<b>23</b>	<b>34</b>	<b>31</b>
<b>Department Totals</b>	<b>19</b>	<b>29</b>	<b>37</b>	<b>44</b>	<b>53</b>	<b>65</b>	<b>63</b>
<b>Philosophy</b>							
Undergraduate							
Philosophy BA	6	9	7	6	7	11	11
Philosophy-Religious Studies BA	1	2	1	1	1	2	3
<b>Total Undergraduate</b>	<b>7</b>	<b>11</b>	<b>8</b>	<b>7</b>	<b>8</b>	<b>13</b>	<b>14</b>
Graduate							
Philosophy MA: Applied Ethics	0	0	0	0	0	0	1
Philosophy MA: General	6	5	5	5	3	1	4
<b>Total Graduate</b>	<b>6</b>	<b>5</b>	<b>5</b>	<b>5</b>	<b>3</b>	<b>1</b>	<b>5</b>
<b>Department Totals</b>	<b>13</b>	<b>16</b>	<b>13</b>	<b>12</b>	<b>11</b>	<b>14</b>	<b>19</b>
<b>Physics</b>							
Undergraduate							
Physics BSED	1	0	2	1	2	1	1
Physics BS	4	0	3	4	1	5	5
Physics-Engineering BS	0	1	2	0	0	0	1
<b>Total Undergraduate</b>	<b>5</b>	<b>1</b>	<b>7</b>	<b>5</b>	<b>3</b>	<b>6</b>	<b>7</b>
<b>Department Totals</b>	<b>5</b>	<b>1</b>	<b>7</b>	<b>5</b>	<b>3</b>	<b>6</b>	<b>7</b>

## Undergraduate and Graduate Degrees Conferred: Academic Years 2003-2004 through 2009-2010

Academic Plan	Degree Year						
	2003-04	2004-05	2005-06	2006-07	2007-08	2008-09	2009-10
<b>Psychology</b>							
Undergraduate							
Psychology BA	96	102	106	111	125	130	125
Social Studies: Psychology BSED	1	0	0	0	0	0	0
<b>Total Undergraduate</b>	<b>97</b>	<b>102</b>	<b>106</b>	<b>111</b>	<b>125</b>	<b>130</b>	<b>125</b>
Graduate							
Psychology: Clinical MA	13	23	18	14	16	21	32
Psychology: General MA	1	0	2	3	2	2	1
Psychology: Industrial MA	12	9	5	4	14	7	12
<b>Total Graduate</b>	<b>26</b>	<b>32</b>	<b>25</b>	<b>21</b>	<b>32</b>	<b>30</b>	<b>45</b>
<b>Department Totals</b>	<b>123</b>	<b>134</b>	<b>131</b>	<b>132</b>	<b>157</b>	<b>160</b>	<b>170</b>
<b>Theatre Arts</b>							
Undergraduate							
Theatre Arts: Performance BA	5						
Theatre Arts: Music Theatre BA	2	See College of Visual and Performing Arts					
Theatre Arts: General BA	2						
<b>Total Undergraduate</b>	<b>9</b>						
<b>Department Totals</b>	<b>9</b>						
<b>Women's Studies</b>							
Undergraduate							
Women's Studies BA	6	3	5	3	3	4	3
<b>Total Undergraduate</b>	<b>6</b>	<b>3</b>	<b>5</b>	<b>3</b>	<b>3</b>	<b>4</b>	<b>3</b>
Graduate							
Leadership for Women MSA	0	1	1	0	1	0	0
<b>Total Graduate</b>	<b>0</b>	<b>1</b>	<b>1</b>	<b>0</b>	<b>1</b>	<b>0</b>	<b>0</b>
<b>Department Totals</b>	<b>6</b>	<b>4</b>	<b>6</b>	<b>3</b>	<b>4</b>	<b>4</b>	<b>3</b>
<i>College of Arts and Sciences Undergraduate Totals</i>	711	723	795	782	812	998	873
<i>College of Arts and Sciences Graduate Totals</i>	110	126	131	150	150	162	167
<i>College of Arts and Sciences Totals</i>	821	849	926	932	962	1160	1040

## Undergraduate and Graduate Degrees Conferred: Academic Years 2003-2004 through 2009-2010

Academic Plan	Degree Year						
	2003-04	2004-05	2005-06	2006-07	2007-08	2008-09	2009-10
<b>College of Business and Public Affairs</b>							
<b>Accounting</b>							
Undergraduate							
Accounting BS	66	48	57	56	63	91	104
Total Undergraduate	66	48	57	56	63	91	104
Department Totals	66	48	57	56	63	91	104
<b>Criminal Justice</b>							
Undergraduate							
Criminal Justice BS	107	97	118	84	70	86	109
Total Undergraduate	107	97	118	84	70	86	109
Graduate							
Criminal Justice - Thesis MS	1	1	0	0	0	0	0
Criminal Justice MS	9	12	12	11	12	18	19
Total Graduate	10	13	12	11	12	18	128
Department Totals	117	110	130	95	82	104	
<b>Economics and Finance</b>							
Undergraduate							
Economics BS	4	6	7	4	8	4	8
Finance BS	49	46	47	40	52	69	67
Total Undergraduate	53	52	54	44	60	73	75
Graduate							
Bus Admin: Economics-Finance MBA	2	11	14	5	6	7	5
Total Graduate	2	11	14	5	6	7	5
Department Totals	55	63	68	49	66	80	80

## Undergraduate and Graduate Degrees Conferred: Academic Years 2003-2004 through 2009-2010

Academic Plan	Degree Year						
	2003-04	2004-05	2005-06	2006-07	2007-08	2008-09	2009-10
<b>Geography</b>							
Undergraduate							
Geography BA	6	5	11	5	9	13	9
Geography-Urban/Regional PI BA	3	3	1	2	5	1	5
Geography-Geographic Analyses BA	4	4	3	1	5	1	1
<b>Total Undergraduate</b>	<b>13</b>	<b>12</b>	<b>15</b>	<b>8</b>	<b>19</b>	<b>15</b>	<b>15</b>
Graduate							
Geography MA	14	4	9	6	7	13	8
Regional Planning MSA	1	3	1	0	0	3	0
<b>Total Graduate</b>	<b>15</b>	<b>7</b>	<b>10</b>	<b>6</b>	<b>7</b>	<b>16</b>	<b>8</b>
<b>Department Totals</b>	<b>28</b>	<b>19</b>	<b>25</b>	<b>14</b>	<b>26</b>	<b>31</b>	<b>23</b>
<b>Political Science</b>							
Undergraduate							
Political Science-Applied Pub Policy BA	4	6	1	0	3	1	1
Political Science - Int'l Relations BA	17	11	18	10	14	19	17
Political Science BA	32	46	48	44	46	50	35
Social Studies: Geography BSED	0	1	0	0	0	0	0
Social Studies: Political Science BSED	1	0	0	0	0	0	0
<b>Total Undergraduate</b>	<b>54</b>	<b>64</b>	<b>67</b>	<b>54</b>	<b>63</b>	<b>70</b>	<b>53</b>
Graduate							
Human Resource Mgmt. MSA	8	5	4	6	0	0	0
Individualized Program MSA	4	3	3	2	3	4	1
Human Resource Mgmt. MSA	0	0	0	0	9	3	10
Public Administration MSA	1	2	1	5	5	0	4
Training & Developmental MSA	2	0	3	1	0	1	2
Nonprofit Administration MSA	0	0	0	0	0	1	5
<b>Total Graduate</b>	<b>15</b>	<b>10</b>	<b>11</b>	<b>14</b>	<b>17</b>	<b>9</b>	<b>22</b>
<b>Department Totals</b>	<b>69</b>	<b>74</b>	<b>78</b>	<b>68</b>	<b>80</b>	<b>79</b>	<b>75</b>

## Undergraduate and Graduate Degrees Conferred: Academic Years 2003-2004 through 2009-2010

Academic Plan	Degree Year						
	2003-04	2004-05	2005-06	2006-07	2007-08	2008-09	2009-10
<b>Management</b>							
Undergraduate							
Business Management BS	126	131	125	132	109	136	124
<b>Total Undergraduate</b>	<b>126</b>	<b>131</b>	<b>125</b>	<b>132</b>	<b>109</b>	<b>136</b>	<b>124</b>
Graduate							
Bus Admin: General MBA	2	4	12	8	15	16	28
Bus Admin: Management MBA	6	10	10	15	5	1	1
Bus Admin: Executive MBA	13	18	0	0	0	0	1
<b>Total Graduate</b>	<b>21</b>	<b>32</b>	<b>22</b>	<b>23</b>	<b>20</b>	<b>17</b>	<b>30</b>
<b>Department Totals</b>	<b>147</b>	<b>163</b>	<b>147</b>	<b>155</b>	<b>129</b>	<b>153</b>	<b>154</b>
<b>Marketing</b>							
Undergraduate							
Marketing BS	105	99	92	89	74	112	95
<b>Total Undergraduate</b>	<b>105</b>	<b>99</b>	<b>92</b>	<b>89</b>	<b>74</b>	<b>112</b>	<b>95</b>
Graduate							
Bus Admin: Tech-Electronic MBA	30	12	5	4	4	1	1
<b>Total Graduate</b>	<b>30</b>	<b>12</b>	<b>5</b>	<b>4</b>	<b>4</b>	<b>1</b>	<b>1</b>
<b>Department Totals</b>	<b>135</b>	<b>111</b>	<b>97</b>	<b>93</b>	<b>78</b>	<b>113</b>	<b>96</b>
<b>Social Work</b>							
Undergraduate							
Social Work BSW	31	49	38	42	43	39	33
<b>Total Undergraduate</b>	<b>31</b>	<b>49</b>	<b>38</b>	<b>42</b>	<b>43</b>	<b>39</b>	<b>33</b>
Graduate							
Social Work MSW	17	28	37	32	40	30	29
<b>Total Graduate</b>	<b>17</b>	<b>28</b>	<b>37</b>	<b>32</b>	<b>40</b>	<b>30</b>	<b>29</b>
<b>Department Totals</b>	<b>48</b>	<b>77</b>	<b>75</b>	<b>74</b>	<b>83</b>	<b>69</b>	<b>62</b>
<i>College of Business and Public Affairs Undergraduate Totals</i>	<i>555</i>	<i>552</i>	<i>566</i>	<i>509</i>	<i>501</i>	<i>622</i>	<i>608</i>
<i>College of Business and Public Affairs Graduate Totals</i>	<i>110</i>	<i>113</i>	<i>111</i>	<i>95</i>	<i>106</i>	<i>98</i>	<i>114</i>
<i>College of Business and Public Affairs Totals</i>	<i>665</i>	<i>665</i>	<i>677</i>	<i>604</i>	<i>607</i>	<i>720</i>	<i>722</i>

## Undergraduate and Graduate Degrees Conferred: Academic Years 2003-2004 through 2009-2010

Academic Plan	Degree Year						
	2003-04	2004-05	2005-06	2006-07	2007-08	2008-09	2009-10
<b>College of Education</b>							
<b>Counseling and Educational Psychology</b>							
Graduate							
Counseling: Elementary MED	20	17	14	16	18	26	16
Counseling: Secondary MED	17	19	26	29	32	32	32
Counseling: Higher Ed/Stu Affairs MS	27	29	31	23	27	16	18
<b>Total Graduate</b>	<b>64</b>	<b>65</b>	<b>71</b>	<b>68</b>	<b>77</b>	<b>74</b>	<b>66</b>
<b>Department Totals</b>	<b>64</b>	<b>65</b>	<b>71</b>	<b>68</b>	<b>77</b>	<b>74</b>	<b>66</b>
<b>Early Childhood and Special Education</b>							
Undergraduate							
Early Childhood Education BSED	51	50	48	38	37	44	49
Special Education BSED	53	60	50	52	62	73	83
<b>Total Undergraduate</b>	<b>104</b>	<b>110</b>	<b>98</b>	<b>90</b>	<b>99</b>	<b>117</b>	<b>132</b>
Graduate							
Special Education MED	6	17	22	20	30	21	23
Early Childhood Education MED	0	0	0	2	2	17	22
<b>Total Graduate</b>	<b>6</b>	<b>17</b>	<b>22</b>	<b>22</b>	<b>32</b>	<b>38</b>	<b>45</b>
<b>Department Totals</b>	<b>110</b>	<b>127</b>	<b>120</b>	<b>112</b>	<b>131</b>	<b>155</b>	<b>177</b>
<b>Elementary Education</b>							
Undergraduate							
Elementary Education BSED	256	241	235	267	214	234	243
<b>Total Undergraduate</b>	<b>256</b>	<b>241</b>	<b>235</b>	<b>267</b>	<b>214</b>	<b>234</b>	<b>243</b>
Graduate							
Elementary Education MED	40	46	26	33	40	36	35
<b>Total Graduate</b>	<b>40</b>	<b>46</b>	<b>26</b>	<b>33</b>	<b>40</b>	<b>36</b>	<b>35</b>
<b>Department Totals</b>	<b>296</b>	<b>287</b>	<b>261</b>	<b>300</b>	<b>254</b>	<b>270</b>	<b>278</b>
<b>Literacy</b>							
Graduate							
Reading MED	61	50	40	56	40	42	54
<b>Total Graduate</b>	<b>61</b>	<b>50</b>	<b>40</b>	<b>56</b>	<b>40</b>	<b>42</b>	<b>54</b>
<b>Department Totals</b>	<b>61</b>	<b>50</b>	<b>40</b>	<b>56</b>	<b>40</b>	<b>42</b>	<b>54</b>

## Undergraduate and Graduate Degrees Conferred: Academic Years 2003-2004 through 2009-2010

Academic Plan	Degree Year						
	2003-04	2004-05	2005-06	2006-07	2007-08	2008-09	2009-10
<b>Professional and Secondary Education</b>							
Graduate							
Secondary Education MED	11	11	14	14	16	29	11
Educational Research MS	2	0	0	4	1	0	0
Total Graduate	13	11	14	18	17	29	11
Department Totals	13	11	14	18	17	29	11
<i>College of Education Undergraduate Totals</i>	360	351	333	357	313	351	375
<i>College of Education Graduate Totals</i>	184	189	173	197	206	219	211
<i>College of Education Totals</i>	544	540	506	554	519	570	586
<b>College of Health Sciences</b>							
<b>Health</b>							
Undergraduate							
Public Health: Health Promotion BS	30	12	15	13	26	13	16
Public Health: Environmental BS	1	1	3	2	4	7	8
Nutrition and Dietetics BS	0	24	35	51	51	58	58
Health Science: General BS	8	7	11	10	11	7	10
Health Science: Respiratory Care BS	7	5	21	27	21	25	22
Total Undergraduate	46	49	85	103	113	110	114
Graduate							
Health: School Health MED	2	7	15	10	3	13	10
Public Health MPH: Community	21	16	21	44	26	29	29
Public Health MPH: Integrative							8
Public Health MPH: Administrative							4
Public Health MPH: Environment							6
Health: Environment Health MS	1	0	0	0	0	0	0
Health Services MSA	2	1	0	0	0	0	0
Health: Public Health MS	0	0	0	1	0	0	0
Total Graduate	26	24	36	55	29	42	57
Department Totals	72	73	121	158	142	152	171



## Undergraduate and Graduate Degrees Conferred: Academic Years 2003-2004 through 2009-2010

Academic Plan	Degree Year						
	2003-04	2004-05	2005-06	2006-07	2007-08	2008-09	2009-10
<b><i>Kinesiology</i></b>							
Undergraduate							
Health & Physical Education BS	51	68	73	86	82	96	90
Pre-Physical Therapy BS	0	0	0	0	0	0	3
Exercise Science Specialist BS	32	21	31	40	21	43	47
<b>Total Undergraduate</b>	<b>83</b>	<b>89</b>	<b>104</b>	<b>126</b>	<b>103</b>	<b>139</b>	<b>140</b>
Graduate							
Hlth & Phys Ed: Exercise Phys MS	6	5	3	3	5	9	8
Sport & Athletic Admin MSA	10	13	17	14	8	14	14
MS in Physical Education	2	1	1	1	0	2	0
<b>Total Graduate</b>	<b>18</b>	<b>19</b>	<b>21</b>	<b>18</b>	<b>13</b>	<b>25</b>	<b>22</b>
<b>Department Totals</b>	<b>101</b>	<b>108</b>	<b>125</b>	<b>144</b>	<b>116</b>	<b>164</b>	<b>162</b>
<b><i>Nursing</i></b>							
Undergraduate							
Nursing BSN	68	83	82	84	65	62	61
RN to BSN	0	0	0	5	25	31	40
<b>Total Undergraduate</b>	<b>68</b>	<b>83</b>	<b>82</b>	<b>89</b>	<b>90</b>	<b>93</b>	<b>101</b>
Graduate							
Nursing - Education MSN	2	1	2	4	10	4	2
Nursing MSN	10	6	10	8	9	8	5
<b>Total Graduate</b>	<b>12</b>	<b>7</b>	<b>12</b>	<b>12</b>	<b>19</b>	<b>12</b>	<b>7</b>
<b>Department Totals</b>	<b>80</b>	<b>90</b>	<b>94</b>	<b>101</b>	<b>109</b>	<b>105</b>	<b>108</b>
<b><i>Sports Medicine</i></b>							
Undergraduate							
Athletic Training BS	9	14	29	18	17	26	30
<b>Total Undergraduate</b>	<b>9</b>	<b>14</b>	<b>29</b>	<b>18</b>	<b>17</b>	<b>26</b>	<b>30</b>
<b>Department Totals</b>	<b>9</b>	<b>14</b>	<b>29</b>	<b>18</b>	<b>17</b>	<b>26</b>	<b>30</b>

## Undergraduate and Graduate Degrees Conferred: Academic Years 2003-2004 through 2009-2010

Academic Plan	Degree Year						
	2003-04	2004-05	2005-06	2006-07	2007-08	2008-09	2009-10
<b>Communicative Disorders</b>							
Undergraduate							
Communicative Disorders BA	12	12	19	30	30	38	39
<b>Total Undergraduate</b>	<b>12</b>	<b>12</b>	<b>19</b>	<b>30</b>	<b>30</b>	<b>38</b>	<b>39</b>
Graduate							
Communicative Disorders MA	31	19	25	25	31	27	25
<b>Total Graduate</b>	<b>31</b>	<b>19</b>	<b>25</b>	<b>25</b>	<b>31</b>	<b>27</b>	<b>25</b>
<b>Department Totals</b>	<b>43</b>	<b>31</b>	<b>44</b>	<b>55</b>	<b>61</b>	<b>65</b>	<b>64</b>
<i>College of Health Sciences Undergraduate Totals</i>	218	247	319	366	353	406	424
<i>College of Health Sciences Graduate Totals</i>	87	69	94	110	92	106	111
<i>College of Health Sciences Totals</i>	305	316	413	476	445	512	535

### **College of Visual and Performing Arts**

#### **Applied Music**

##### Undergraduate

Music: Performance Instrument							3
Music: Performance Jazz BM							1
Music: Performance Voice BM							4
Music: Performance Keyboard BM	10	8	9	7	12	11	2
<b>Total Undergraduate</b>	<b>10</b>	<b>8</b>	<b>9</b>	<b>7</b>	<b>12</b>	<b>11</b>	<b>10</b>

##### Graduate

Music: Piano Pedagogy MM	3	1	1	3	2	4	1
Music Performance MM	1	3	5	6	4	8	6
<b>Total Graduate</b>	<b>4</b>	<b>4</b>	<b>6</b>	<b>9</b>	<b>6</b>	<b>12</b>	<b>7</b>
<b>Department Totals</b>	<b>14</b>	<b>12</b>	<b>15</b>	<b>16</b>	<b>18</b>	<b>23</b>	<b>17</b>

#### **Art**

##### Undergraduate

Studio Arts BA	See College of Arts & Sciences	3	3	6	1	1	4
Studio Arts BFA		48	63	62	46	70	38
<b>Total Undergraduate</b>		<b>51</b>	<b>66</b>	<b>68</b>	<b>47</b>	<b>71</b>	<b>42</b>
<b>Department Totals</b>		<b>51</b>	<b>66</b>	<b>68</b>	<b>47</b>	<b>71</b>	<b>42</b>

## Undergraduate and Graduate Degrees Conferred: Academic Years 2003-2004 through 2009-2010

Academic Plan	Degree Year						
	2003-04	2004-05	2005-06	2006-07	2007-08	2008-09	2009-10
<b><i>Instrumental Music</i></b>							
Undergraduate							
Music: Instrument Perform BM	2	0	0	0	0	0	0
Total Undergraduate	2	0	0	0	0	0	0
Department Totals	2	0	0	0	0	0	0
<b><i>Music History</i></b>							
Graduate							
Music History MA	1	0	2	1	1	0	1
Total Graduate	1	0	2	1	1	0	1
Department Totals	1	0	2	1	1	0	1
<b><i>Music Theory and Composition</i></b>							
Undergraduate							
Music: Elective Studies BM	9	17	16	17	10	7	9
Music: Composition BM	1	4	1	0	0	0	0
Music: Theory BM	2	1	0	0	0	0	0
Music: Theory and Composition BM	2	0	2	1	2	7	3
Total Undergraduate	14	22	19	18	12	14	12
Graduate							
Music: Composition MM	0	0	0	0	1	0	1
Music: Music Theory MM	0	0	0	1	2	0	0
Music: Theory & Composition MM	0	0	0	0	0	0	1
Total Graduate	0	0	0	1	3	0	2
Department Totals	14	22	19	19	15	14	14

## Undergraduate and Graduate Degrees Conferred: Academic Years 2003-2004 through 2009-2010

Academic Plan	Degree Year						
	2003-04	2004-05	2005-06	2006-07	2007-08	2008-09	2009-10
<b>Music Education</b>							
Undergraduate							
Music Education: Instrument BM	17	34	24	20	38	38	30
Music Education: Voice BM	9	14	14	13	8	15	24
Music Education: Keyboard BM	5	4	3	8	3	6	7
<b>Total Undergraduate</b>	<b>31</b>	<b>52</b>	<b>41</b>	<b>41</b>	<b>49</b>	<b>59</b>	<b>61</b>
Graduate							
Music Education MM	25	4	6	15	10	18	15
Music Education-Technology	0	0	0	1	1	2	3
<b>Total Graduate</b>	<b>25</b>	<b>4</b>	<b>6</b>	<b>16</b>	<b>11</b>	<b>20</b>	<b>18</b>
<b>Department Totals</b>	<b>56</b>	<b>56</b>	<b>47</b>	<b>57</b>	<b>60</b>	<b>79</b>	<b>79</b>
<b>Theatre Arts</b>							
Undergraduate							
Theatre Arts: Performance BA	See College of Arts & Sciences	2	7	1	5	6	2
Theatre Arts: Music Theatre BA		4	2	2	7	7	4
Theatre Arts: Tech Production BA		6	4	3	2	3	5
Theatre Arts: General BA		2	5	6	1	4	6
<b>Total Undergraduate</b>		<b>14</b>	<b>18</b>	<b>12</b>	<b>15</b>	<b>20</b>	<b>17</b>
<b>Department Totals</b>	<b>14</b>	<b>18</b>	<b>12</b>	<b>15</b>	<b>20</b>	<b>17</b>	
<i>College of Visual and Performing Arts Undergraduate Totals</i>	57	147	153	146	135	175	145
<i>College of Visual and Performing Arts Graduate Totals</i>	30	8	14	27	21	32	28
<i>College of Visual and Performing Arts Totals</i>	87	155	167	173	156	207	170
<b>University Undergraduate Totals</b>	1,901	2,020	2,166	2,160	2,114	2,552	2,422
<b>University Graduate Totals</b>	521	505	523	579	575	617	631
<b>University Totals</b>	2,422	2,525	2,689	2,739	2,689	3,169	3,053

## RESOURCES, SERVICES & FACILITIES



## Educational and General Budget Expenditure by Category FY 2006/07 - FY 2008/09 (based on PASSHE FINRPT)

	2006-07		2007-08		2008-09		2009-10	
	FY Amount	%	FY Amount	%	FY Amount	%	FY Amount	%
Instruction	68,805,587	39.50	71,463,412	38.20	74,470,409	38.53	78,694,933	38.89
Organized Research	800,435	0.46	891,320	0.48	1,729,899	0.90	1,795,966	0.89
Public Service	1,949,255	1.12	2,438,265	1.30	2,674,477	1.38	2,596,737	1.28
Academic Support	18,263,434	10.48	19,766,253	10.56	22,590,271	11.69	22,854,567	11.30
Student Services	10,165,427	5.84	11,766,667	6.29	13,165,249	6.81	13,378,716	6.61
Institutional Support	21,895,653	12.57	25,389,145	13.57	21,534,248	11.14	22,374,065	11.06
Physical Plant	13,162,801	7.56	14,636,908	7.82	16,049,127	8.30	16,352,937	8.08
Grant & Scholarships	6,389,103	3.67	6,481,084	3.46	6,668,451	3.45	8,757,504	4.33
Auxiliary Enterprises	22,004,405	12.63	21,490,813	11.49	20,821,853	10.77	22,209,497	10.98
Depreciation	10,764,136	6.18	12,775,613	6.83	13,550,243	7.01	13,312,713	6.58
<b>Total</b>	<b>174,200,236</b>	<b>100.00</b>	<b>187,099,480</b>	<b>100.00</b>	<b>193,254,227</b>	<b>100.00</b>	<b>202,327,633</b>	<b>100.00</b>

## Revenues - Large Categories FY 2006/07 – FY 2008/09 (based on PASSHE FINRPT)

	FY 2005-06	FY 2006-07	FY 2007-08	FY 2008-09	FY 2009-10
Tuition & Fees	84,154,390	85,721,203	91,824,645	96,264,155	96,720,899
State Appropriations	51,974,028	53,717,738	55,116,455	54,126,757	50,631,659
Government Contracts & Grants					
Federal	190,318	315,539	195,011	217,170	300,016
State	0	0	4,864	0	0
Local	0	0	0	2,880	52,270
System	9,992	5,998	981,517	88,117	745,690
Other Sources	3,450,401	5,315,454	4,093,762	3,829,349	3,200,195
Private Gifts, Grants & Contracts	450	0	0	19,868	572,575
Endowment Income	0	0	0	0	0
Income From Other Investments	1,936,620	2,634,876	3,107,856	2,502,533	1,887,372
<b>Total e&amp;G Revenue</b>	<b>141,716,199</b>	<b>147,710,808</b>	<b>155,324,110</b>	<b>157,050,829</b>	<b>172,967,007</b>

## Major Educational and General Revenue by Source FY 2004/05 to FY 2010/11

	FY 2005/06 <sup>1</sup>	FY 2006/07 <sup>2</sup>	FY 2007/08 <sup>3</sup>	FY 2008/09 <sup>4</sup>	FY 2009/10 <sup>5</sup>	FY 2010/11 <sup>5</sup>	FY 2011/12 <sup>5</sup>
Tuition & Fees	86,039,710	87,494,006	93,842,057	98,712,358	110,471,333	117,911,349	120,681,543
State Appropriations	50,706,242	52,538,957	53,773,619	52,929,089	50,631,659	51,392,413	51,392,413
Other	5,587,781	8,271,867	7,646,556	6,659,917	14,165,695	11,006,004	6,542,865
Carry Forward Fund Balance	0	0	0	0	8,623	0	0
<b>TOTAL</b>	<b>142,333,733</b>	<b>148,304,830</b>	<b>155,262,232</b>	<b>158,301,364</b>	<b>163,285,901</b>	<b>176,096,549</b>	<b>178,616,821</b>

\* Projected

<sup>1</sup> BUDREPORT-08 (rev 061024)

<sup>2</sup> BUDREPORT-09 (fr PASSHE 071011)

<sup>3</sup> BUDREPORT-10 (rev 081031)

<sup>4</sup> BUDREPORT-11 (rev 091013)

<sup>5</sup> BUDREPORT-12 (rev10923)

## Tuition and Fees by Semester

	2005	2006	2007	2008	2009	2010
<b>Undergraduate Tuition</b>						
Full-Time In-State	\$2,453	\$2,519	\$2,588.50	\$2,679	\$2,777	\$2,902
Full-Time Out-of-State	\$6,133	\$6,299	\$6,472	\$6,698	\$6,943	\$7,255
Per Credit In-State	\$204	\$210	\$216	\$230	\$231	\$242
Per Credit Out-of-State	\$511	\$525	\$539	\$558	\$579	\$605
<b>Undergraduate Fees</b>						
Full-Time In-State	\$588	\$565	\$583	\$599	\$725.70	\$937.85*
Full-Time Out-of-State						\$996.85*
Per Credit In-State	\$47	\$48	\$49	\$50	\$60.18	\$129.92**
Per Credit Out-of-State						\$154.92**
<b>Graduate Tuition</b>						
Full-Time In-State	\$2,944	\$3,024	\$3,107	\$3,215	\$3,333	\$3,483
Full-Time Out-of-State	\$4,711	\$4,839	\$4,972	\$5,144	\$5,333	\$5,573
Per Credit In-State	\$327	\$339	\$345	\$357	\$370	\$387
Per Credit Out-of-State	523	\$538	\$552	\$572	\$593	\$619
<b>Graduate Fees</b>						
Full-Time In-State	\$477	\$484	\$500	\$500	\$664.35	\$807.20
Full-Time Out-of-State						\$866.20
Per Credit In-State	\$54	\$55	\$57	\$50	\$62.56	214.02
Per Credit Out-of-State						\$158.24
<b>Residence Halls</b>	\$2,070	\$2,110				
<b>Meal Plan***</b>	\$957	\$983	\$1,019	\$1,114	\$1,170	1,189

\* Includes an additional Student Recreation Center Fee for entering Freshmen

\*\* Part-Time entering freshmen must add an additional Student Recreation Center fee of \$36 to the overall per-credit total

\*\*\*14 Meals per week



**Library**  
**FY 2007-2008 through 2009-2010**

	2007-2008	2008-2009	2009-2010	One Year Difference
<b>Library Holdings</b>				
Volumes	783,748	779,524	759,510	-20,014
Microforms	933,192	934,181	926,368	-7,813
E-Books	526,128	557,516	588,313	30,797
Audio/Video units*	74,002	74,010	140,044**	66,034
<b>Circulation (General &amp; Reserve)</b>	101,799	109,138	100,669	-8,469
<b>Total FTE Staff (includes student assistants)</b>	<b>54.79</b>	<b>57.46</b>	<b>55.67</b>	<b>-1.79</b>

\*Includes tapes, CDs, and DVDs

\*\*Includes 79,820 streaming audio and video albums/titles

## Fact book Evaluation

1. The Fact book was  
 Very helpful     Neither helpful/not helpful     Not Helpful
2. The sections in the Fact book that were *most helpful* (choose up to three):  
 Introduction  
 Admissions  
 Student enrollment  
 Retention
3. The sections in the Fact book that were *least helpful* (choose 3)  
 Introduction  
 Admissions  
 Student enrollment  
 Retention  
 Academic degree programs & accredited programs  
 Graduation / degree information  
 Faculty and staff information  
 Resources, services and facilities
4. For each section, why was the section **not** helpful (state section first)?  
Section: \_\_\_\_\_  
\_\_\_\_\_  
Section: \_\_\_\_\_  
\_\_\_\_\_  
Section: \_\_\_\_\_  
\_\_\_\_\_
5. What other sections should be included in the Fact book?  
Section: \_\_\_\_\_  
Section: \_\_\_\_\_
6. What other information should be included in the Fact book?  
Section: \_\_\_\_\_  
Section: \_\_\_\_\_
7. The primary use of the Fact book in my department is (check all that apply):  
 Determination of annual activities                       Enrollment planning  
 Evaluation of academic programs                       Budget planning  
 Comparison with previous academic years                       Other, please specify: \_\_\_\_\_  
 Comparison with other academic programs
8. Other comments for the Fact book:  
\_\_\_\_\_  
\_\_\_\_\_