

**OFFICE OF INSTITUTIONAL
RESEARCH**


WWW.WCUPA.EDU/OIR

WCU
WEST CHESTER
UNIVERSITY

WHAT WE DO

West Chester University's Office of Institutional Research provides institutional research and reporting services supporting University decision, planning, and accountability processes.

Primary functions:

- Data collection
 - Data extraction
 - Analysis
 - Reporting
- 

WHAT WE DO

Census (“Freeze”) Data

*Official, Historic, Trend
Comparable, Reportable
PASSHE, IPEDS, MSCHE
Accreditation and Other Annual Reports
How many? Has that changed over time?
How does it compare?*

Live Data

*Unofficial, Today
Not Comparable, Not for Reporting
Process Oriented
Contact lists, Major/Minor reports
How many today?*

OIR

Research Design

*What is the question?
What are you trying to measure?
Is that data available?
If not, what is the best way to get it?
Surveys, External Data Sources,
New PS fields/tables, Other Data Collection*

Data Analysis

*I’ve got the data, now what do I do with it?
Data Management
Data Structure
Statistical Analysis
Results
And what does it mean?*

“FREEZE” DATA

Census (“Freeze”) Data

*Official, Historic, Trend
Comparable, Reportable
PASSHE, IPEDS, MSCHE
Accreditation and Other Annual Reports
How many? Has that changed over time?
How does it compare?*

www.wcupa.edu/OIR

What is WCU’s official fall enrollment headcount? How much has WCU grown in 5 years? What proportion of the total enrollment is graduate enrollment? Is WCU’s percent of NRA students comparable to national peers?

What is it?

Snapshot census data.

- Fall freeze, 15th day of classes
- End of term/Graduation

Official counts

- Students (Majors/Minors)
- Courses/Credit Hours
- Program/Degree Completions
- Faculty/Staff

Why do I want to use it?

Official

- PASSHE
- IPEDS
- MSCHE

Comparable

Replicable

Where do I get it?

OIR website

- WCU Fact Book
- Common Data Set
- College Portrait
- Published Data
- Request Form

WWW.WCUPA.EDU/OIR

WEST CHESTER
UNIVERSITY

[Webmail](#) [myWCU](#) [D2L](#)

Departments
Apply Now ▾
Academics ▾

Prospective Students
Current Students
Parents
Alumni & Donors
Visitors
Arts
Athletics
Faculty & Staff

OFFICE OF INSTITUTIONAL RESEARCH

West Chester University

887 S. Matlack Street
West Chester, PA 19383
610-436-2835
Fax: 610-436-2635
Email: [Institutional Research](mailto:Institutional_Research@wcupa.edu)

Institutional Research Home

Enrollment

Credit Hour Production

First-Year Student Survey

National Survey of Student Engagement

Retention & Graduation Rates

Degrees Conferred

Faculty & Staff

WCU Fact book, PASSHE Fact book, and Other PASSHE Data

Common Data Set

Office of Institutional Research Home

West Chester University's Office of Institutional Research provides institutional research and reporting services supporting University decision, planning, and accountability processes.



©2012 West Chester University

These pages are maintained by the Office of Institutional Research, Opportunity Institution

Can't find what you're looking for? [Click Here to Contact Us](#)

[Click Here](#) to access the Fall 2012 Enrollment Report

WEST CHESTER
UNIVERSITY

Departments
Apply Now ▾
Academics ▾

Prospective Students
Current Students
Parents
Alumni & Donors
Visitors
Arts
Athletics
Faculty & Staff

OFFICE OF INSTITUTIONAL RESEARCH

West Chester University

887 S. Matlack Street
West Chester, PA 19383
610-436-2835
Fax: 610-436-2635
Email: [Institutional Research](mailto:Institutional_Research@wcupa.edu)

Institutional Research Home

Enrollment

Credit Hour Production

First-Year Student Survey

National Survey of Student Engagement

Office of Institutional Research Home

West Chester University's Office of Institutional Research provides institutional research and reporting services supporting University decision, planning, and accountability processes.



©2012 West Chester University

These pages are maintained by the Office of Institutional Research, Opportunity Institution

Can't find what you're looking for? [Click Here to Contact Us](#)

[Click Here](#) to access the Fall 2012 Enrollment Report



WWW.WCUPA.EDU/OIR

WEST CHESTER UNIVERSITY

Webb
Departm

Prospective Students | Current Students | Parents | Alumni & Donors | Visitors | Arts | Athletics | Faculty & Staff

Frozen data

- WCU Fact Book
- OIR Published Data
 - ✓ Student Headcount
 - ✓ Student Major Count
 - ✓ Credit Hour Production
 - ✓ Degree Counts
 - ✓ Faculty/Staff Counts
- Common Data Set

WCU Fact book, PASSHE Fact book, and Other PASSHE Data

Common Data Set

Information Request Form

Links to Active Surveys

Links to Survey Results

- NSSE
- FSSE
- BCSSE
- VSA: Future Plans
- Alumni Survey

Links to External Data

Links to External Publications

- College Portrait

Click Here to access the Fall 2013 Academic Advising Evaluation

WWW.WCUPA.EDU/OIR

OFFICE OF INSTITUTIONAL RESEARCH
West Chester University

887 S. 1
West Che
Fax:
Email: Institu

Institutional Research Home

Enrollment

Credit Hour Production

First-Year Student Survey

Degrees Conferred

Historic Degree Count Comparisons

[By Academic Plan \(PDF Format\)](#)
(Updated Sept 2013)

[by College and Division \(PDF Format\)](#)
(Updated Sept 2013)

[By Degree and Division \(PDF Format\)](#)
(Updated Sept 2013)

Degrees Conferred by Program, Gender, and Race/Ethnicity

(Updated Sept 2013)

			2012-2013
2011-12	2010-11	2009-2010	2008-2009
2007-2008	2006-2007	2005-2006	2004-2005
2003-2004	2002-2003	2001-2002	2000-2001

“Freeze” Data

- “Historic”
 - Multi-year
 - Trend
 - Official IPEDS
- Single year
 - Break-outs
 - “By _____” (gender, race/ethnicity, residency, full-time status, academic plan, college)

INFORMATION REQUEST FORM

If you can't find the data you need, submit an information request

Your request will be directed to a member of OIR who will respond within 1-2 business days with any questions and an expected completion date.

OIR INFORMATION REQUEST FORM	
University Department Information	
Requester:	<input type="text"/>
ORG/DEPT:	<input type="text"/>
Phone:	<input type="text"/> - <input type="text"/> - <input type="text"/>
Date of Request:	1/13/2014
Email Address:	<input type="text"/>
Request Information	
Request Title:	<input type="text"/>
Preferred Completion Date:	<input type="text"/> (mm/dd/yyyy)
Type of Data Requested (student, course, faculty, etc.):	<input type="text"/>
Single Point in Time or Longitudinal:	
<input type="checkbox"/> Current Semester Live Data	
<input type="checkbox"/> Current Semester Freeze/Census Data/PEDS	
<input type="checkbox"/> Multiple Terms: FY or AY	
Please describe: <input type="text"/>	
Description of Project Request	
Please limit to one paragraph: <input type="text"/>	
What is the purpose for the requested data?	
<input type="checkbox"/> Federal Requirement	<input type="checkbox"/> Program Accreditation
<input type="checkbox"/> State Requirement	<input type="checkbox"/> External Survey
<input type="checkbox"/> University Requirement	<input type="checkbox"/> Unit Planning or Assessment
<input type="checkbox"/> Other (please describe and limit to one paragraph): <input type="text"/>	
Will this be a recurring request? <input type="radio"/> Yes <input type="radio"/> No	
Frequency: <input type="radio"/> Monthly <input type="radio"/> Quarterly <input type="radio"/> Yearly <input type="radio"/> Other, please explain: <input type="text"/>	
Do you have PeopleSoft query access? <input type="radio"/> Yes <input type="radio"/> No	
<input type="button" value="Submit"/> <input type="button" value="Clear"/>	

- Credit Hour Production
- First-Year Student Survey
- National Survey of Student Engagement
- Retention & Graduation Rates
- Degrees Conferred
- Faculty & Staff
- WCU Fact book, PASSHE Fact book, and Other PASSHE Data
- Common Data Set
- Alumni Surveys
- Our Staff
- Information Request**



©2012 West Chester University

These pages are maintained by the Office of Institutional Research at West Chester Opportunity Institution

Can't find what you're looking for?
[Click Here](#) to make a request.

[Click Here](#) to access the Fall 2013 Academic Advising Evaluation

“LIVE” DATA

Live Data

Unofficial, Today

Not Comparable, Not for Reporting

Process Oriented

Contact lists, Major/Minor reports

How many today?



Any data you see in PeopleSoft is available. Work smarter, not harder. Can you get me a list of all Greek students with their major and CGPA?

What is it?

Live transactional data from PeopleSoft

Different number depending on when the data is pulled

Why do I want to use it?

Examine Processes

- Number of applications received
- Number of applications in review
- Number of accepts
- Number of deposits received

Obtain most current data

- Contact lists
- Student enrollment data
- Class enrollment data

NOT for reporting purposes

Where do I get it?

PeopleSoft Reports (MyWCU)

- WCU Current Majors Report
- WCU Advisor Report
- Ratio Report

OIR Request Form

RESEARCH DESIGN

Research Design

What is the question?

What are you trying to measure?

Is that data available?

If not, what is the best way to get it?

Surveys, External Data Sources,

New PS fields/tables, Other Data Collection



We think student involvement in Greek life has a positive impact on the student academics, retention, and graduation rate. Is that true?

OIR can assist you with research design

Objective

- What is it that you want to know?
- What is the research question(s)?
- What are you trying to measure?
- Are your assessment goals S.M.A.R.T?
 - ✓ Specific*
 - ✓ Measurable*
 - ✓ Achievable
 - ✓ Relevant
 - ✓ Time-based

Hypothesis

- What assumption do you want to test?
- What is the best way to test the assumption?

Methods

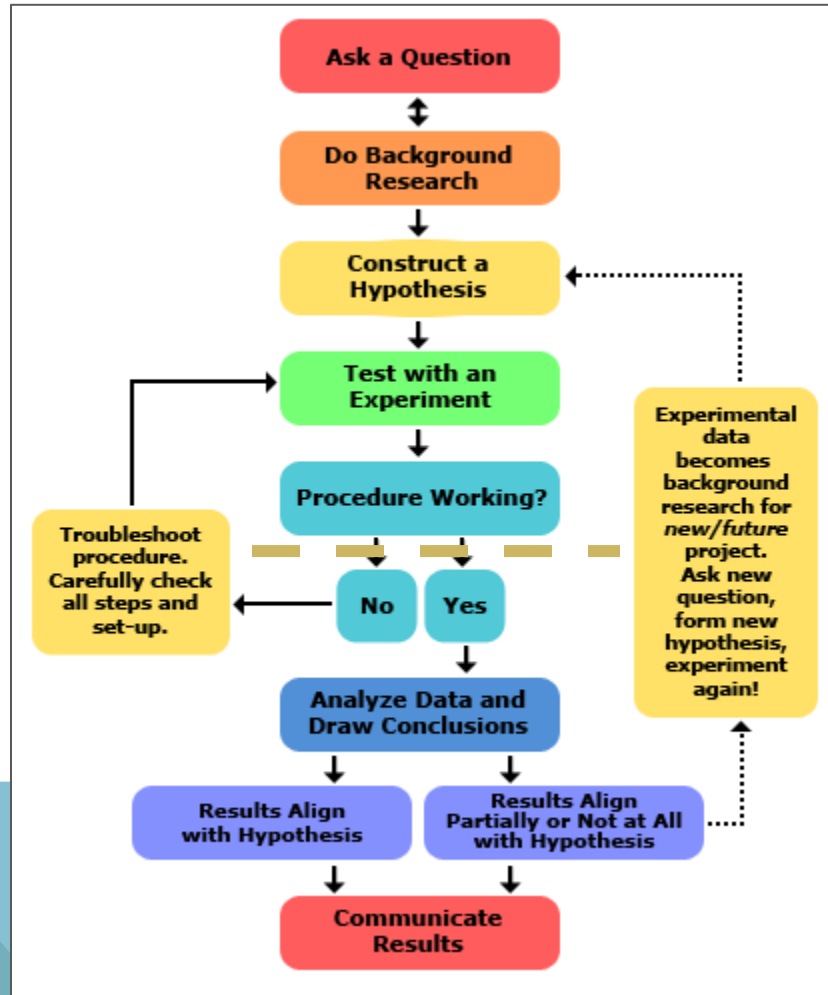
- What type of data do you need to answer the question or test your assumption?
- Is the data already available?
 - ✓ Internal data sources
 - ✓ External data sources
- If not, what is the best way to get it?
 - ✓ Data collection methods
 - ✓ Survey design

Data Analysis Plan

YES, VIRGINIA, THERE IS A SCIENTIFIC METHOD.

OIR can assist with
Research Design.

OIR can assist with
Data Analysis.



10 seconds or 12 months

DATA ANALYSIS

Data Analysis

I've got the data, now what do I do with it?

Data Management

Data Structure

Statistical Analysis

Results

And what does it mean?



Strictly speaking, hypothesis testing

What story does my data tell?

- Descriptives
- Exploration
- Data Mining

What questions can I answer with this data?

What are the limitations of this data?

What are the appropriate statistics to use?

What format should my data be in?

- Excel
- Access
- SPSS

How will I handle missing or incorrect data in my analysis?

What do these results mean?

How can I present this data in a clear, meaningful, and unbiased way?

What are the next steps?

- New questions
- New data needs

OTHER STUFF

Strategic Planning

Enrollment Projections and Enrollment Management

Student Success and Retention

System Accountability Plan/Performance Funding

PASSHE Annual Data Collection and Other Required Reporting (IPEDS, NCAA, PDE)

Assessment

Benchmarking

Accreditation

Grant Proposals and Annual Reporting

Faculty CBA Required Student Evaluations (SRIS, PMAA, Coaches, Counselors)

Survey Development

New Software Acquisition

Data Analysis and Visualization Software Assistance (PeopleSoft, Excel, Survey Monkey, Access, SPSS, iDashboards)

OIR NEWS

iDashboards

- Data visualization tool
- Snapshot and live data
- Accessible through myWCU

Qualtrics

- Survey/Data Collection software
- Trieva Dungee will be administering