



Mitchell Hall

Building Specific Fire Safety Information

Life Safety Systems



Mitchell Hall is equipped with:

- Fire Detection
- Evacuation Alarms
- Fire Sprinklers

All fire alarms are monitored by Public Safety



Life Safety Systems



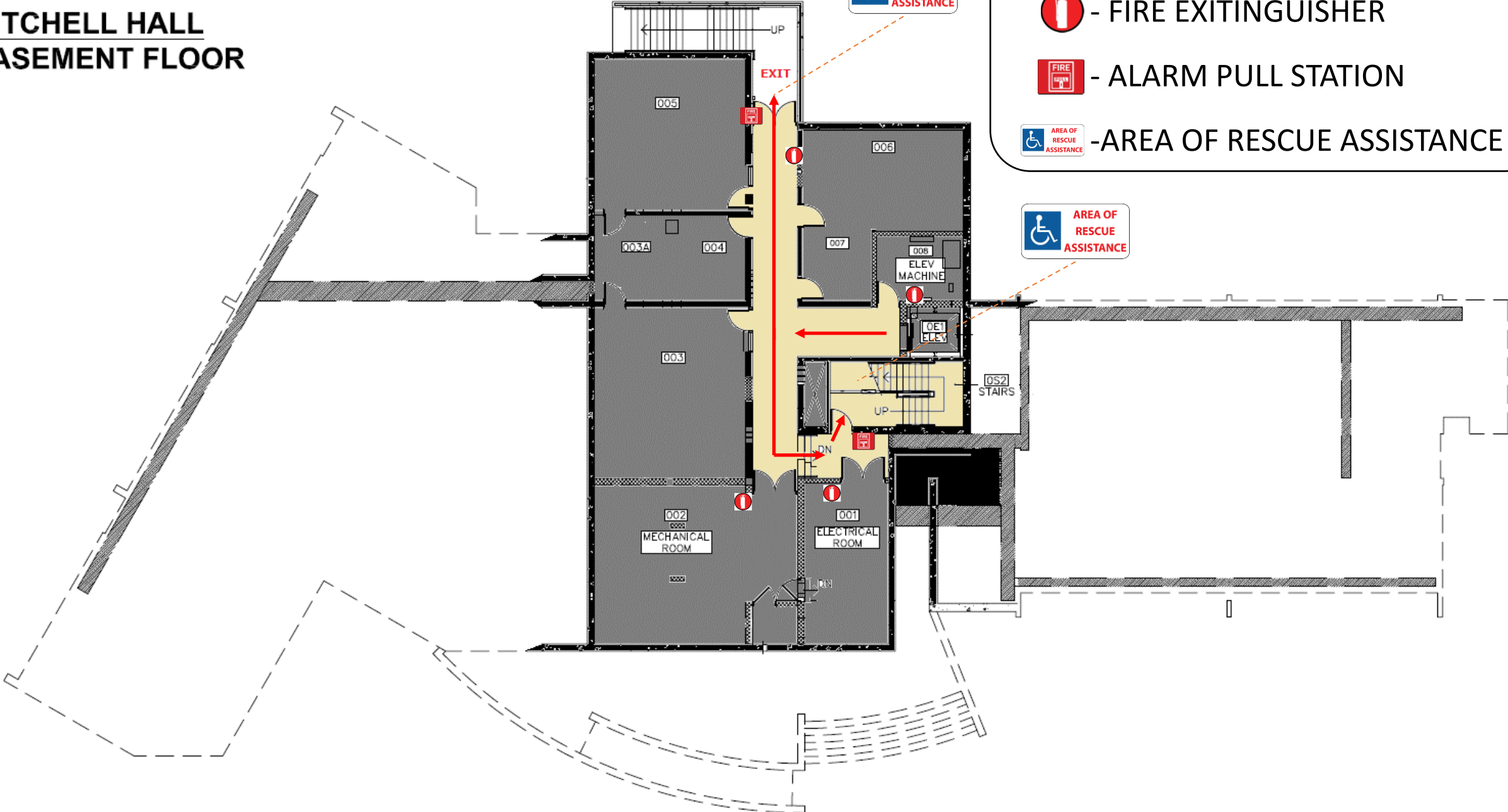
Mitchell Hall is equipped with:

- Emergency Call boxes/Buttons in Elevators that contact Public Safety Dispatcher
- AED in the First Floor Lobby

Fire Safety Maps

Maps of relevant Fire safety equipment, Evacuation routes, and Areas of Rescue Assistance

MITCHELL HALL BASEMENT FLOOR



LEGEND



- FIRE EXTINGUISHER



- ALARM PULL STATION






- AREA OF RESCUE ASSISTANCE

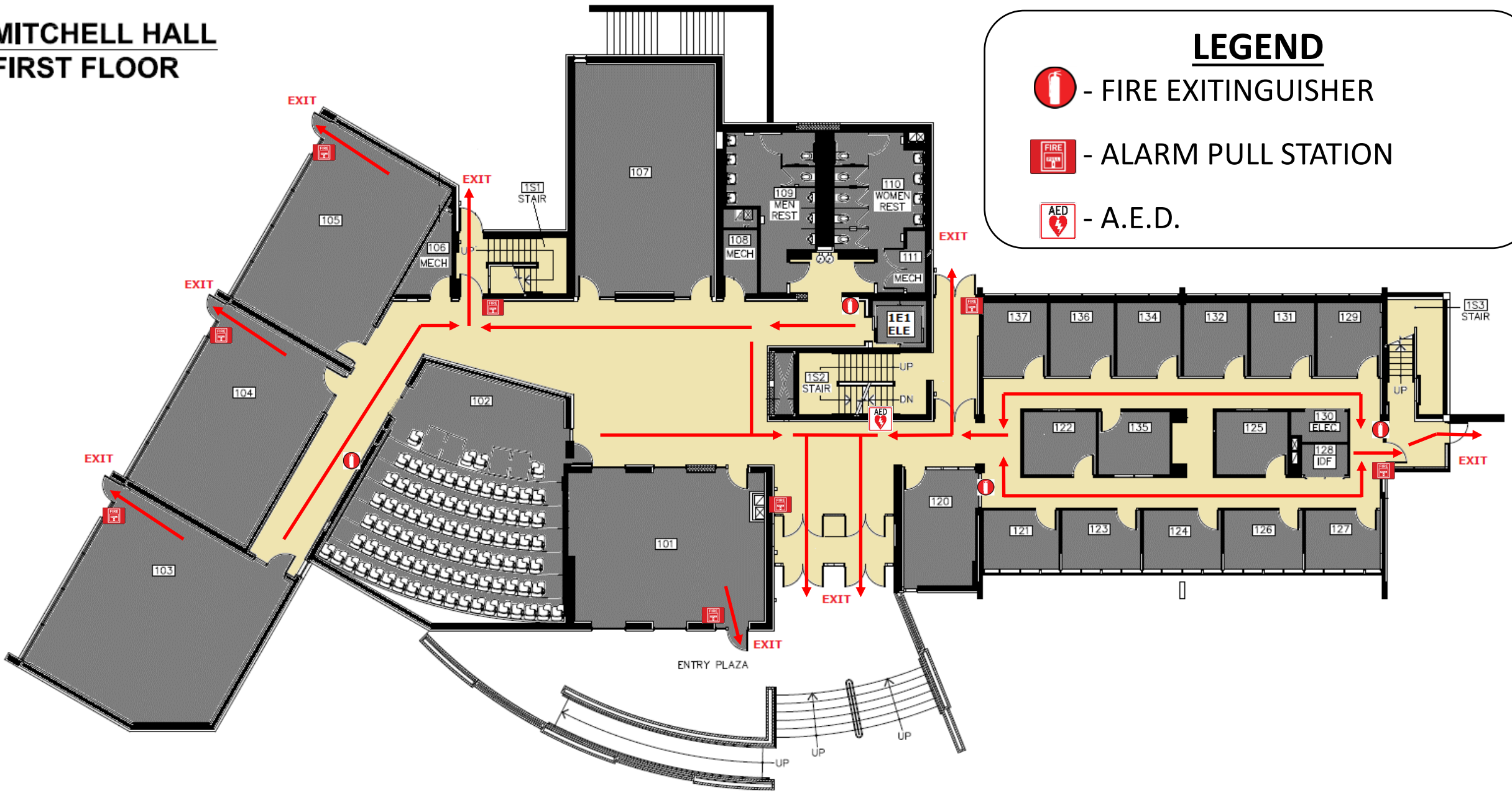


AREA OF RESCUE ASSISTANCE

MITCHELL HALL FIRST FLOOR




LEGEND

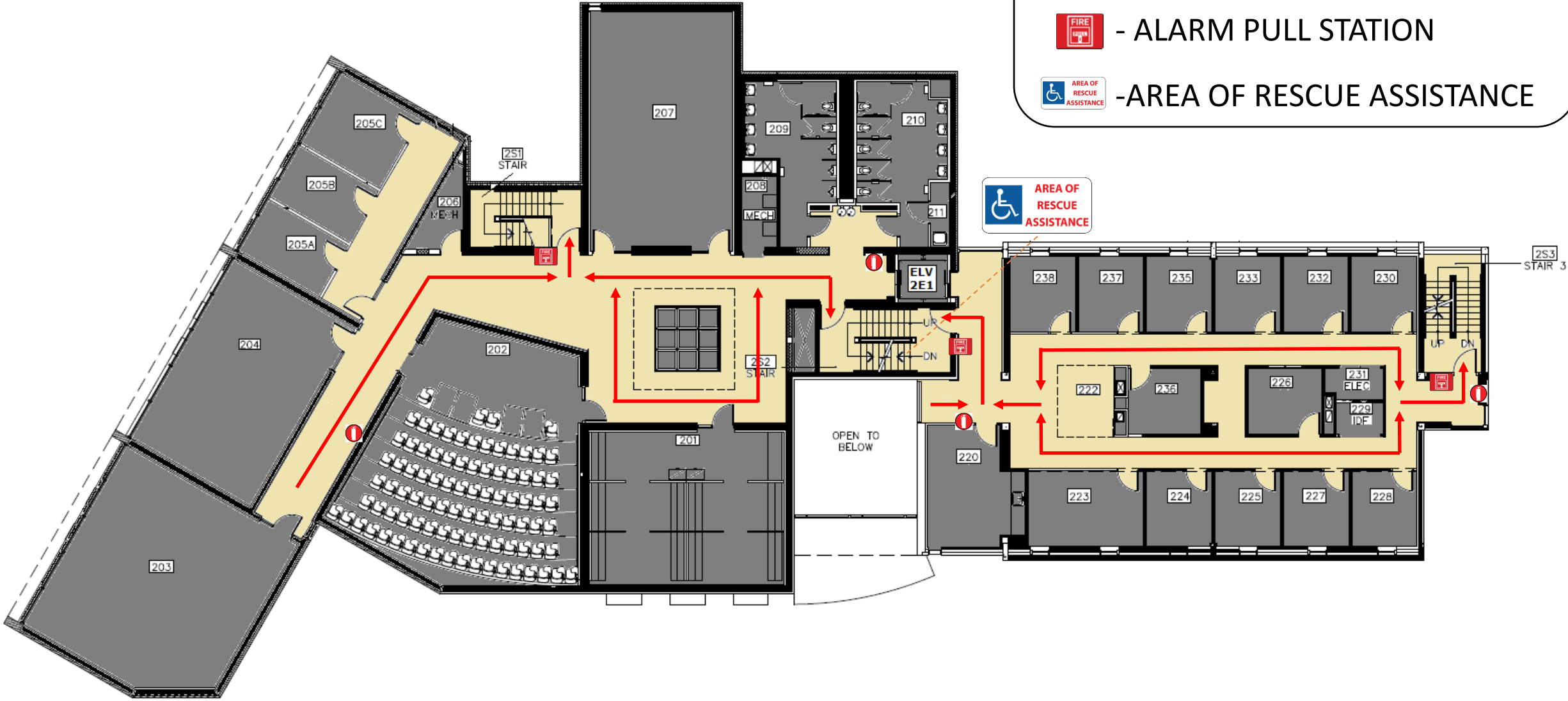
-  - FIRE EXTINGUISHER
-  - ALARM PULL STATION
-  - A.E.D.



MITCHELL HALL SECOND FLOOR




LEGEND

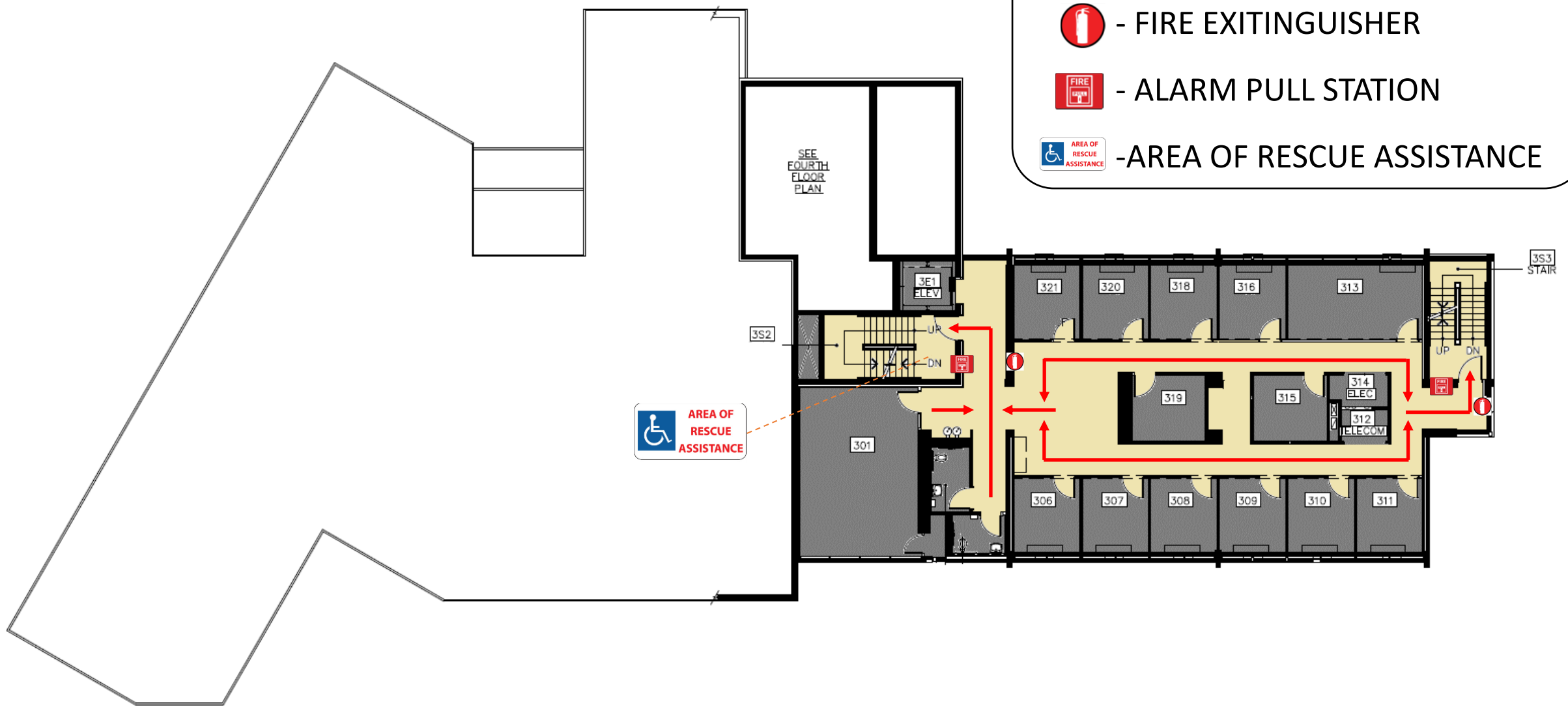
-  - FIRE EXTINGUISHER
-  - ALARM PULL STATION
-  - AREA OF RESCUE ASSISTANCE



MITCHELL HALL THIRD FLOOR

LEGEND

-  - FIRE EXTINGUISHER
-  - ALARM PULL STATION
-  - AREA OF RESCUE ASSISTANCE



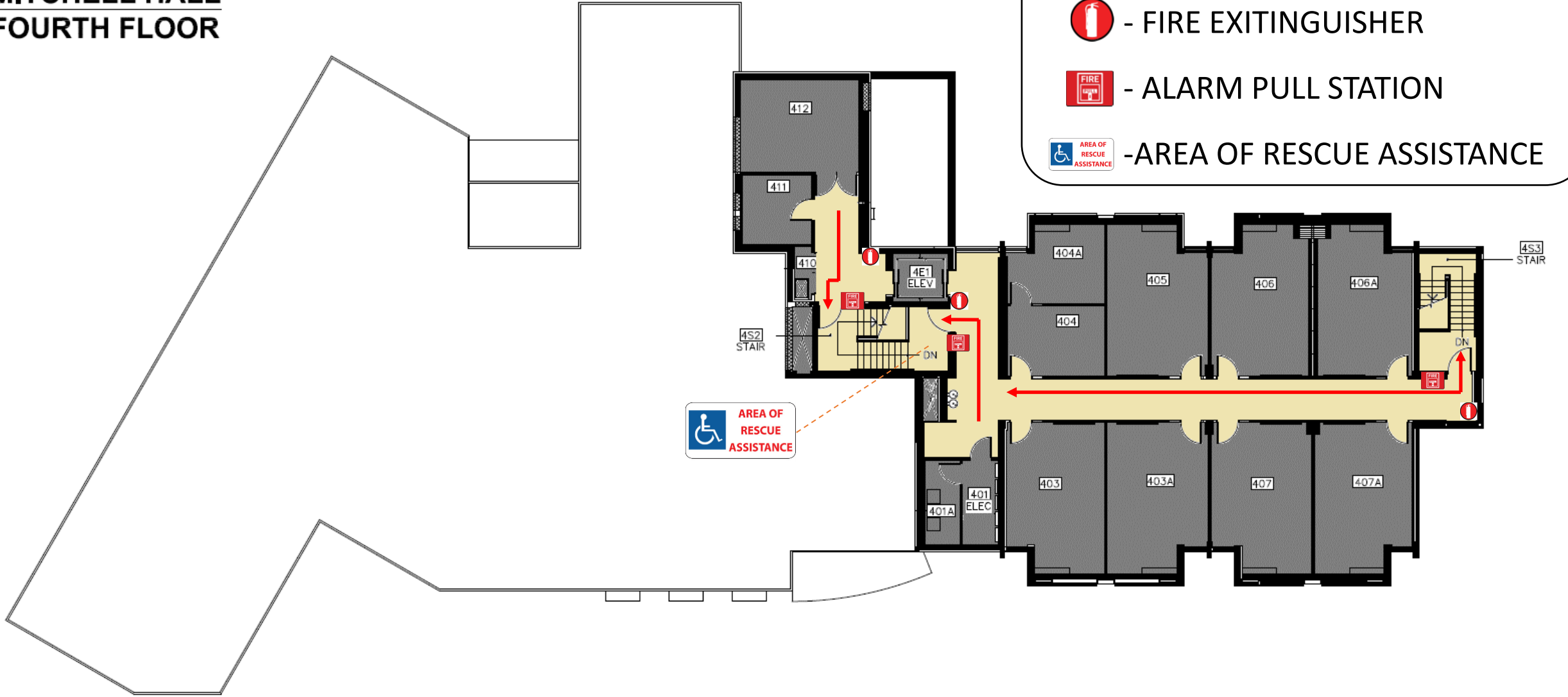
MITCHELL HALL FOURTH FLOOR

LEGEND

 - FIRE EXTINGUISHER

 - ALARM PULL STATION

 - AREA OF RESCUE ASSISTANCE





Designated Meeting Place

On the lawn next to 25 University and Mitchell

Do not gather in the parking lots

Managers should take attendance of their employees

Faculty with classes should take attendance of their students



S Church ST



Mitchell Hall

25 University

BPMC

1-12-244
3.5 AC.

1-12-245
0.11 AC.

1-12-246
0.09 AC.

Reynolds AL

Sharpless ST

1-9-10
0.14A

1-9-1086
0.12 AC.

1-9
0.5

Reporting a Fire

If you discover smoke or flame, immediately initiate the following actions:

- Activate the fire alarm system by pulling a manual pull station or verbally notify the building's occupants of the fire if the alarm system is not functioning.
- Evacuate from the building and report to the Designated Meeting Location and await further instruction from a Public Safety representative.
- Even if the fire alarm system has already been activated, (at safe distance from the fire) contact the Public Safety Department at 610-436-3311 to report the fire.





If the building fire alarm activates:

- **All occupants** are required to **evacuate immediately** by using the closest available exit point. Evacuations should be conducted in a calm and orderly manner.
- When evacuating the building, only take essential belongings. This includes items such as keys, WCU ID, wallets, purses, **coats**, medications, etc.
- When evacuating the building, remember to turn off lights and close doors to rooms as you leave.

Evacuation by Fire Alarm

Building Fire Alarm



- While evacuating remind others to leave the building and ask if they need assistance. If you are unable to assist or they are unwilling to evacuate; continue evacuating yourself and notify Public Safety of their location.
- Proceed to the Designated Meeting Location and stay there
- Upon receiving an “ALL CLEAR” from Public Safety, staff will assist occupants with re-entry into the building

Evacuation by Fire Alarm

Building Fire Alarm

Anyone who needs assistance evacuating

- Occupants that cannot evacuate the building on their own should proceed to the closest **Area of Rescue Assistance or the landing of an enclosed stairway**
- After arriving at the **Area of Rescue Assistance or the landing of an enclosed stairway**, contact Public Safety at **(610) 436-3311** to advise them of your location
- If getting to the Area of Rescue Assistance is not possible, stay in your room with the door closed. Contact Public Safety at **(610) 436-3311** and let the dispatcher know your location
- Before an emergency, Environmental Health & Safety can help you identify egress routes, Areas of Rescue Assistance, and develop a personal evacuation plan. **(610) 436-3333**

Additional Fire Safety Information

- Please visit [Fire Safety page on WCUPA.EDU](#)
- If you have questions or concerns; Contact **Environmental Health & Safety at 610-436-3333**



*Environmental
Health & Safety*

