

**Undergraduate
STUDENT HANDBOOK**

2011 - 2012

**DEPARTMENT
OF
NURSING**



West Chester University
West Chester, Pennsylvania 19383



STUDENT HANDBOOK *

PUBLISHED August 2011

DEPARTMENT OF NURSING

WEST CHESTER UNIVERSITY of PA
West Chester, Pennsylvania 19383

Telephone: 610-430-4181

FAX: 610-436-3083

**The Department of Nursing of West Chester University of PA, is approved by the
State Board of Nursing of the**

**Commonwealth of Pennsylvania, and accredited by the
Commission on Collegiate Nursing Education**

One DuPont Circle, NW, Suite 530

Washington, DC 20036-1120

202-887-6791 FAX: 202-887-8476

www.aacn.nche.edu

*** The provisions of this handbook are not to be regarded as an irrevocable contract
between the student and the West Chester University Department of Nursing.
The Department of Nursing reserves the right to change any provisions or
requirements at any time.**

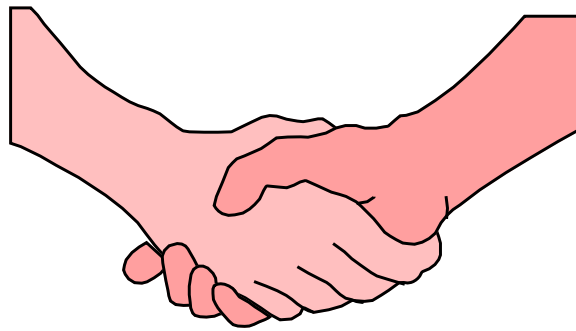
TABLE OF CONTENTS

	<i>Page</i>
I. Introduction	
A. Letter from Chairperson.....	4
B. Faculty and Staff.....	5
II. Nursing Program	
A. Purposes.....	7
B. Mission Statement.....	8
C. Conceptual Framework.....	10
D. Program and Level Objectives.....	13
E. Sequence of Courses & Advisement Sheet.....	16
F. Nursing Course Descriptions.....	19
G. Clinical Facilities.....	26
H. Clinical Agencies: (NSL 311-312, NSL 411-412).....	27
III. Overall Program Requirements	
A. Admission Criteria.....	33
B. Technical Standards Policy.....	33
C. Academic Progression.....	37
D. Academic Achievement and Promotion.....	38
E. Nursing Class Attendance Policy.....	39
F. Academic Support Policy.....	40
G. Student Records and Advisement	
1. Departmental.....	40
2. Academic Guidance and Counseling.....	41
3. Services to Accommodate Students with Disabilities.....	41
4. Financial Aid.....	42
5. Scholarships.....	42
H. Academic Dishonesty Policy.....	42
I. Graduation	
1. NCLEX.....	43
2. Temporary Practice Permits.....	44
3. Outcome Assessments.....	44

TABLE OF CONTENTS (Continued)

	<i>Page</i>
IV. Clinical Requirements	
A. Requirements for all Nursing Students Prior to Clinical Practicum's.....	46
1. All Course Prerequisites as stated in Academic Policies	46
2. CPR Certification.....	46
3. Liability Insurance	46
4. Criminal and PA Child Abuse History Clearance	46
5. Substance Abuse Policy.....	47
Drug Test Form.....	48
6. FBI Check.....	49
7. Health Requirements	49
8. Health Insurance	50
B. Additional Requirement(s) for all Nursing Students	
Entering First Clinical Program	50
1. Calculations Test Policy	50
C. Student Guidelines for Communicable Diseases	50
1. Introduction	50
2. Communicable Disease Policy	51
3. Pre-requisite Clinical "Consent to Release" Form.....	52
D. Standards of Safe Clinical Practice	53
1. Violation of Standards of Safe Clinical Practice Form.....	56
E. Clinical Attendance Policy.....	57
F. Attendance at Professional Conferences	57
G. Transportation to Clinical Agencies.....	57
H. Dress Code (Uniforms, etc.).....	57
I. Student Employment.....	59
V. Student Activities	
A. Class Officers.....	61
B. Student Officers	61
C. Student Affairs Committee	62
D. WCU Nursing View.....	62
E. SNAP	62
F. Mary Kline Lecture & Professional Day.....	63
G. Sigma Theta Tau.....	63
H. Pins	63
I. Awards	
1. Faculty Award	64
2. Academic Excellence Award.....	64
3. Elise Triano Award for Excellence in Pathophysiology	64
J. Scholarships	
1. Anne E. Sell Memorial Nursing Scholarship.....	64
Anne E. Sell Memorial Nursing Scholarship criteria	65

I. Introduction



August, 2011

Dear Student,

As chairperson of the Department of Nursing, I would like to welcome you to West Chester University of Pennsylvania. Congratulations on your acceptance into the nursing program. You are about to embark on a most interesting and exciting journey into the profession of nursing.

This student handbook will help to acquaint you with almost everything you need to know about the Department of Nursing. Not only does it contain activities and program requirements, but also contains important information that will help you to succeed and navigate efficiently through the nursing program.

The Department has a number of opportunities for you to become involved both socially and academically. The Student Nurses' Association of PA (SNAP), the Mary Kline Lecture Series, the Xi Delta Chapter of Sigma Theta Tau International Honor Society just to name a few.

I look forward to meeting each of you. The faculty and staff would like to welcome you and wish you much success in your journey!

Sincerely,

Charlotte Mackey

Charlotte Mackey, MSN, RN, Ed.D.
Chairperson & Associate Professor
Department of Nursing

FACULTY

All faculty, staff and Nursing Lab Coordinator of the Nursing Department are located in the Russell L. Sturzebecker Health Sciences Center, South Campus.

	<u>ROOM</u>	<u>TELEPHONE</u>
Donna Bohs, MSN, RN	224 B	430-4195
Katherine Conroy, MSN, RN RN/BSN Fast-track Program	222 I	436-3204
Mary Fran Cullen, MSN, APRN, BC	224 B	430-4195
Lisa Doherty, MSN, RN	222 J	738-0549
Robin Garrett, MSN, RN	222 M	738-0548
Janet Hickman, Ed.D, RN	222 F	436-2258
Charlotte Mackey, MSN, RN, Ed.D. Chairperson	222 D	436-3474
Edward Mackey, MSN, CRNA, PhD RN/BSN Fast-track Program	222N	738-0543
Cheryl Monturo, PhD, MBe, APRN, BC Advance 2 BSN Coordinator	222 C	436-2693
Christine Moriconi, Psy.D., ACNS-BC, RN, MA, LMFT	222 P	436-3473
Wendy Mortimer, MSN, CRNP	222K	436-2839
Megan Mraz, RN, MSN	222 B	430-4408
Cheryl Schlamb, MSN, CRNP RN/BSN Coordinator	222 L	738-0544
Susan Stabler Haas, MSN, RN, CS, LMFT	224B	436-3488
Ann Coghlan Stowe, Ph.D., RN Assistant Chairperson Graduate Coordinator	222 G	436-2331
Christine Thomas, RN, MSN, Ph.D. Level III Coordinator	222 H	738-0545
Brent Thompson, BSN, Ph.D.	222 O	436-2692
Michele Tucker, MS, RN Level IV Coordinator	222 E	738-0550
Linda Weinberg, RN, MSN	224 B	430-4195
Marcia Welsh, CNM, MSN, D.L.	222 A	436-2323
<u>STAFF</u>		
Darlene Barr, BSN, RN Nursing Lab Coordinator	224 C	436-3489
Linda Morrow Department Secretary	222	430-4181

II. Nursing Program



PURPOSES

The purposes of the West Chester University baccalaureate nursing program are:

1. To prepare baccalaureate registered nurses for clinical practice.
2. To develop the ability to function as a self-directed professional capable of assuming leadership in present and emerging health care roles.
3. To enhance personal responsibility for being a useful, contributing member of society.
4. To encourage the continuing process of personal development.
5. To provide the basis for graduate study and life long learning.

MISSION

The mission of the Department of Nursing at West Chester University is to provide high quality professional degree education in nursing. The baccalaureate program prepares graduates for entry to nursing practice and the master's program prepares graduates for advanced practice in community health nursing. The goal of the department is to prepare nurses for leadership and advocacy in the health promotion, disease prevention and health restoration of individuals, families and communities. Graduates of these nursing programs will be professionals capable of assuming leadership in present and emerging health care roles, citizens who contribute to society, and who are committed to life-long learning and personal development.

PHILOSOPHY

The Department of Nursing affirms the WCU Vision, Mission and Values Statements and the College of Health Sciences Mission Statement. It shares the University's commitment to teaching, research, and service to individuals, families and communities. The following statement reflects the Department of Nursing's philosophical beliefs.

The Department of Nursing recognizes that individuals, families and communities are entitled to access to health care. Health care is defined as services which promote quality of life throughout the life span. Nursing is the provision of a supportive, protective, and /or corrective mental, physical, societal and spiritual environment through the development of a helping trusting human caring relationship. Advanced practice nursing roles include expert clinician, educator, researcher, consultant, and leader. The nursing programs at West Chester University recognize and value the holistic qualities of individuals, families and communities. The programs prepare individuals to practice nursing with the framework of these values through a strong liberal arts and science curriculum.

The faculty of the Department of Nursing provides a caring and supportive environment while respecting the diversity of the student body and communities which it serves. The University community cultivates and supports faculty/student collaboration and mentoring. Students are treated as individuals with unique qualities and learning needs. Through role modeling, the faculty reflects the department's philosophy of caring in their own nursing practice and in their relationships with faculty, students, and the community.

Mission and Philosophy continued

The AACN *Essentials* documents (*The Essentials of Baccalaureate Education* and *The Essentials of Master's Education*) provide structure for the curriculum content of both programs. The faculty designed both programs to facilitate the students' abilities to creatively respond to a continuously changing health system. Innovative educational experiences are cooperatively planned to meet the needs of students and clients and to empower them both. The interpretation, development and implementation of ethical research are stressed throughout the educational process.

Ethical decision making, accountability, critical thinking, and effective communication skills are emphasized. This is achieved by the application of nursing theory to professional practice. Each program promotes lifelong learning and the pursuit of advanced professional degrees.

Revised	1991
	1996
	1998
Revised	2001
	2002
	2011

CONCEPTUAL FRAMEWORK

The nursing curriculum utilizes a holistic caring model for the study of person, environment, health, and nursing. The horizontal and vertical strands serve to organize content around multiple theories and concepts that have been drawn from physical, psychological, cultural, social, and nursing sciences.

Five horizontal strands can be identified in all the nursing courses. They include: the holistic person adapting throughout the life cycle; the nursing process; nursing theory; legal-ethical issues; and teaching-learning principles. A description of the way each is implemented follows.

The holistic person adapting throughout the life cycle. While moving through the life span, one adapts continuously to internal and external stimuli. The understanding of adaptational responses is basic to the students' knowledge and professional practice.

The nursing process. Students use the nursing process to assess, plan, intervene, and evaluate the responses of assigned clients. Course objectives describe the depth to which the students utilize the nursing process.

Nursing theory. Through academic and clinical assignments, students learn to apply nursing theory to professional practice, and analyze the quality of care provided with emphasis on relationship based care.

Legal-ethical issues. These issues are an inherent part of all professional nursing practice. Inclusion of the legal- ethical dimension of nursing in all courses encourages values clarification, fosters accountability, and enhances decision- making.

Teaching-learning principles. An understanding of teaching-learning principles is fundamental to the provision of health care. Students learn to apply skills of counseling, therapeutic communication, and health promotion in increasingly complex situations.

The vertical strands which provide structure to the curriculum are:

Health status -wellness to less well to crisis

Focus of care - prevention to health promotion to restoration

Recipient of care - individual to family to community

Provider of care – Relationship Based Care

Leadership role - collaboration to coordination to management

Research application - need identification to information gathering to information analysis

The health status strand focuses on the client's adaptive responses to stress. The student applies knowledge, psychomotor skills, and attitudes learned in the care of well/less well clients to the care of clients in crisis situations. Emphasis is also placed on the students' ability to evaluate personal reactions to increasingly complex nursing process operations.

The focus of care strand guides students first to develop strategies to prevent maladaptive responses and to promote health with well and less well clients. Students build on that foundation in assisting clients in crisis to restore health.

The recipient of care strand refers to the client. The initial focus on the individual gradually enlarges to families and the wider community.

The provider of care strand structures the growth of the student away from dependence on the assistance of faculty to a degree of independence in providing care, and then progresses to interdependence among members of the health team.

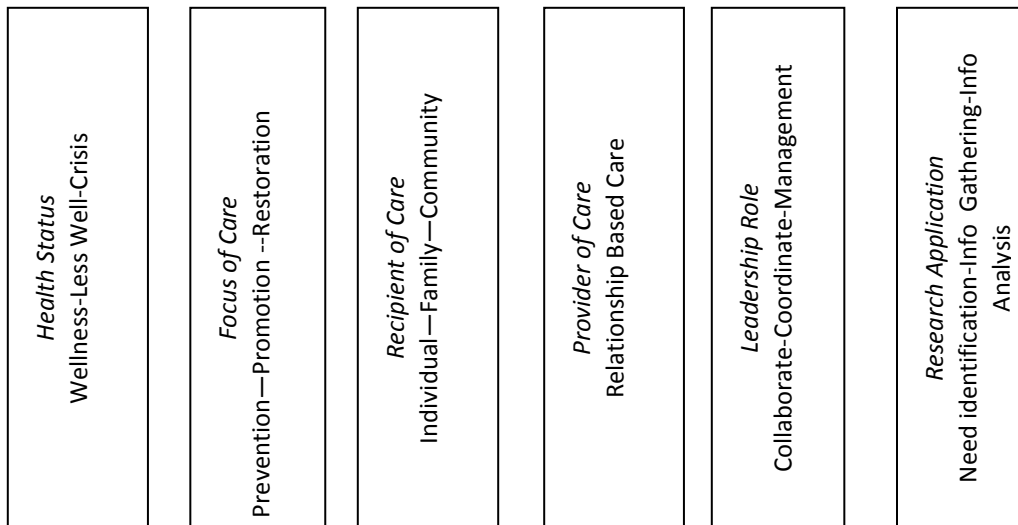
The leadership role strand describes the relationship between the student and members of the health team. Initially the student collaborates while using the nursing process, and subsequently coordinates the plan of care with other members of the team. The student progresses in learning and utilizing management skills to advocate and to influence change.

The research application strand describes the process with which students use nursing research as a basis for nursing practice. The identification of the need for nursing research to underlie clinical practice is followed by a review of the research literature in order to apply findings to clinical practice. To further develop skill in the use of the research process, students identify clinical problems and critique research for its applicability.

Conceptual Framework

NURSING

HEALTH



PERSON

Holistic Person

Nursing Process

Nursing Theory

Legal-Ethical Issues

Teaching- Learning Principles

ENVIRONMENT

West Chester University
DEPARTMENT OF NURSING

Program and Level Objectives

	PROGRAM OBJECTIVES		SOPHOMORE LEVEL OBJECTIVES		JUNIOR LEVEL OBJECTIVES		SENIOR LEVEL OBJECTIVES
I.	EVIDENCES A CONCERNED AWARENESS AND A SENSE OF RESPONSIBILITY FOR CONTEMPORARY HEALTH AND SOCIAL ISSUES AS THESE AFFECT DIVERSE POPULATIONS	1.	Describes social issues and environmental forces affecting diverse populations.	1.	Integrates awareness of the interaction of environmental forces & social issues affecting diverse populations.	1.	Critically examines the interaction of environmental forces and social issues affecting diverse populations.
		2.	Participates as a nursing student in social issues.	2.	Recognizes the interaction between social forces and health care delivery system.	2.	Formulates opinions regarding the interaction between social forces and health care delivery.
		3.	Relates own beliefs to nursing theories.	3.	Communicates beliefs related to the professional practice of nursing to selected clients and other health care consumers.	3.	Interprets current beliefs related to the professional practice of nursing to members of the health team and to society.
II.	PROVIDES LEADERSHIP THROUGH PROFESSIONAL AND CIVIC ACTIVITIES TO ADVOCATE FOR THE IMPROVEMENT OF HEALTH CARE WITHIN SOCIETY	1.	Identifies current issues which affect health.	1.	Analyzes current issues which affect health.	1.	Assumes role as consumer advocate within the health care system.
		2.	Identifies roles of human service and community service groups.	2.	Utilizes human services and community groups to promote and maintain health.	2.	Coordinates promotion of health with human services and community service groups.
		3.	Recognizes the role of professional nursing and health-related com-munity organizations.	3.	Analyzes the role of professional nursing and health-related com-munity organizations.	3.	Supports professional organizations and health related community organizations.
		4.	Describes the political process.	4.	Evidences concern for the political process.	4.	Promotes participation in the political process.

	PROGRAM OBJECTIVES		SOPHOMORE LEVEL OBJECTIVES		JUNIOR LEVEL OBJECTIVES		SENIOR LEVEL OBJECTIVES
III	DEMONSTRATES ACCOUNTABILITY AND COMPETENCY IN USING THE NURSING PROCESS TO ASSIST CLIENTS AT VARIOUS LEVELS OF HEALTH IN A VARIETY OF SETTINGS.	1.	Describes how assessment skills are utilized by the professional nurse.	1.	Demonstrates application of assessment skills in maintaining and promoting adaptive responses in individuals.	1.	Synthesizes the assessment data to assist individual's families/ Communities in restoration of health.
		2.	Discusses how the plan of care evolves from the assessment activities of the nurse.	2.	Establishes a plan of care to meet adaptational needs of the well and less well individual.	2.	Establishes a comprehensive plan of care to meet adaptational needs at any stage along the health continuum.
		3.	Discusses implementation of care for individuals.	3.	Implements the plan to assist well and less well individuals to meet adaptational needs.	3.	Implements the plan to assist individuals/ families/communities along the health continuum to achieve adaptational responses.
		4.	Discusses the evaluation and revision aspect of the nursing process.	4.	Evaluates and revises as needed the implemented plan for the well and the less well individual.	4.	Evaluates and revises as needed the comprehensive plan implemented for individuals/families/communities along the continuum.
IV.	USES NURSING THEORY AND RESEARCH TO SUPPORT NURSING PRACTICE	1.	Identifies nursing theories and concepts which form the basis of nursing practice.	1.	Reviews literature related to nursing theories and concepts involving promotion and maintenance of health.	1.	Critically evaluates nursing theories and nursing research concerning advanced adaptational plan.
		2.	Identifies principles of health based on nursing research.	2.	Applies information from nursing and related research literature to promotion and maintenance of health.	2.	Synthesizes nursing and related research and makes inferences about nursing practice.
		3.	Identifies appropriate sources of nursing research.	3.	Examines nursing and related research literature to acquire information to promote change.	3.	Uses nursing theories and research to promote change within individuals and groups.

Sequence Fall 2007

WEST CHESTER UNIVERSITY
DEPARTMENT OF NURSING
SEQUENCE OF COURSES

**** Begins with students entering Fall 2007

FIRST YEAR STUDENTS**Fall Semester**

◆ WRT 120	Effective WRT I	3
* BIO 100	Basic Biology	3
◆ PSY 100	Intro to Psych	3
SPK	208, 230	
	Communication Studies	3
	Elective	<u>3</u>
		15 credits

Spring Semester

◆ WRT 200, 204, 205, 206		3
	208, 220	
◆ SOC 200	Intro to Sociology	3
* CHE/CRL 107	Gen Chem for Allied	
	Health Sciences	5
* BIO 259	Anatomy & Phys I	<u>4</u>
		15 credits

SECOND YEAR STUDENTS**Fall Semester**

* BIO 269	Anatomy & Phys II	4	
} ◆ HEA 206	Human Development		
	OR		
	◆ PSY 210	Developmental Psych	3
	◆ NTD 303	Nutrition	3
	Nursing Elective	<u>3</u>	
		13 credits	

Spring Semester

W ◆NSG 212	Nursing Theories	3
W ◆NSL 212	Nursing Theories Lab	3
◆ BIO 307	Pathophysiology	3
◆ BIO 204	Microbiology	4
	Diversity course	<u>3</u>
		16 credits

Students must keep the entire clinical day free (T, TH) because clinical hours vary and may extend into or be scheduled during the evening hours.

THIRD YEAR STUDENTS**Fall Semester**

W □ NSG 311	Adaptation I	5
W+□ NSL 311	Adaptation I Lab	5
	Humanities course	<u>3</u>
		13 credits

Spring Semester

W •*** NSG 312	Adaptation II	6
W +• *** NSL 312	Adaptation II Lab	5
•MAT 121	Statistics	3
	Nursing Elective	<u>3</u>
		17 credits

Students must keep the entire clinical day free (T, TH) because clinical hours vary and may extend into or be scheduled during the evening hours.

FOURTH YEAR STUDENTS**Fall Semester**

W ■ }NSG 411	Adv. Adapt Prob. I	6
W+ ■ }NSL 411	Adv. Adapt I Lab	5
	Art Class	3
		<u>3</u>
		14 credits

Spring Semester

W NSG 412	Adv. Adapt Prob. II	6
W+NSL 412	Adv. Adapt II Lab	5
	Humanities	3
	Interdisciplinary	<u>3</u>
		17 credits

Total**120 credits*****over***

ACADEMIC FOUNDATION REQUIREMENTS

1. Two English/Writing courses (6 credits)
WRT 120
WRT 200, 204, 205, 206, 208 or 220
2. One math course – Math 121 required (3 credits)
3. One communication course – SPK 208, 230 (3 credits)
4. Interdisciplinary Course Requirement – one needed (3 credits)
5. Diverse Communities Course Requirement – one needed (3 credits)

DISTRIBUTIVE REQUIREMENT:

1. Humanities (2 courses (6 credits) from 2 of the following areas)
Literature
History
Philosophy
2. Art (1 course (3 credits) from any of the following)
Art, Cinematography, Dance, Music, Photography or Theater.

ACADEMIC PROGRESSION IN THE NURSING MAJOR**Prerequisite to NSG 212 and NSL 212 students must:**

1. Complete BIO 100, CHE 107, CRL 107, BIO 259, and BIO 269 with a minimum composite GPA of 2.75 in these courses.

.....

- + NSL 311, NSL 312, NSL 411, and NSL 412 include evening hours.
- ◆ Prerequisite to NSG/NSL 311 -- core requirements
- Prerequisite to NSG/NSL 312
- Prerequisite to NSG/NSL 411
- Prerequisite to NSG/NSL 412
- W Writing Emphasis Requirement -- three (3) courses needed

Revised fall 2005

May 2006

May 2007

*Fall 2007
120 credits*

WEST CHESTER UNIVERSITY
Department of Nursing
STUDENT ADVISEMENT SHEET *Fall 2007*

NAME _____ SS# _____ PHONE _____
ADDRESS _____
Internal Transfer _____ External Transfer _____

I. Academic Foundation (18 credits)
Requirements

- ◆WRT 120 (3) _____
 - ◆WRT 200, 204, 205, 206
208 or 220 (3) _____
 - MAT 121 (3) _____
 - SPK 208 or
230 (3) _____
 - Interdisciplinary (3) _____
 - Diversity (3) _____
- (can be a nursing elective)*

IV. Physical Sciences, Nutrition (26 credits)

- *CHE 107 (4) _____
- *CRL 107 (1) _____
- *BIO 100 (3) _____
- *BIO 259 (4) _____
- *BIO 269 (4) _____
- ◆BIO 204 (4) _____
- ◆BIO 307 (3) _____
- ◆NTD 303 (3) _____

II. Distributive Requirements (9 credits)

A. Humanities

Recommended courses: *two courses from two of the following areas:*

- Literature (3) _____
- History (3) _____
- Philosophy (3) _____

B. The Arts (3 credits)

Take one course from the following categories: Art, Cinematography, Dance, Music, Photography or Theater

_____ (3) _____

V. Nursing (49 credits)

- ◆NSG 212 (3) _____
- ◆NSL 212 (3) _____
- NSG 311 (5) _____
- NSL 311 (5) _____
- NSG 312 (6) _____
- NSL 312 (5) _____
- NSG 411 (6) _____
- NSL 411 (5) _____
- NSG 412 (6) _____
- NSL 412 (5) _____

VI. Student Electives (9 credits)

- Nursing _____
- Nursing _____
- Elective _____

III. Behavioral and Social Sciences (9 credits)

- ◆PSY 100 (3) _____
- ◆SOC 200 (3) _____
- ◆PSY 210 or HEA 206 (3) _____

*Prerequisite to NSG/NSL 212

◆Prerequisite to NSG/NSL 311

□Prerequisite to NSG/NSL 312

●Prerequisite to NSG/NSL 411

■Prerequisite to NSG/NSL 412

TOTAL (120 credits)

NURSING COURSE DESCRIPTIONS

NSG 109 -- HEALTH ISSUES OF WOMEN, 3 credit hrs, Free Elective

This course encompasses the needs and concerns of women as consumers in our present health care system. Students will examine various biological, psychological, and social topics related to women's health care. This course is offered in the Women's Studies Program, and is open to all students. This course also is a diversity course.

NSG 110-- TRANSCULTURAL HEALTH: PRINCIPLES AND PRACTICES, 3 credit hrs, Free Elective

This course examines the health beliefs and practices of a variety of sub-cultural groups in the U.S. Emphasis is placed on the application of multi-cultural health beliefs to the caring process. (open to all students)

➔ **Although the nursing course descriptions have been separated between theory and clinical components for clarity, students must take the theory and clinical components concurrently at all times.**

NSG 212 -- NURSING THEORIES AND CONCEPTS, 3 credit hrs, Sophomore Year, Spring Semester

In this course the student will examine various nursing theories and concepts; conceptual frameworks; theories from other disciplines which apply to nursing; nursing history; nursing education; professionalism in nursing; the nursing process; leadership; ethical, legal, and political and economic aspects of nursing; introduction to research process; and current issues in nursing. This course serves as a foundation for subsequent nursing courses in the upper division.

PREREQ: BIO 100, BIO 259, 269, CHE 107 and CRL 107. Must have a composite GPA of 2.75 in these classes prior to entering NSG/NSL 212.

NSL 212 -- NURSING THEORIES AND CONCEPTS LAB, 3 credit hrs.

(Must be taken with NSG 212). This clinical experience includes interviewing skills, physical and psychosocial assessment, vital signs measurement, basic hygienic practices, body mechanics, and infection control. Students are required to take a Nursing Lab Practical Exam at the end of this course.

NSG 216 – HEALTHY AGING IN THE NEW MILLENNIUM 3 credit hrs, Free Elective

In this course the student will have the opportunity to form a relationship with a healthy, elderly individual. Students will utilize communication skills through interaction on a one-to-one basis with senior citizens in a private home setting. Students will become acquainted with the problems of day-to-day living and the crises that face this population along with the adaptive strengths and resources that are an essential part of the healthy older person's personality.

NSG 217 -- LOSS AND GRIEVING, 3 credit hrs, Free Elective

What to say and what to do when encountering the universal experiences of grief and/or depression in self or peers is the focus of this course. Concrete measures to help self and peers better cope with these are presented. Barriers which make providing comfort and support to others difficult or uncomfortable are identified and discussed. Effective measures for talking with and helping those who are grieving, depressed, or suicidal are presented and each student is assisted to develop his/her own style in comfortably using selected approaches. Classes will be participatory with minimal lecture.

NSG 218 -- CONCEPTS IN CARING, 3 credit hrs, Free Elective

The emphasis of this course is that caring is a universal concept that can be viewed from various perspectives. Views from the disciplines of nursing, art, literature, and psychology are explored in a quest to develop more fully for each student a personal concept of caring. Nurses, professional experts in the caring business, serves as the guides in a creative journey connecting human caring and the various disciplines. Creativity will be encouraged in this course.

NSG 219 -- COMPUTERS AND THE HEALTH CARE DELIVERY SYSTEM, 3 credit hrs.

This elective course will be of practical importance to any student who is interested in the impact of computers on the health care delivery system. The course is divided into three areas: 1) an overview of the computer; 2) application of the computer to the health care delivery system including the role of the health care professional and the consumer; and, 3) issues pertaining to the computer and the health care delivery system. Use of the computer with a variety of applications and CAI software is integrated throughout the course.

NSG 221 - - SKILLS FOR PROFESSIONAL SUCCESS, 1 credit hr.

This one credit course for level III and IV nursing majors is designed to help students foster clinical judgment skills by focusing on study skills, critical thinking and test-taking. Emphasis is placed on preparing students with skills that are essential for success on the National Council Licensure Examination for Registered Nurses (NCLEX-RN). ** May be required for some students as per the Academic Support Policy. (*see page 39 of the handbook*)

PREREQ: Must be enrolled in nursing courses at 300 or 400 level.

NSG 222 - - ISSUES IN transcultural HEALTH CARE DELIVERY, 3 credit hrs.

This is a systems approach to health care delivery. The course surveys health needs of diverse U.S. populations using a multidisciplinary approach. The course will introduce the origin and evolution of socio-cultural health beliefs as they impact health behaviors and health outcomes of culturally and ethnically diverse individuals and populations in the United States. All concepts in this course will be approached from the perspectives of business/economics, health, and political science. The goal of the course is to promote collaboration among disciplines, improve student communication skills to facilitate their ability to advocate for diverse populations, and improve health care services for diverse populations. This course is an interdisciplinary course.

NSG 310 -- HUMAN RESPONSE TO DISEASE, 3 credit hrs.

Examination of core concepts of alterations of human responses to disease processes at the cellular and systemic level. This course focuses on illness as it affects major body systems. Students will identify and analyze prototypical clinical situations, which will provide a foundation for their nursing practice. This course will link clinical situations to their underlying mechanism of disorder and provide a sound knowledge for the practice of professional nursing.

For Advance 2 BSN students ONLY

PREREQ: Completion of BIO 259 & 269 with a final grade of at least C.

NSG 311 -- ADAPTATION I, 5 credit hrs, Junior Year, Fall Semester

The emphasis of this course is the prevention of illness and promotion of health by assessment of the health status, appropriate intervention, and evaluation of the health promotion plan. The nursing process provides the framework for maintaining wellness in a variety of settings with clients of any age group.

NSL 311 -- ADAPTATION I LABORATORY, 5 credit hrs, Junior Year, Fall Semester

Clinical experiences are provided in agencies where relatively well populations have been identified, such as schools, day care centers, pediatrician's office, health maintenance clinics, childbirth settings, senior citizen's programs, and retirement communities. NSG 311 and NSL 311 must be taken concurrently.

PREREQ: NSG 212, NSL 212 (both NSG/NSL 212 with 73% or above), WRT 120-200, NTD 303, BIO 204, BIO 307, PSY 100, SOC 200, and PSY 210 or HEA 206 (all with 70% or above)

NSG 312 -- ADAPTATION II, 6 credit hrs, Junior Year, Spring Semester

The emphasis of this course is on the maintenance of health and promotion of adaptive responses in clients with chronic health problems. The nursing process is used to assist these clients to adapt to stressors through supportive, therapeutic, palliative, and preventive measures.

PREREQ: NSG/NSL 311 (with at least 73%)

NSL 312 -- ADAPTATION II LABORATORY, 5 credit hrs, Junior Year, Spring Semester

Clinical experience is provided in settings where clients with chronic health problems have been identified. These settings include rehabilitation centers, a child development center, nursing homes, and acute care settings. These environments provide flexibility for students to implement changes for clients and acquire skills which will be utilized in other nursing courses. NSG 312 and NSL 312 must be taken concurrently.

PREREQ: NSG/NSL 311 (with at least 73%)

NSG 314 -- INTERNSHIP, 3 credit hrs, Free Elective (permission of the department)

This course is designed to provide nursing students with the opportunity to enhance knowledge and skills acquired in NSG/NSL 311-312. Students will have the opportunity to participate in the care of a group of clients over a consecutive span of days and to increase their awareness of the professional role.

PREREQ: Successful completion of NSG/NSL 311-312.

NSG 316 -- COPING WITH CANCER, 3 credit hrs, Free Elective

The emphasis of this course is on coping with clients who have cancer. Various physiological and psychosocial effects this disease has on clients and their families will be examined. The course will allow students to explore their own feelings related to cancer and assist them in their contacts with cancer clients. Topics that will be discussed include dealing with loss, pain management, Hospice care, and communication with the cancer client. This course is open to all students.

NSG 317 – WOMEN, SEX AND SEXUALITY, 3 credit hrs.

This course examines ideas and information about women, sex, and sexuality from biological, psychological, political, and social perspectives. Areas of focus include: the importance of sex and sexuality to who women are and how they live; the effect on women of the social construction of women's sexuality; and how increased understanding will change and improve how women see themselves and are served by social institutions.

NSG 318 – SELECTED TOPICS IN NURSING, 1 to 6 credit hrs, (variable credit) Free Elective

An in-depth study of selected, current topics relevant to nursing and health care. This course will emphasize the critical analysis of current topics on health care. Each student will develop a commitment to reading and critiquing nursing literature in professional journals as part of the teaching-learning process.

NSG 320 - - CARE OF THE INNER SELF, 3 credit hrs.

This course focuses on care of the inner self or spirit. The purpose of the course is to prepare one to understand the inner self and to know how to utilize the power within the self to maintain wellness and prevent illness.

NSG 350 - - QRS's BASIC ARRHYTHMIA INTERPRETATION, 1 credit hr.

This course presents methods for identification of normal and abnormal cardiac rhythm and rationale for basic treatment of cardiac arrhythmias. Course content includes review of anatomy, physiology, and electrical conduction system of the heart; skills necessary for normal and abnormal ECG interpretation. If time permits we will investigate current treatment options for arrhythmias, and investigation of advancing treatments for chronic rhythm disturbances (pacemakers, internal cardiac defibrillators, ablation, etc).

Prerequisite: BIO 259 & BIO 269 (with at least a 70%)

NSG 352 - INTERPRETATION OF LABORATORY VALUES, 1 credit hr.

This course will provide an in-depth study of frequently encountered laboratory findings with an emphasis on the critical analysis of these laboratory results and appropriate follow-up. The course will help students to identify and prioritize nursing interventions for the client undergoing laboratory testing to assure quality specimen collection

**NSG 353: SUGGESTIVE THERAPEUTICS FOR THE HEALTHCARE PROFESSIONAL
3 credit hr.**

This course will provide a practical framework for the healthcare professional to structure suggestions and pattern communication with patients. The most recent innovations and research in the field will be presented and a variety of approaches will be synthesized into a comprehensive approach to the practice of suggestive therapeutics.

NSG 367 --NURSING IMPLICATIONS OF DRUG INTERACTIONS, 1 credit hr.

In this course the student will be introduced to essential pharmacological principles and concepts. The nursing process will provide the framework by which students will apply theoretical knowledge in BIO 367 to situations in a variety of health care settings.

NSG 380 - CLINICAL SIMULATION I NURSING, 3 credit hrs.

Students will role play a variety of roles during patient care scenarios using SIM-MAN technology. During scenarios students will assess patient condition, critically think through patient care problems, implement nursing interventions, and evaluate patient outcomes. Students will evaluate performance of self and peers during debriefing sessions for continued improvement in problem solving and patient outcomes.

NSG 401 – ISSUES IN NURSING SCIENCE, 3 credit hrs.

This course will explore a variety of approaches to nursing science including grand and middle range theories and their application to nursing practice. Current issues that affect nursing practice will be addressed.

NSG 407 - CRITICAL CARE PRACTICUM , 2 credit hrs.

The purpose of this course is to provide students who have successfully completed NSG/NSL 312 nursing courses, an opportunity to enhance their knowledge and skills in acute, critical care nursing. This is an off campus course which will allow the student opportunities to demonstrate critical thinking skills in nursing. The students will gain exposure to electrocardiogram interpretation and respiratory ventilator nursing care. The course will also provide an opportunity to learn medications utilized in critical care areas, and to observe the critical care nurse and their responsibilities. This is a clinical elective course and will be limited to 10 students.

Prerequisite: NSG/NSL 312 (with at least 73%)

NSG 410 -- INDEPENDENT STUDY IN NURSING, 3 credit hrs, Free Elective (permission of Department Chairperson)

In this course the student produces an independent research-oriented project under close faculty advisement, on a nursing topic of special interest to the student. Participation in a selected field experience is optional.

NSG 411 -- ADVANCED ADAPTATIONAL PROBLEMS I, 6 credit hrs,
Senior Year, Fall Semester

The emphasis of this course is on the study of adaptive responses that create new stresses which require additional adaptations and frequently interrupt an individual's mode of functioning. The nursing process is used to assist clients in crisis.

PREREQ: NSG/NSL 312 (with at least 73%), and MAT 121 (with at least 70%)

NSL 411 -- ADVANCED ADAPTATIONAL PROBLEMS I LABORATORY, 5 credit hrs.
Senior Year, Fall Semester

Clinical experience is provided in acute care in psychiatric in-patient, and community health settings. NSG 411 and NSL 411 must be taken concurrently.

PREREQ: NSG 312, NSL 312 (with at least 73%), MAT 121 (with at least 70%)

NSG 412 -- ADVANCED ADAPTATIONAL PROBLEMS II, 6 credit hrs, Senior Year,
Spring Semester

NSG 412 is a continuation of NSG 411 with the emphasis on the sub-concepts of decision-making and advocacy. The nursing process is utilized interdependently in approaching multi-health care problems of clients. Special attention is given to inquiry as the student correlates nursing/scientific theories and concepts with identifiable research problems in varied environments. Opportunity is provided in this semester to develop organization and management skills.

PREREQ: NSG/NSL 411 (with at least 73%).

NSL 412 -- ADVANCED ADAPTATIONAL PROBLEMS II LABORATORY, 5 credit hrs,
Senior Year, Spring Semester

Clinical experience is provided in acute care, in psychiatric in-patient settings, and in community health settings. The emphasis during each clinical experience in NSL 412 is on decision-making, advocacy, and the further development of the student's organizational and management skills. NSG 412 and NSL 412 must be taken concurrently.

PREREQ: NSG/NSL 411 (with at least 73%)

NSG 414 - - BREASTFEEDING AND HUMAN LACTATION, 3 credit hrs

This three- credit course is for students seeking in-depth knowledge about breastfeeding and human lactation. Emphasis is on understanding the physiology of human lactation and the health impact on infants and their mothers. The normal process of breastfeeding will be addressed with exploration of the barriers to breastfeeding and as well as the supports available for breastfeeding.

Prerequisites: This course is open to students with junior or senior status. It would be appropriate for majors in nursing, nutrition, or health but not necessarily limited to those majors. The graduate level section of the course is open to students in integrative health as well as community health nursing.

NSG 420 – PHYSICAL HEALTH ASSESSMENT, 3 credit hrs, Free Elective

This course combines comprehensive theoretical and laboratory experience to enable the nursing student to perform a complete holistic health assessment and physical examination of the adult, adolescent, and pediatric client. Opportunity is provided to enhance the participant's ability to collect relevant data via use of appropriate interviewing methods, developmental and physical assessment techniques. Emphasis is placed on effective communication techniques and essential assessment skills.

NSG 480 – ADVANCED CLINICAL SIMULATION IN NURSING – 3 credit hours

In this course students will role play a variety of roles during advanced patient care scenarios using SIM-MAN technology. During scenarios students will assess patient condition, critically think through patient care problems, implement nursing interventions, and evaluate patient outcomes in crisis situations. Students will evaluate performance of self and peers during debriefing sessions for continued improvement in problem solving complex patient care situations and evaluate outcomes.

Prerequisite: NSG/NSL 312 (with at least a 73%)



CLINICAL FACILITIES

A variety of clinical facilities are utilized for the nursing courses. Agencies are selected according to each course's objectives and how those objectives can best be met in the clinical area. A brief description of clinical agencies follows:

- NSL 212** A variety of lectures and laboratory experiences will be provided to prepare students for clinical experiences in a variety of settings. Content and practice in physical assessment wound care, hand-washing, sterile technique, vital signs assessment, body mechanics, and transfer techniques are included.
- NSL 311** The course begins with about three weeks of in-depth lectures and laboratory experiences necessary to prepare the junior nursing student for clinical experiences in a variety of settings with primarily well clients. This is followed by two days a week in a clinical agency and three days a week of lectures. Each clinical experience is of five to six weeks duration. The clinical agencies cover the complete age range from infants to the elderly in settings such as nursery schools; elementary, junior and senior high schools; maternity settings; well-baby clinics; and community and institutional geriatric settings.
- NSL 312** Clinical experience and lectures deal primarily with the maintenance of health and the promotion of adaptive responses in clients with chronic health problems. These clients include physically and mentally disabled children and adults in agencies such as the A. I. duPont Institute, Phoenixville Hospital, and the Chester County Hospital. The student will learn to use the nursing process to assist these clients in adapting to the stresses inherent in their individual health problems through supportive, therapeutic, and preventive measures.
- NSL 411** The nursing process is utilized to assist clients in crisis. Clinical experience is provided in acute care settings, in psychiatric in-patient settings, and in community health settings. Agencies include the Bryn Mawr and Paoli Hospitals, Coatesville VA Medical Center, Phoenixville Hospital, Neighborhood Visiting Nurses Association, and the Chester County Health Department.
- NSL 412** Clinical experience occurs in settings similar to those used in NSL 411, but with the emphasis on decision-making and advocacy.

**West Chester University
Department of Nursing
Nursing 311-312 Clinical Agencies**

- | | | |
|-----------|---|---|
| 1. | Barclay Friends
Cindy Radonovich, Director
Joanie Lovelace, Administrator of Residence Services
700 N. Franklin Street
West Chester, PA 19380 | 610-696-5211 |
| 2. | The Birth Center (observation with instructor)
Denise Roy, Contact Person
916 County Line Road
Bryn Mawr, PA. 19010 | 610-525-6086 |
| 3. | Chester County Hospital
Angela Coladonato, RN, MSN
VP for Nursing Services
701 E. Marshall St.
West Chester, PA. 19380 | 610-431-5000
or 610-431-5350
(maternal-child unit) |
| 4. | Child and Career Disability Services
The George Crothers Memorial School
Ms. Phyllis Peranteau, School Nurse
401 Rutgers Avenue
Swarthmore, PA 19081-2499
Attn: Claire Molton, Assistant Director | 610-328-5955 |
| 5. | Child & Career Development Center
Ms. Sue Mateka, Principal
Sandra Rocker, RN, School Nurse
Jacqueline Auris, Assistant Principal (contact person)
1525 East Lincoln Highway
Coatesville, PA. 19320 | 610-383-7400 |
| 6. | Coatesville Area School District
Angelo Romaniello, Dir. of Special Education
Sue Poskitt, School RN Coordinator
545 E. East Lincoln Highway
Coatesville, PA 19320
Contact person: Diane Jordan | 610-466-2431

610-466-2400

610-466-2431 |
| 7. | Nemours/Alfred I. duPont Hospital for Children
Noreen Watson, Interim Hospital Administrator of Nursing
Nursing Office
P.O. Box 269
Wilmington, DE. 19889
Contact: Tracy Patrick Pancelli, BSN, RN, CPN,
Coordinator of Nursing Continuing Education | 302-651-5079 |

- 8. Head Start of Chester County** **610-383-6800**
 Mr. Leon Spencer, Director
 Maria Rosa, Health Specialist (Contact Person)
 1530 East Lincoln Highway (6 Classrooms)
 SKL Building
 Coatesville, PA. 19320
 Attention: Marian Ramsey
- 9. Kendal-Crosslands Communities** **610-388-7001**
 Director of Kendal at Longwood
 Sandra Scott, Director of Nursing at Longwood
 Kristen Perone, Director of Nursing at Crosslands **610-388-5626**
 Box 100
 Kennett Square, PA. 19348
- 10. Kennett Consolidated School District** **610-444-6608**
 Attention: Nancy Tischer
 Director of Human Resources
 Diane Shannon, KASD, School Nurse Coordinator **610-942-2213**
 300 E. South Street
 Kennett Square, PA 19348-3655
- 11. Kennett Area Senior Center** **610-444-4819**
 Anita O'Connor, Director
 427 S. Walnut Street
 Kennett Square, PA 19348
- 12. John G. Leach School** **302-429-4055**
 Mr. Jack Jadach, Principal
 Claudia Peters, RN, BSN, School Nurse
 Landers Lane
 New Castle, DE. 19720
- 13. Phoenixville Area School District** **610-917-3034**
 Director of People Personnel Services
 301 Gay Street
 Phoenixville, PA 19460
- 14. Phoenixville Hospital** **610-983-1000**
 Sally Strzelecki, Ed.D., RN, CNAA
 Associate Executive Director of Nursing
 140 Nutt Rd.
 Phoenixville, PA. 19460
- Phoenixville Project Prevention/Community Programs** **610-983-1295**
 Anna Mae Galbraith, Community Health Coordinator
 Phoenixville Hospital

- 15. Unionville Chadds Ford School District** **610-347-1700**
Cheryl Fulguit, MS, RN
Unionville Elementary
1775 W. Doe Run Road
Kennett Square, PA 19348
- 16. West Chester Area Day Care Center** **610-696-8447**
Betsy Billie, Executive Director
501 East Nield Street
West Chester, PA. 19382
- 17. West Chester Area School District** **484-266-1000 x1215**
Director of Human Resources
829 Paoli Pike
West Chester, PA. 19380
- 18. West Chester University Children's Center** **610-436-2388**
Ms. Sandy Jones, Director
McCarthy Hall, West Chester University
West Chester, PA. 19383
- 19. YMCA of Phoenixville** **610-933-8860**
Ms. Sue Ellen Plunkett-Masters, Preschool Director
400 East Pothouse Rd.
Phoenixville, PA. 19460
- Wooden Shoe Preschool** **610-935-3505**
Beth Semple, Director
St. John's Church
355 St John's Circle
Phoenixville, PA 19460
Pastor Cynthia Krommes

**West Chester University
Department of Nursing
NSL 411-412 CLINICAL AGENCIES**

1. **Chester County Health Department** 610-344-6251
Margaret Rivello, MBA, CHE, Director
Administrative and Support Services
Government Services Center, Suite 290
601 Westtown Road
West Chester, PA 19382-4532

2. **Chester County Hospital** 610-431-5000
Angela Coladonato RN, MSN
701 E. Marshall Street
West Chester, PA 19380

3. **Coatesville VA Medical Center** 610-383-0216
Rosemary Wharton, Chief, Nursing Service
Coatesville, PA 19320

4. **Community Volunteers in Medicine** 610-836-5990
Jody Hill, RN, CRNP, Vice President of Patient Service
300 B Lawrence Drive
West Chester, PA 19380

5. **MainLine Health Systems**
Rita Linus – Student Coordinator for all MainLine Units
 - a. **Bryn Mawr Hospital** 610-526-3000
Claire Baldwin, RN, MSN
Assistant VP of Patient Services
Lancaster & Bryn Mawr Avenues
Bryn Mawr, PA 19010-3160

 - b. **Paoli Memorial Hospital** 610-648-1015
Cheryl Heinrich, MSN, RN, Staff Development

 - c. **Bryn Mawr Rehab Hospital** 484-596-3917
Barbara Merges, BSN, MHSA, CRRN, Clinical Nurse Educator
414 Paoli Pike
Malvern, PA 19355

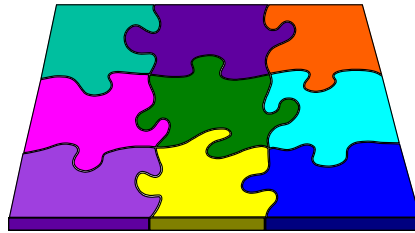
6. **Neighborhood Visiting Nurse Association** 610-696-6511
P. Bush & H. Owen - Student Coordinators
North Hills Medical Building, Suite 206
795 East Marshall Street
West Chester, PA 19380-4412

7. **Pepperidge Farms** 610-873-4400
Ms. Karen Trotman, RN 610-873-4399
Boot Road
Downingtown, PA 19335

8. **Pottstown Memorial Medical Center**
Denise Connelly, Contact Person, 610-327-7442
Student Coordinator
Teresa M. Kelly RN MSN-Chief Nursing Officer 610-327-7004
Roseanne Hanlon Rafter MSN, RN, CS 610-327-7680
Director of Nursing Professional Practice
1600 East High Street
Pottstown, PA 19464

9. **Christina Care Health System** 302-733-1000
Wilmington Hospital
Diane Talarek, Chief Nursing Officer
501 W. 14th Street
Wilmington, DE

III. Overall Program Requirements



III. Overall Program Requirements

A. ADMISSION CRITERIA

In addition to meeting West Chester University entrance requirements, applicants for nursing must have completed work equal to a standard high school course including a minimum of 16 units: four units of English, three units of Social Studies, two units of Mathematics (one of which must be Algebra) and two units of science with a related laboratory or the equivalent. A combined score of 1000 is expected on the SAT examination.

B. TECHNICAL STANDARDS POLICY FOR ADMISSION, ACADEMIC PROGRESSION, AND GRADUATION

Students selected for admission into the Nursing major must verify that they understand and meet these technical standards with or without a reasonable accommodation. A student with a condition who may need a reasonable accommodation to meet the technical standards will be referred to the Office of Services for Students with Disabilities (OSSD) for an evaluation of whether the condition is a disability as defined by applicable laws, and a determination of what accommodations are reasonable. The determination will specifically take into consideration whether the requested accommodations might jeopardize the safety of the patient, and the ability to complete the classroom, laboratory, and clinical coursework required for the Nursing major. The OSSD, with input from the Department of Nursing, will make this determination. Whenever possible, reasonable accommodations will be provided for those individuals with disabilities to enable them to meet these standards and ensure that students are not denied the benefits of, excluded from participation in, or otherwise subjected to discrimination.

Based on the standards benchmarked by ANA Code of Ethics, American Association of Colleges of Nursing, the Commission on Collegiate Nursing Education, PA State Board of Nursing Practice Act, the PA State Board of Nursing Rules and Regulations and the Mission and Values Statements of West Chester University (WCU) the Department of Nursing prepares students to practice nursing safely, proficiently and empathetically and to think critically in diverse and challenging practice settings.

All efforts are intended to build nursing knowledge, develop nursing practice and patient safety, cultivate professional integrity, and ultimately, improve the health outcomes of patients, families, and communities across the life span and continuum of care. The student must have functional abilities that are vital for the delivery of safe, effective nursing care during clinical experiences. Therefore, the Department of Nursing has determined that certain technical standards are requisite for admission, progression, and graduation from all *pre-licensure* nursing programs.

WCU nursing student clinical experiences occur during junior and senior levels and involve functional considerations that are not similar to classroom accommodations. For this reason, applicants and students who seek accommodations prior to or immediately after enrolling in the nursing programs must also request an assessment of the types of reasonable accommodations needed for the clinical training component of the program.

TECHNICAL STANDARDS *continued*

A student must be able to independently, with or without reasonable accommodations, meet the following technical standards of general abilities and those specifically:

General Abilities:

The student must have functional use of vision, hearing, smell and touch so that intake of sensorial information can be received and interpreted by the senses. This sensorial information can be integrated, analyzed, and synthesized consistently in an accurate manner.

Examples (not limited to):

Collect data about skin color changes

Collect data from monitors

Auscultate (listen to) heart and lung sounds

Hear alarms or call bells

Detect smoke from burning materials

Detect odors associated with body fluids

Palpate pulses and detect changes in skin temperature

Motor & Endurance:

The student is expected to encompass gross and fine motor movements to be able to provide safe care to clients. It is expected that student have reasonable physical endurance to perform patient care. A nursing student on a clinical day is expected to have the ability to sit, walk and stand.

Example:

Assessments and patient care require the student to be able to bend, squat, reach, kneel and balance.

Usual clinical settings expect students to be able to carry and lift from floor to shoulder height to overhead. This would include occasionally lifting 50lbs, frequently lifting 25lbs, and constantly lifting 10lbs.

Pregnancy is a healthy state. Fetal exposure to environmental/chemical/microbial stressors in the clinical setting may potentially place the developing fetus at risk. Special precautions are warranted. The nursing student who becomes pregnant must notify the level coordinator. The student must provide a signed consent from her health care

TECHNICAL STANDARDS *continued*

provider stating the student can safely continue with clinical experiences. In addition, the student who is less than six weeks post-partum must provide a letter from her health care provider stating that she is cleared to return to clinical experiences.

A student who suffers an illness, injury, has been hospitalized, or has a surgery is required to bring a letter of clearance to the level coordinator. Depending on the length of the absence, a decision regarding progression in the nursing course will be made by Department Faculty.

Ethical Standards

The student must develop the ability to consistently deliver safe, effective nursing care using sound judgment according to the requirements of the Pennsylvania Nurse Practice Act (<http://www.pacode.com>) and the American Nurses Association Code of Ethics for Nurses (<http://www.nursingworld.org>). The student is expected to exhibit good professional character which is an integrated pattern of personal, academic, and occupational behavior. These behaviors include, but are not limited to, honesty, accountability, maintaining confidentiality, trustworthiness, reliability, and integrity.

Individual patient care must be performed regardless of the patient's race, ethnic group, age, gender, religious, or political preference, ability to pay, gender or sexual orientation. Students are not required to be involved with medical procedures that are in disagreement with individual attitudes and values but are required to learn about these procedures and participate in the professional care of the patient before and after such procedures.

Examples (not limited to):

The ability to distinguish right from wrong

Will not falsify patient's medical record or information

Seek consultation and supervision whenever their ability to provide patient care is compromised because of lack of knowledge or experience

Will not knowingly furnish false information to the other members of the health care profession

Is able to keep promises and honor obligations

Is accountable for their own behavior

Is able to practice nursing in an autonomous role with patients/clients who may be physically, emotionally, or financially vulnerable

Recognize and honor the interpersonal boundaries appropriate to any therapeutic relationship or health care setting

Will promptly and fully disclose facts, circumstances, events, errors, and omissions that could enhance the health status of patient/client or the public and could protect them from unnecessary risk of harm.

TECHNICAL STANDARDS *continued***Essential Behavioral and Social Attributes**

The student must be able to adapt and function effectively to stressful situations in the clinical and classroom settings. Students will encounter multiple stressors while in the nursing program. These stressors may be (but are not limited to) personal, patient care/family, faculty/peer, and or program related.

Compassion, integrity, motivation, effective interpersonal skills, and concern for others are personal attributes required of those in the nursing program. The student must possess skills required for full utilization of the student's intellectual abilities; the exercise of good judgment; the prompt completion of all responsibilities in clinical settings; and the development of mature, sensitive, and effective relationships with patients and other members of the health care team. The ability to establish rapport and maintain sensitive, interpersonal relationships with individuals, families, and groups from a variety of social, emotional, cultural and intellectual backgrounds is critical for practice as a nurse. The student must be able to adapt to changing environments; display flexibility; accept and integrate constructive criticism given in the classroom and clinical settings; and learn to function cooperatively and efficiently in the face of uncertainties inherent in clinical practice.

Examples (not limited to):

The student must be able to exhibit a level of consciousness and attentiveness that guarantees patient safety.

Examples of unacceptable compromise include excessive somnolence, memory impairment, or an inability to retain pertinent details of a patient's situation.

Chronic or recurrent illnesses and problems that could interfere with patient care or safety may be incompatible with nursing education or practice.

Ability to Communicate, Comprehend, Read, and Write English

Must be able to read, comprehend, communicate, and write English at a level that meets the need for accurate, clear, and effective communication with individuals, families, and groups respecting social, cultural and spiritual needs.

Examples (not limited to):

Give clear oral reports

Read graphs

Read and understand English printed documents

Write legibly or record on computer in English in patient record

Be able to communicate effectively on the telephone

Discriminate fine/subtle differences in medical word endings

Report findings to the licensed nurse

TECHNICAL STANDARDS *continued*

Individuals who are unable to meet these technical standards, with or without reasonable accommodation, will not be able to complete the program and are counseled to pursue alternate careers.

In accordance with law and WCU policy, no qualified individual with a disability shall, on the basis of the disability be excluded from participating in West Chester University programs or activities. WCU will provide reasonable accommodation to a qualified individual with a disability. To obtain accommodations, individuals must request them from the Office of Services for Students with Disabilities (OSSD).

C. ACADEMIC PROGRESSION IN THE NURSING MAJOR

Prerequisite to NSG 212 and NSL 212 students must:

1. Complete BIO 100, CHE 107, CRL 107, BIO 259, and BIO 269 with a minimum composite GPA of 2.75 in these courses.

Academic Progression in the Nursing Major *continued*

Prerequisite to NSG 311 and NSL 311 students must:

1. Complete WRT 120; WRT 200, 204, 205, 206, 208 or 220; BIO 204; BIO 307, NTD 303, PSY 100, SOC 200, and PSY 210 or HEA 206 with a minimum of a C- in these courses.

Prerequisite to NSG 411 and NSL 411 students must:

1. Complete MAT 121 with a minimum of C-.

Continued progression in the nursing major requires that the student:

1. Earn a minimum of a C or better in NSG/NSL 212, 311, 312, 411 and 412.
(*see page 139 - WCU Undergraduate Catalog*)

Students who fail to meet these criteria must apply for reacceptance to the nursing major. Students applying to return will be ranked by cumulative GPA with all applicants to the nursing course. Reacceptance will be offered on a space available basis.

Students who return to the nursing major must demonstrate competency in calculation of dosages. The student is required to attain 100% proficiency in the test administered. Students are also to successfully pass the NSL practical exam with a C.

GRADE ACHIEVEMENT REQUIREMENTS

The grade achievement in the remaining courses required for graduation is governed by the current university policy.

If a student must repeat a nursing course, a satisfactory grade (C or above) must be achieved. Non-achievement of at least a C in such cases is considered grounds for dismissal from the nursing major. Unsatisfactory, consistent non-attainment of stated objectives in clinical nursing courses may result in dismissal from the nursing program. At all times, the theoretical and clinical components of the nursing courses must be taken concurrently.

Students may be required to make up theory and/or clinical due to labor disputes.

D. ACADEMIC ACHIEVEMENT AND PROMOTION

In addition to the specific requirements outlined above, students in nursing must achieve the West Chester University level of Quality Point Index for retention and promotion, i.e:

NEW University Probation and Dismissal Policy – Effective Fall 2005

Below is the new University Probation and Dismissal policy **effective for Fall 2005 for all current and incoming students (freshmen and transfers).**

Maintenance of Academic Standards: Probation and Dismissal

A student's scholastic standing at the University is indicated by his or her cumulative grade point average (GPA). Three categories of academic standing have been established: Good Academic Standing, Probation, and Dismissal. A student remains in good academic standing as long as he or she maintains a minimum cumulative GPA of 2.00 for all work taken at the University. Probation and dismissal are actions taken by the University when a student's GPA falls below an acceptable level at the end of the fall or spring term. No student will go on or come off academic probation, or be dismissed from the University for academic reasons, at the end of the summer term. See http://www.wcupa.edu/admin/associateprovost/policies_procedures.html for complete policy.

PLUS/MINUS GRADING

<u>GRADE</u>	<u>QUALITY POINTS</u>	<u>% EQUIVALENTS</u>
A	4.00	93-100
A-	3.67	90-92
B+	3.33	87-89
B	3.00	83-86
B-	2.67	80-82
C+	2.33	77-79
C	2.00	73-76
C-	1.67	70-72
D+	1.33	67-69
D	1.00	63-66
D-	0.67	60-62
F	0.00	59 or lower

For more detailed information on this policy and grades of NG, W, and AU please check the university *Undergraduate Catalog*.

University Repeat Policy: Students may repeat undergraduate college-level courses to improve a grade of F, D, C, or B (not A).

1. No student may use the repeat option more than five times TOTAL. For example, this means repeating five DIFFERENT courses once each, or repeating each of two different courses twice (four repeats) and one additional course once.
2. A single course may not be repeated more than twice.
3. Replacement for the grade in the first attempt occurs automatically at the completion of the second attempt of a repeated course. This constitutes one of the five available repeats.
4. A grade replacement will only take place on the second attempt of a course.
5. When a student completes a third attempt of a course, the grades for the second and third attempts will be used to calculate the cumulative grade point average.

Undergraduate students who *take* and *complete* a course at West Chester may not repeat the course at another institution and have the credits or grade count towards a West Chester degree.

Undergraduates who take a course for graduate credit are subject to the graduate repeat policy. See the Graduate Catalog for information.

Because all students must take and pass both WRT 120 and WRT 200 to graduate, a student who fails either of these courses after three attempts will be dismissed immediately following the third failure, regardless of GPA.

Repeat Course Procedure: The first time a student completes a course for a grade, it is considered the first attempt. The second time a student completes a course for a grade it is considered the second attempt and the first repeat. The third time a student completes a course for a grade; it is considered the third attempt and is the second repeat. The first time a course is repeated, only the second grade is computed into the GPA. The repeat is filed automatically when the second attempt has been completed. If the college-level course is repeated a second time, both the second and third grades are computed into the GPA. Students who complete a course with a fourth attempt or more are in violation of the Repeat Policy and will not earn credit.

E. NURSING CLASS ATTENDANCE POLICY

The faculty believes the interactive process of learning takes place in the classroom and is a part of professional behavior. Attendance in class is mandatory and required for nursing courses. Students are responsible for reading specific attendance requirements in each syllabus.

F. ACADEMIC SUPPORT POLICY

Juniors:

1. Any junior student may register for the academic support course regardless of academic performance. At the conclusion of NSG 311, the academic support course will be **recommended** to NSG 311 students who have an average of 75% or below in test grades in NSG 311 (this does not include seminar, term paper, etc). Juniors, at the conclusion of NSG 312, who have an average of 75% or below in test grades (this does not include seminar, term paper, etc) will be **mandated** to take the 1 credit academic support course as a co-requisite with NSG 411. A letter will be sent to students at the end of the semester informing them that they must add the 1 credit academic support course to their schedule for the following fall semester. A copy of the letter will be placed in the student's file.

Seniors

2. Any senior student may register for the academic support course regardless of academic performance. At the conclusion of NSG 411, students who have an average of 75 or below in test grades (this does not include seminar, term paper, etc) in the fall of the senior year will be **mandated** to register for the academic support course as a co-requisite to continue on to NSG 412.

G. STUDENT RECORDS AND ADVISEMENT

1. Departmental

All students enrolled in the Department of Nursing have access to their records on request. The record may not be removed from the secretary's office. The academic record file includes admission and schedule information, clinical evaluations, copies of student papers, and any other materials the department or student deems important. To minimize the risk of improper disclosure of any kind, academic and disciplinary records (if available) are separated. Data from the counseling and disciplinary records are not available to unauthorized persons on campus or to any person off campus except for compelling reasons. Students may request that certain university and/or personal correspondence is retained in the file.

Students need to provide written consent for records to be shared outside the University.

It may be necessary for accrediting and approving bodies to examine student files as part of their evaluation process.

When students request that materials from their files be forwarded to anyone, either within the University or outside of the University, a written permission form must be completed and signed by the student for this to be made possible.

2. Academic Guidance and Counseling

Guidance within the Department of Nursing is based upon the belief of the university that each student is an individual with unique needs, problems, interests, and aspirations.

The department provides guidance services to students who begin with summer pre-entrance orientation and continues on all four levels. The chairperson meets with all incoming first year nursing students during the summer orientation at the university. Curriculum questions are answered and the general policies relating to the department are reviewed. Uniforms, fieldwork, miscellaneous expenses, and other items of interest to the student are also reviewed.

The Department of Nursing encourages active participation of the faculty in the area of academic guidance and counseling. Each faculty member is assigned student advisees by the chairperson. The faculty member is available for advisement during posted office hours and by appointment. Five hours per week are designated and posted on faculty doors, on the bulletin board outside the nursing lab, and in the nursing office as office hours. Office hours may change from semester to semester because of differences in clinical assignments. Be sure to check.

Each semester students must meet with their advisors to plan their course selection for the following semester. One or two week's prior to registration, master schedules are available on myWCU, in the Nursing Department office, or the nursing lab. Students must access these schedules and plan what courses will be taken the following semester. The student then discusses this selection with the faculty advisor during regular office hours or at special times posted by faculty members specifically for pre-scheduling. Students will then register at scheduled times on myWCU. Students should maintain open communication with their advisor for any academic-related question or concern during the school year. Students may request a change of advisor if needed.

The faculty member may suggest the use of the Academic Advisement Center or the Counseling Center on campus to meet the needs of students. This service is a free choice of the student.

3. Services to Accommodate Students with Disabilities

Please refer to Technical Standards on Page 32

Services to accommodate students with disabilities are also available through the Office of Services for Students with Disabilities (OSSD). The OSSD is located within the Academic Affairs Division of the university. The university's American with Disabilities Act policy statement is located in the undergraduate catalog. The OSSD coordinates accommodations and acts as a liaison with faculty, university offices and external agencies. Academic support services and accommodations are provided for eligible students with physical or learning disabilities. Environmental accommodations, tutoring, coaching, workshops in

Services to Accommodate Students with Disabilities continued

math, career development, study strategies, and a student support group are available through this office. Eligible students must meet the Association on Higher Education and Disability (AHEAD) guidelines for learning disabilities and attention deficit disorders.

It is recommended that students contact the OSSD director as early as possible to allow time for testing or to forward appropriate documentation. To request accommodation or more information contact the OSSD director at:

Office of Services for Students with Disabilities
Lawrence Center Room 105, West Chester PA 19383
(610) 436-2564 (voice)
(610) 436-3217 (TTY)

4. Financial Aid

All requests for scholarships, loans, and employment opportunities should be made to the Director of Financial Aid at 25 University Avenue, West Chester University. Loan and scholarship information is available through the office of Financial Aid and a description of the financial aid programs available at West Chester University may be found in the Undergraduate catalog and the Ram's Eye View.

5. Scholarships

The Anne E. Sell Nursing Scholarship award is available to senior nursing students each year. Students must submit an application to apply in the Fall.

The Centocor Nursing Scholarship award is given to an incoming first year student who meets certain academic requirements.

The Cassandra Kahn Memorial Nursing Scholarship award is available to a junior nursing student. Students must submit an application to apply in the Fall.

The Mary B. Starr Nursing Scholarship award is available to a junior nursing student. Students must submit an application to apply in the Fall.

The Brandywine Health Foundation Scholarships are awarded in the fall and spring to junior nursing students. Information on these awards are distributed to students in class.

H. ACADEMIC DISHONESTY POLICY

The Department of Nursing endorses the university policy on student academic dishonesty as published in the university catalog and Ram's Eye View. See the University Academic Integrity Policy (*WCU Undergraduate Catalog*).

I. GRADUATION

1. NCLEX Examination and Licensure

Students who were mandated to take and do not pass the academic support course and/or do not score at least an 850 on the EVOLVE RN Exit Exam (indicating a good probability of passing the NCLEX-RN exam) during NSG 412 will need to retake the Exit Exam after completing an NCLEX-RN review course at their expense and provide documentation that the course has been successfully completed.

The student who does not score an 850 on the Exit Exam and provide documentation of successful completion of a review course will not be approved by the Department Chair to take the NCLEX-RN exam.

Students must meet all program requirements to be eligible for graduation. Following graduation the graduate is eligible to apply for the NCLEX Examination for registered nursing. The Nursing Department distributes this information.

In accordance with the Professional Nurse Law, felonious acts prohibit licensure in Pennsylvania as indicated by the following:

“The Board shall not issue a license or certificate to an applicant who has been convicted of a felonious act prohibited by the act of April 14, 1972 (P.L. 233, No. 64), known as ‘The Controlled Substance, Drug, Device and Cosmetic Act’ or convicted of a felony relating to a controlled substance in a court of law of the United States or any other state, territory or country unless:

- (1) at least ten (10) years have elapsed from the date of conviction.
- (2) the applicant satisfactorily demonstrates to the Board that he has made significant progress in personal rehabilitation since the conviction such that licensure of the applicant should not be expected to create a substantial risk of harm to the health and safety of patients or the public or a substantial risk of further criminal violations; and
- (3) the applicant otherwise satisfies the qualifications contained in or authorized by the act.

As used in the subsection the term ‘convicted’ shall include a judgment, an admission of guilt or a plea of nolo contendere. An applicant’s statement on the application declaring the absence of a conviction shall be deemed satisfactory evidence of the absence of a conviction, unless the Board has some evidence to the contrary.” (Pennsylvania State Board of Nursing, Professional Nurse Law, September 2009)

2. Temporary Practice Permits

Temporary practice permits are issued by the Pennsylvania State Board of Nurse Examiners to candidates eligible for employment as graduate nurses in Pennsylvania. The employer must have on file a board-approved temporary practice permit before anyone who is not currently licensed in Pennsylvania may be employed as a nurse. If the permit holder fails the first licensure exam, the permit becomes VOID and must be returned to the PA State Board of Nursing.

The TPP application is combined with the Application for NCLEX-RN Exam. Students must apply online to be approved by the PA State Board of Nursing to take the NCLEX.

3. Outcome Assessments

Students must participate in activities designed to evaluate learning outcomes. Current outcome measures utilized by the Department of Nursing are the EVOLVE Exit Exam. The EVOLVE Exit Exam is a requirement for all seniors during NSG 412.

Junior students will purchase the RN Comprehensive Assessment and Review Program from ATI. The RN Comprehensive Predictor will be required in Spring 2012 for all seniors.

IV. Clinical Requirements



A. REQUIREMENTS FOR ALL NURSING STUDENTS PRIOR TO ADMISSION TO NSG/NSL 311 (First clinical course)

1. All Course Prerequisites as Stated in Academic Policies

2. CPR CERTIFICATION REQUIREMENT

Nursing students enrolled in nursing courses with a clinical component (NSG/NSL 311, 312, 411, and 412) are required to be currently certified in Life Support (2-person) Cardio-Pulmonary Resuscitation. Each student is responsible for making his/her own arrangements for initial certification and for renewals. Courses given by the American Red Cross or the American Heart Association are among the acceptable resources for CPR certification. The CPR course must include certification in two rescuer resuscitation and resuscitation of children and infants. Students will not be permitted to participate in clinical experiences until current CPR validation (e.g. CPR card) is submitted to Certified Background. A CPR course is also offered by the Nursing Department each spring.

3. Liability (Malpractice) Insurance

Nursing students are required to have professional liability insurance when enrolled in nursing courses with a clinical laboratory component (NSG/NSL 311, 312, 411, and 412). The face sheet of the insurance policy must be submitted at the beginning of NSG/NSL 311 and 411 to Certified Background. The student may not begin clinical experience until the policy is on file.

Forms for subscribing for insurance are available from the secretary in the Nursing Department. Students may apply on-line and pay for their insurance.

At the present time, students are required to carry coverage in the amount of \$1,000,000/\$3,000,000 to meet the requirements of some of the clinical agencies.

4. Criminal and Pennsylvania Child Abuse History Clearance

In accordance with PA Nursing Law and Child Protective Services Law in an effort to protect client safety and property, students will be required to complete a criminal background check and child abuse history clearance prior to beginning first year classes in the fall and again prior to progressing to NSG/NSL 212, NSG/NSL 311 and NSG/NSL 411. In addition, students will be required to complete Delaware Child and Elder Abuse History Clearance prior to NSG/NSL 312.

Clinical placements may be denied by the clinical site due to felony or misdemeanor convictions, or other adverse findings, and the inability to be placed at a clinical site will prohibit the student from graduating. Since there is not a comprehensive list from clinical sites and licensing agencies, we cannot provide guidance on what would absolutely exclude the student from clinical placement or licensure. However, these decisions are typically dependent upon the nature of the incident, time since the incident occurred, and frequency and type of the incident.

A. REQUIREMENTS PRIOR TO ADMISSIONS TO NSG/NSL 311
Criminal and Child Abuse History Clearance (continued)

It should be noted by all nursing students that the Professional Nursing Law provides that the Pennsylvania State Board of Nursing may refuse applications for professional nursing licensure if the applicant “has been convicted, or has pleaded guilty, or entered a plea of nolo contendere, or has been found guilty by a judge or jury, of a felony or a crime of moral turpitude, or has received probation without verdict, disposition in lieu of trial or an Accelerated Rehabilitative Disposition in the disposition of felony charges, in the courts of this Commonwealth (of Pennsylvania), the United States or any other state, territory, possession or country.” Moral turpitude has been defined by the Commonwealth Court of Pennsylvania as “anything done knowingly contrary to justice, honesty, or good morals.” Determination of whether a crime is one of moral turpitude depends on the element of the crime as they are enumerated under the criminal statute. All crimes in which fraud is an element are looked on as involving moral turpitude. The Board is authorized to reject application for licensure to anyone who has been convicted of a felony or crime of moral turpitude, even if the crime was not related to the practice of nursing or was not committed while in the practice of nursing.

5. Substance Abuse Policy

Students are expected to perform unimpaired. Prior to progressing to the nursing courses, students must have a negative substance abuse result. If a student is suspected of substance abuse, as evidenced by documented impaired behavior, they will be removed from the classroom/clinical setting and may be asked to submit to further testing. Additionally, if the student is suspected of impairment, they will be asked to find arrangements to leave the clinical/classroom site. Further testing and alternate arrangements will be at the expense of the student. This policy is in addition to the West Chester University Student Code of Conduct and the Drug-Free Campus: Policies, Guidelines, and Resources (*The Ram's Eye View Student Handbook*)

Substance Testing

Students must have a test performed at the designated laboratory during the stated testing period before progressing to each of the following courses; NSG 311 and NSG 411 (a total of 2 tests). Tests are performed by a qualified agency or laboratory using standard procedures for maintaining chain of custody. Tested substances are; amphetamines, barbiturates, benzodiazepines, cannabinoids, cocaine, opiates and phencyclidine. Students are responsible for all costs associated with these tests (*typically \$60.00*). Students' results are sent directly to the Department of Nursing. Students with a positive result will be dismissed from the nursing major. Refusal to be tested will result in dismissal from the nursing major.

Drug Testing Form

I, _____ understand that as a requirement for progression in the West Chester University, Department of Nursing, I must submit to a urine drug test at a designated laboratory, which will provide the results of the test to the Chairperson of the Department of Nursing. I understand that if the test result is positive, I will be dismissed from the nursing program.

Student's Signature

Student's Printed Name

Date

6. **FBI Check**

Students must have a FBI check performed before progressing to each of the following courses: NSL 311 and NSL 411 (a total of 2 tests). Students will be given specific instruction on how to complete this requirement prior to NSL 311. Students are responsible for costs associated with this check (typically between \$36-\$38). Student results are accessed directly by the clinical agency. Student access to the clinical agency is at the discretion of the clinical agency based on this FBI check.

7. **Health Requirements**

The physical examination prior to the first clinical year shall be completed by the family physician at the student's expense. A student with significant pathology is examined by university physicians and follow-up examination is performed as deemed necessary. Physical examination records are maintained at the university Health Service. Allergies to drugs and medications are noted on the cover of the clinical record.

A health examination is required for all nursing students at WCU prior to beginning NSG/NSL 311. Health exam prior to NSL 311 need not include urinalysis or CBC, unless indicated by physician. This requirement helps to protect the health of the students as well as the clients with whom you come in contact while providing nursing care. In order to comply with agency requirements, a two-step Tuberculin Skin Test (TST) will be required for all students prior to NSL 311. The two-step test requires you to receive an initial TST, which will need to be read in 48-72 hours and another TST in two weeks, which will need to be read in 48-72 hours. Students with a positive TST must have a chest x-ray completed and have clearance from a health care provider of no active disease. A one-step TST must be completed prior to NSG/NSL 411. Our departmental requirements conform to the rules and regulations of the Pennsylvania State Board of Nurse Examiners in regard to provisions for the protection of students' health.

If a health problem is identified, indication of how the problem will be remediated must be included in the student's health file.

- a. The health report for current sophomores (juniors in the fall) must include:
 1. complete physical examination (complete blood count and urinalysis not needed, unless indicated by physician).
 2. eye examination.
 3. evidence of immunity to Rubella, rubeola, measles, mumps, poliomyelitis, tetanus, diphtheria, **Hepatitis B**, and varicella.
 - a. immunization record - evidence of first 3 series vaccination and booster of tetanus & diphtheria (Td) within the last 10 years OR
 - b. laboratory test results showing positive titer

The **Hepatitis B** immunization process is a three injection series that occurs over a six month period; initial dose, one month later second dose and five months later third dose. Therefore, the vaccination must be started **no later than** the beginning of the spring semester prior to entering NSG/NSL 311. ***

*** **Prior to starting NSG/NSL 311, you must have been vaccinated or show proof of an acceptable titer.**

NO student will be permitted to begin NSG/NSL 311 without completion of **ALL** preclinical requirements.

8. Health Insurance

A group medical and accident policy, approved by the university and covering accident and illness on a twelve-month basis, is available at registration, or from the University Health Service, at a minimal annual premium. Nursing students are required to participate in the Student Insurance Program or to be covered by their own health insurance policy.

B. ADDITIONAL REQUIREMENT(S) FOR ALL NURSING STUDENTS ENTERING THE FIRST CLINICAL ROTATION

1. Successful Completion of Calculations Test

Competency in calculation of dosages shall be a prerequisite for entry into NSG/NSL 311. The student is required to have attained 100% proficiency in calculating dosage as measured by a paper and pencil test administered within the time frame prior to enrolling in NSG/NSL 311. Students who drop back a year because of not meeting pre-requisites for NSG 311, will need to repeat the drug calculations exam before entering clinical and will also need to complete a practical exam with the Nursing Lab Coordinator.

C. STUDENT GUIDELINES FOR COMMUNICABLE DISEASES

The West Chester University AIDS Guidelines serve as an underlying basis for this Communicable Disease Policy.

Nursing professionals including faculty have a fundamental responsibility to provide care to all clients assigned to them, and the refusal to care for those patients is contrary to the ethics of the profession. All clients have a right to humane, quality care.

1. INTRODUCTION

Nursing faculty have a responsibility for instructing students in the provision of care based on sound knowledge and professional values. As all clients are potential carriers of communicable diseases, the ability to care for these clients safely is essential. It is the students' responsibility to inform clinical faculty of exposure or symptoms of any communicable disease.

2. COMMUNICABLE DISEASE POLICY

- a. All Nursing majors, prior to direct client contact, must receive instruction concerning the modes and risks of acquiring and transmitting communicable disease in the clinical setting.
- b. All students, prior to direct client contact, must receive instruction concerning infection control precautions such as the standard precautions presented by CDC in the Morbidity and Mortality Weekly Report. This instruction will also include appropriate response/recommendations in the case of an exposure such as a needle stick injury.
- c. All students must demonstrate knowledge of and skill in the performance of basic aseptic technique *before they begin clinical practicum*. Students who fail to do so will not meet clinical course requirements.
- d. All students will be required to care for clients with communicable diseases.
- e. It is the responsibility of the student to follow the CDC Guidelines in minimizing risk of infection at the clinical setting.
- f. It is the responsibility of the student to obtain the personal protection measures such as immunization/vaccination that are required or recommended by the Dept. of Nursing.
- g. In the case of refusal by a student to care for a client with a communicable disease, the Department of Nursing will pursue the following steps:
 - 1.) The Nursing Student will receive additional education and counseling underscoring the obligation to provide care for all clients who have communicable diseases.
 - 2.) If refusal continues, career counseling will be recommended.
 - 3.) Nursing Students are hereby notified that continued refusal to care for a client with a communicable disease may result in dismissal from the nursing program.

Student Guidelines for Communicable Diseases Adapted from:

Author, (1988). National League for Nursing: AIDS Guidelines for Schools of Nursing. New York.

Author, (1988). Clinical Experience Policy for Faculty. Rhode Island College Dept. of Nursing. Rhode Island.

Author, (1988). Policy Concerning AIDS. Bloomsburg University Dept. of Nursing. Bloomsburg, PA

West Chester University
Department of Nursing
Consent to Release Pre-requisite Clinical Information
to Clinical Agencies

As part of the agreement to have WCU Nursing students at their agency, some of the clinical agencies request that copies of the two step TB screening and /or criminal and child abuse forms be on file at their agency.

I acknowledge that the above information may be sent to the necessary clinical agencies and agree to the release of that information.

Name (please print) _____

Signature _____

Date _____

D. STANDARDS OF SAFE CLINICAL PRACTICE

In all clinical situations, students are expected to demonstrate responsibility and accountability as professional nurses, with the ultimate goal being health promotion and prevention of harm to others. The Department of Nursing believes that this goal will be attained if each student's daily clinical practice is guided by the Standards of Safe Clinical Practice.

Safe clinical performance always includes, but is not limited to, the following behaviors; therefore, I will:

1. Practice within boundaries of the nursing student role.
2. Comply with instructional policies and procedures on implementing nursing care.
3. Prepare for clinical assignments according to course requirements and as determined for specific clinical setting.
4. Provide nursing care that may be required to promote health and prevent illness or further complications.
5. Demonstrate the application of previously learned skills and principles in providing nursing care.
6. Administer medications and/or treatments responsibly according to guidelines provided by the Department of Nursing and agency.
7. Promptly report significant client information in a clear, accurate, and complete oral or written manner to the appropriate person(s).

Acknowledgement

I have read the West Chester University Department of Nursing Standards of Safe Clinical Practice. I understand that these standards are expectations that guide my clinical practice and will be incorporated into the evaluation of my clinical performance in all clinical courses. Failure to meet these standards may result in my removal from the clinical area, which may result in clinical failure.

Signature & Date

Print Name

D. STANDARDS OF SAFE CLINICAL PRACTICE (continued)

During enrollment in the West Chester University School of Nursing BSN Program, all students, in all clinical activities, are expected to practice according to the Standards of Safe Clinical Practice.

Failure to abide by these standards will result in disciplinary action, which may include dismissal from the Nursing Program.

PROCEDURES

1. BSN students will receive a copy of the Standards of Safe Clinical Practice in NSG 212. RN-BSN students will receive a copy in NSG 311.
2. At that time, students will be required to sign a statement that they have read and understand the Standards. This statement will be kept during the student's enrollment in the BSN Program.
3. At the beginning of each subsequent clinical course, the Standards of Safe Clinical Practice will be reviewed with students by the appropriate level coordinator.
4. If any violation jeopardizes patient safety, the student may be removed from the clinical setting.
5. Violation of these Standards will result in the following disciplinary action:

A. First Violation

- 1) Student will be given an immediate oral warning by the appropriate faculty member. The incident will be documented by the faculty member on the *Violation of Standards of Safe Clinical Practice* form. The student has the opportunity to include their comments in the *Student Comments* section of the form. One copy of this form will be given to the student and one copy will be kept in the student's confidential record.
- 2) At the discretion of the faculty member, the student may be required to leave the clinical area for the remainder of the day and may not be allowed to return to the clinical area.
- 3) If the student has not been dismissed and remains in the Program following the above disciplinary action, any additional violation will be documented and referred as above for disciplinary action, which may result in student dismissal from the Program.
- 4) If this violation is of a serious nature, in addition to Step 1 & 2, it may be referred to the Level Coordinator and Level Team for further disciplinary action as in B below. The student will be given notice and have an opportunity to be heard by and meet with the Level Coordinator and Level Team prior to any disciplinary actions.

B. Second and Subsequent Violations

- 1) In addition to 5A, the faculty member will document the incident on the *Violation of Safe Clinical Practice* form. Following discussion of the incident with the student, the faculty member will forward a copy of the form to the Level Coordinator and Chair of the Department of Nursing, for review and recommendation regarding further action. The student will be given notice and have an opportunity to be heard by and to meet with the Level Coordinator and Level Team prior to any disciplinary actions.
- 2) The recommendation of reprimand or dismissal will be forwarded by the Level Coordinator to the Department Chair for review and approval. This disciplinary action process will be documented and placed in the student's confidential record.
- 3) If the student has not been dismissed and remains in the Program following the above disciplinary action, any additional violation will be documented and referred as above for disciplinary action, which may result in student dismissal from the Program.

Student Appeal Procedures:

A student may appeal a first violation processed under section 5.A. 1 & 2 above according to the following procedures:

1. Student may appeal the Violation with the issuing faculty member within 2 business days of the date of the Violation. If the appeal is not mutually resolved, the student may then appeal to the Level Coordinator within 4 business days of the date of the Violation.
2. If the appeal is still not satisfactorily resolved, the student may then appeal to the Department Chair within 2 business days after completion of Step 1.
3. The student may appeal the decision of the Department Chair to the College of Health Sciences Associate Dean within 2 business days after the Chair's decision. The Associate Dean's decision will be the final determination of the University student may appeal a second or subsequent violation or a first violation of serious nature under section 5.A.4 above according to the following procedures:

WEST CHESTER UNIVERSITY
Department of Nursing
Violation of Standards of Safe Clinical Practice Form

Date _____

Student _____

Instructor _____

Time of Incident: _____ Agency: _____

Indicate by Circling: Violation #1 #2 #3

Description of Incident:

Action Taken:

Student Comments:

I understand that I have two business days to appeal this violation with the faculty member.

Student Signature _____ Date _____

Student signature merely indicates they have read this form.

Instructor Signature _____ Date _____

Level Coordinator _____ Date _____

Department Chair _____ Date _____

(Revised & reprinted with permission from Duquesne University School of Nursing)

E. CLINICAL ATTENDANCE POLICY *

Attendance at all clinical laboratory experiences is required in order to meet the educational objectives of each nursing course, except for extenuating circumstances such as illness or personal emergency, i.e., death in family, etc. It is the student's responsibility to notify faculty and the clinical agency if they are unable to be present for the clinical laboratory experience. Notification should occur in a timely fashion, either the evening before or the morning of the clinical experience.

Written documentation supporting the reason for clinical absence is required on the first clinical day following the absence.

The course faculty evaluates student's attainment of clinical objectives. Faculty will determine the learning experiences necessary to make up for clinical laboratory absence.

F. ATTENDANCE AT PROFESSIONAL CONFERENCES

Students may submit a written request (two weeks in advance) to be excused from a classroom and/or clinical laboratory experience in order to attend a professional meeting,* to be limited to one per semester.

*** e.g., Student Nurses' Association Convention, continuing education program, or poster presentation.**

NOTE: *A job interview does not meet the criteria of a professional day.*

G. TRANSPORTATION TO CLINICAL AGENCIES

As stated in the University catalog, students are required to supply their own transportation to clinical facilities.

**** Please note** – some rotations will require students to have their own means of transportation during the clinical day. Car pooling and/or public transportation to clinical during those rotations are not feasible.

H. DRESS CODE

The faculty believes that the appearance of a nurse is important. The nurse is part of the patient's environment for healing. The Department of Nursing designates a standard dress code and requires that the student obtain the necessary items prior to entering the first clinical practicum. These items include:

DRESS CODE (continued)

1. Navy blue uniforms with logo may be purchased by the student for many of the hospital settings.
2. A photo identification tag that includes three lines as follows:

**Student's name
West Chester University
Nursing Student**

3. A yellow polo shirt that is purchased in the WCU Bookstore is required in community facilities and is worn with either black or khaki pants.

The following outline states other requirements of the dress code by the Student Affairs Committee, accepted by the West Chester University Department of Nursing faculty, May 1976 and last revised in May 2010.

In addition to below, students must comply with individual institution policies regarding dress code.

Dress Code:

Hair	--	neat and preferably no longer than to the collar
Jewelry		
Earrings	--	small, pierced, inconspicuous, non-dangling earrings are acceptable
<i>Watch</i>	--	<i>a watch with a second hand is necessary</i>
Other	--	wedding bands are acceptable
Makeup	--	lightly worn facial makeup is acceptable
Nails	--	no artificial nails nails not to exceed ¼ inch in length clear nail polish is acceptable
Name Pin	--	must be worn as part of the uniform
Shoes	--	comfortable, white, or flat
Stockings or Socks	--	plain white, to be worn consistent with the requirements of the assigned clinical agency

I. STUDENT EMPLOYMENT

Employment in health care settings is not required for students in the nursing program. However, many students choose to work part-time during the school year and/or full-time during the summer vacation period in hospitals, nursing homes, rehabilitation centers, or other health care agencies. In most instances they are employed as nursing assistants or in dealing with clients and families.

When seeking or accepting employment in a health care agency, students should be acutely aware of Section 21.112a of the Rules and Regulations of the Pennsylvania State Board of Nurse Examiners, as follows:

"If students are employed in health agencies, they may not be employed as registered or practical nurses unless they are currently licensed."

Nursing students employed in any position involving client care must work under the direct supervision of a registered nurse, and must not perform any tasks or accept any responsibilities reserved for practical nurses by the Practical Nurse Law of Pennsylvania or for registered nurses by the Professional Nursing Law, which governs the practice of professional nursing in Pennsylvania. Violation of these guidelines could result in a malpractice lawsuit being brought against the student.

In some health care agencies an attempt has been made recently to encourage or even require nursing student employees to perform functions which are legally reserved for RN's or LPN's. Students applying for a position in a health care agency should always ask for a detailed job description and job title. Any description or title other than a standard one such as "nursing assistant," "nurse aide," or "ward clerk" should alert the student to investigate further, probably through discussion with her faculty advisor. "Nurse extern" is one example of a title which can confer inappropriate and/or illegal responsibilities on a student who accepts it prior to graduation.



V. Student Activities



STUDENT ACTIVITIES

A. CLASS OFFICERS

Class officers will be chosen at the beginning of NSG 311 by a nomination and election process. There will be a reelection at the beginning of NSG 411.

- President
 - Oversee officers, meetings, fundraising activities;
 - Develop and oversee class subcommittees;
 - Oversee class activities;
 - Follow through with activity suggestions of the class;
 - Assign officers to subcommittees;
 - Maintain responsibility for communication to faculty advisor.
- Vice President
 - Present ideas to and communicates with class;
 - Seeks nominations from NSG 212 class;
 - Responsible to fundraising details such as communication with vendor, students, and faculty advisor;
 - Responsible for senior activity details such as dinner, pinning, and pictures;
 - Serves as class President if President is unable to fulfill responsibility.
- Treasurer
 - Set up SSI class account;
 - Deposits and withdraws funds;
 - Maintains receipts;
 - Submits financial log to faculty advisor;
 - Advisor to class for budgetary concerns.
- Secretary
 - Takes meeting minutes;
 - Maintains web-based communication with the class;
 - Development/analysis and dissemination of class surveys and voting outcomes.

B. STUDENT OFFICERS

The following behavioral standards are delineated for the role of student officers:

- All volunteers for student officer must be approved by Department Faculty
- The student officer will adhere to all Student Codes of Conduct set forth in the *Ram's Eye View* pages 60-69.
- The student will assume responsibility for all of the financial affairs of the class. This includes but is not limited to: maintaining accurate documentation of the SSI Students' account; providing documentation for deposits/withdrawals to the faculty advisor, as well as receipts from vendors with documentation of class earnings for each fundraiser. A financial report will be given at each Student Affairs Committee meeting and documented in minutes.

- The student will assume responsibility for accurate and timely communication with the class for all class activities and events
- A minimum of 2 will be present for all Student Affairs meetings, or will ensure that the alternate is available as a proxy for all student affairs meetings.
- If an officer is unable to serve for any reason, a special election will be held to replace that officer.

Each student officer is expected to adhere to standards of professional and ethical practice. Should the student officer behave in such a manner that calls their practice into question (e.g. unsafe clinical practice violation, violation of academic integrity) their position as the class officer may be revoked by department faculty.

C. STUDENT AFFAIRS COMMITTEE

The Student Affairs Committee has been designed to facilitate interaction between faculty and students. Faculty and class officers plan and coordinate the Mary Kline Lecture Series and Professional Day, the Pinning Ceremony, and additional informal gatherings.

D. WCU NURSING VIEW

The student newsletter is published twice a year for the purpose of informing students and faculty of interesting events and news. All are welcome to contribute to the newsletter.

E. SNAP (STUDENT NURSES ASSOCIATION OF PENNSYLVANIA)

One of the goals of the Nursing Department is to encourage a commitment to professional nursing. The SNAP organization offers a means for students to achieve that objective. SNAP helps build professional nursing interests and aids in the development of the whole person through various educational programs and services which encourage nursing students to participate in interdisciplinary activities. SNAP gives students an opportunity to be involved in nursing and prepares the student for future memberships in nursing organizations such as The American Nurses Association (ANA) and The National League for Nursing (NLN). SNAP is a state constituent of the National Student Nurses Association (NSNA).

All students are invited to join SNAP/NSNA. Since West Chester SNAP is a constituent of NSNA, its members are entitled to send delegates to both state and national conventions. The number of delegates to which our SNAP is entitled depends on the number of NSNA members we have. Other students can attend these annual conventions and are encouraged to do so. WCU SNAP also gives services to organizations such as the Red Cross Bloodmobile and the West Chester Senior Citizens Center, and has participated in health fairs at local shopping malls.

F. MARY KLINE LECTURE SERIES AND PROFESSIONAL DAY

An annual campus-wide lecture series has been established by the Department of Nursing to honor Mary L. Kline, a distinguished member of the nursing faculty who retired in 1983 after fourteen years of dedicated teaching and service to the university. These lectures are held annually in the fall semester.

Several other professional activities are also planned for this day, including panel discussions and opportunities for contact with potential employers and graduate education programs.

**G. SIGMA THETA TAU INTERNATIONAL HONOR SOCIETY OF NURSING,
Xi Delta Chapter**

The Honor Society of the Department of Nursing, West Chester University, was established in the spring of 1985. The first induction ceremony for the society was held on March 24, 1985. On April 17, 1994, the Honor Society was chartered as Xi Delta Chapter of Sigma Theta Tau International Honor Society of Nursing in a ceremony conducted by Elizabeth Carnegie, DPA, RN, FAAN, Member of the Board of Directors of Sigma Theta Tau. The purposes of this society are to recognize superior achievement, recognize the development of leadership qualities, foster high professional standards, encourage creative work, and strengthen commitment to the ideals and purposes of the profession.

Membership is open to undergraduate and graduate students enrolled in the nursing program who have demonstrated superior scholastic achievement and potential for professional leadership as well as to community nurse leaders. Undergraduate candidates must have achieved a grade average of at least 3.25 and be in the top one-third of their class; graduate students are eligible if they have achieved a grade-point average significantly higher than the minimum requirement for graduation. This should be at least a 3.5 on a 4.0 scale. Community nurse leaders must have a minimum of a baccalaureate degree and have demonstrated marked achievement in nursing education, practice, research or publication.

H. PINS

After having successfully completed the nursing major, senior students have the option of purchasing a pin representing graduation from the West Chester University Department of Nursing. These pins are usually awarded at a department Pinning Ceremony during graduation week. More information will be available at senior class meetings.

I. AWARDS**1. Faculty Award**

Annually, in May, the Department of Nursing faculty members select one graduating senior and one graduate student to receive the Faculty Award, presented "in recognition of outstanding ability and exceptional commitment to professional nursing." The award consists of a certificate and the student's name is engraved on a plaque which is permanently displayed in the Department of Nursing.

2. Academic Excellence Award

Presented by the Xi Delta Chapter of Sigma Theta Tau (STT) International Honor Society of Nursing to a graduating senior student and STT member, who has demonstrated an exceptional academic record.

3. Elise Triano Award for Excellence in Pathophysiology

Presented to the nursing student achieving the highest grade in Pathophysiology.

J. SCHOLARSHIPS

- 1. The Anne E. Sell Nursing Scholarship** is awarded each fall to two senior nursing students. Application guidelines are available in the Nursing Department.

Anne E. Sell Memorial Nursing Scholarship
West Chester University
Department of Nursing

The Department of Nursing of West Chester University awards nursing scholarships annually to two senior nursing students. The students must be enrolled full time in the Level IV courses as of September to be eligible for this award.

The criteria for selection are scholastic ability and financial need. Applications must be submitted by **September 30th** to Department Chair. Recipients of the scholarship will be recognized at the annual Mary Kline Lecture Series and Professional Day in the fall.

NAME _____

SOCIAL SECURITY NUMBER _____

ADDRESS _____
Street City State Zip

PHONE NUMBER _____

CUMULATIVE GRADE POINT AVERAGE _____

DATE OF INITIAL REGISTRATION AT WCU _____

OTHER SOURCES OF FINANCIAL AID _____

Supporting Credentials

1. Letter of recommendation from a professor who knows you and your academic ability.
2. Statement by the applicant of future professional goals, academic ability, and any other information that you wish to share.
3. General statement of financial resources and need.

Please return this form and the supporting credentials to:

Dr. Charlotte Mackey
Department of Nursing, Room 222 D
Sturzebecker HSC
West Chester University
Phone 610-436-3474