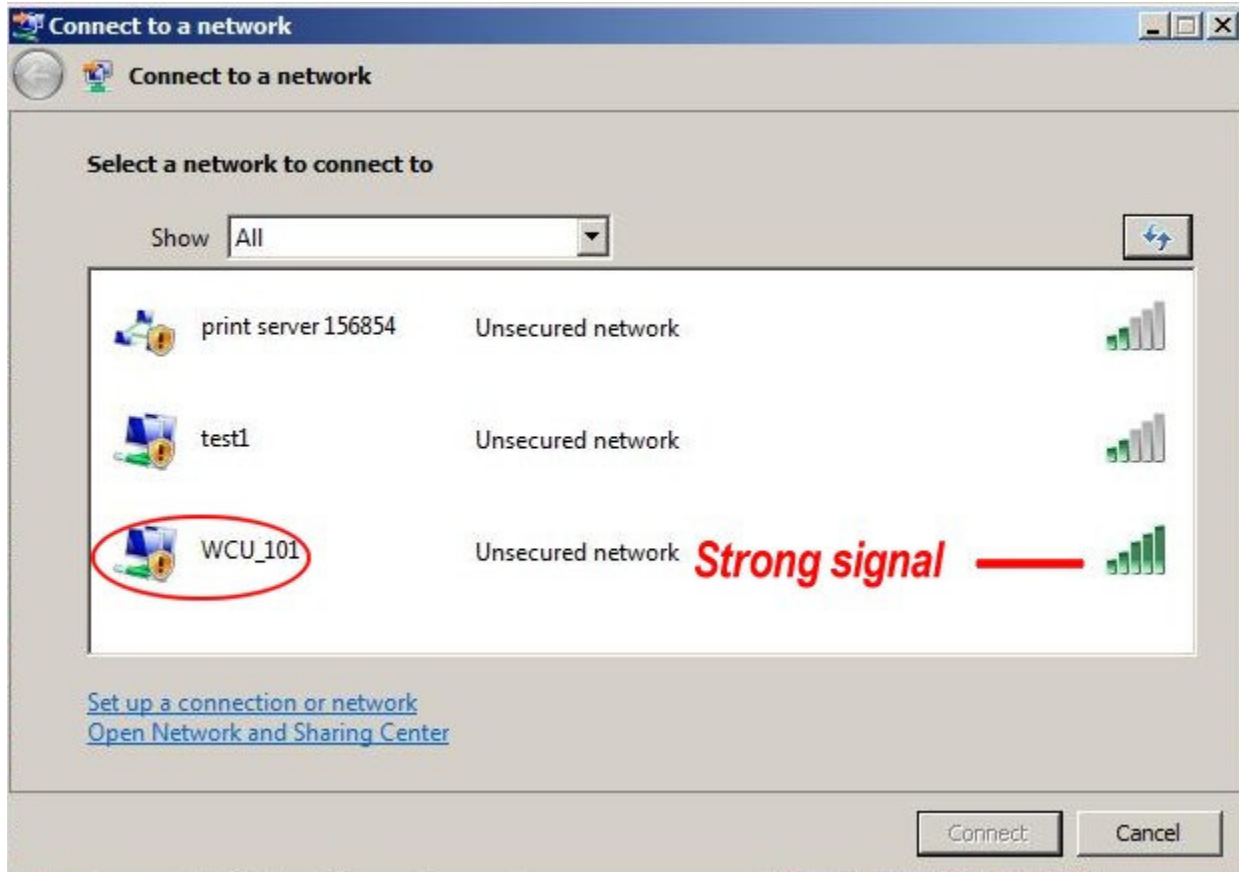


Connecting to the Wireless Network Using Vista

- Click Start > Connect To



If you see WCU_101, simply choose the WCU_101 and then click **Connect**. When you are notified that you have successfully connected, open a browser and type in a URL. You will get the Wireless Zone login screen. Enter your WCU userid and password and you will then be directed to the URL you entered.

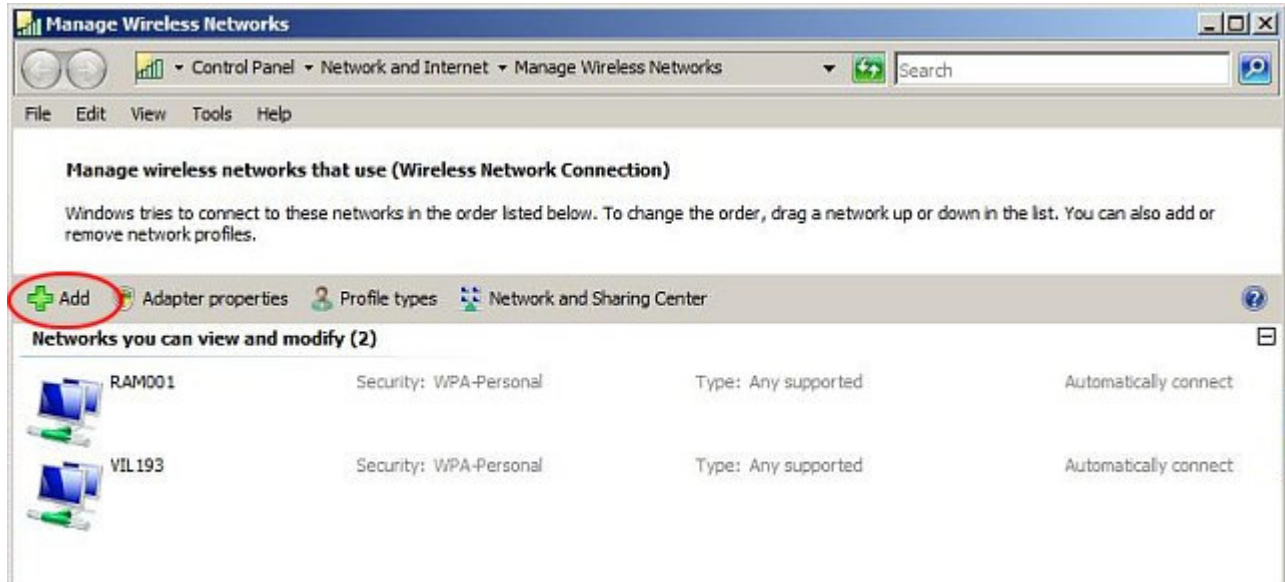
What if WCU_101 does not appear as an available network?

Try refreshing the network list a few times. If that does not work then create a connection manually by following these steps:

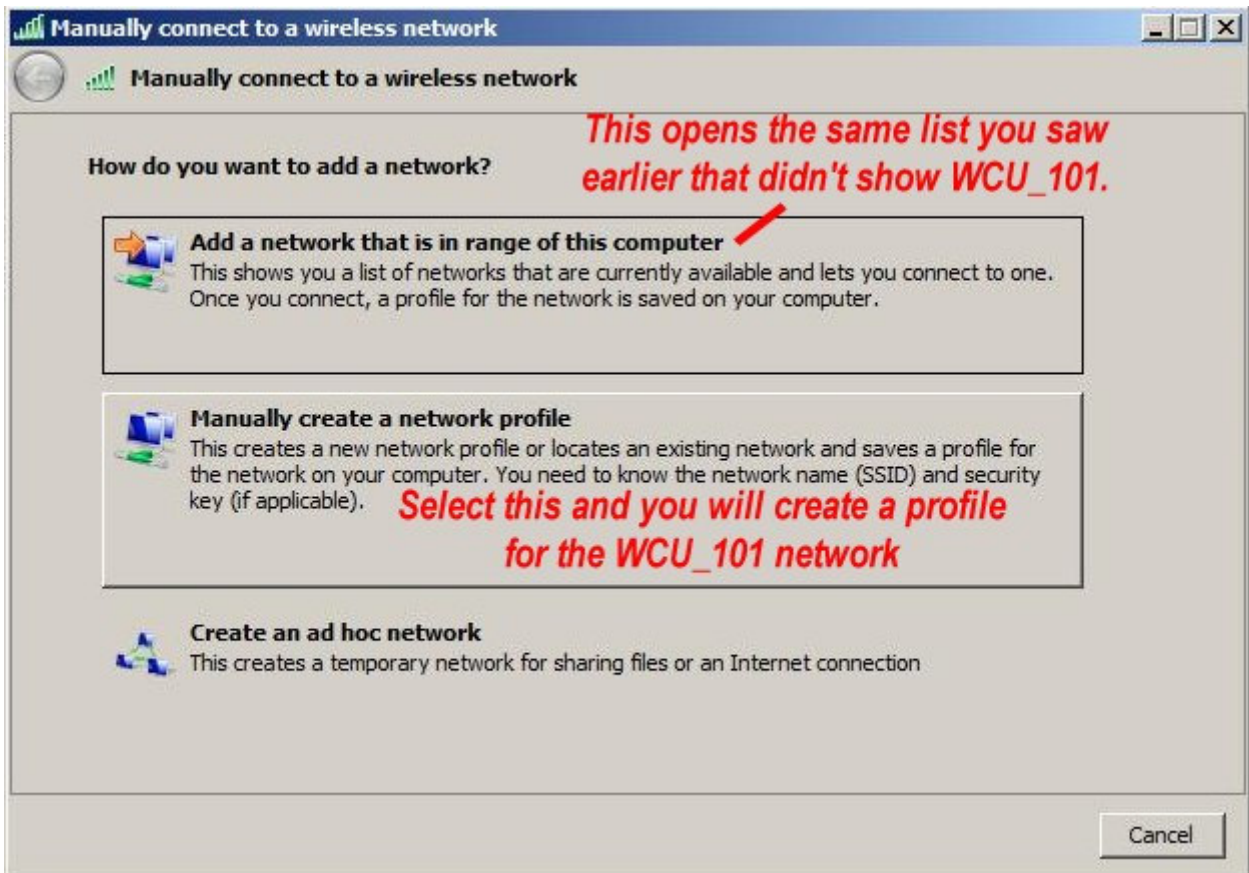
Go to **Control Panel > Network and Internet > Manage Networks**

That takes you to the screen that lets you manage your wireless connections. If you see WCU_101 here but it wasn't showing up as an available network then you may need to change some settings for that connection. Skip ahead to **Configuring Your Connection**.

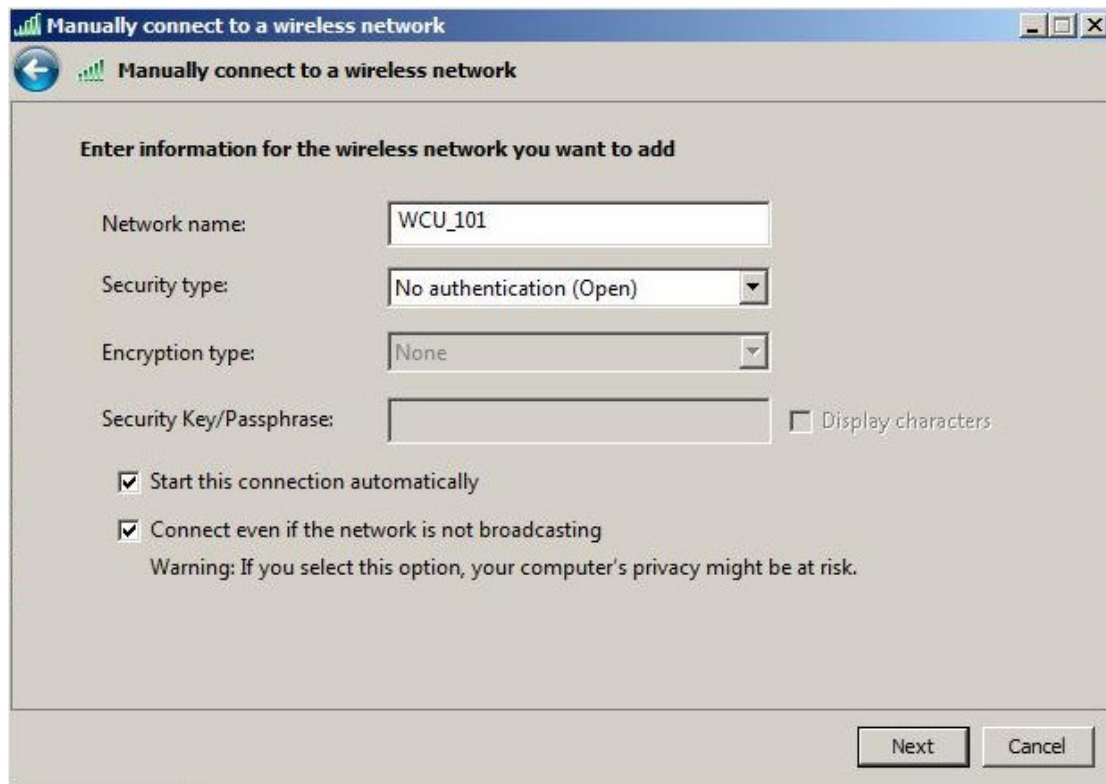
Here are the steps to create a wireless connection yourself:



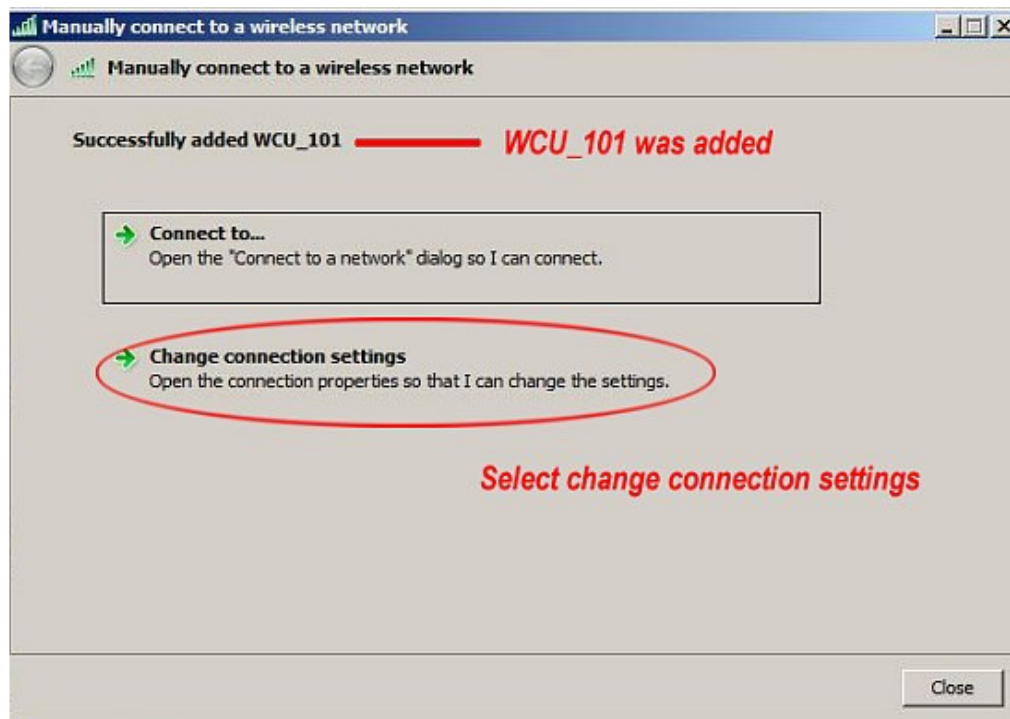
- Click on the Add link on the screen.
- On the next screen, select **Manually create a network profile**



- At the next screen enter the information shown below

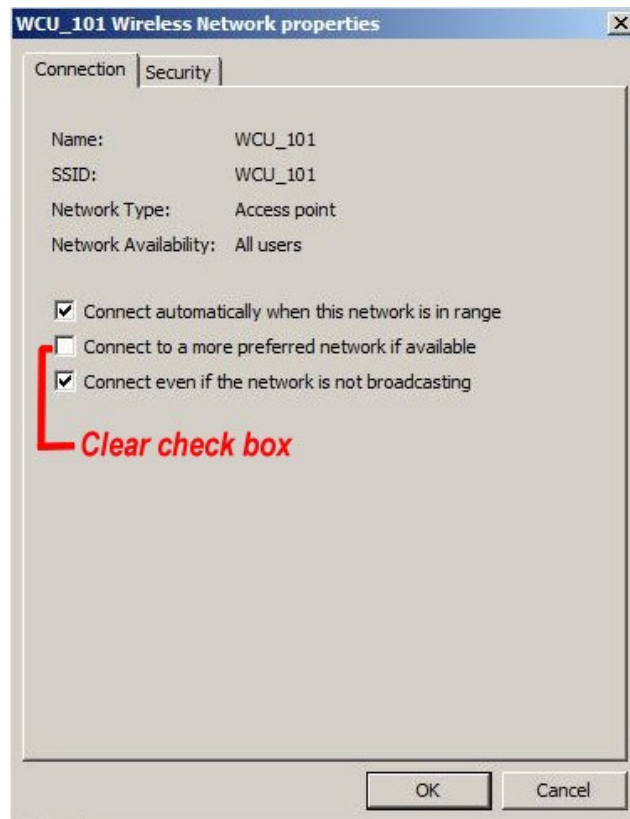


You will get the confirmation that the network has been added



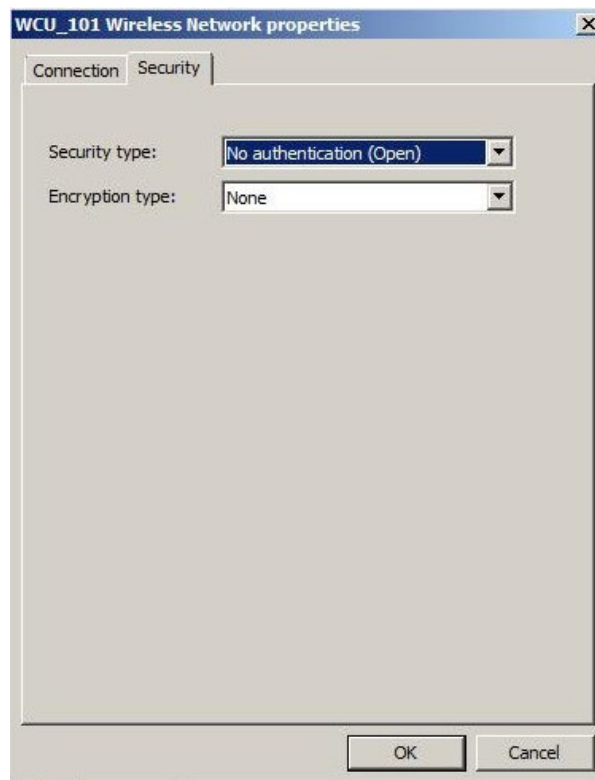
- Select **Change connection setting**

The **WCU_101 Wireless Network properties** screen will appear.



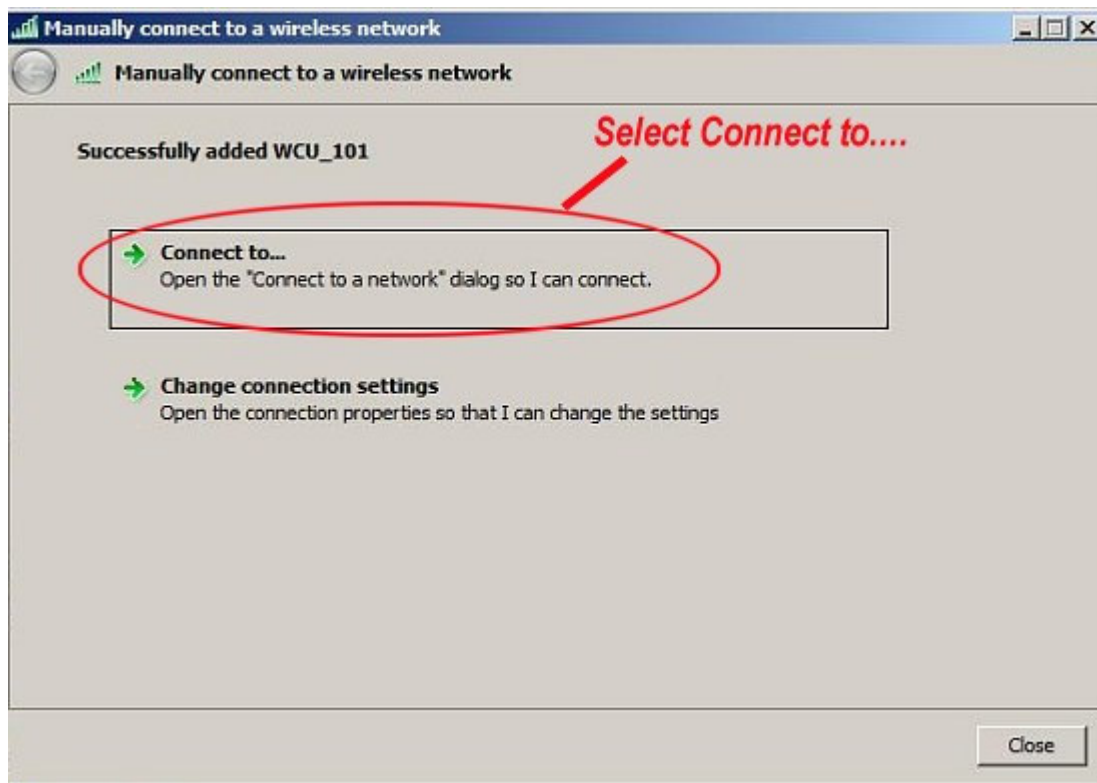
On the **Connection** tab:

- Check the the top and bottom boxes and uncheck the middle box as shown above.
- Select the **Security** tab

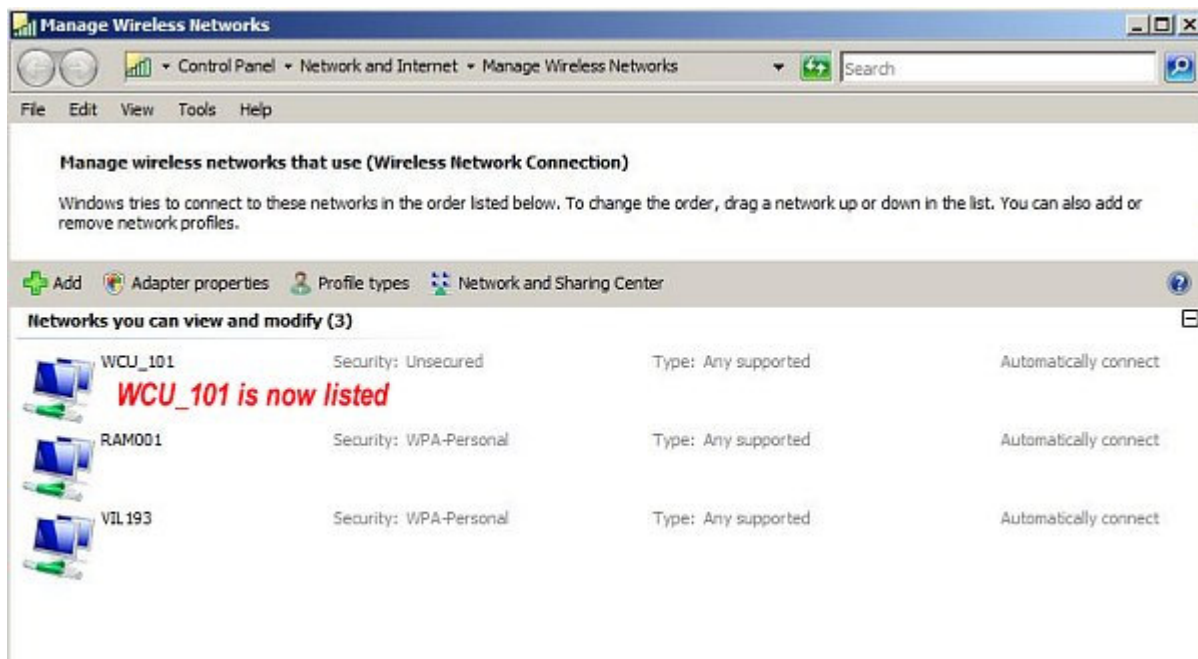


- Set the **Security type** to: No authentication (Open) and **Encryption type**: None

- Click **OK** and you will return to this screen:

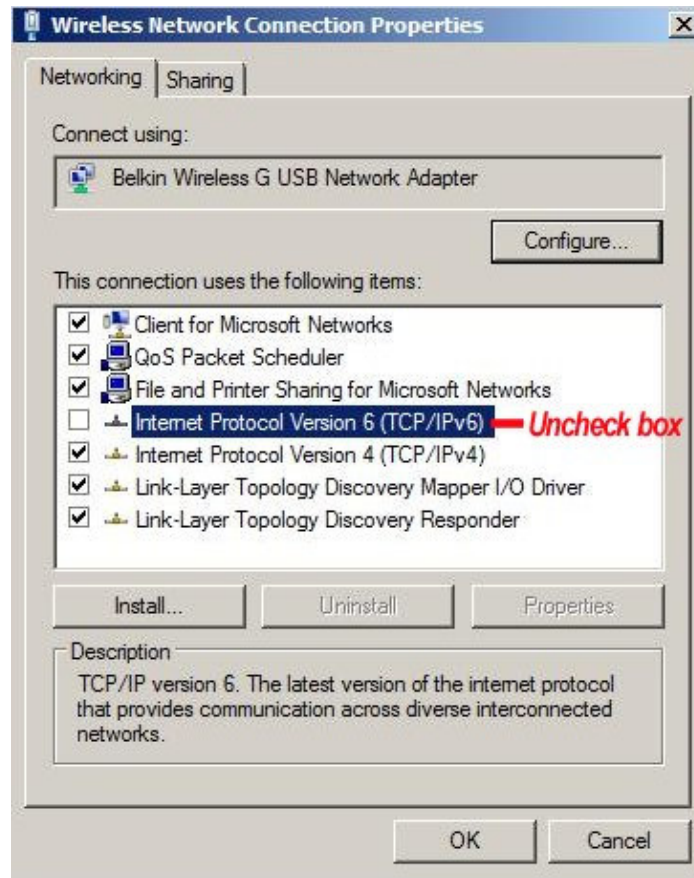


When you select **Connect to**, the available networks will display along with the newly defined WCU_101



Configuring Your Connection

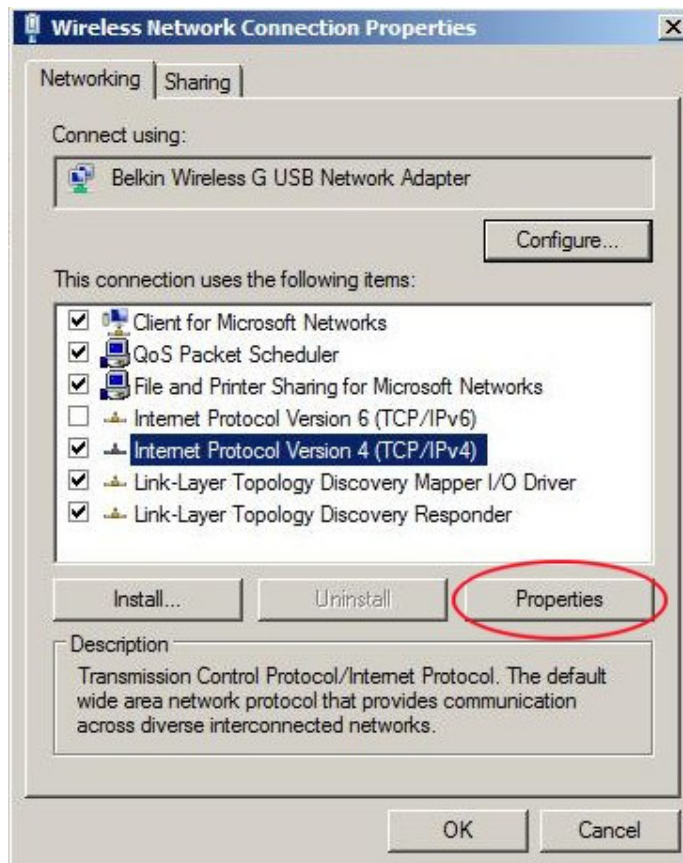
On the **Manage Wireless Networks** screen, right click WCU_101



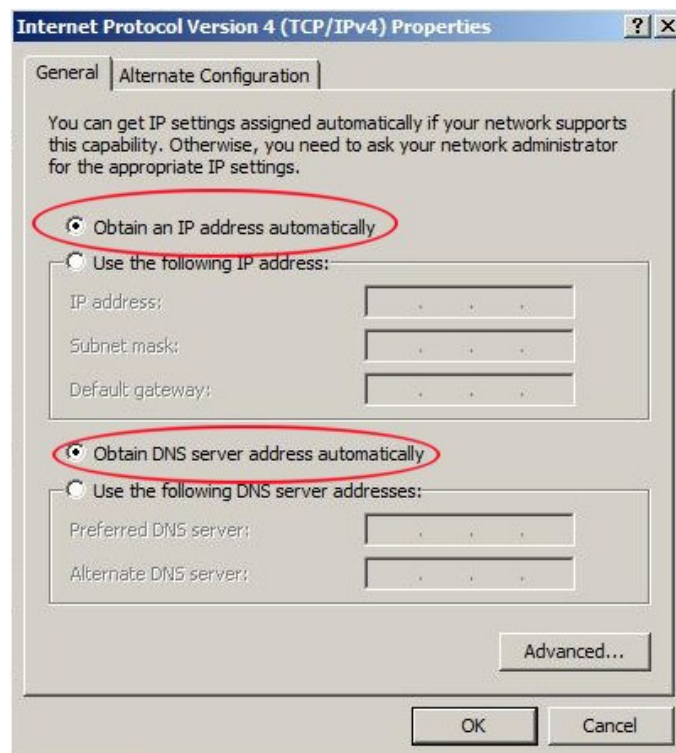
On the **Networking** tab

- Uncheck the box labelled: **Internet Protocol Version 6 (TCP/IPv6)**

- Click **Internet Protocol Version 4 (TCP/IPv4)**



- Click on **Properties** button



- Make sure both obtain their info automatically

- Click the Advanced button and make sure under the **IP address** label it says **DHCP Enabled**
- Click **OK**.
- Close the **Connection Properties** Window

Now you have a properly configured connection for WCU_101 and should be able to connect automatically when you are in range of a wireless signal. See the [Wireless Locations](#) for list of wireless zones on campus.