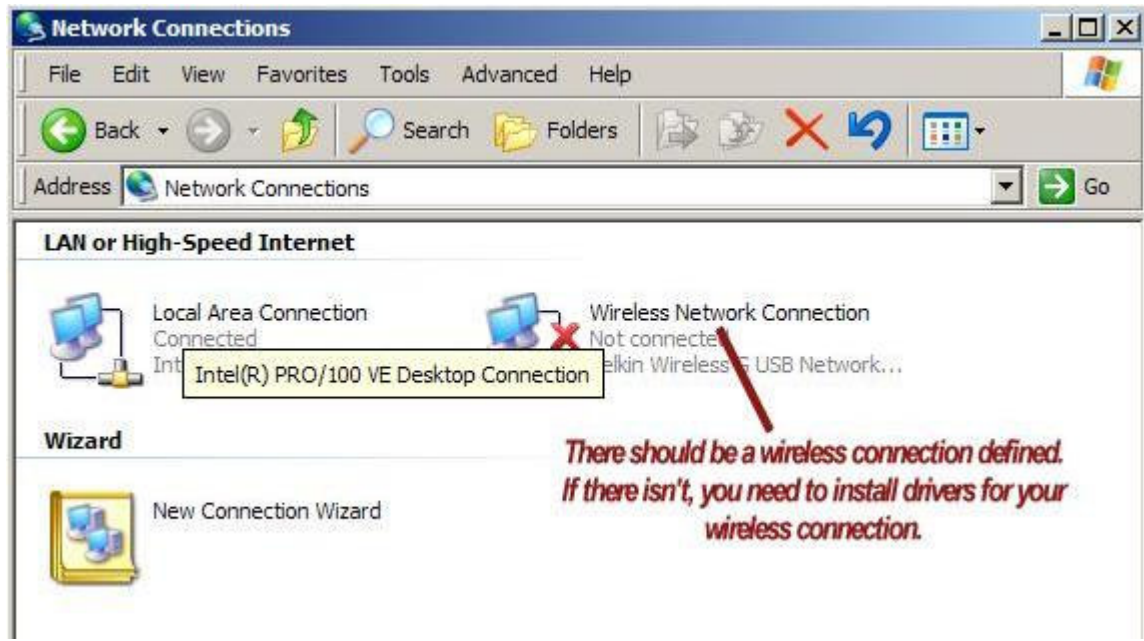


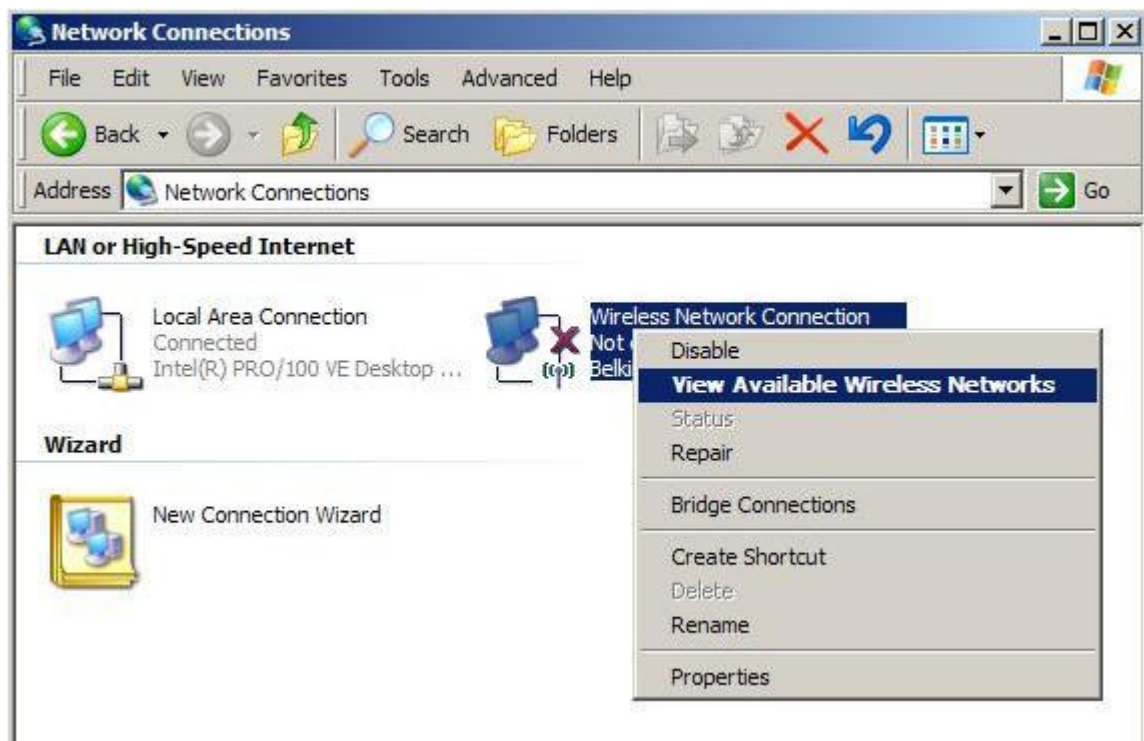
Connecting Your Computer to the Campus Wireless Network

Provided by ResNet

Click Control Panel > Network Connections



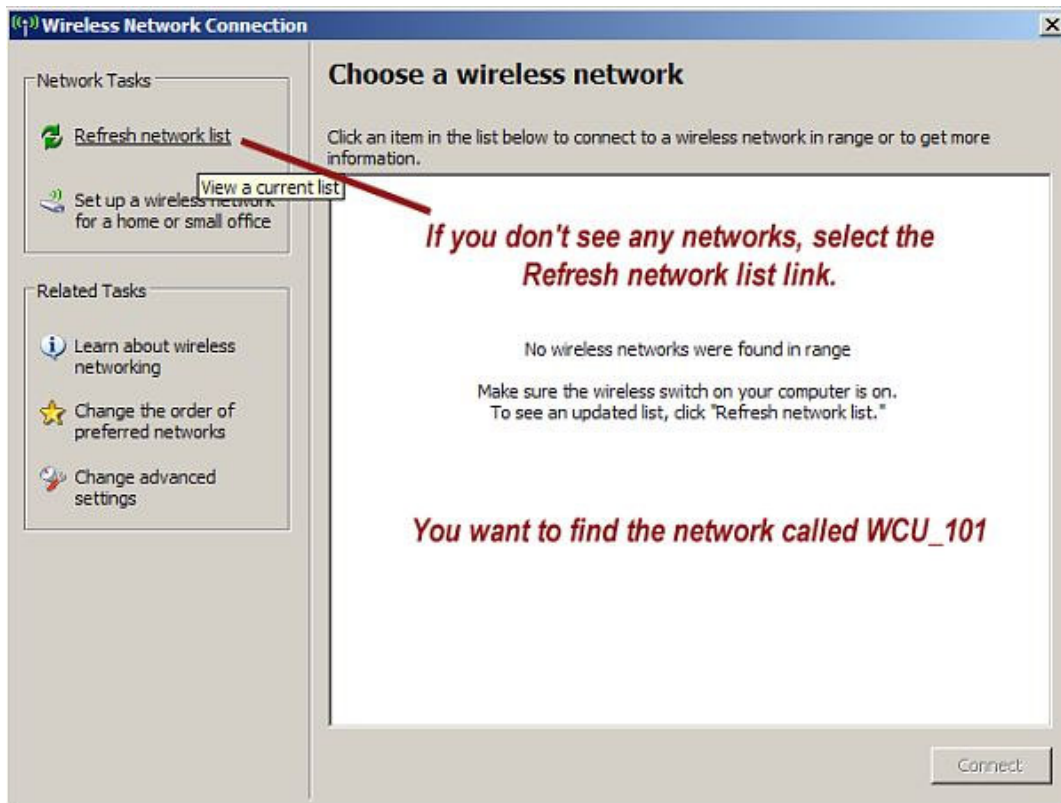
Right-Click the Wireless Connection



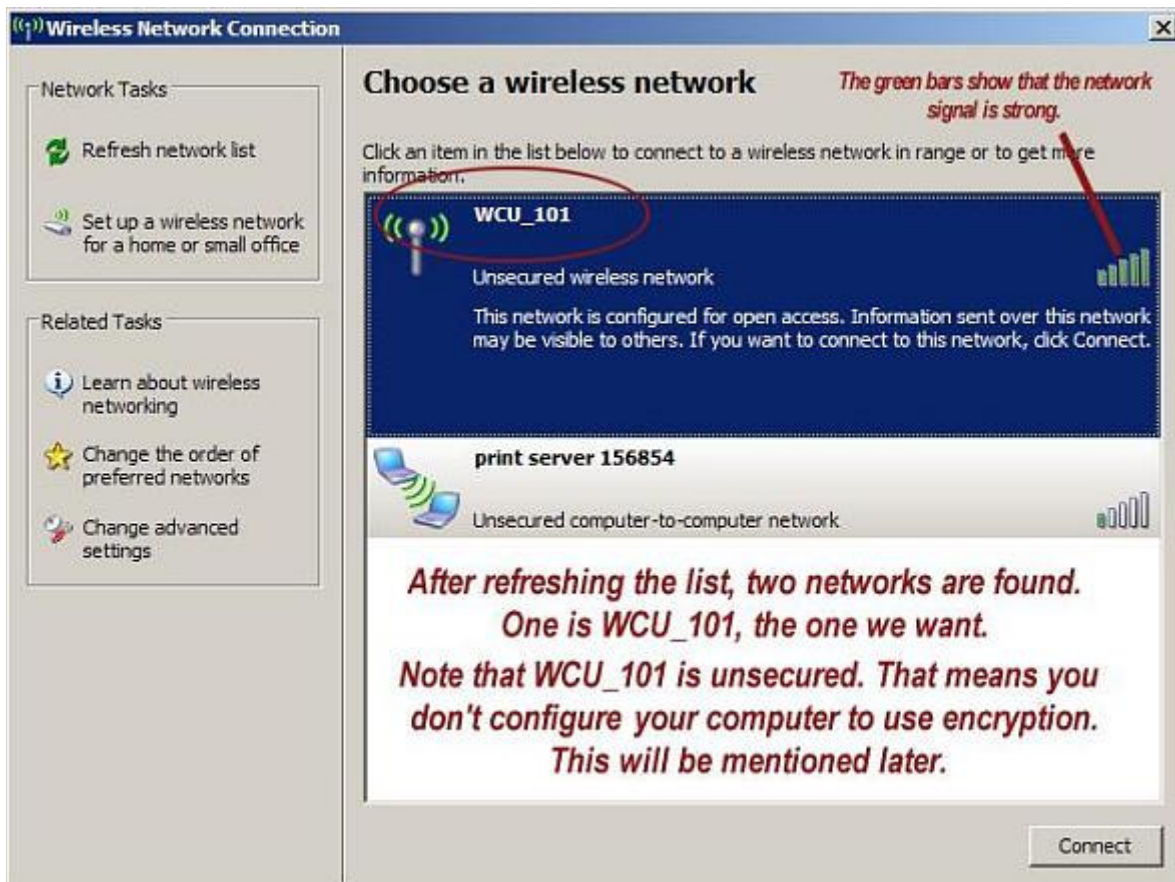
Select View Available Wireless Networks

If you see the WCU_101 network, skip this step...

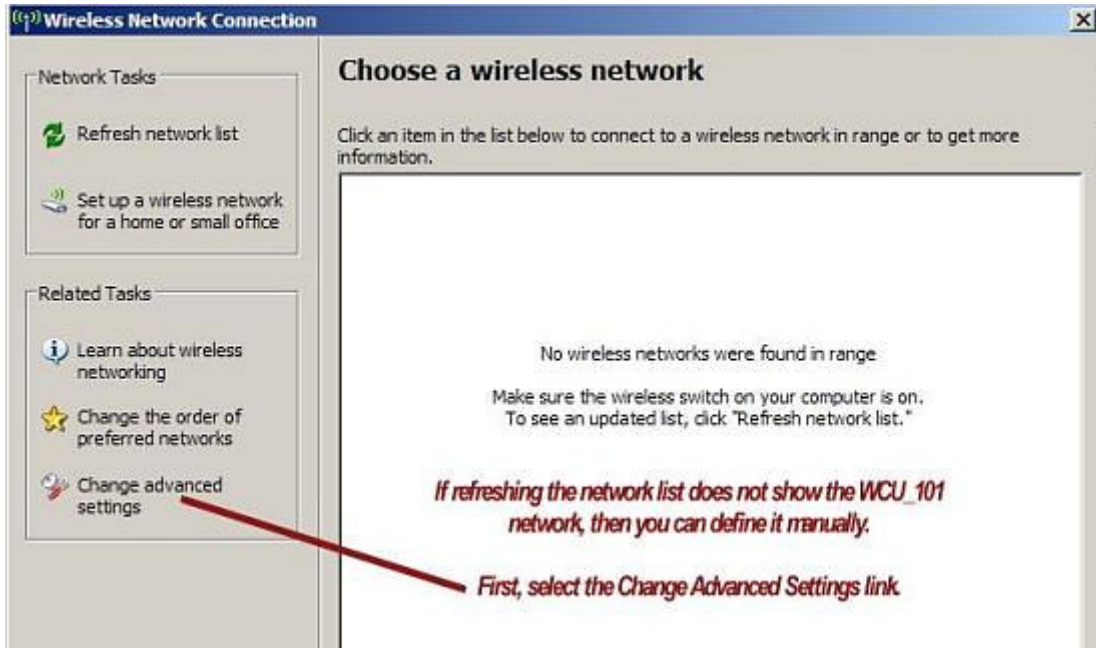
You may get a screen that reports there are no networks detected or there may be networks listed but none of them are WCU_101. The screen below shows there are no networks in range.



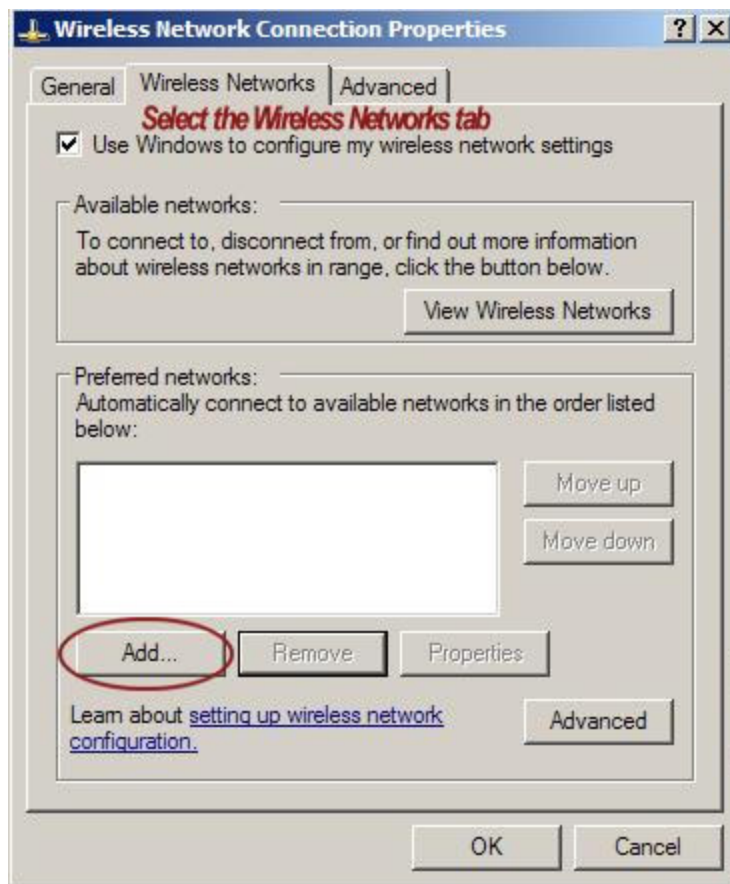
Click on the Refresh network list link. You may need to try it a few times before you find WCU_101.



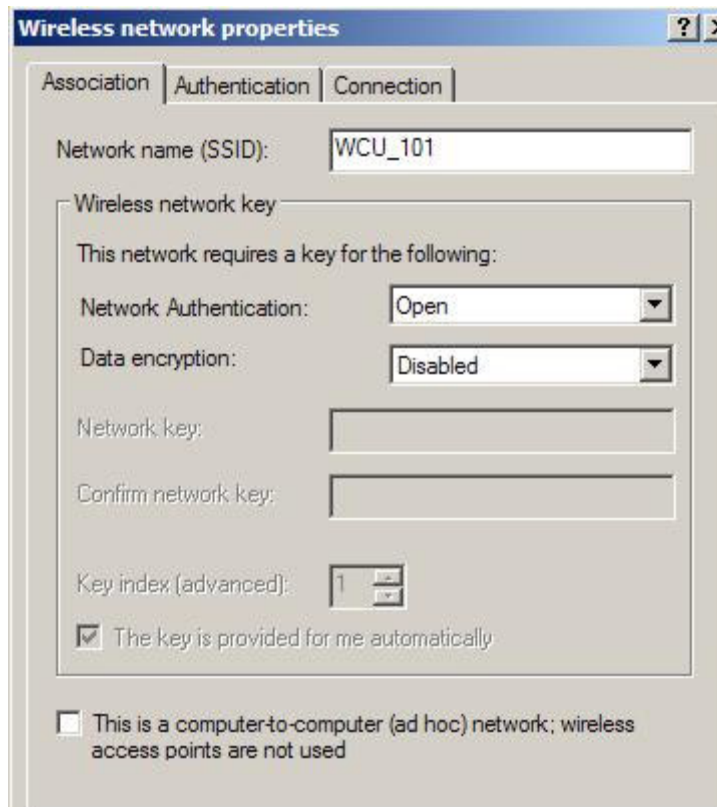
If after refreshing the list, you still can't find the network, you can define it manually.



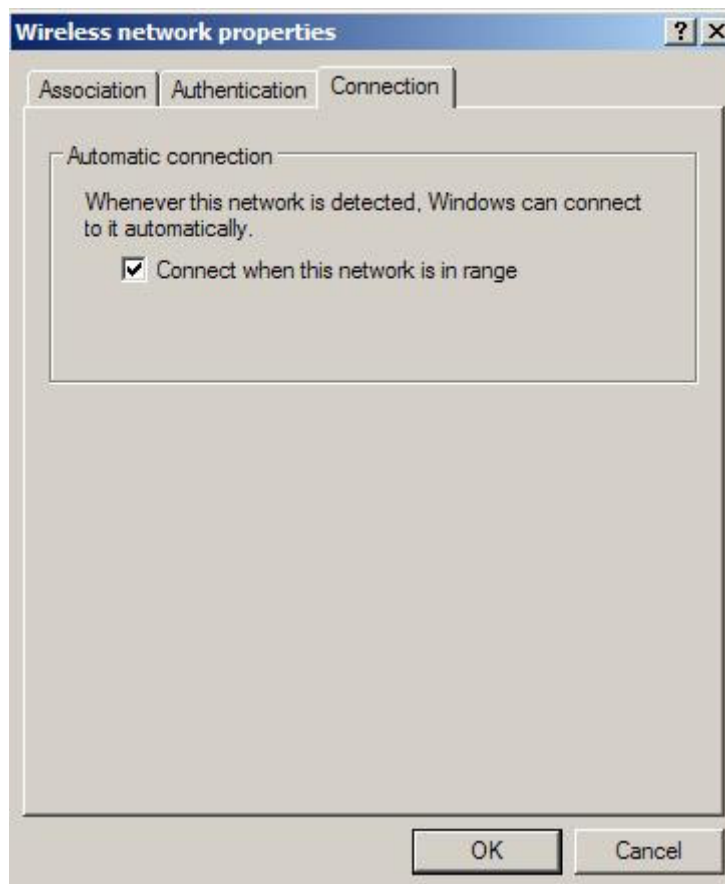
Click on Change advanced settings



Select the Wireless Networks tab and then the Add button.

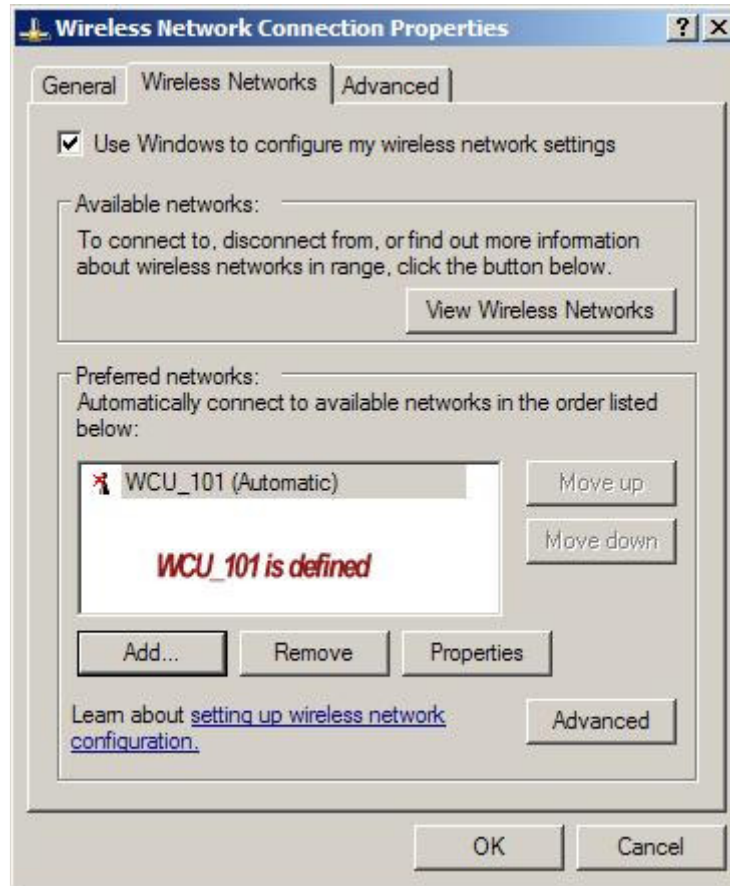


Fill the fields with the values shown. Since WCU_101 is unsecured, you disable data encryption.



Click on the Connection tab and make sure the Connect when this network is in range box is checked as shown.

Click on OK



Now you see that WCU_101 is defined. Click on OK to complete the definition. You should get a message saying that networks have been detected. Click on the message or follow the steps from before to go to the View Wireless Networks screen.

Now select the WCU_101 network by clicking on it. Then click on Connect.

You will see a message indicating that your adapter is connecting to the network. When the connection is made, a message will appear reporting the connection has been made and will report the quality of the signal. If it can not connect, restart Windows and try connecting again.

When you make the connection, open a browser and type in a URL. You will be directed to the Wireless Zone Login screen. Login with your WCU login information and you will be directed to the URL you typed in.